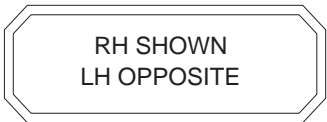


MOUNTING INFORMATION

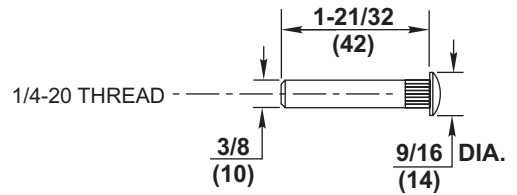
Sex nuts or through bolts are required for wood and plastic covered composite doors, and any type of door without reinforcements and recommended for wood core and metal clad (Kalamein) type doors.



CAUTION: Closer To Be Installed In A True Horizontal Position To Ensure Proper Closer Performance.

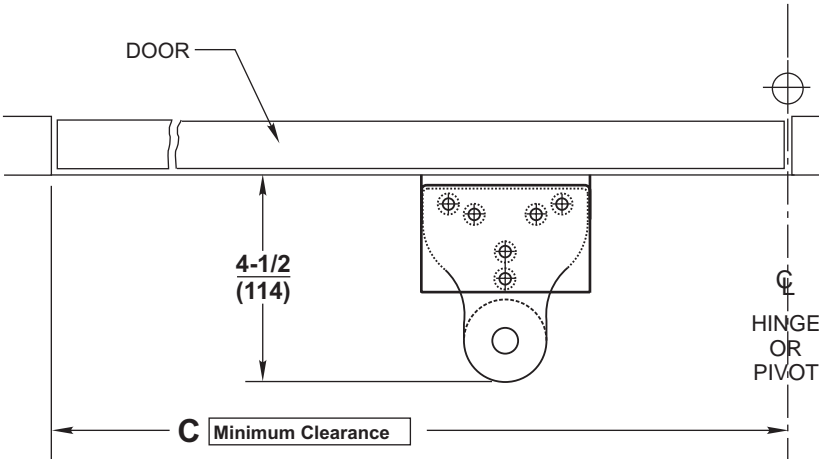
MOUNTING SCREW SPECIFICATIONS
ARM AND QUIK-INSTALL™ BRACKET

#12-14 self-drilling screw.
1/8 (3) diameter pilot hole required for Wood Applications. } or { Sex nuts, furnished when ordered

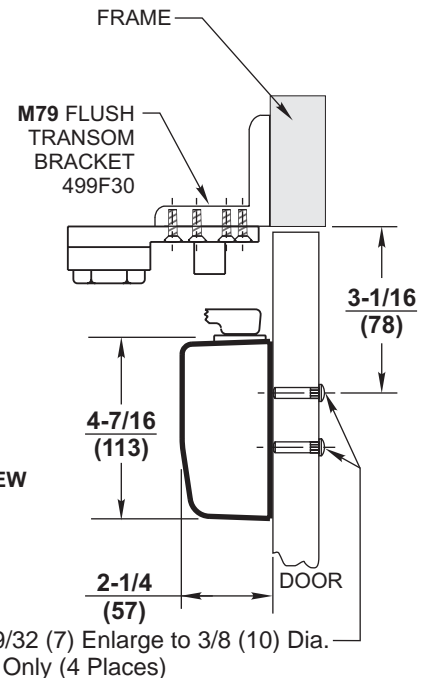
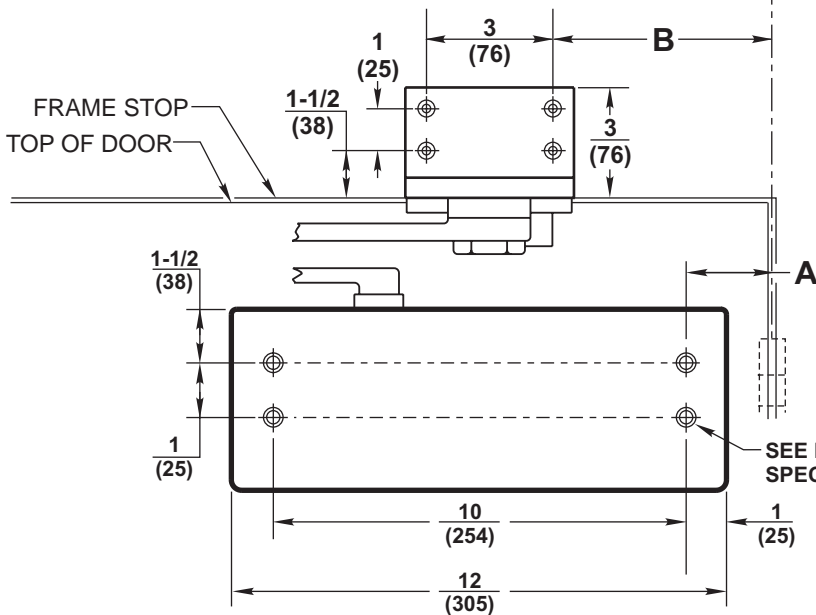


NOTES:

1. Dimensions "A" & "B" apply to centerline of hinge/pivot for butt hinges or offset pivots.
2. Dimensions given in inches and (mm).
3. Minimum Top Rail: 4-5/8 (117)
4. For A2 Arms: Auxiliary door stop required, by others.
5. A2 and A5 arms cannot be used on fire doors.



OPENING MAXIMUM	A QUIK-INSTALL™ Bracket	B Flush Transom Bracket	C MINIMUM Clearance
85°	8-5/8 (220)	12-1/4 (311)	27-5/8 (702)
90°	7-5/8 (194)	11-1/4 (286)	26-5/8 (676)
100°	6-1/8 (156)	9-3/4 (248)	25-1/8 (638)
110°	4-3/4 (121)	8-3/8 (213)	23-3/4 (603)



RESPONSIBILITY

Door and Frame Manufacturers are responsible for providing adequate construction or reinforcements for proper installation of hardware shown. All architectural builders hardware must be installed on properly reinforced doors and frames, regardless of the type, material, or method of construction.

DC8210 Series x A2/A4/A5 x M79

Surface Door Closer, Parallel Arm Mount
By Hold Open and / or Backstop Arm
with M79 Flush Transom Bracket



ASSA ABLOY

www.corbinrusswin.com

Do Not Scale Drawing

Supersedes	Dr.	App.
Date 04-08	Template Number	T31054