

# Data Transfer Device (DTD)

## Specifications/Requirements:

### Mechanical:

3 7/8" W x 5 3/4" L x 1 1/2" D

### Environmental:

Environment: Store Indoors.

Do not get wet.

Temperature Tolerance: 32° F to 120° F (0° – 49°C)

### Electrical:

Operating Voltage: 6V (Four AA Batteries)

### PC Connection:

USB Port (v1.1 or v2.0) Only

### Software Compatibility:

SoloPlus™ v1.0 (or higher)

DTD Printer Utility (available with SoloPlus™ v1.0 or higher)

### Firmware Version:

This manual applies to firmware version 00.44

## Software Compatibility

The DTD supports two modes of operation. When using the DTD as a transfer device in DTD Mode, SoloPlus™ version 1.0 (or higher) is required. When using the DTD to retrieve Infrared Printer logs you must use the DTD Printer Utility, which is available on the software installation CD with SoloPlus™ version 1.0 (or higher).

The included software installation CD supports the DTD and contains the required USB drivers.

## Packing List

- (1) Data Transfer Device
- (1) Installation Instructions
- (1) USB Cable
- (4) AA Batteries (already installed – see Battery Installation Section before use)
- (1) Software Installation CD

### FCC Statement 15.21 Information to User

Any changes or modifications not expressly approved by the party responsible for compliance could void the user's authority to operate the equipment.

## Important Notes

- If you update the DTD firmware (refer to Section 5) some portions of this manual may no longer apply. Please contact the manufacturer for the latest version of this manual.
- You can access an electronic copy of this manual from the DTD Printer Utility, by pressing the F1 key when the program is open.

## Table of Contents

Section 1: Basic Operation.....	3
1.1 DTD Diagram.....	3
1.2 DTD Battery Installation.....	3
1.3 DTD Power.....	4
1.4 Display Backlighting.....	4
1.5 LED Indicators.....	4
1.6 Data Transfer Device vs. PDA Operation.....	4
1.7 Aiming the DTD.....	5
Section 2: DTD Setup.....	6
2.1 Connecting the Data Transfer Device to a PC USB port.....	6
2.2 Installing the USB Drivers.....	7
2.3 Determining the USB COM port number.....	10
Section 3: DTD Mode.....	12
3.1 IMPORT/EXPORT Menu.....	13
3.1.1 Exporting using the AUTO SEARCH Menu.....	13
3.1.2 Exporting using the MANUAL SEARCH Menu.....	14
3.2 UTILITIES Menu.....	16
3.2.1 GET DOOR INFO.....	16
3.2.2 SHOW DTD CLOCK.....	16
3.2.3 SET DOOR CLOCK.....	17
3.2.4 OPTIONS.....	17
3.3 STATUS Menu.....	18
3.3.1 DOOR LIST OPTIONS.....	18
3.3.2 ABOUT.....	18
3.3.3 SET MODE.....	19
3.4 Security Risk Warning (W01).....	19
Section 4: Printer Mode.....	20
4.1 SET PRINTER MODE.....	20
4.2 Printer Mode Main Menu.....	20
4.2.1 INFRARED CAPTURE.....	21
4.2.2 SEARCH DOORS.....	22
4.2.3 Status Menu.....	23
4.3 DTD Printer Utility.....	23
4.3.1 Installing the DTD Printer Utility.....	23
4.3.2 Assigning the DTD COM Port.....	23
4.3.3 Retrieving Infrared Logs from the DTD.....	23
4.3.4 Viewing and Printing Infrared Log Files.....	24
4.3.5 Erasing Infrared Logs from the DTD.....	24
Section 5: Updating the DTD Firmware.....	25
Section 6: DTD Menu Map.....	25
Section 7: Copyright Information.....	26

## Section 1: Basic Operation

### 1.1 DTD Diagram

Figure 1 below is a diagram of the DTD. The diagram illustrates the location of the Power On/Off buttons, the backlighting button and the LEDs. These are explained in detail in later sections. The Infrared (IR) Port is located at the top of the unit above the display where it says "Data Port." Refer to figure 2 on page 5 for a detailed view. When transferring data to the door controller aim the Infrared (IR) Port on the DTD at the Infrared (IR) Port on the door controller.

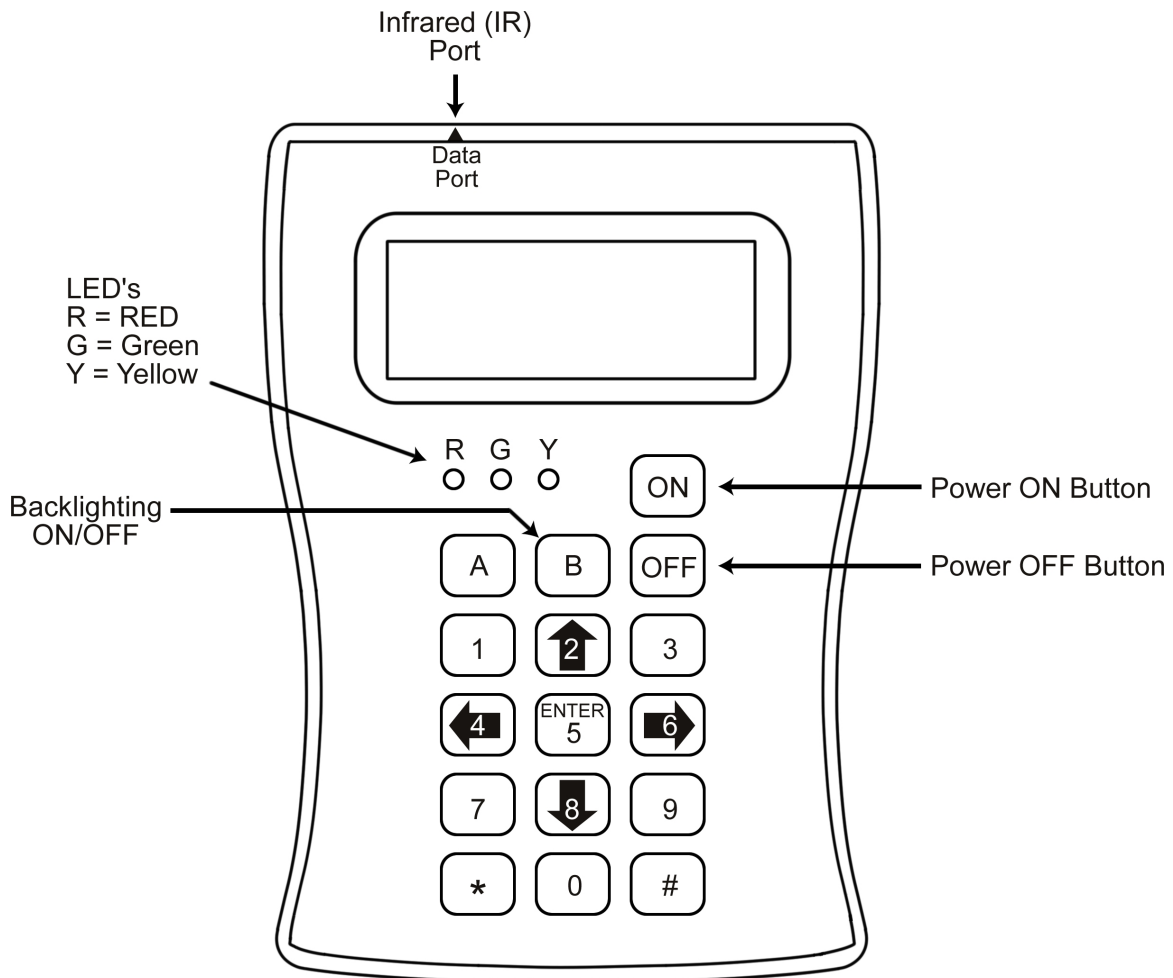


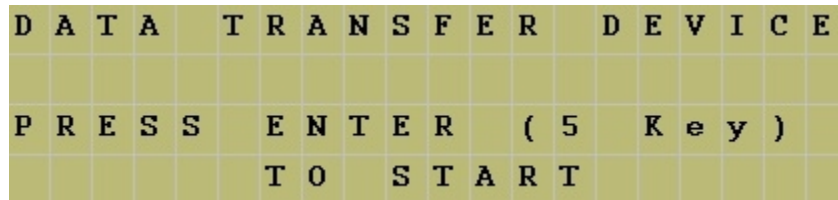
Figure 1: DTD Diagram

### 1.2 DTD Battery Installation

Prior to using the DTD, you must remove the battery cover, which is located on the rear of the unit, and remove the red paper tab. This tab is in place so the batteries are not connected during shipping. First, remove the screw in the bottom center and remove the cover. Then remove the red tab from the battery. Replace the cover and secure it with the screw.

### 1.3 DTD Power

To turn on power to the DTD press and hold the ON button. for two seconds until the DTD powers up. **Note:** See the section 1.2 regarding the batteries. When the DTD is first powered-up the Start-up Screen is displayed, as shown below.



To turn off the DTD press the OFF button shown in the diagram. The DTD has an automatic power-off feature. After 10 minutes of inactivity the DTD turns itself off automatically to save battery life.

### 1.4 Display Backlighting

The DTD is equipped with display backlighting. Press the B key to turn on backlighting. The backlighting remains on for 15 seconds after the last key press to save battery life. It turns on again after pressing a key. To turn off backlighting completely press the B key again.

### 1.5 LED Indicators

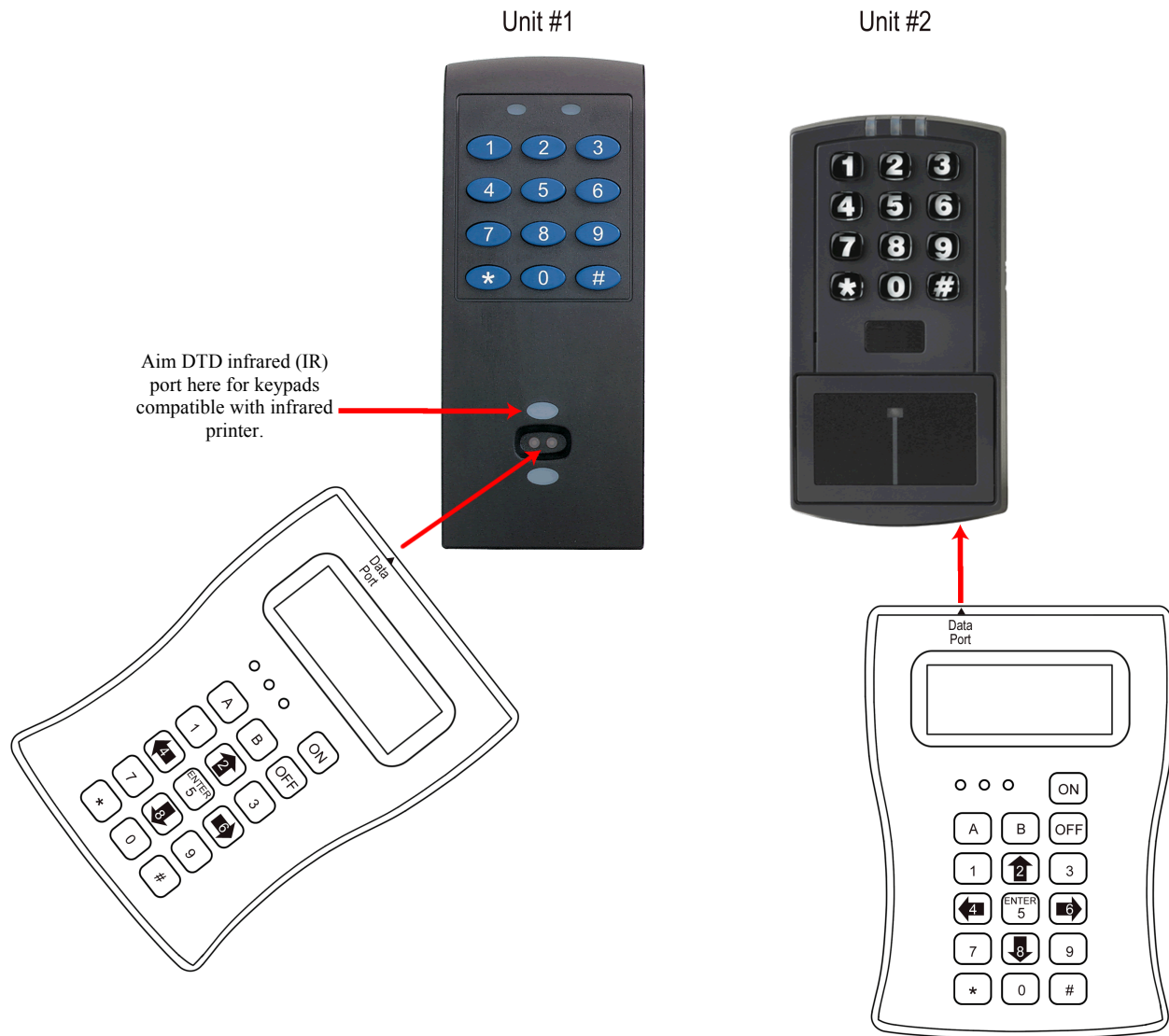
The DTD uses the green and red LED's to indicate when the device is communicating (refer to figure 1). When the DTD is successfully communicating to the door controller, the green LED lights. If at any point you lose communications, the red LED lights. This typically means you've moved the DTD out of door controller's Infrared field. You have 10 seconds to re-establish communications by re-aligning the DTD's Infrared (IR) Data Port, before the DTD times out.

### 1.6 Data Transfer Device vs. PDA Operation

The main difference between the Data Transfer Device and a PDA is the way data is transferred from the PC to the DTD. Unlike the PDA, which requires Palm Desktop software, HotSync Manager and PDA Software, the DTD does not require any additional software and interfaces directly with SoloPlus™. In SoloPlus™, the data is exported directly to the DTD. Please refer to the SoloPlus™ documentation for further details.

## 1.7 Aiming the DTD

The diagram below is included to illustrate the location of the infrared port on both the DTD and the door controllers. Please note the diagram is not meant to demonstrate the actual position you should hold the DTD when communicating to a door controller. When using the DTD with devices similar to Unit # 1 hold the DTD horizontally, so it's perpendicular with the controller. The diagram below shows where to aim the DTD when using a software controlled door controller (DTD Mode). For these controllers aim the DTD at the center indentation. If your controller is compatible with the Infrared Printer (Printer Mode), aim the DTD at oval above the center indentation as noted below. When using the DTD with devices similar to Unit # 2 hold the DTD vertically below the unit as shown. You would typically rest the DTD against the wall at a slight angle below the unit.



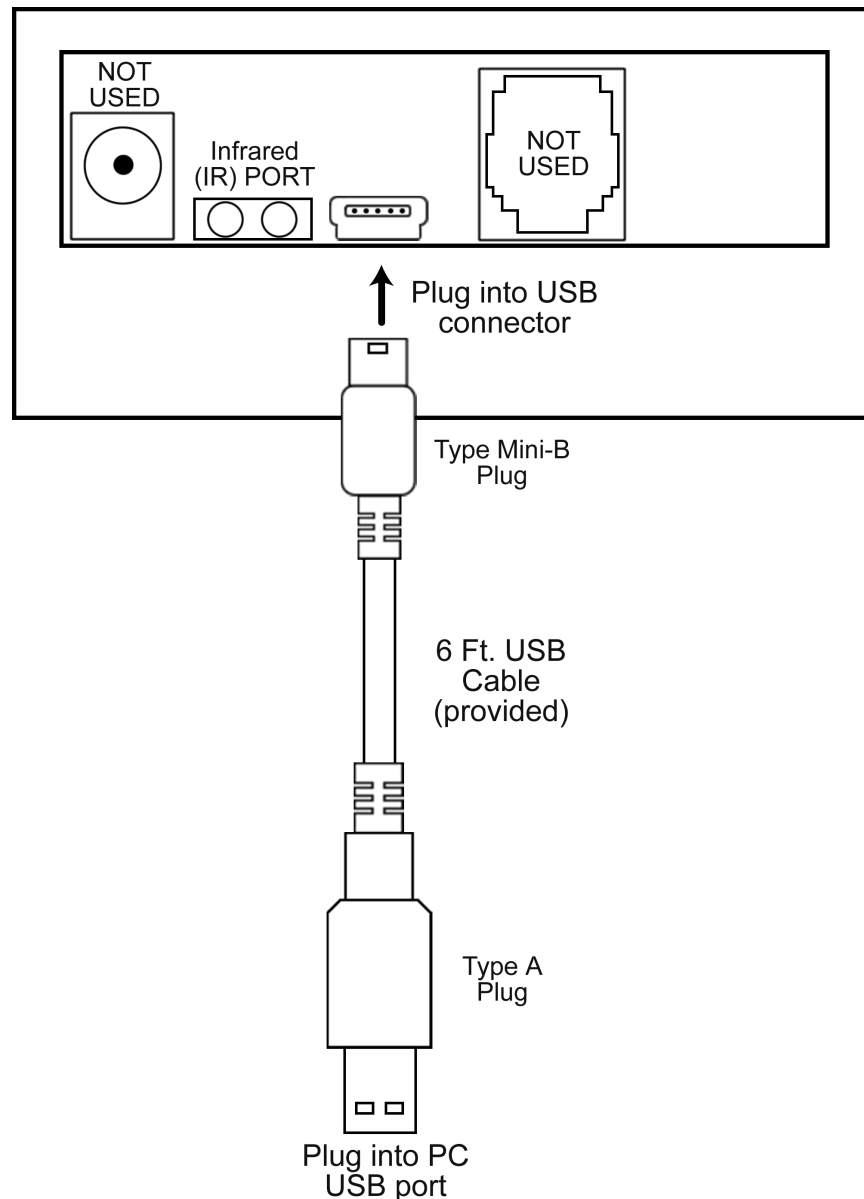
**Note:** When using the DTD in Printer Mode you need to hold the DTD from about 0 to 1 inches to capture data (with LK and KP products). If red LED turns on while retrieving logs, start over.

In DTD Mode you can hold the DTD up to about 6 inches away.

## Section 2: DTD Setup

### 2.1 Connecting the Data Transfer Device to a PC USB port

To connect the DTD to your PC USB port, use the USB cable provided with your DTD. First plug the small end (Type Mini-B) of the 6-foot USB cable into USB connector on the top of the DTD. Then plug the large end (Type A) of the 6-foot USB cable into your PC's USB port. Figure 2 below illustrates this connection.



**Figure 2: Connecting the DTD to PC USB Port**

**Important Note:**

Do not connect more than one DTD to your PC at a time.

## 2.2 Installing the USB Drivers

To use the DTD you must install the USB drivers on the PC. The DTD is plug and play, so when you plug it in, your PC should recognize the new hardware and launch the Found New Hardware Wizard as shown below. **Please note that this hardware wizard runs twice.** Follow the same steps both times. **Note:** These instructions are for a typical Windows XP system. If you are using a different version of Windows, or these steps do not match your PC, please refer to the instructions for your system.

On the first screen of the wizard select “No, not this time.” then click the Next button.

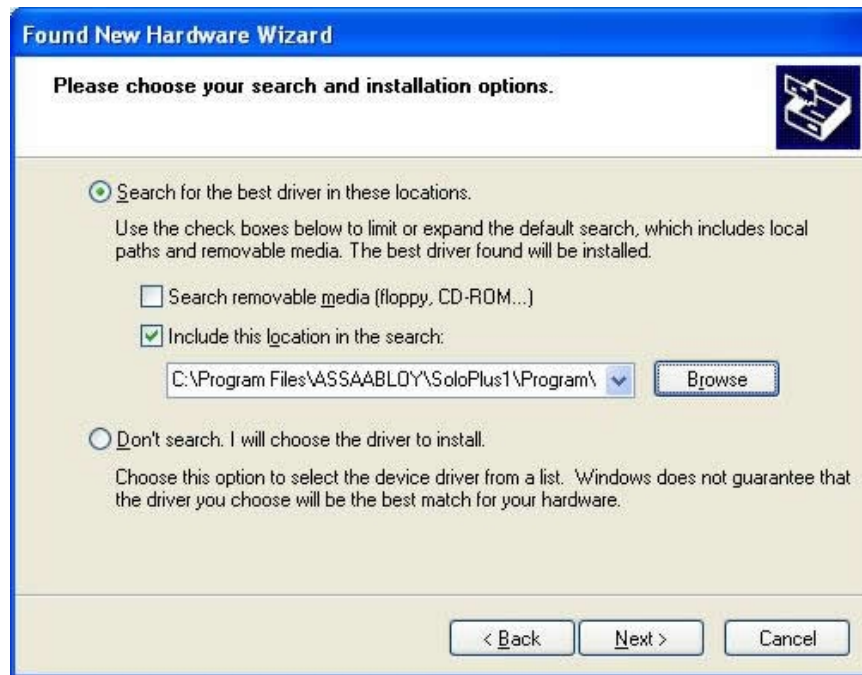


After clicking the Next button, choose the option that says “Install from a list or specific location (Advanced)” and click the Next button.

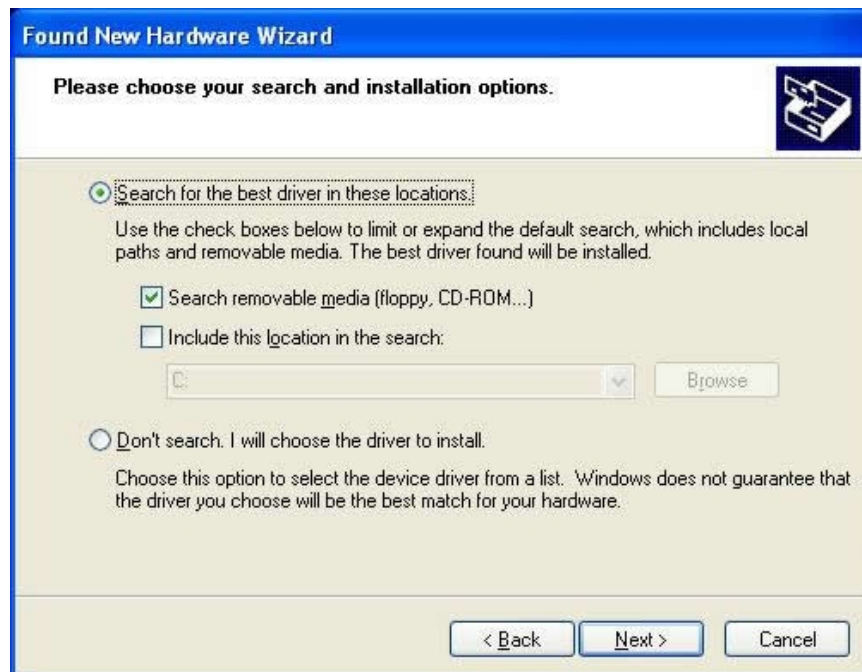


On the next screen select “Search for the best driver in these locations.” at the top. If you've already installed SoloPlus™ onto the PC, then select “Include this location in the search” and browse to the following path:

C:\Program Files\ASSAABLOY\SoloPlus1\Program\Utilities\USB\_Driver\FTDI\_XP-2K-20030



If you haven't installed SoloPlus™, the USB drivers are also located on the CD. Choose the option “Search removable media (floppy, CD-ROM...)” For reference, the USB drivers are located in the following folder on the CD: E:\Driver\_USB\FTDI\_XP-2K-2003. (Note: This folder path is an example; Your CD drive letter may not be E.) Click Next to continue.





Next a screen appears indicating the files are being copied, then you're presented with the following screen to indicate the process is finished. Click on the Finish button to close the Found New Hardware Wizard. **Please note that this hardware wizard runs twice. Follow the same steps both times.**



**Note:** The second time through the Found New Hardware Wizard, the final screen indicates the wizard has completed installing the software for: USB Serial Port.

## 2.3 Determining the USB COM port number

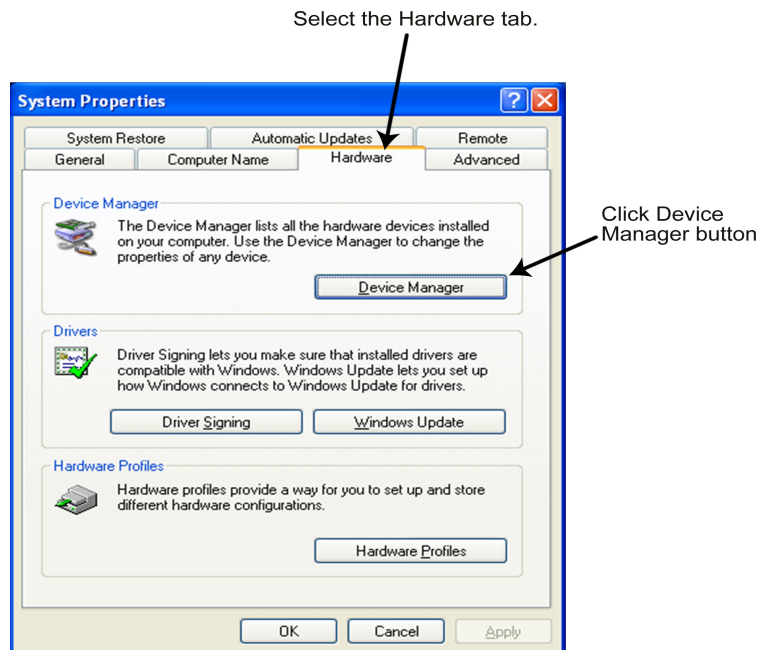
When you connect the Data Transfer Device to your computer's USB port, the PC automatically assigns it a COM port number. You must then select this COM port in the software to communicate to your DTD. You can either use the automatic search feature in SoloPlus™ or follow the instructions below to determine the COM port number. **Note:** These instructions are for a typical Windows XP system. If you are using a different version of Windows, or these steps do not match your PC, please refer to the instructions for your system.

1. Right click on the My Computer icon on your desktop and select properties from the drop down list.



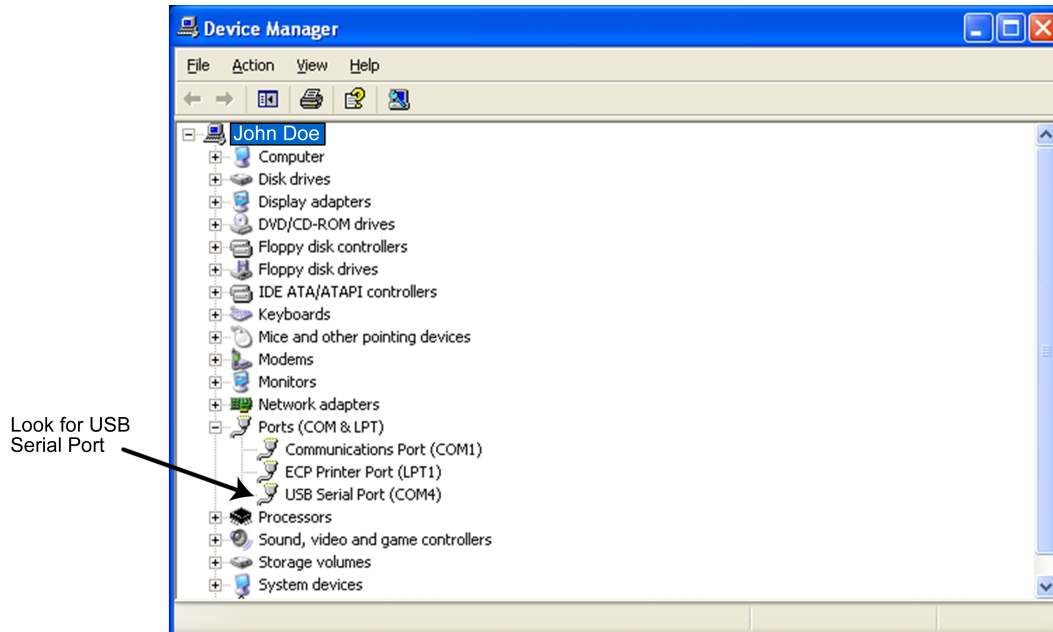
**Note: If you do not have the My Computer icon on your desktop, you can access the System Properties by going to Control Panel.** Click on the Windows Start Menu and choose Settings, then Control Panel. When the Control Panel menu opens, scroll down to System. Double-click on System to open. Follow the rest of the instructions in this section.

2. When the System Properties screen opens select the Hardware tab, then click on the Device Manager button.



- When the device manager list opens, expand Ports (COM & LPT) by clicking the + symbol. Under this is a list of the COM ports on your PC. Look for USB Serial Port (COMx) in the list. The COM port is shown to the right. The example below shows the DTD is assigned to COM4.

**Note:** If you are unsure of which device it is, unplug the USB cable and the screen will refresh. Take note of which devices are in the list. Then plug the cable back in and notice which device re-appears in the list.



**Important Note:**

If you unplug the DTD from the USB port and plug it into a different physical port on the PC or on a USB Hub, the COM port number will remain the same.

## Section 3: DTD Mode

From the factory, the DTD is set in DTD Mode. This mode is used to send data and retrieve transaction event logs from controllers that support two way communications.

**Note:** If you need to change the mode to Printer Mode, please refer to section 3.3 and 3.3.3.

When the DTD is first powered-up the the Start-up Screen is displayed (refer section 1.3). **To access the DTD menu system press the ENTER key, which is the number 5 key in the center (refer to figure 1 on page 3).**

Next you are presented with the DTD Mode Main Menu: IMPORT/EXPORT, UTILITIES and STATUS. The IMPORT/EXPORT menu is used to export data to the controller or import transaction logs. The UTILITIES menu contains options to retrieve information from the door controller, time and date options and communications options. The STATUS menu contains door information, DTD information, as well as an option to change the operating mode. These menu options are described in more detail in later sections.

=	D	T	D	M	o	d	e	=				
I	M	P	O	R	T	/	E	X	P	O	R	T
U	T	I	L	I	T	I	E	S				
S	T	A	T	U	S							

To navigate through the menu system, press the down arrow, which is the number 8 key in the lower center or the up arrow, which is the number 2 key in the upper center. The blinking cursor on the left of the DTD display moves up and down next to the various options. To select an option press the ENTER key. To move back to a previous menu press the left arrow, which is the number 4 key on the left center.

**Note:** If at any time you want to return to the Start-up Screen press the \* key in the lower left corner. Also pressing the left arrow brings you back to the previous menu.

### 3.1 IMPORT/EXPORT Menu

The IMPORT/EXPORT menu is used to export data to the door controller and import transactions from it. There are two options: AUTO SEARCH and MANUAL SEARCH. These options are described below.

A	U	T	O	S	E	A	R	C	H						
M	A	N	U	A	L	S	E	A	R	C	H				
I	M	P	O	R	T	&	E	X	P	O	R	T	S	E	T

**Note:** The bottom line of this screen indicates which import/export option is set. Refer to section 3.2.4.

#### 3.1.1 Exporting using the AUTO SEARCH Menu

The AUTO SEARCH option is used to communicate to a door automatically. When communications begin the DTD reads the serial number out of the door controller and compares that to the serial numbers in the door files stored on the DTD. When it finds the matching door file, the import/export begins. **Note:** If a matching file is not found, the DTD prompts you with a warning message. When you press ENTER, you are sent to manual search mode (see section 3.1.2), where you select the door from a list.

First, enter your Comm Unlock code on your door controller, then press the ENTER button on the DTD to select AUTO SEARCH. If communications are not established, you are prompted with the message below, which indicates you either entered the wrong code or the DTD is not aligned properly. Press ENTER to continue.

E	N	T	E	R	C	O	M	M					
U	N	L	O	C	K	C	O	D	E				
A	T	D	O	O	R								
T	H	E	N	P	R	E	S	S	E	N	T	E	R

If a matching door file is found, the following screen appears indicating the name of the matching door it found. Press ENTER to continue the import/export process.

F	O	U	N	D	D	O	O	R	
D	o	o	r	N	a	m	e		
P	R	E	S	S	E	N	T	E	R
T	O	P	R	O	C	E	S	S	

When the transfer begins the following screen appears and the green LED turns on. If at any point you lose communications with the door controller, the red LED turns on. You have 10 seconds to move the DTD back into range.

```

      <
T R A N S F E R   I N   P R O G R E S S
  
```

When the data transfer is complete the following message appears. Press the left arrow to exit to the menu.

```

      E x p o r t / I m p o r t
      C o m p l e t e d
< :   E X I T   T O   M E N U
  
```

If a matching door file is not found, the following message appears. When you press ENTER you are brought to the manual search screen, which allows to choose a door from the list. Please refer to the following section discussing the MANUAL SEARCH menu.

```

W A R N I N G ,   D E V I C E
N O T   R E C O G N I Z E D
P R E S S   E N T E R
T O   C O N T I N U E
  
```

### 3.1.2 Exporting using the MANUAL SEARCH Menu

The MANUAL SEARCH option is used when you are communicating to a door controller for the first time or if a door is not found. When you select this option, the search screen is displayed. To navigate through the list of doors use the up and down arrows.

```

M a n u a l   D o o r   S e a r c h
U p / D o w n :   T o   S e a r c h
E n t e r :   S e l e c t   D o o r
  
```

The doors are displayed as shown below. The site name is on the first line and the door name is on the second line.

```

  S i t e   N a m e
  D o o r   N a m e
  U p / D o w n :   T o   S e a r c h
  E n t e r :   S e l e c t   D o o r

```

When you reach the door you are looking for, stop. Now enter your Comm Unlock code on your door controller and aim your DTD at the Infrared (IR) port on the door controller and press the ENTER key. If communications are not established you are prompted with the following message (either you entered the wrong code or are not aligned properly). Try again, then press ENTER to continue.

```

  E N T E R   C O M M
  U N L O C K   C O D E
  A T   D O O R
  T H E N   P R E S S   E N T E R

```

If the serial number in the export file you are trying to send does not match the serial number in the controller, you are prompted with a warning message. This message means one of two things: either the serial number in the door file you chose does not match the serial number of the door controller or this is the first time you've attempted to communicate with the door.

```

  W A R N I N G ,   S E R I A L
  N U M B E R   D O E S   N O T
  M A T C H   D O O R .   P R E S S
  E N T E R   T O   C O N T I N U E

```

If you wish to proceed, press the ENTER key to continue. When the transfer begins, the following screen appears and the green LED turns on. If at any point you lose communications with the door controller, the red LED turns on. You have 10 seconds to move the DTD back into range.

```

  <
  T R A N S F E R   I N   P R O G R E S S

```

When data transfer is complete, the message below appears. Press the up or down arrows to move through the door list.

```

  E x p o r t / I m p o r t
  C o m p l e t e d
  ^   P r e v i o u s   D o o r
  v   N e x t   D o o r

```

## 3.2 UTILITIES Menu

To access the UTILITIES Menu press the ENTER button from the Start-up Screen. Next you are presented with three choices. Press the down arrow to move the cursor to the UTILITIES option and press the ENTER key. You have four choices in this menu, as shown below.

```

  G E T   D O O R   I N F O
  S H O W   D T D   C L O C K
  S E T   D O O R   C L O C K
  O P T I O N S

```

### 3.2.1 GET DOOR INFO

The GET DOOR INFO menu item is used to retrieve information from the door controller. First, enter your Comm Unlock code on the door controller. Next aim your DTD at the Infrared (IR) port on the controller and press the ENTER key. If successful, the door information is immediately displayed on the DTD screen. This information includes the door controller serial number, firmware part number and version, time and date.

```

  S / N   0 0 0 0 0 0 2 0 0 5 8
  F W    0 2 2 9 0 4 0 3   v 0 2 . 1 a
  1 1 : 3 8
  0 7 / 1 6 / 0 7

```

### 3.2.2 SHOW DTD CLOCK

The DTD maintains the current time and date that it receives from the PC. To view the current DTD time and date, select this menu option. You can only update this time and date using the PC software.

```

  C U R R E N T   D T D   T I M E
  1 1 : 3 8
  0 7 / 1 6 / 0 7

```



### 3.2.3 SET DOOR CLOCK

SoloPlus™ has an option to automatically set the time and date in the controller when you export. You also have the option to manually set the time and date in the door controller using this menu option. First, enter your Comm Unlock code on the door controller. Next aim your DTD at the Infrared (IR) port on the controller and press the ENTER key. If successful, the message below is displayed on the DTD screen.

D	O	O	R	T	I	M	E	S	E	T				
1	1	:	3	8										
0	7	/	1	6	/	0	7							

### 3.2.4 OPTIONS

The OPTIONS menu allows you to set the DTD to the following three options: EXPORT ONLY, IMPORT ONLY or IMPORT & EXPORT. If you only wish to export data to the controller, choose EXPORT ONLY by pressing the ENTER key with the cursor next to that option. When set, the DTD displays a confirmation message. Press the left arrow to exit the message and return to the menu. The “=” symbol indicates which options is currently set. Select the IMPORT ONLY option when you only want to import transaction log data from the door controller without exporting any data to it. The IMPORT & EXPORT options performs both operations.

A	U	T	O	O	P	T	I	O	N	S				
E	X	P	O	R	T	_	O	N	L	Y				
I	M	P	O	R	T	_	O	N	L	Y				
=	I	M	P	O	R	T	&	E	X	P	O	R	T	

### 3.3 STATUS Menu

The STATUS menu has three options. The first displays information about the doors stored on the DTD, the second has information regarding the DTD unit and third option allows you to select the DTD operating mode.

```

D O O R   L I S T   O P T I O N S
A B O U T
S E T   M O D E

```

#### 3.3.1 DOOR LIST OPTIONS

The DOOR LIST OPTIONS menu is used to view the status of the doors currently on the DTD. The first option, SHOW ALL DOORS, displays a complete list of export files on the DTD. This list shows which doors are still pending (ie. Doors you haven't exported to yet) and which are complete. The second option, SHOW PENDING ONLY, only displays the doors that are still pending. The third option, SHOW IMPORT FILES, contains a list of all import files currently on the DTD.

```

S H O W   A L L   D O O R S
S H O W   P E N D I N G   O N L Y
S H O W   I M P O R T   F I L E S

```

To select a menu option move the cursor to the option you want to view and press the ENTER key on the DTD. You are now presented with the following screen. Pressing the up or down arrow on the DTD moves you through the list of doors. When you reach the door you want to view, press the ENTER key.

```

M a n u a l   D o o r   S e a r c h
U p / D o w n :   T o   S e a r c h

```

#### 3.3.2 ABOUT

The ABOUT screen displays the DTD firmware and hardware versions, as well as, the memory capacity. The “8” indicates there are eight memory chips installed, which supports 250 doors.

#### 3.3.3 SET MODE

This options allows you to change the operating mode of the DTD. From the factory the unit is configured for DTD Mode, which is indicated by the = symbol. To change to Printer Mode use the down arrow (8 key) to move the cursor next to SET PRINTER MODE, then press ENTER (5 key). Refer to section 4, which discusses Printer Mode.

### 3.4 Security Risk Warning (W01)

When the DTD attempts to communicate to the door controller during the import/export process, it first asks the controller if program mode was entered. If program mode was entered manually on the controller, the following warning is displayed. This warning means that someone may have programmed data into the controller that doesn't match the PC software database. When this message is displayed you can either ignore it for the time being and continue with your import/export or you can press the back arrow (4 key) to cancel the operation. To correct the situation return to the PC and choose the full export options. Please refer to the PC software documentation for complete details about performing this action.

S	e	c	u	r	i	t	y		R	i	s	k		(	W	0	1	)
P	r	o	g	.		M	o	d	e		D	e	t	e	c	t	e	d
C	o	n	t	i	n	u	e	:		E	n	t	e	r				
E	x	i	t	:		P	r	e	s		B	a	c	k				

## Section 4: Printer Mode

### 4.1 SET PRINTER MODE

To configure your DTD to operate in Printer Mode (from DTD Mode), go to the STATUS MENU as described in section 3.3, then select the SET MODE option as discussed in section 3.3.3. When the screen below appears, move the cursor down to the SET PRINTER MODE option and press ENTER. The = symbol will move down to the new setting, as shown. To return to the Start-Up Screen press the \* key.

	S	E	T	D	T	D	M	O	D	E				
=	S	E	T	P	R	I	N	T	E	R	M	O	D	E

### 4.2 Printer Mode Main Menu

When the DTD is first powered-up the the Start-up Screen is displayed (refer to section 1.3). **To access the Printer Mode menu system press the ENTER key, which is the number 5 key in the center (refer to figure 1 on page 3).**

Next you are presented with three main sub-menu selections: INFRARED CAPTURE, SEARCH DOORS and STATUS. The INFRARED CAPTURE option is used to capture data sent from the controller. The SEARCH DOORS menu option allows you to search through previously captured door data and view the information on the display. The STATUS menu contains information about the DTD, as well as an option to change the operating mode. These menu options are described in more detail in later sections.

	=	P	R	I	N	T	E	R	M	O	D	E	=		
	I	N	F	R	A	R	E	D	C	A	P	T	U	R	E
	S	E	A	R	C	H	D	O	O	R	S				
	S	T	A	T	U	S									

To navigate through the menu system, press the down arrow, which is the number 8 key in the lower center or the up arrow, which is the number 2 key in the upper center. The blinking cursor on the left of the DTD display moves up and down next to the various options. To select an option press the ENTER key. To move back to a previous menu press the left arrow, which is the number 4 key on the left center.

**Note:** If at any time you want to return to the Start-up Screen press the \* key in the lower left corner. Also pressing the left arrow brings you back to the previous menu.

### 4.2.1 INFRARED CAPTURE

**Note:** It's important to note, prior to using the INFRARED CAPTURE function in Printer Mode, how this feature differs from the Import/Export function in DTD Mode. In Printer Mode, the DTD can only receive data, because the door controllers only support one-way communication. This is important because if the DTD misses any data (because it was not aligned properly or you move it out of the data stream), the controller won't resend the data. This means there will be gaps in your data. If this occurs, dump the data a second time from the controller and be sure to keep the DTD aligned properly.

To start capturing data, first hit the ENTER key on the INFRARED CAPTURE menu item on the main menu shown in section 4.2. Next you are prompted with the message shown below.

```

P R E S S   E N T E R
T H E N   S T A R T
I N F R A R E D   D U M P
O N   D O O R

```

To dump the transaction log or users to the DTD follow these steps:

1. Enter Program Mode on the controller keypad : 99 # master code \* (keypad yellow LED flashing slow).
2. Enter the command to dump either the transaction log or user list:
  - Enter the Log Dump command on the controller keypad: 70 # 0 # 0 # \* (keypad yellow LED flashing fast).
  - Enter the User Dump command on the controller keypad: 25 # 0 # 0 # \* (keypad yellow LED flashing fast).
3. Press ENTER on the DTD (the WAITING FOR DATA screen appears on DTD; shown below).
4. Press the \* key on the controller keypad (keypad LED flashing green and yellow)
5. When finished, the green LED stops flashing and only the yellow is flashing.
6. Press the \* key on the controller keypad to exit program mode.

```

W A I T I N G   F O R   D A T A

```

Once the unit starts receiving data, the green LED on the DTD turns on indicating data is being captured. If the red LED turns on, this indicates the DTD is not receiving any data. You should adjust the DTD until you see the green LED turn on. Keep in mind, however, that if the controller sent out any data prior to establishing communications, you may miss some data. Please refer to the note at the top of this page.

When the DTD starts receiving, the data will scroll across the display as each line is received, similar to a paper tape. The data is stored in memory for later viewing on the DTD or to import from a PC.

### 4.2.2 SEARCH DOORS

The SEARCH DOORS options lets you search through the files you have captured and allows you to view the data. When you hit ENTER on SEARCH DOORS the following screen appears. Use the up and down arrows on the DTD to browse through the files.

```

^ : P r e v i o u s   D o o r
v : N e x t   D o o r

```

Each session is stored as a separate file and uses a time/date stamp to name the file. When you reach the file you're looking for press the ENTER key to view it. Refer to section 4.3.4 for complete details about the file naming convention.

```

P r i n t e r _ F i l e
2 0 0 8 0 1 2 2 1 1 3 9 8 r
U p / D o w n :   T o   S e a r c h
E n t e r :     S e l e c t   D o o r

```

Below is an example of a transaction event log.

```

1   0 8 : 3 0   U s e r   0 0 0 1
P r i n t
2   0 8 : 2 9   P r o g r a m
M o d e

```

Below is an example of a user list.

```

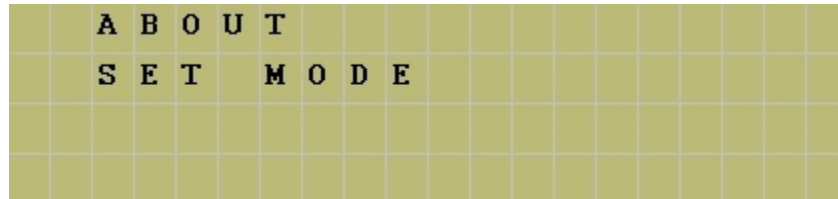
0 0 0 2   S F           4 6 9 7
- - - -
0 0 0 3   S F           1 6 8 4
- - - -

```

**Note: In order to remove printer files from the DTD you must use the DTD Printer Utility.**

### 4.2.3 Status Menu

The status menu in Printer Mode contains the ABOUT option and SET MODE options. The ABOUT option contains information about the DTD, such as firmware part number and memory size. The SET MODE option allows you to change the DTD operating mode, as discussed in section 4.1.



## 4.3 DTD Printer Utility

To import the captured infrared log files from the DTD to your PC you must install the DTD Printer Utility, which is located on the SoloPlus™ software installation CD. **You are not required to install SoloPlus™ to use this software.** This is a standalone software utility used to import the transaction event logs and user data captured in printer mode. This program is not integrated with SoloPlus™ and logs files can't be viewed or imported into SoloPlus™.

### 4.3.1 Installing the DTD Printer Utility

To install the DTD Printer Utility, first insert the software installation CD. When the Autorun Setup screen opens, select the hardware manufacturer that matches your door hardware. Next, you are presented with three choices. Choose the option that says “Install DTD Printer Utility.” Follow the on-screen instructions in the Setup Wizard to install the program.

### 4.3.2 Assigning the DTD COM Port

**Note:** When you first plug the DTD into your PC's USB port, you must install the USB drivers. Refer to section 2.2 in this manual for details about installing the USB drivers.

To determine the COM port Windows has assigned to your DTD, refer to section 2.3 in this manual. Once you've found the COM port number, select that number in the drop down list in the DTD Printer Utility.

### 4.3.3 Retrieving Infrared Logs from the DTD

**Note:** Before attempting to retrieve log files, make sure your DTD is plugged into your USB port and is powered on.

To retrieve the infrared log files from your DTD click on “Get All Printer Logs from DTD” in the DTD Printer Utility. When complete, you are prompted with a message indicating the files were received. The list of log files is shown in the left column, under Available Log Files.

### 4.3.4 Viewing and Printing Infrared Log Files

The files are available for viewing directly in the DTD Printer Utility. Select the file you want to view in the left hand column and the data is displayed in the right hand column.

The files are also stored as text files on the PC in the following folder: C:\Program Files\DTD Printer Utility\LogFiles. To access these files, open a text editing program, such as Windows Notepad or WordPad and browse to the folder path indicated above and open the file. You can also browse to the file through Windows Explorer.

#### Printer File Naming Convention

Printer files are named with a time/date stamp in the following format: year/month/day/hour/minute/sequence number/r. The sequence number is an easy way to differentiate two different files if they are created within the same minute. This number increments by 1 with each file. The “r” indicates that the file is a printer file.

The example shown in section 4.2.2 is 2008012211398r and this would be stored as 2008012211398r.txt on the PC. Below is a break down of the file name.

2008 = Year

01 = Month

22 = Day

11 = Hour

39 = Minute

8 = Sequence Number

r = Printer File Designation

### 4.3.5 Erasing Infrared Logs from the DTD

**Note:** Before attempting to erase log files, make sure your DTD is plugged into your USB port and is powered on.

To erase the infrared log files from your DTD click on “Erase All Printer Logs from DTD” in the DTD Printer Utility. When complete, you are prompted with a message indicating the files were erased. This action only erases the files from the DTD; It does not erase them from the PC.



## Section 5: Updating the DTD Firmware

The DTD contains a feature that allows you to update the DTD firmware in the field. As new features and enhancements are available, the new firmware is downloaded to your PC when you run iUpdate through SoloPlus™. Please refer to the SoloPlus™ documentation for complete details on updating the firmware.

## Section 6: DTD Menu Map

Below is complete menu map of the DTD in DTD Mode and Printer Mode to use as a guide to help you navigate through the DTD menu system. Please refer to the previous sections, which discuss the operation of each menu option.

### DTD MODE

- IMPORT/EXPORT
  - AUTO SEARCH
  - MANUAL SEARCH
- UTILITIES
  - GET DOOR INFO
  - SHOW DTD CLOCK
  - SET DOOR CLOCK
  - OPTIONS
    - EXPORT\_ONLY
    - IMPORT\_ONLY
    - IMPORT & EXPORT
- STATUS
  - DOOR LIST OPTIONS
    - SHOW ALL DOORS
    - SHOW PENDING ONLY
    - SHOW IMPORT FILES
  - ABOUT
  - SET MODE
    - SET DTD MODE
    - SET PRINTER MODE

### PRINTER MODE

- INFRARED CAPTURE
- SEARCH DOORS
- STATUS
  - ABOUT
  - SET MODE
    - SET DTD MODE
    - SET PRINTER MODE

## **Section 7: Copyright Information**

Copyright © 2009 ASSA ABLOY Inc. All Rights Reserved. SoloPlus™ is a trademark of ASSA ABLOY Inc. Other company or product's brand names may be trademarks or registered trademarks of their respective owners and are mentioned for reference purposes only.