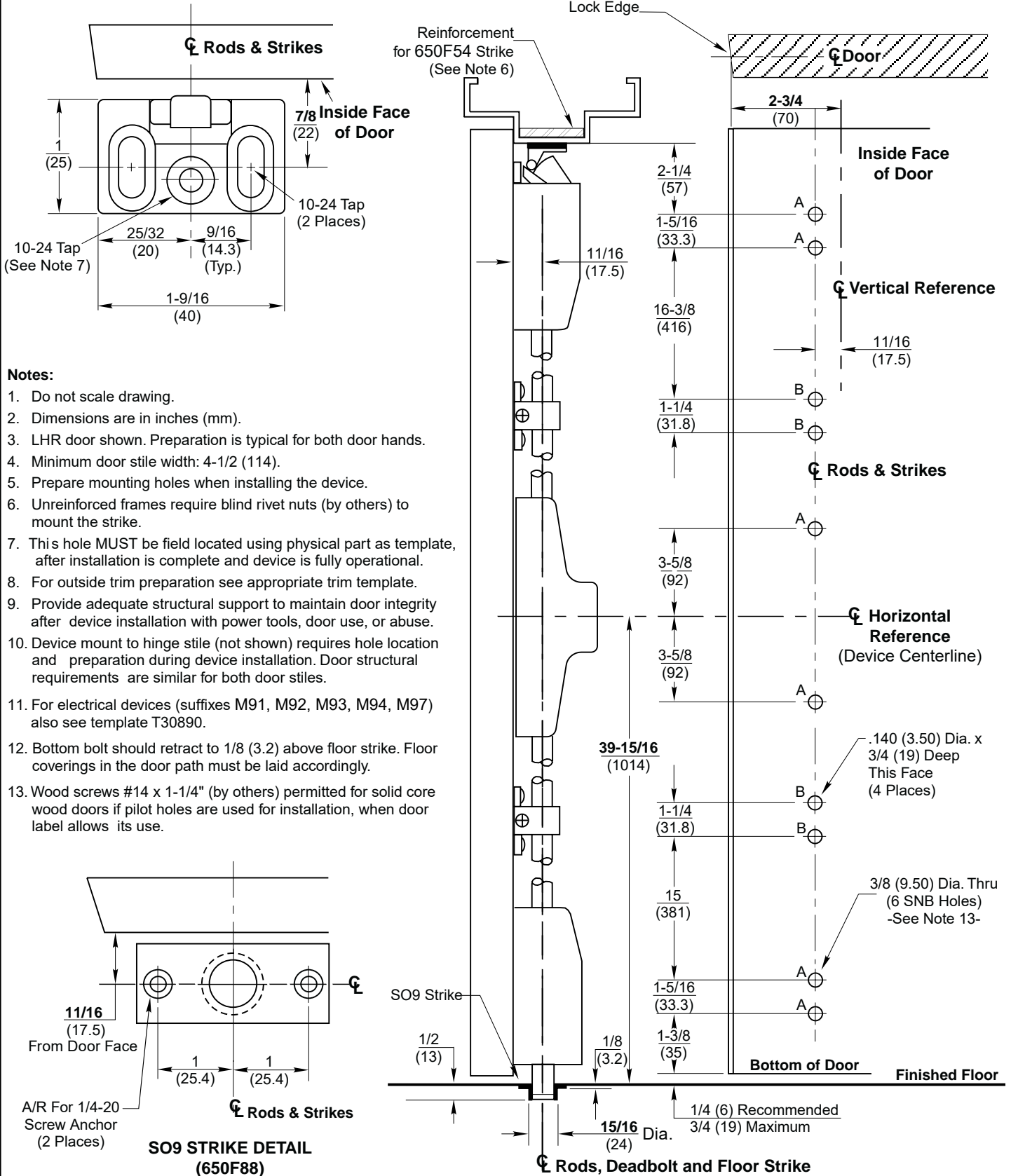


**650F54 STRIKE DETAIL**



**ED2400 & ED2400A, ED5400 & ED5400A Series Surface Vertical Rod Exit Devices with Optional SO9 Floor Strike & SNB**  
 Application for Wood or Composite Door and H.M. Frame without Threshold



SUPERSEDES T30839-2 DO NOT SCALE DRAWING  
 TEMPLATE NUMBER T30839-3 DATE 10-22

www.corbinrusswin.com