

Quality, Simplicity, and Beauty

ED5000 Series Exit Devices

The Corbin Russwin ED5000 Series exit devices are ideal for environments that require durable and attractive security solutions that will last the life of the building.

Available in rim, mortise, surface vertical and concealed vertical rod configurations, these exit devices exceed ANSI/BHMA Grade 1 requirements for cycle and strength.

These exit devices are aesthetically pleasing and offer a full range of decorative trim designs, including the Museo® and Vineyard™ Collections.



ED5000 Series Exit Device

FEATURES

- Modular construction, maintenance-free design
- Available in rim, mortise, surface vertical rod and concealed vertical rod
- Complete offering of electro-mechanical solutions
- Available with Microshield® antimicrobial coating
- Made from 61% post-consumer recycled content as per LEED MR credit 4
- 5 year warranty
- Available with Museo® decorative levers and 13 architectural finishes

BENEFITS

- **STRENGTH & RELIABILITY:**
Independently-verified cycle and strength testing proves the ED5000 Series exceeds ANSI/BHMA Grade 1 standards for long life.
- **SECURITY:**
Multiple security features provide additional resistance against vandalism and unauthorized entry.
- **EASE OF INSTALL AND MAINTENANCE:**
Modular components and robust design allow for quick and easy installation, and maintenance free operation.
- **AESTHETICS:**
Attractive, minimalist design featuring many levers and architectural finishes to blend with any decor.
- **SUSTAINABLE:**
Less product replacements due to long life and high post-consumer recycled content – contributing to your sustainability efforts.

APPLICATIONS

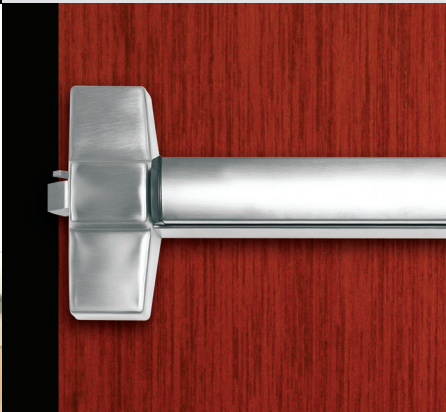
- Schools
- Hospitals
- Office Buildings
- Theaters





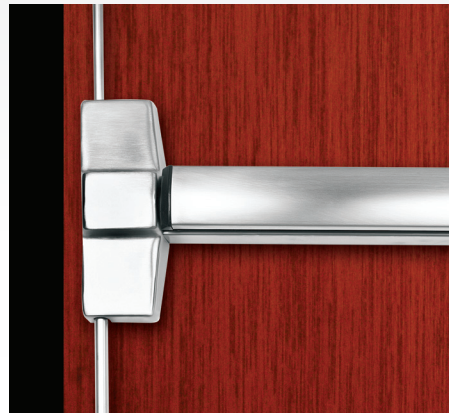
ED5200 Series Rim Exit Device

- Designed for standard width stile applications on wood and metal doors
- Single point rim latching device
- Single and double door applications with mullions
- ANSI/BHMA Grade 1
- UL Fire and Panic listed
- Also available in narrow stile (ED4200 Series)



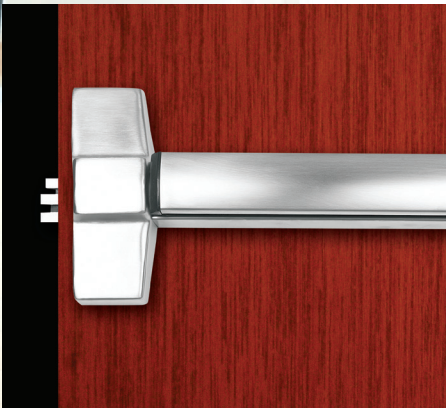
ED5400 Series Surface Vertical Rod Exit Device

- Designed for standard width stile applications on wood and metal doors
- Two point latching (top & bottom with adjustability through center case)
- Single or double door applications
- ANSI/BHMA Grade 1
- UL Fire and Panic Listed
- Also available in narrow stile (ED4400 Series)



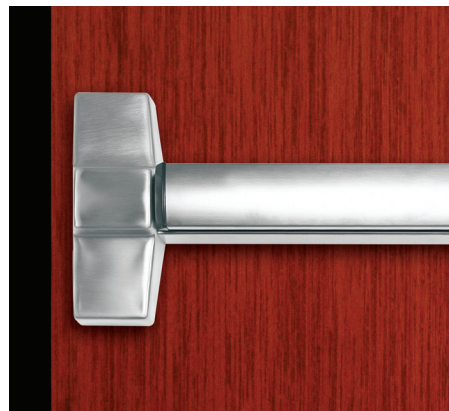
ED5600 Series Mortise Lock Exit Device

- Designed for standard width stile applications on wood and metal doors
- Concealed single point guarded latching for additional security
- Available for single door applications or double door applications
- ANSI/BHMA Grade 1
- UL Fire and Panic listed



ED5800 Series Concealed Vertical Rod Exit Device

- Designed for standard width stile applications on metal or aluminum doors
- Concealed rods for security and aesthetics
- Single and double door applications
- Available less bottom rod
- ANSI/BHMS Grade 1
- UL Fire and Panic listed
- Also available in narrow stile (ED4800 Series)



Popular Options Available



SecureBolt® Security Deadbolt

SecureBolt® provides increased security by resisting unauthorized entrance from the use of credit cards, crowbars, door rattling and shaking, etc.; therefore significantly reducing the threat of unauthorized entry.



PathLite™ Photoluminescent Option

The PathLite illuminated exit device increases the visibility of exit locations in dark or smoke filled passages, supplementing existing codes for egress lighting.



Double Cylinder Function

Corbin Russwin offers a double cylinder function for mortise, rim and SecureBolt® exit devices. This function allows the outside trim to be locked by the inside or outside cylinder. A cylinder on the inside cover provides a quick, easy way to lock the outside trim without opening the door.

Alarmed Exit (M61)

The Alarmed Exit option is designed for areas requiring a stand-alone alarm on outswinging doors. This option sounds immediately upon exit or if tampered with and discourages unauthorized use.

Latchbolt Monitor Switch (M91)

The latch monitor provides true, tamper resistant latchbolt monitoring. The monitor switch is activated when the rail is depressed or for any reason that the latch moves.

Lever Monitoring (M93)

Corbin Russwin offers monitoring for outside levers as well. Available as an option for our electrified devices, the lever monitoring option sends a signal when the outside lever is rotated for entry.

Electric Latch Pullback or Electric Latch Retraction (M94)

Allows electrified retraction of latchbolt for momentary or maintained periods. Device returns to normal operation if fire alarm goes off or if there is an interruption of power to device. Opening remains unsecured while latchbolt is held retracted.

Electric dogging (M97)

Allows continuous electrified dogging of latch. Dogging is released and device returns to normal operation if fire alarm goes off or if there is an interruption of power to device. When dogged, opening remains unsecured.

Hurricane and Windstorm Resistance Certifications

Designed for standard width stile applications on wood and metal doors.

ASSA ABLOY is the global leader in door opening solutions, dedicated to satisfying end-user needs for security, safety and convenience

Corbin Russwin and Design® is a registered trademark of Corbin Russwin, Inc., an ASSA ABLOY Group company. These materials are protected under US copyright laws. Other products' brand names may be trademarks or registered trademarks of their respective owners and are mentioned for reference purposes only. All contents current at time of publication. Corbin Russwin, Inc., an ASSA ABLOY Group company reserves the right to change availability of any item in this sell sheet, its design, construction, and/or its materials. Copyright © 2014 Corbin Russwin, Inc., an ASSA ABLOY Group company. All rights reserved. Reproduction in whole or in part without the express written permission of Corbin Russwin, Inc. is prohibited.

Corbin Russwin Architectural Hardware
225 Episcopal Road, Berlin, CT 06037
Phone 800-543-3658
Fax 800-447-6714
www.corbinrusswin.com

45389: 5/14