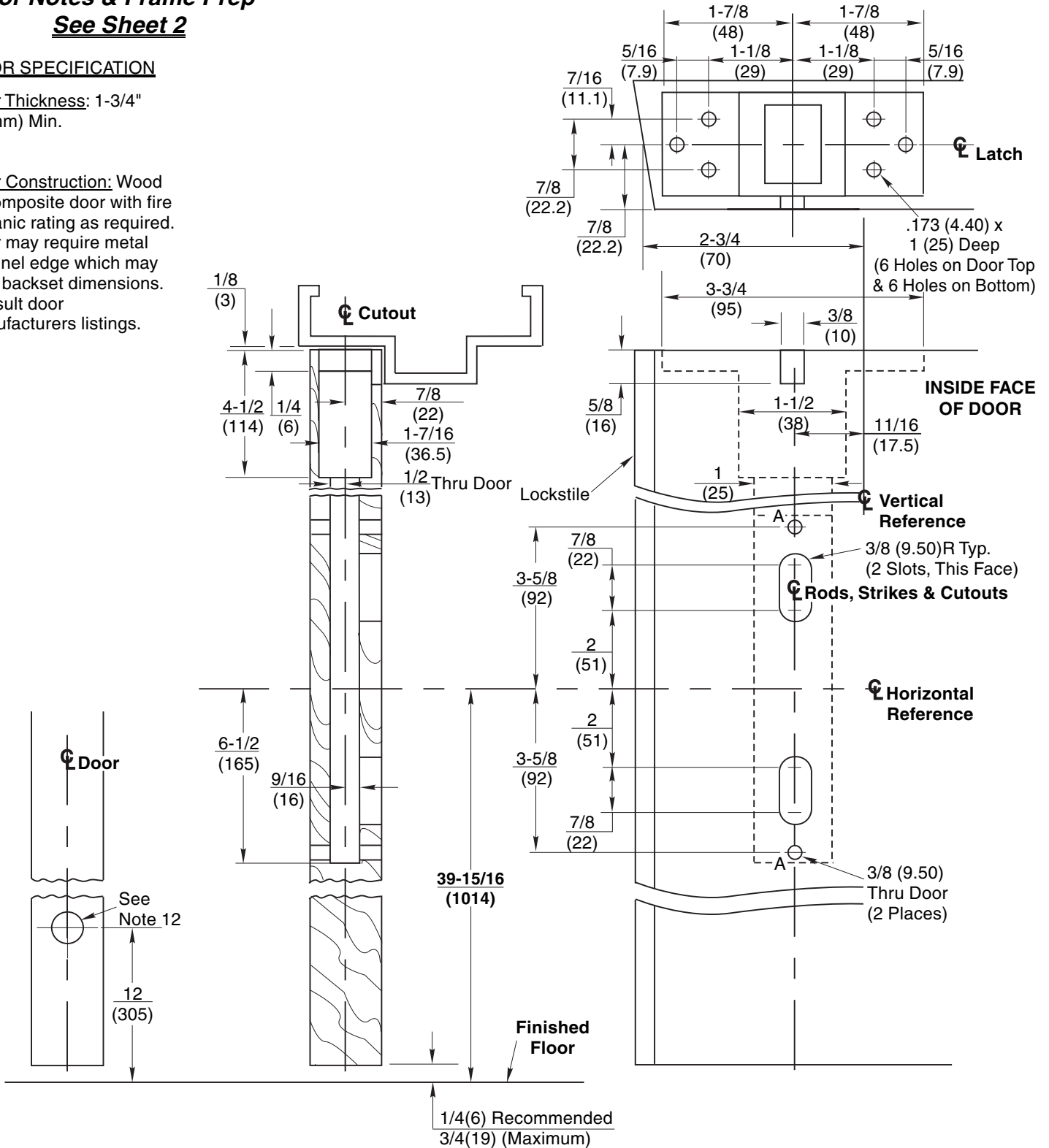


**For Notes & Frame Prep
See Sheet 2**

DOOR SPECIFICATION

Door Thickness: 1-3/4" (45mm) Min.

Door Construction: Wood or composite door with fire or panic rating as required. Door may require metal channel edge which may alter backset dimensions. Consult door manufacturers listings.



**ED5860 M55 & ED5860B M55 Series
Concealed Vertical Rod Exit Devices**

Application for Wood Door & Metal Frame Less Bottom Rod (M55 Option)

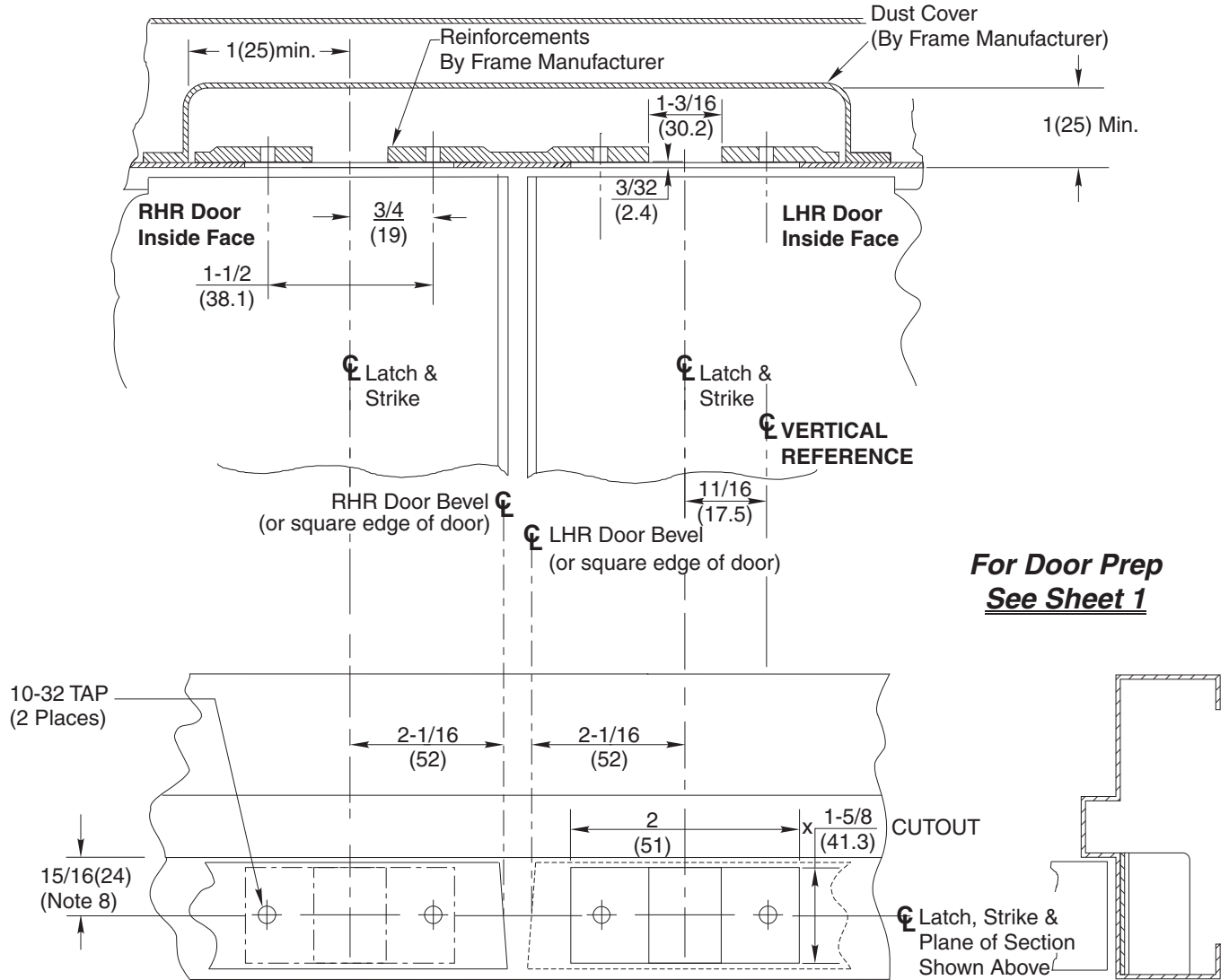


ASSA ABLOY

www.corbinrusswin.com

SUPERSEDES	DO NOT SCALE DRAWING	
TEMPLATE NUMBER	SHEET	DATE
T31084	1 of 2	04-08

681F77 Top Strike Preparation (See Note 6)



Notes:

1. Do not scale drawing.
2. Dimensions are in inches (mm).
3. Preparation is typical for both hands.
4. Minimum door stile width: 4-1/2 (114).
5. Prepare mounting holes when installing the device.
6. Drawing shows elevation (frame bisected on strike center), bottom view looking up and side view.
7. Provide adequate structural support to maintain door integrity after device installation with power tools, door use, or abuse.
8. Door located in frame for door silencers. If not used, compensate this dimension to seat the door against the stop without rattle.
9. Device mount to hinge stile (not shown) requires hole location and preparation during device installation. Door structural requirements are similar for both stiles.
10. For outside trim preparation see appropriate trim template.
11. For electrical devices (suffixes M91, M92, M93, M94, M97) also see template T30890.
12. For Fire Labeled Door Pairs Only:
 Active leaf: 5/8 (16) Dia. x 7/8 (22) Deep Min.
 Inactive leaf: 9/16 (14) Dia. x 2-7/8 (73) Deep Min.
13. Door structure as required for heat activated interlocking bolt. 1-1/2 square 16 ga. plate recommended.

**ED5860 M55 & ED5860B M55 Series
Concealed Vertical Rod Exit Devices**
Application for Wood Door & Metal Frame Less Bottom Rod (M55 Option)



ASSA ABLOY

www.corbinrusswin.com

SUPERSEDES	DO NOT SCALE DRAWING	
TEMPLATE NUMBER	SHEET	DATE
T31084	2 of 2	04-08