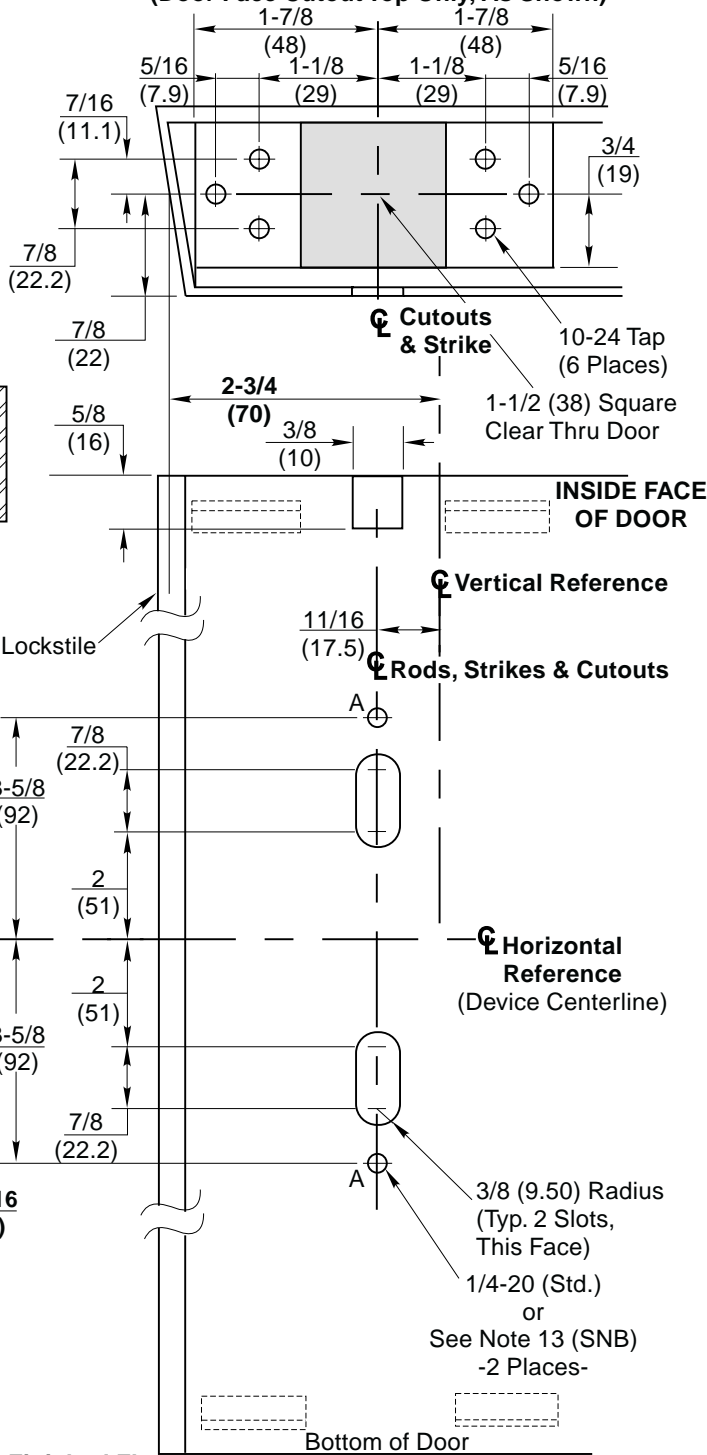
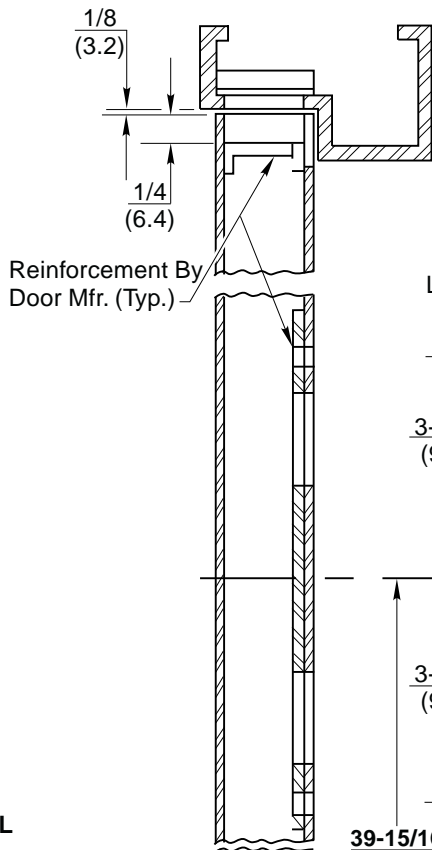


**See Sheet 2 for Notes
& Top Strike Detail**

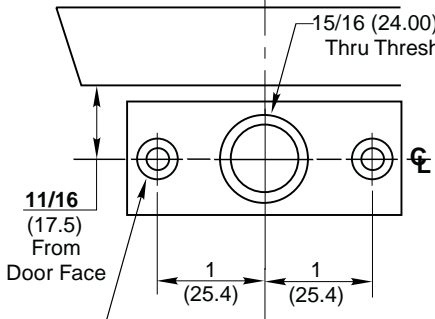
**Typical Top & Bottom Door Detail
(Door Face Cutout Top Only, As Shown)**



Section Thru Cutouts Center



**SO9 STRIKE DETAIL
(650F88)
-See Note 15-**



A/R For 1/4-20 Screw Anchor (2 Places)

⊕ Rods & Strikes

⊕ SO9 Floor Strike & Bolt

**ED5860 & ED5860B Series
Concealed Vertical Rod Exit Devices**

Application for Metal Door and Frame With 1/2" Threshold and SO9 Optional Floor Strike

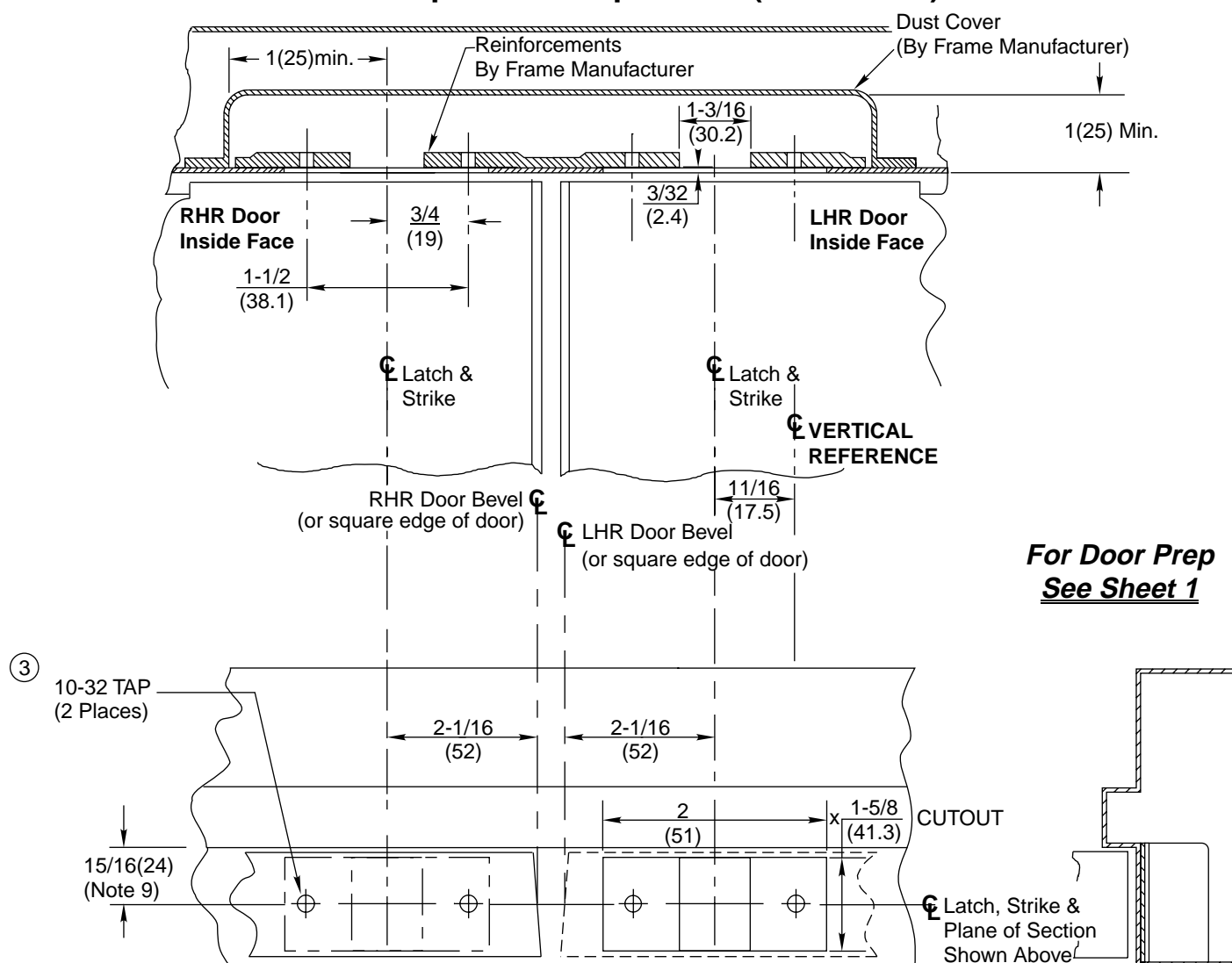


www.corbinrusswin.com

SUPERSEDES T30903-2 DO NOT SCALE DRAWING

TEMPLATE NO. T30903-3 SHEET 1 of 2 DATE 1-02

681F77 Top Strike Preparation (See Note 6)



**For Door Prep
See Sheet 1**

Notes:

- Do not scale drawing.
- Dimensions are in inches (mm).
- Preparation is typical for both hands.
- Minimum door stile width: 4-1/2 (114).
- Prepare mounting holes when installing the device.
- Drawing shows elevation (frame bisected on strike center), bottom view looking up and side view.
- Provide adequate structural support to maintain door integrity after device installation with power tools, door use, or abuse.
- For recommended door reinforcements see template T30800.
- Door located in frame for door silencers. If not used, compensate this dimension to seat the door against the stop without rattle.
- Device mount to hinge stile (not shown) requires hole location and preparation during device installation.
- For outside trim preparation see appropriate trim template.
- For electrical devices (suffixes M91, M92, M93, M94, M97) also see template T30890.
- Holes for optional SNB (Required for unreinforced doors):
9/32 (7.00) dia., inside door face;
3/8 (9.50) dia., outside door face.
- Maximum thickness 5/32 (4.0) when outside escutcheon trim is used.
- Bottom bolt should retract to 1/8 (3.2) above floor strike. Floor coverings in the door path must be laid accordingly.

**ED5860 & ED5860B Series
Concealed Vertical Rod Exit Devices**
Application for Metal Door and Frame With 1/2" Threshold
and SO9 Optional Floor Strike

**Corbin
Russwin**
www.corbinrusswin.com

SUPERSEDES T30903-2 DO NOT SCALE DRAWING
TEMPLATE NO. T30903-3 SHEET 2 of 2 DATE 1-02