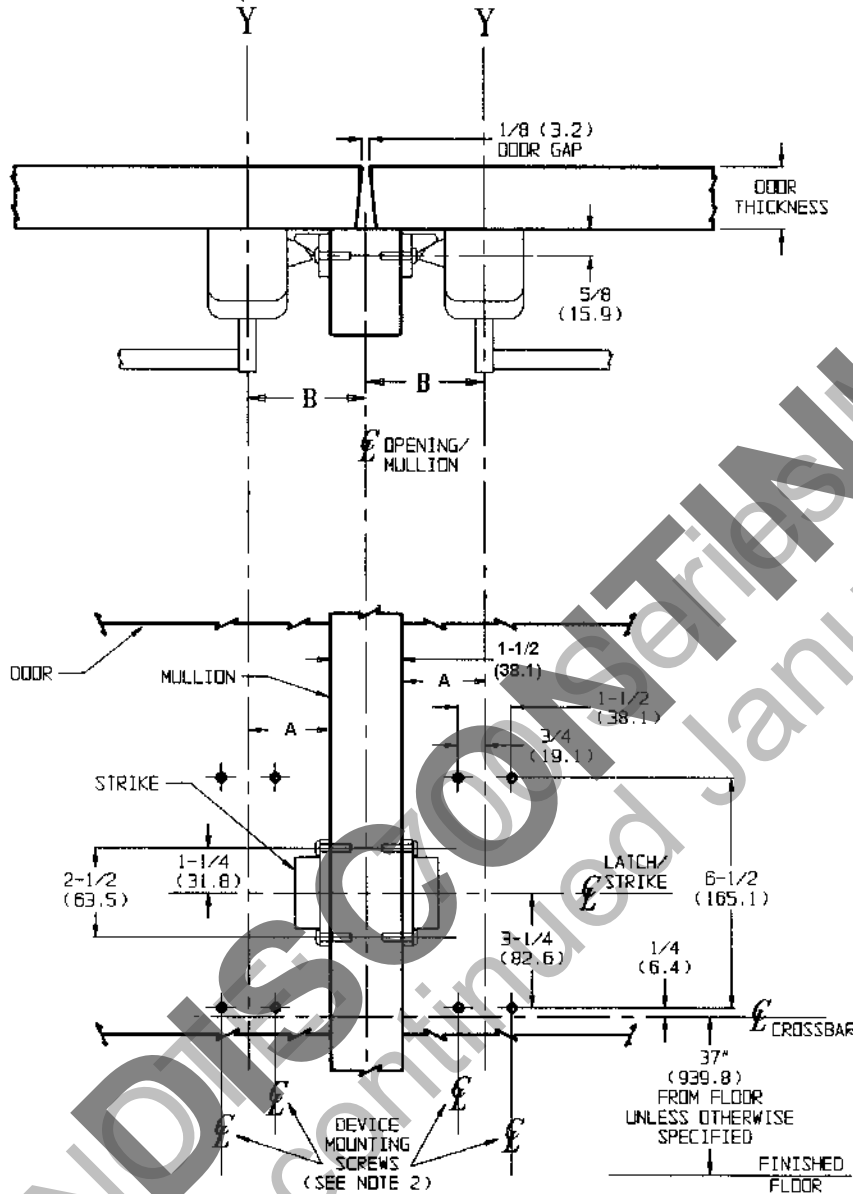


DOUBLE DOOR APPLICATIONS ONLY

TEMPLATE CROSS REFERENCE (FOR SINGLE DOOR APPLICATIONS)

DESCRIPTION	TEMPLATE
ED6200 SERIES RIM DEVICE	T30566

LINES "Y-Y" CORRESPOND TO "Y-Y" ON DEVICE AND TRIM TEMPLATES



Notes:

1. For 707A (KM), 708A (KM) or 710 (KM) mullion frame preparation template, refer to T30882.
2. For other device and strike mounting specifications, refer to appropriate single door application template.
3. For preparation of trim, refer to separate template.
4. Dimensions given in inches (mm).

STRIKE		A	B	MINIMUM STILE
PACKET	FURNISHED			
145F55	REGULAR	2-9/32 (57.9)	3-1/32 (77)	4-1/4 (108)
145F56	OPTIONAL S05	2-3/32 (53.2)	2-27/32 (72.2)	4-1/16 (103.2)

ED6200 Series
Rim Panic Exit Devices
 Application to Metal, Wood or Composite Doors
 With 707A (KM), 708A (KM), or 710 (KM) Mullions

**Corbin
Russwin**
 www.corbinrusswin.com

SUPERSEDES

Template Number

Do Not Scale Drawing

T30943

Date

9/99