

NOTES:

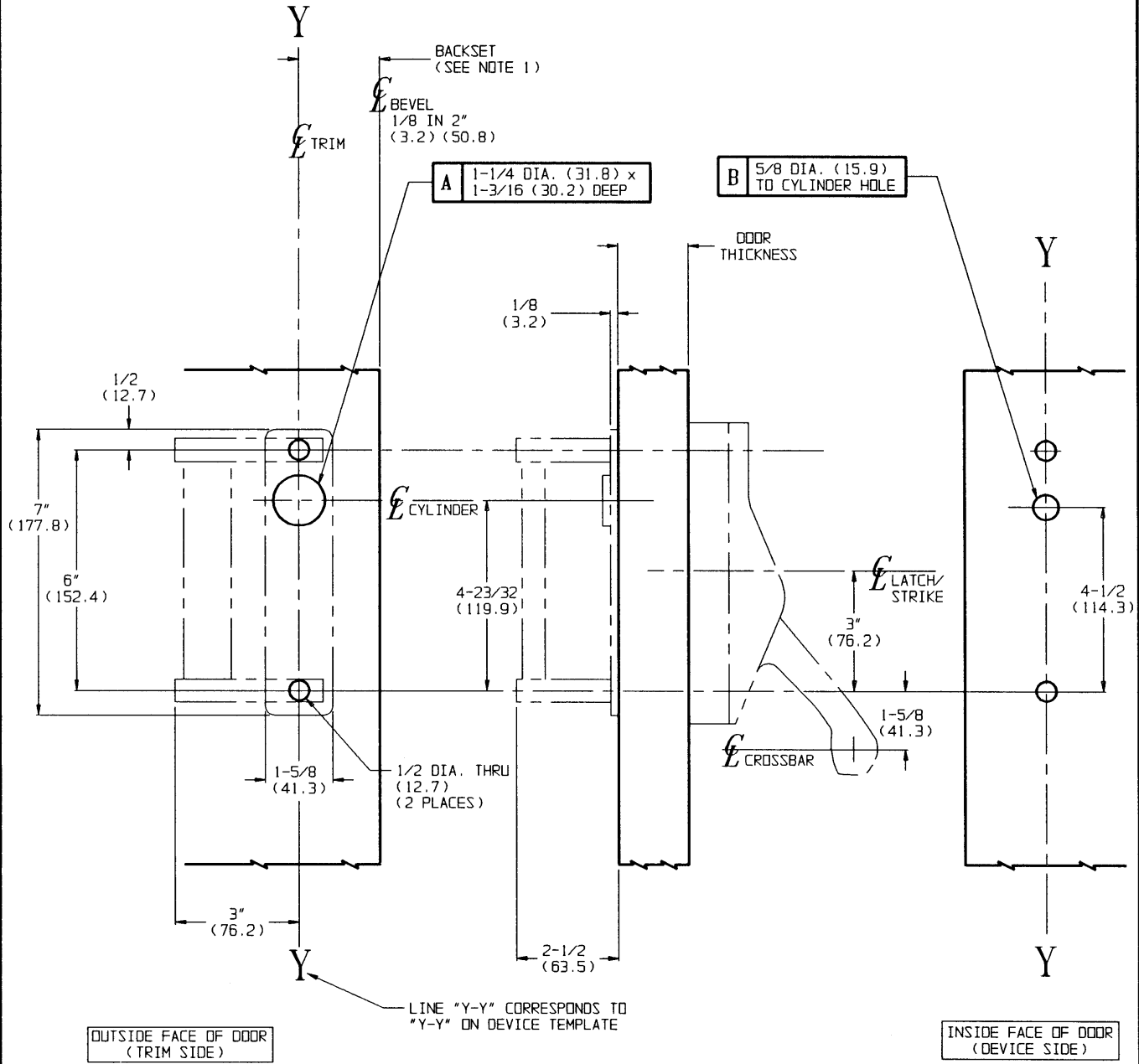
1. BACKSET IS MEASURED FROM CENTERLINE OF BEVEL WHICH IS CENTERPOINT OF DOOR THICKNESS. REFER TO DEVICE TEMPLATE FOR BACKSET.
2. DIMENSIONS GIVEN IN INCHES AND (MM).
3. REFER TO CHART FOR SPECIAL HOLES REQUIRED BY TRIM FUNCTION.

TEMPLATE CROSS REFERENCE

DESCRIPTION	TEMPLATE
ED7200 SERIES RIM DEVICE	T30568
ED7200 SERIES x S04	T30608

LHR SHOWN
RHR OPPOSITE

TRIM	A	B
P650		
P657	●	●



OUTSIDE FACE OF DOOR
(TRIM SIDE)

INSIDE FACE OF DOOR
(DEVICE SIDE)

RESPONSIBILITY

Door and Frame Manufacturers are responsible for providing adequate construction or reinforcements for proper installation of hardware shown. All architectural builders hardware must be installed on properly reinforced doors and frames, regardless of the type, material, or method of construction.

P 650

P 657

PULL BY ESCUTCHEON TRIM
CROSSBAR NARROW STILE
RIM DEVICE

**Corbin
Russwin**
www.corbinrusswin.com

DO NOT SCALE DRAWING

SUPERSEDES W24852, 23176C	DR. BTH	DATE 03/29/93	TEMPLATE NUMBER T30574
------------------------------	------------	------------------	---------------------------