

MOUNTING INFORMATION

- For Fire Rated Exit Devices:
Sex nuts or through bolts are required for wood core, wood and plastic covered composite doors, and any type of door without reinforcements.

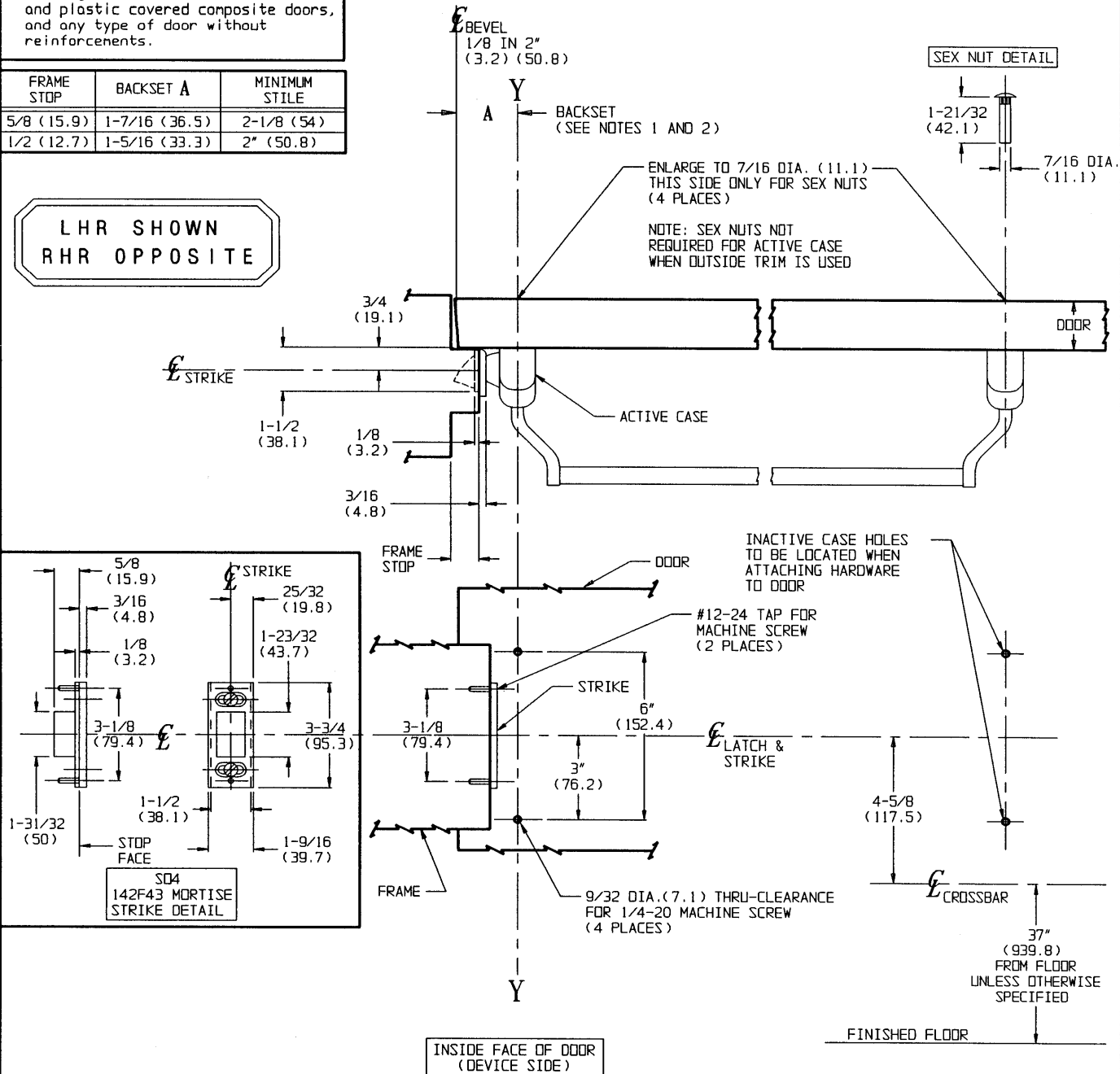
FRAME STOP	BACKSET A	MINIMUM STILE
5/8 (15.9)	1-7/16 (36.5)	2-1/8 (54)
1/2 (12.7)	1-5/16 (33.3)	2" (50.8)

LHR SHOWN
RHR OPPOSITE

SINGLE DOOR APPLICATIONS ONLY

TEMPLATE CROSS REFERENCE

DESCRIPTION	TEMPLATE
ED7200 SERIES RIM DEVICE	T30568



- NOTES:
- BACKSET IS MEASURED FROM CENTERLINE OF BEVEL WHICH IS CENTERPOINT OF DOOR THICKNESS.
 - FOR PREPARATION OF TRIM, REFER TO SEPARATE TEMPLATE.
 - DIMENSIONS GIVEN IN INCHES AND (MM).

RESPONSIBILITY

Door and Frame Manufacturers are responsible for providing adequate construction or reinforcements for proper installation of hardware shown. All architectural builders hardware must be installed on properly reinforced doors and frames, regardless of the type, material, or method of construction.

ED7200 SERIES BY S04

CROSSBAR NARROW STILE
RIM DEVICE BY MORTISE STRIKE

Corbin Russwin
www.corbinrusswin.com

DO NOT SCALE DRAWING

SUPERSEDES	VT30364	DR.	BTH	
DATE	03/24/93	TEMPLATE NUMBER	T30608	