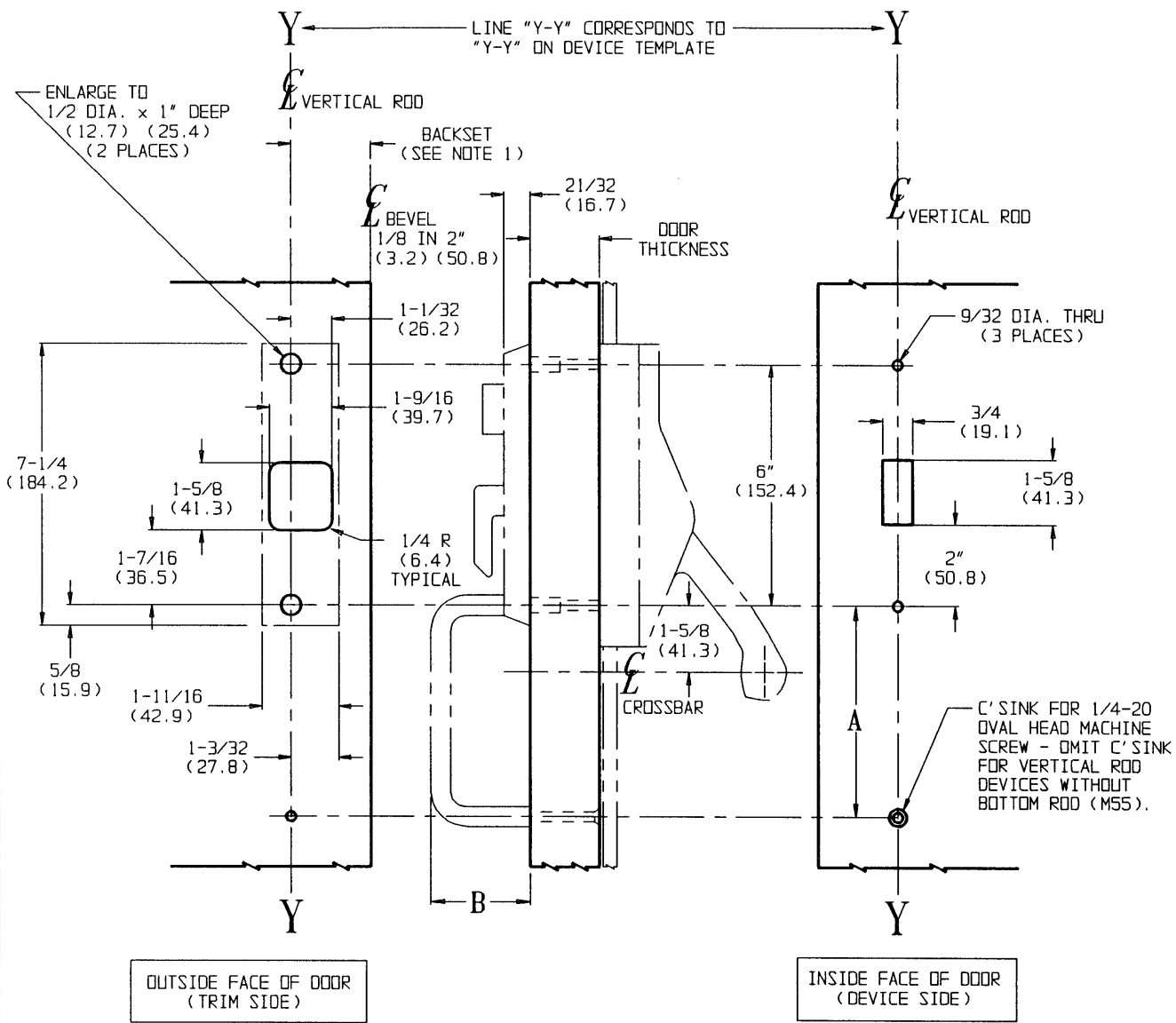


DESCRIPTION	TEMPLATE
E07400 SERIES VERTICAL ROD DEVICE	T30472

A	B	TRIM
5-1/2 (139.7)	1-7/8 (47.6)	0355, 0356, 0357
6" (152.4)	2-3/8 (60.3)	0455, 0456, 0457

LHR SHOWN  
RHR OPPOSITE

- NOTES:
- BACKSET IS MEASURED FROM CENTERLINE OF BEVEL WHICH IS CENTERPOINT OF DOOR THICKNESS. REFER TO DEVICE TEMPLATE FOR BACKSET.
  - CUTOUTS TO BE 1-1/4" (31.8) DEEP UNLESS OTHERWISE SPECIFIED.
  - TEMPLATE ALSO APPLIES TO "MR" MASTER RING VERSIONS.
  - DIMENSIONS GIVEN IN INCHES AND (MM).



SUPERSEDES:  
W25233, W25378, 22684C, 22852C

**RESPONSIBILITY**

Door and Frame Manufacturers are responsible for providing adequate construction or reinforcements for proper installation of hardware shown. All architectural builders hardware must be installed on properly reinforced doors and frames, regardless of the type, material, or method of construction.

0355    0455  
0356    0456  
0357    0457

OPERATOR PULL ESCUTCHEON  
CROSSBAR NARROW STILE  
VERTICAL ROD DEVICE

**Corbin Russwin**  
www.corbinrusswin.com

DO NOT SCALE DRAWING

SUPERSEDES	NOTE ABOVE	DR.	BTH	APPROVED
DATE	03/29/93	TEMPLATE NUMBER	T30471	