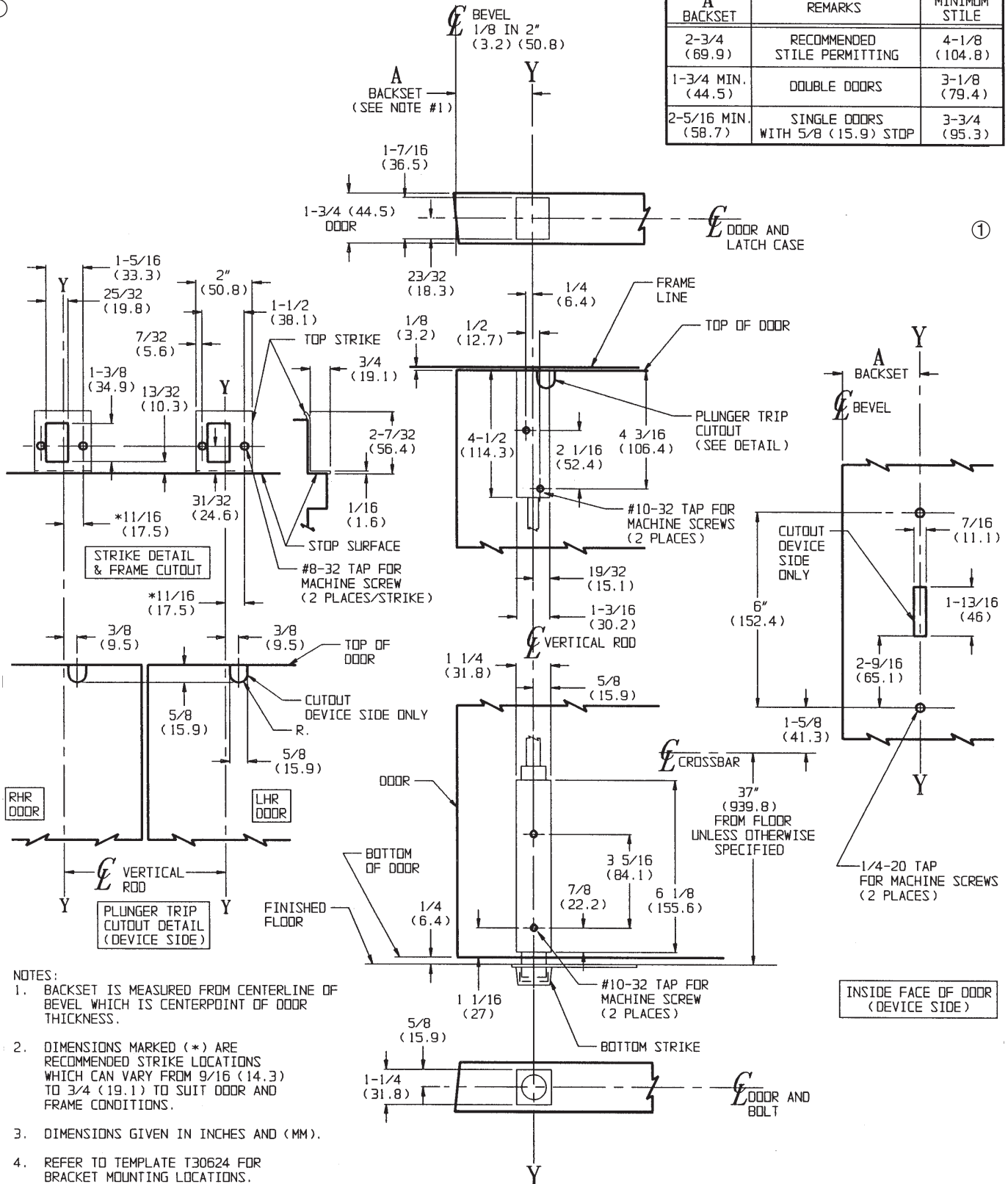


①

| A BACKSET | REMARKS | MINIMUM STILE |
|--------------------|-----------------------------------|---------------|
| 2-3/4 (69.9) | RECOMMENDED STILE PERMITTING | 4-1/8 (104.8) |
| 1-3/4 MIN. (44.5) | DOUBLE DOORS | 3-1/8 (79.4) |
| 2-5/16 MIN. (58.7) | SINGLE DOORS WITH 5/8 (15.9) STOP | 3-3/4 (95.3) |



NOTES:

- BACKSET IS MEASURED FROM CENTERLINE OF BEVEL WHICH IS CENTERPOINT OF DOOR THICKNESS.
- DIMENSIONS MARKED (*) ARE RECOMMENDED STRIKE LOCATIONS WHICH CAN VARY FROM 9/16 (14.3) TO 3/4 (19.1) TO SUIT DOOR AND FRAME CONDITIONS.
- DIMENSIONS GIVEN IN INCHES AND (MM).
- REFER TO TEMPLATE T30624 FOR BRACKET MOUNTING LOCATIONS.

RESPONSIBILITY

DOOR AND FRAME MANUFACTURERS ARE RESPONSIBLE FOR PROVIDING ADEQUATE CONSTRUCTION OR REINFORCEMENTS FOR PROPER INSTALLATION OF HARDWARE SHOWN. ALL ARCHITECTURAL BUILDERS HARDWARE MUST BE INSTALLED ON PROPERLY REINFORCED DOORS AND FRAMES, REGARDLESS OF TYPE, MATERIAL, OR METHOD OF CONSTRUCTION.

**ED7800 Series
ED7800A Series**
Crossbar Narrow Stile Concealed
Vertical Rod Device
(Door Face Mounting - Metal Doors)



ASSA ABLOY

www.corbinrusswin.com

| | | |
|-----------------|----------|----------------------|
| SUPERSEDES | T30625 | DO NOT SCALE DRAWING |
| TEMPLATE NUMBER | T30625-1 | DATE 10-10 |