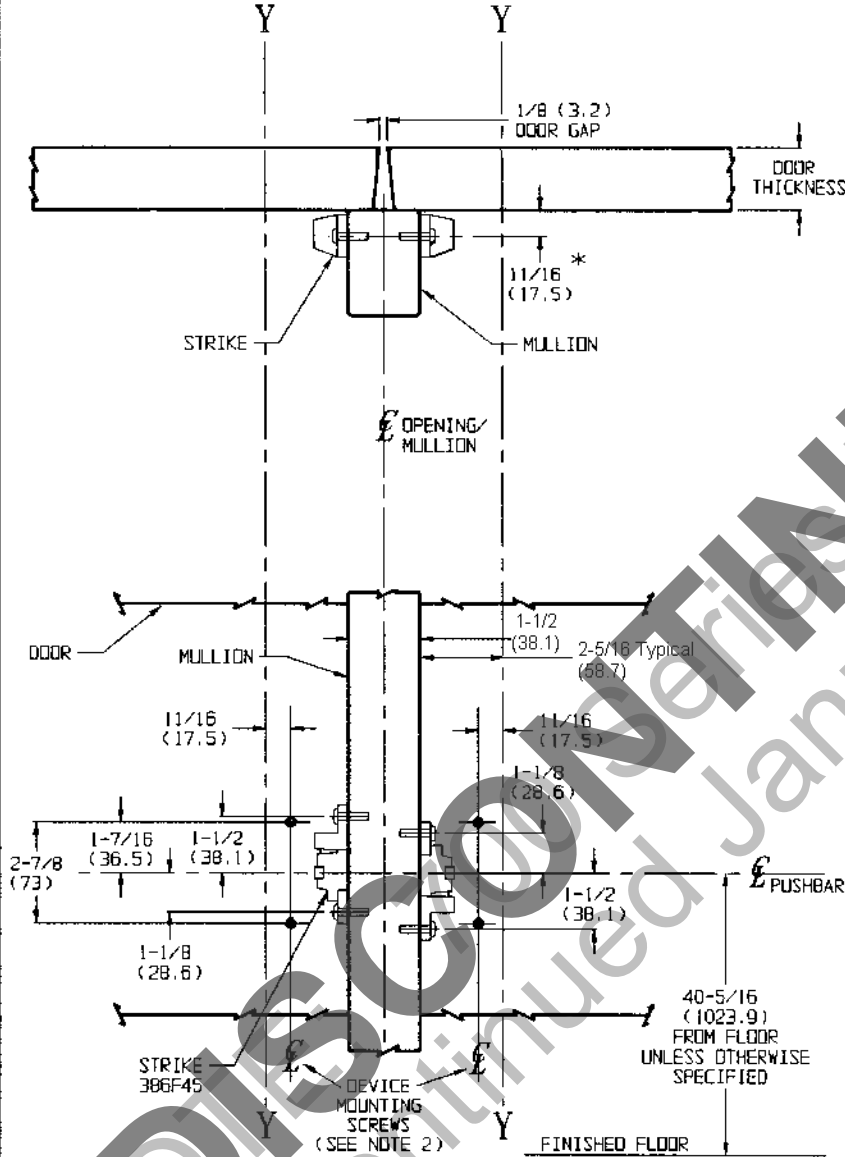


DOUBLE DOOR APPLICATIONS ONLY

TEMPLATE CROSS REFERENCE (FOR SINGLE DOOR APPLICATIONS)

DESCRIPTION	TEMPLATE
ED8200 SERIES RIM DEVICE	T30436
ED8200 SERIES x M61 & M62	T30491

LINES "Y-Y"
CORRESPOND TO
"Y-Y" ON DEVICE
AND TRIM TEMPLATES



RECOMMENDED MINIMUM STILE

STILE	DESCRIPTION
5-1/4 (133.4)	ED8200 SERIES
5-1/2 (139.7)	ED8200 SERIES x M61 & M62

NOTES:

- FOR 707A (KM), 708A (KM) AND 710 (KM) MULLION FRAME PREPARATION TEMPLATE, REFER TO T30882.
- FOR OTHER DEVICE AND STRIKE MOUNTING SPECIFICATIONS, REFER TO APPROPRIATE SINGLE DOOR APPLICATION TEMPLATE.
- CAUTION:** WHEN GLASS BEAD SHIMS ARE USED TO RAISE DEVICE OFF SURFACE OF DOOR, REFER TO GLASS BEAD SHIM TEMPLATE T30494 FOR PROPER STRIKE MOUNTING DIMENSIONS.
- FOR PREPARATION OF TRIM, REFER TO SEPARATE TEMPLATE.
- DIMENSIONS GIVEN IN INCHES AND (MM).

ED8200 Series
Rim Panic Exit Devices
Application to Metal, Wood, or Composite Doors
With 707A (KM), 708A (KM), or 710 (KM) Mullion

**Corbin
Russwin**
www.corbinrusswin.com

SUPERSEDES

Do Not Scale Drawing

Template Number

T30942

Date

9/99