

MOUNTING INFORMATION

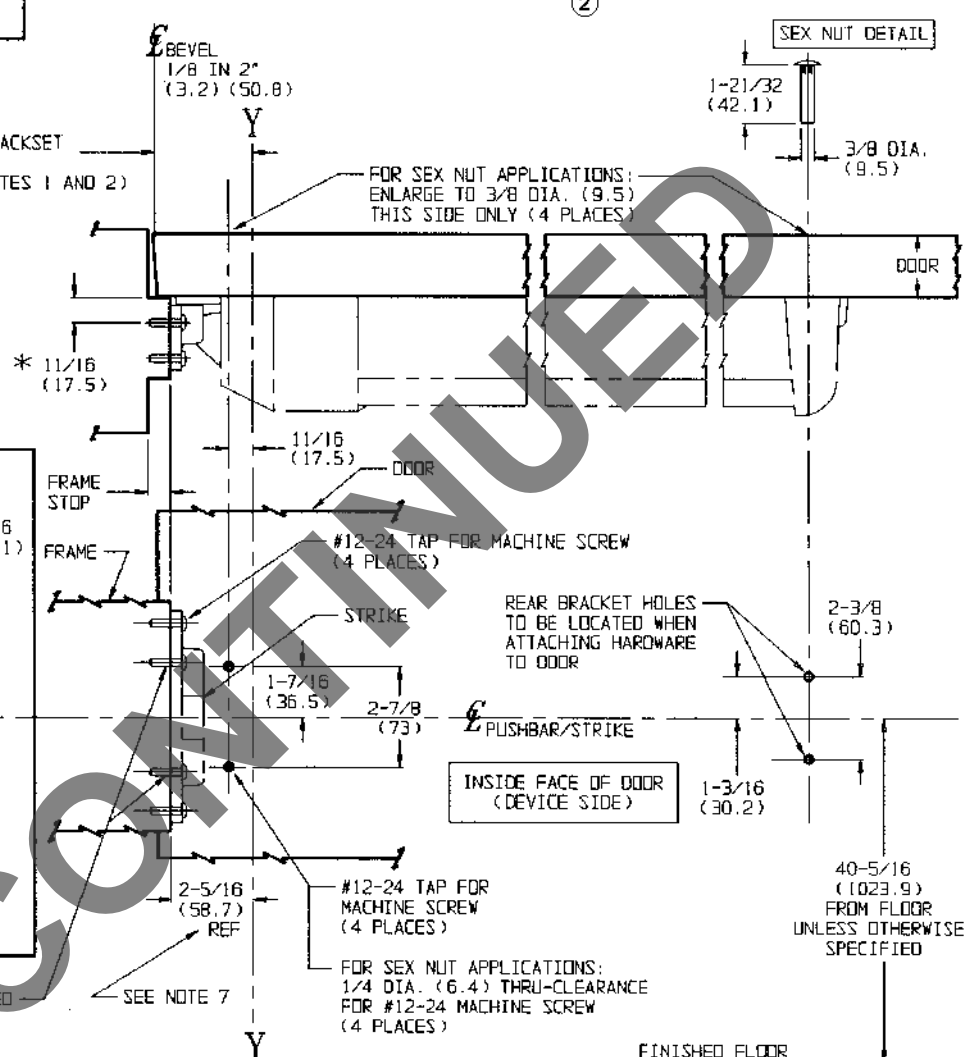
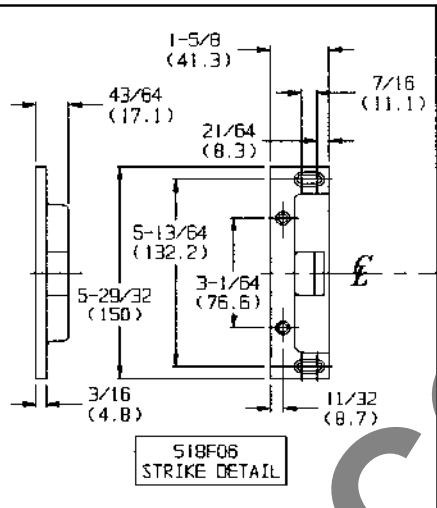
- **For Fire Rated Exit Devices:**
Sex nuts or through bolts **are required** for wood core, wood and plastic covered composite doors, and any type of door without reinforcements.

SINGLE DOOR APPLICATIONS ONLY

TEMPLATE CROSS REFERENCE
(FOR DOUBLE DOOR APPLICATIONS)

| DESCRIPTION | TEMPLATE |
|-------------------|----------|
| 508 MULLION | T30326 |
| 708A (KM) Mullion | T30941 |

LHR SHOWN
RHR OPPOSITE



THESE HOLES TO BE DRILLED AND TAPPED AFTER STRIKE IS PROPERLY ADJUSTED

- NOTES:**
- BACKSET IS MEASURED FROM CENTERLINE OF BEVEL WHICH IS CENTERPOINT OF DOOR THICKNESS.
 - CAUTION:** THIS TEMPLATE IS FOR SINGLE DOOR APPLICATIONS ONLY. REFER TO APPROPRIATE MULLION TEMPLATE FOR DOUBLE DOOR APPLICATIONS. NOTE THAT THE BACKSET DIMENSION FOR SINGLE DOORS DIFFERS FROM THE BACKSET FOR DOUBLE DOORS.
 - * **CAUTION:** WHEN GLASS BEAD SHIMS ARE USED TO RAISE DEVICE OFF SURFACE OF DOOR, REFER TO GLASS BEAD SHIM TEMPLATE T30494 FOR PROPER STRIKE MOUNTING DIMENSIONS.
 - FOR PREPARATION OF TRIM, REFER TO SEPARATE TEMPLATE.
 - RECOMMENDED MINIMUM STILE 5" (127).
 - DIMENSIONS GIVEN IN INCHES AND (MM).
 - THIS REFERENCE DIMENSION APPLIES TO A SINGLE DOOR PREPPED TO A 2-3/4" (69.9) BACKSET WITH A 5/8" (15.9) FRAME STOP AND 1/8" (3.2) DOOR GAP. WHEN PREPPED DOOR IS MOUNTED IN A FRAME WITH A 1/2" (12.7) STOP, USE 1/8" (3.2) SHIM UNDER STRIKE TO MAINTAIN PROPER LATCH ENGAGEMENT.

ED8200A Series
Rim Fire Exit Devices
Application to Metal or Wood / Composite Doors



| | | |
|-----------------|----------|----------------------|
| SUPERSEDES | T30465-1 | Do Not Scale Drawing |
| Template Number | T30465-2 | Date |
| | | 9/99 |