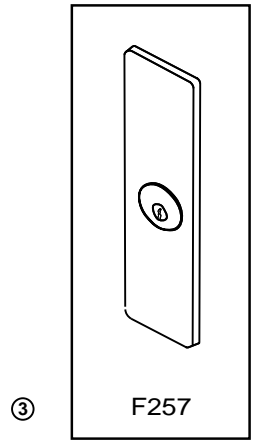
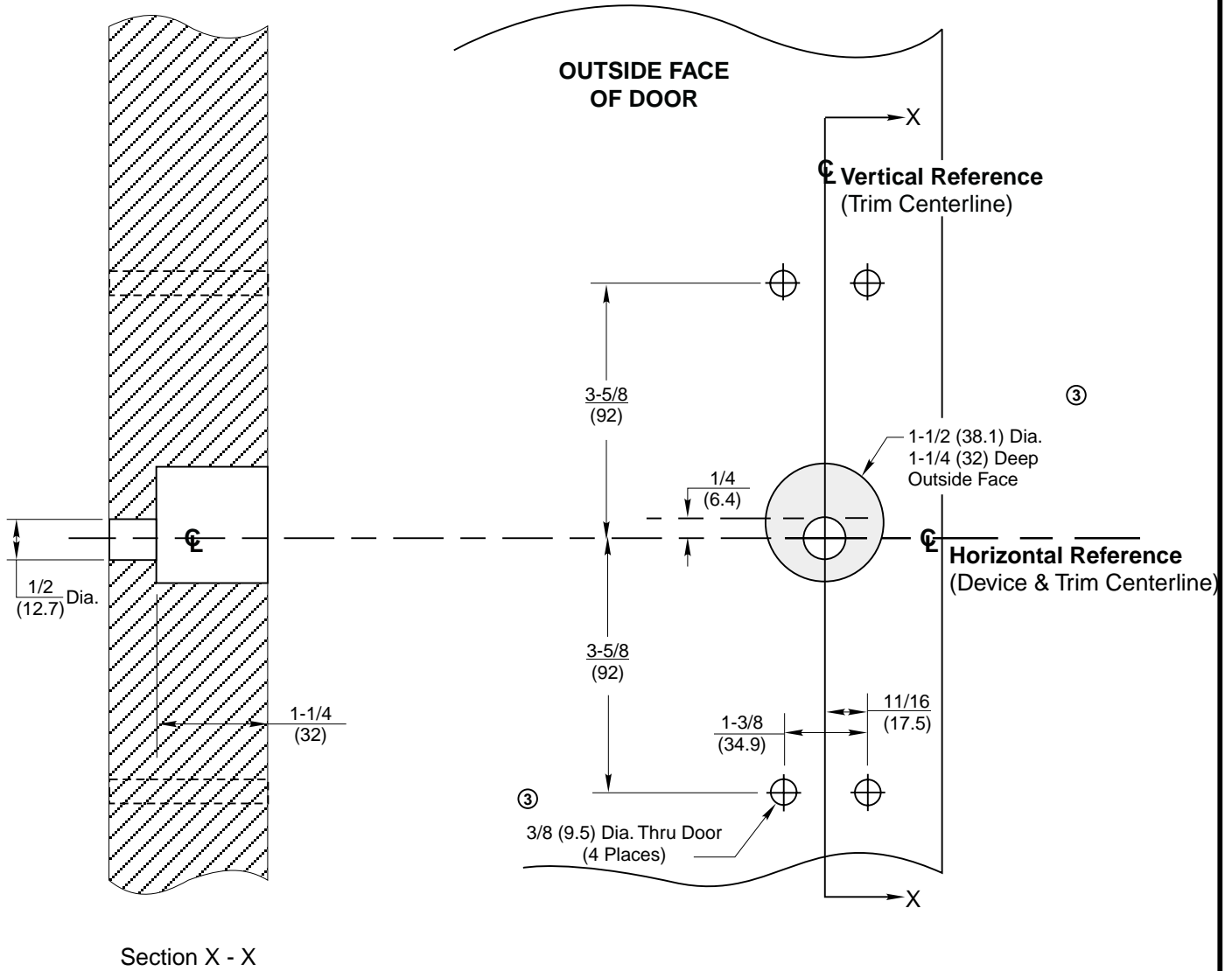


**Notes:**

1. This template is an addition to the device template. Locate centerlines using horizontal and vertical references on device template.
2. Do not scale drawing.
3. Dimensions are in inches (mm).
4. LHR door shown. Preparation is typical for both door hands.
5. Provide adequate structural support to maintain door integrity during operation.
6. Prepare mounting holes when installing trim.
7. Dimensions given about a centerline are symmetrical.



F257



Section X - X

**F257 Trim**  
 With ED5200, ED5400 or ED5800 Series  
 Rim, SecureBolt, and Vertical Rod Exit Devices  
**Wood or Composite Door Preparation**

 www.corbinrusswin.com	
SUPERSEDES T30854-2	DO NOT SCALE DRAWING
TEMPLATE NUMBER	T30854-3
DATE	10-01