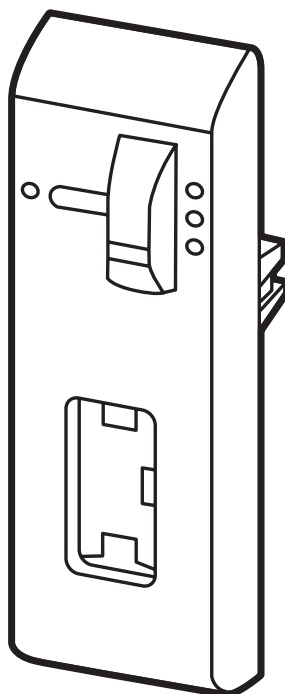


Dogging Indicator (AUX188)

FE6600 and MP6600 Series



 **WARNING**

This product can expose you to lead which is known to the state of California to cause cancer and birth defects or other reproductive harm. For more information go to www.P65warnings.ca.gov.

Dogging Indicator (AUX188)

FE6600 and MP6600 Series

Installation Instructions



TOC	Table of Contents
1	Dogging Indicator Installation3
a	Latch Door3
b	Place Template3
c	Drill Holes3
d	Countersink Holes.....3
e	Install Indicator.....4
f	Check for Proper Operation.....4

Dogging Indicator (AUX188)

FE6600 and MP6600 Series

**Corbin
Russwin**

ASSA ABLOY

Installation Instructions

1

Dogging Indicator

a

Latch Door

Ensure door is latched and all bolts are projected.

b

Place Template

Place plastic field template on pin in top rod through oval cut-out in door. (Figure 1)

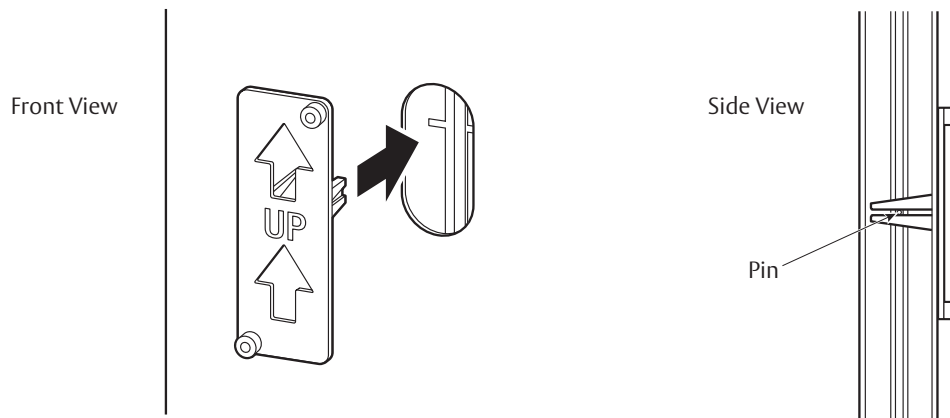


Figure 1

c

Drill Holes

Using a #7 drill bit, drill two (2) holes completely through door, making sure drill remains square to face of door. (Figure 2)

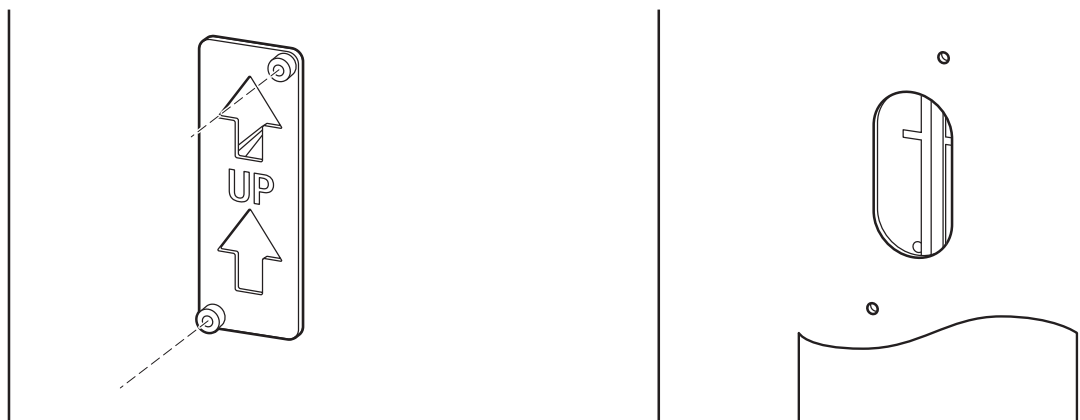


Figure 2

d

Countersink Holes

Countersink holes on opposite face of door to fit supplied oval head screws. (Figure 3)

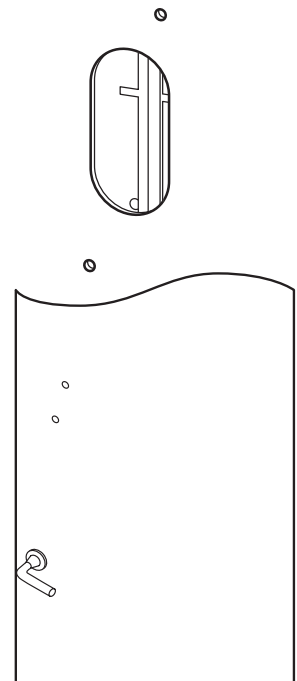


Figure 3

The ASSA ABLOY Group is the global leader in access solutions. Every day, we help billions of people experience a more open world.

ASSA ABLOY Opening Solutions leads the development within door openings and products for access solutions in homes, businesses and institutions. Our offering includes doors, frames, door and window hardware, locks, perimeter fencing, access control and service.

1

Dogging Indicator (cont.)

e

Install Indicator

Install indicator on inside of door with supplied 10-24 x 2" oval head screws. Make sure that control fingers grab top rod pin. (Figure 4)

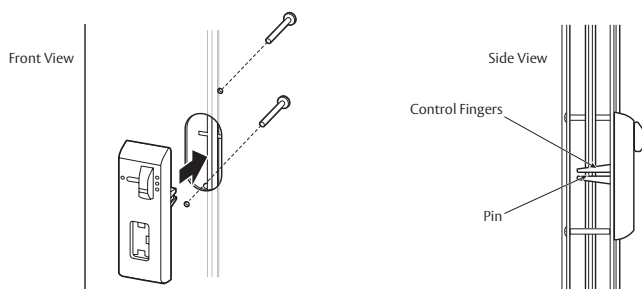


Figure 4

f

Check for Proper Operation

Rotate lever until indicator window shows a single latch point. (Figure 5)

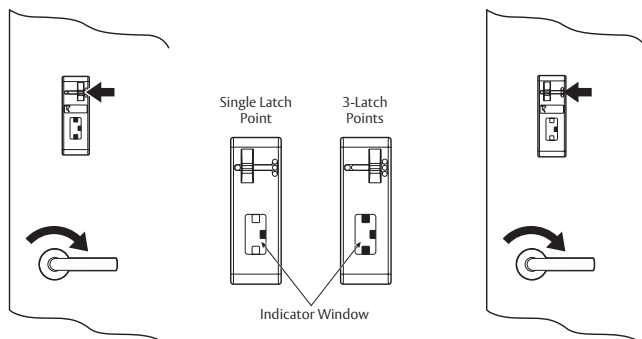


Figure 5

Note

To dog top and bottom latches in retracted state, fully rotate lever and move slider on indicator to left.