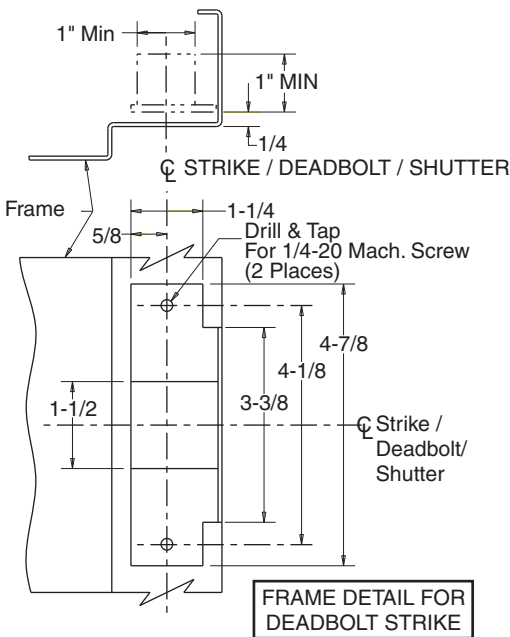
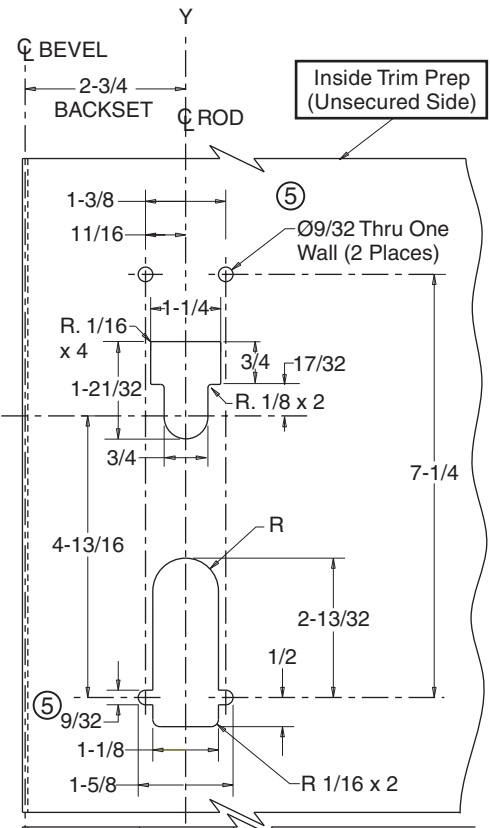
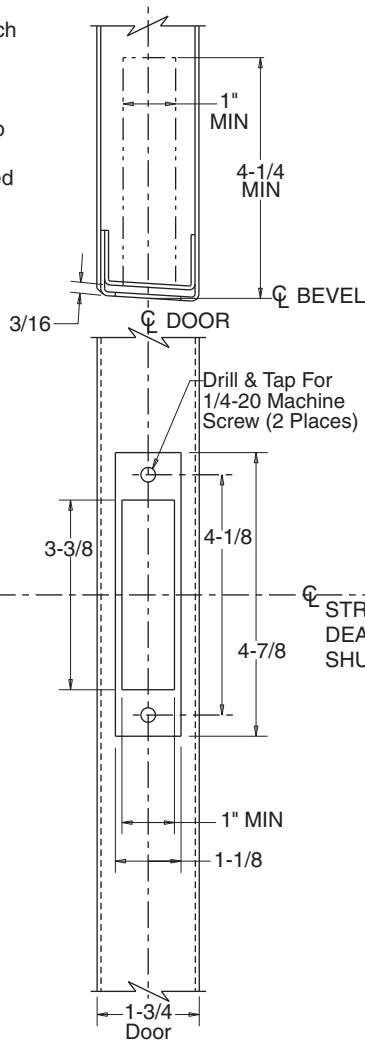
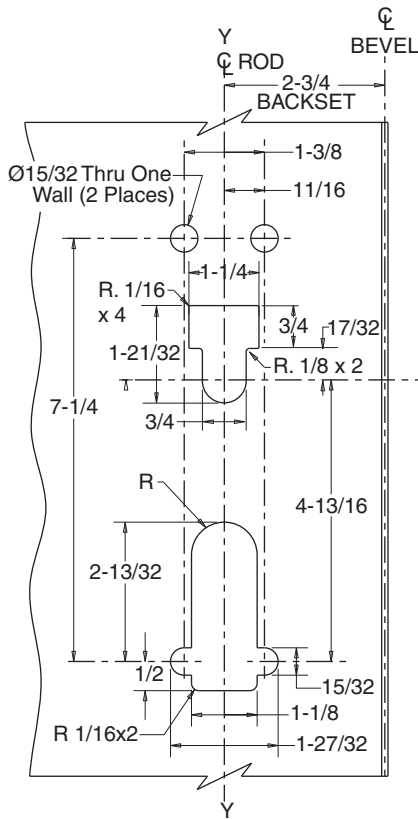


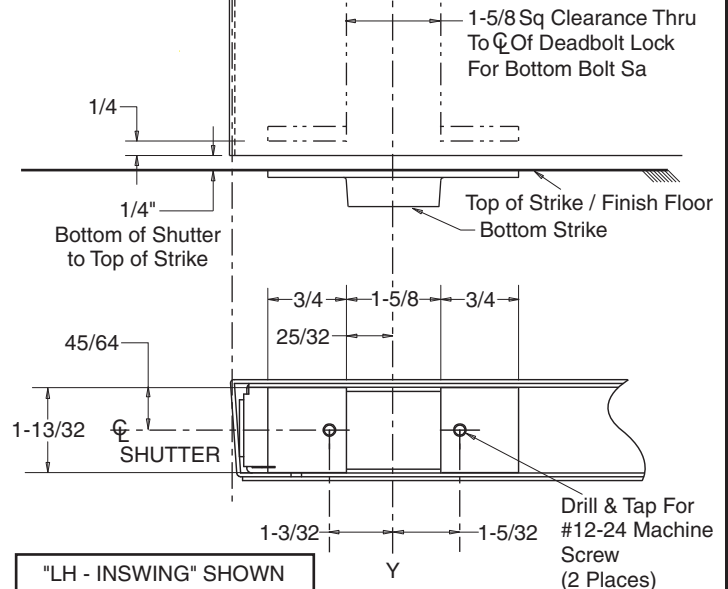
**Notes:**

1. Backset is measured from centerline of bevel which is centerpoint of shutter thickness.
2. Dimensions given in inches.
3. Bevel is 1/8 in 2".
4. See Sheet 2 for Head Detail for Top Latch and Top Shutter Detail.
5. See Sheet 3 for Bottom Strike Detail for Four Sided Shutter Frame.



**CAUTION: DOOR AND FRAME MANUFACTURERS**

When door gasketing or silencers are used, proper allowances must be made for strike location to maintain a common centerline with lock and door as shown so that bolt will freely enter the deadbolt strike.



**RESPONSIBILITY**

DOOR AND FRAME MANUFACTURERS ARE RESPONSIBLE FOR PROVIDING ADEQUATE CONSTRUCTION OR REINFORCEMENTS FOR PROPER INSTALLATION OF HARDWARE SHOWN. ALL ARCHITECTURAL BUILDERS HARDWARE MUST BE INSTALLED ON PROPERLY REINFORCED DOORS AND FRAMES, REGARDLESS OF TYPE, MATERIAL, OR METHOD OF CONSTRUCTION.

**FE6700  
MULTI-POINT LOCK FOR  
WINDOW SHUTTER APPLICATIONS  
(METAL SHUTTERS)**



**ASSA ABLOY**

www.corbinrusswin.com

SUPERSEDES	T31171-4	DO NOT SCALE DRAWING
TEMPLATE NUMBER	T31171-5	SHEET 1 of 3
		DATE 02-22

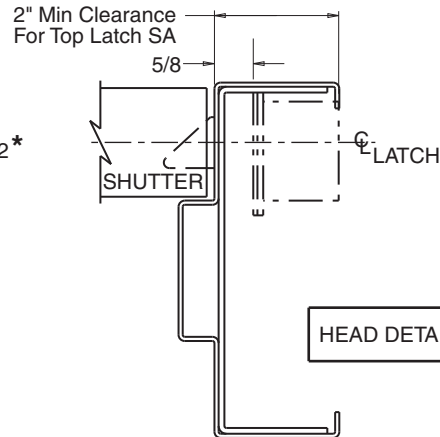
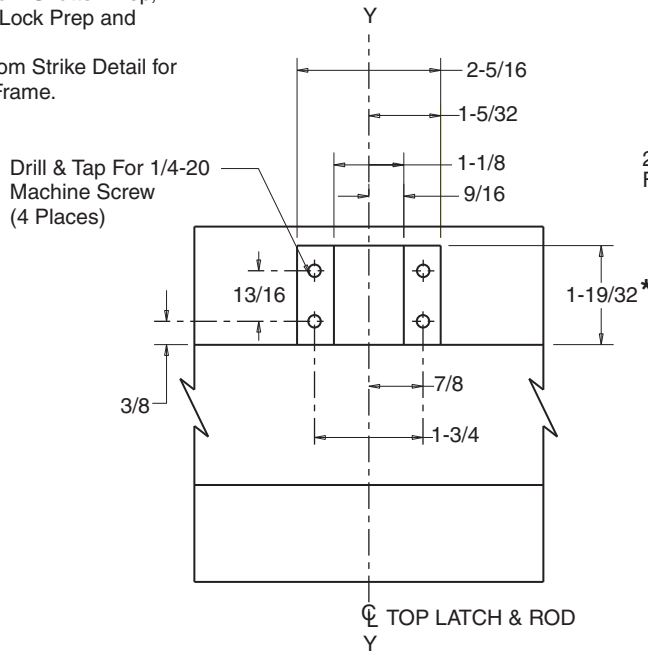
Experience a safer and more open world

**NOTE:**

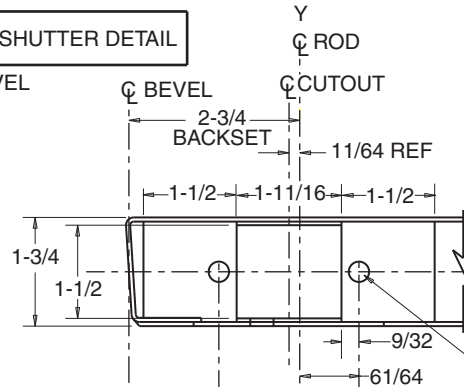
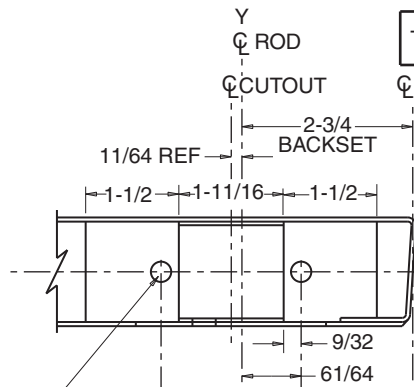
1. See Sheet 1 for Bottom Shutter Prep, Trim Prep, Deadbolt Lock Prep and Frame Strike Prep.
2. See Sheet 3 for Bottom Strike Detail for Four Sided Shutter Frame.

**CAUTION: DOOR AND FRAME MANUFACTURERS**

When door gasketing or silencers are used, proper allowances must be made for latch location to maintain a common centerline with lock and door as shown so that bolt will freely enter the top latch front. "★" dimension will be affected.

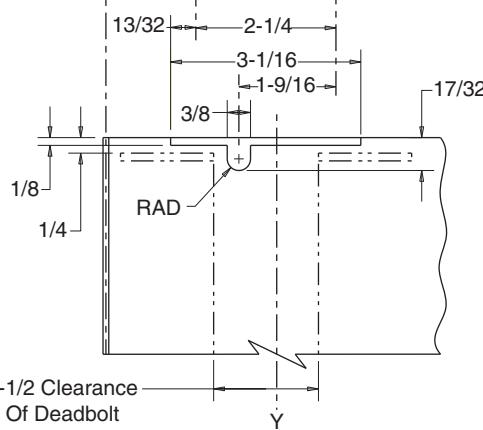
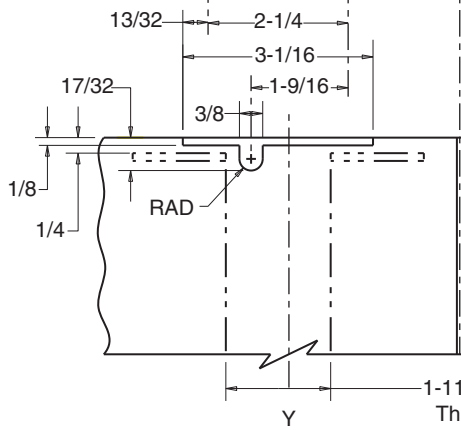


HEAD DETAIL FOR TOP LATCH



Drill & Tap For 5/16-18 Machine Screw (2 Places)

Drill & Tap For 5/16-18 Machine Screw (2 Places)



"LH - INSWING"

"RH - INSWING"

**RESPONSIBILITY**

DOOR AND FRAME MANUFACTURERS ARE RESPONSIBLE FOR PROVIDING ADEQUATE CONSTRUCTION OR REINFORCEMENTS FOR PROPER INSTALLATION OF HARDWARE SHOWN. ALL ARCHITECTURAL BUILDERS HARDWARE MUST BE INSTALLED ON PROPERLY REINFORCED DOORS AND FRAMES, REGARDLESS OF TYPE, MATERIAL, OR METHOD OF CONSTRUCTION.

**FE6700  
MULTI-POINT LOCK FOR  
WINDOW SHUTTER APPLICATIONS  
(METAL SHUTTERS)**

**Corbin  
Russwin**  
**ASSA ABLOY**

www.corbinrusswin.com

SUPERSEDES	T31171-4	DO NOT SCALE DRAWING	
TEMPLATE NUMBER	T31171-5	SHEET	DATE
		2 of 3	02-22

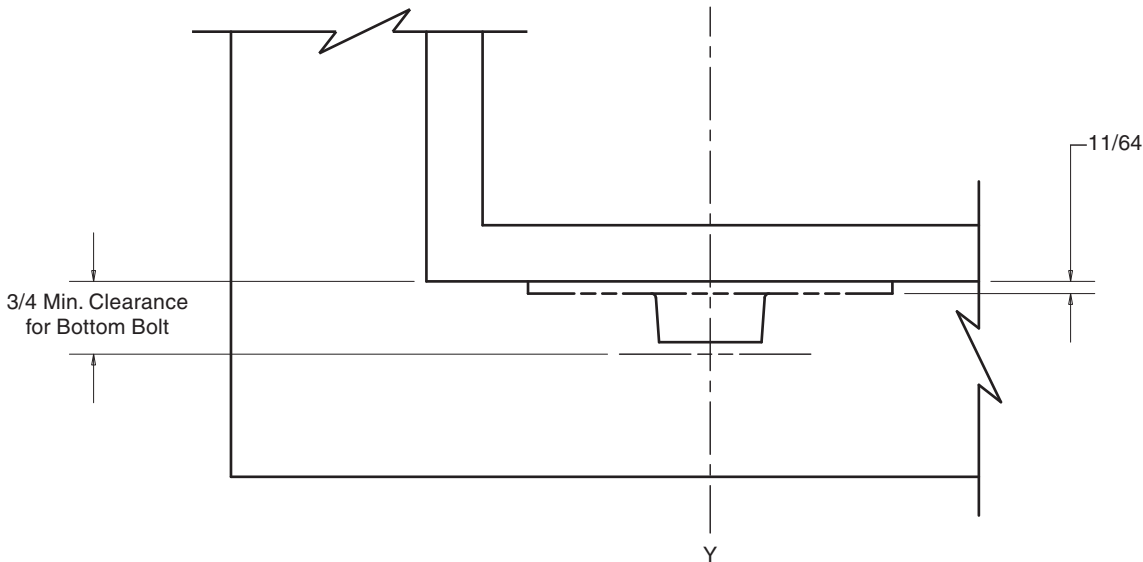
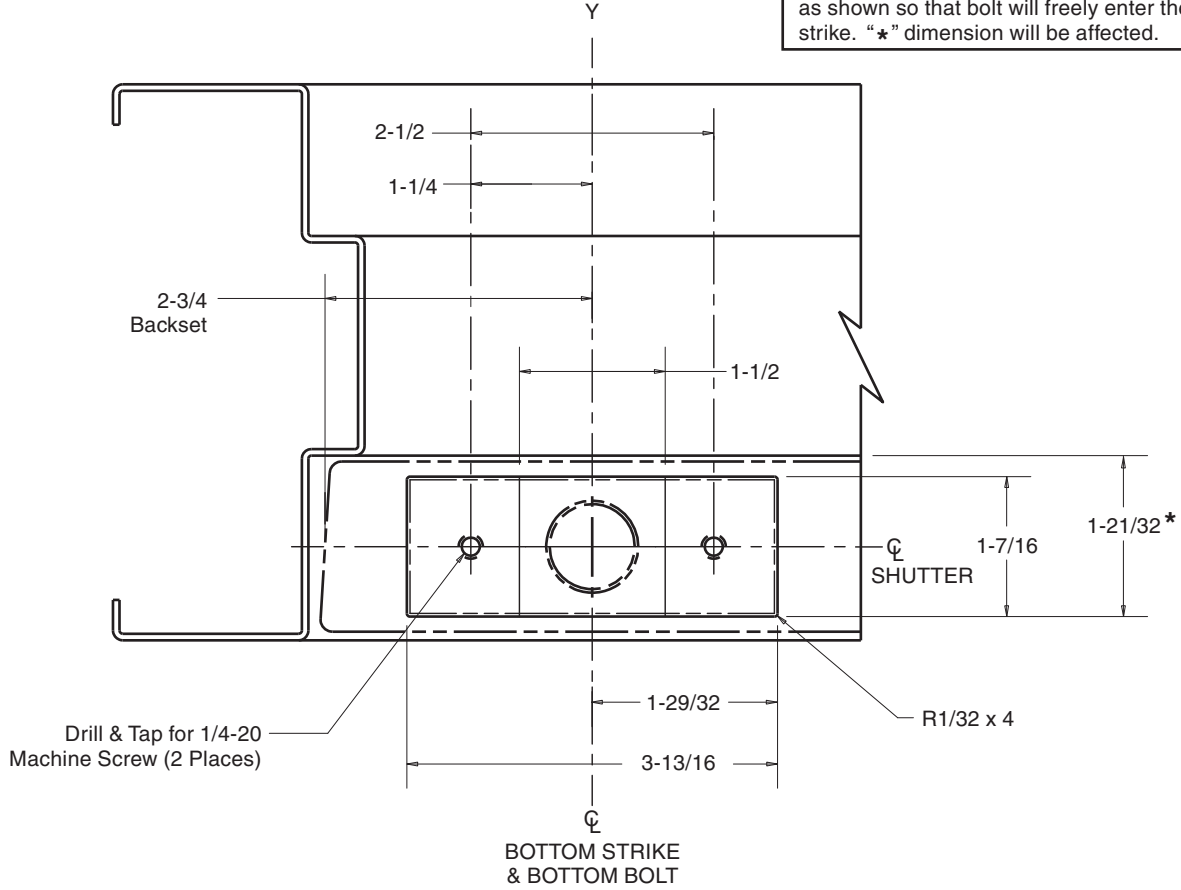
Experience a safer  
and more open world

**NOTE:**

1. See Sheet 1 for Bottom Shutter Prep, Trim Prep, Deadbolt Lock Prep and Frame Strike Prep.
2. See Sheet 2 for Head Detail for Top Latch and Top Shutter Detail.

**CAUTION: DOOR AND FRAME MANUFACTURERS**

When door gasketing or silencers are used, proper allowances must be made for bottom strike location to maintain a common centerline with lock and door as shown so that bolt will freely enter the bottom strike. "\*" dimension will be affected.



**BOTTOM STRIKE DETAIL FOR FOUR SIDED SHUTTER FRAME**

**RESPONSIBILITY**

DOOR AND FRAME MANUFACTURERS ARE RESPONSIBLE FOR PROVIDING ADEQUATE CONSTRUCTION OR REINFORCEMENTS FOR PROPER INSTALLATION OF HARDWARE SHOWN. ALL ARCHITECTURAL BUILDERS HARDWARE MUST BE INSTALLED ON PROPERLY REINFORCED DOORS AND FRAMES, REGARDLESS OF TYPE, MATERIAL, OR METHOD OF CONSTRUCTION.

**FE6700  
MULTI-POINT LOCK FOR  
WINDOW SHUTTER APPLICATIONS  
(METAL SHUTTERS)**



**ASSA ABLOY**

www.corbinruswin.com

SUPERSEDES	T31171-4	DO NOT SCALE DRAWING	
TEMPLATE NUMBER	T31171-5	SHEET	DATE
		3 of 3	02-22

Experience a safer  
and more open world