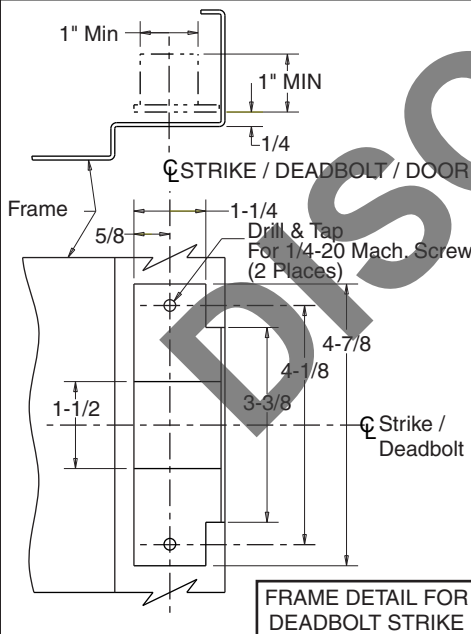
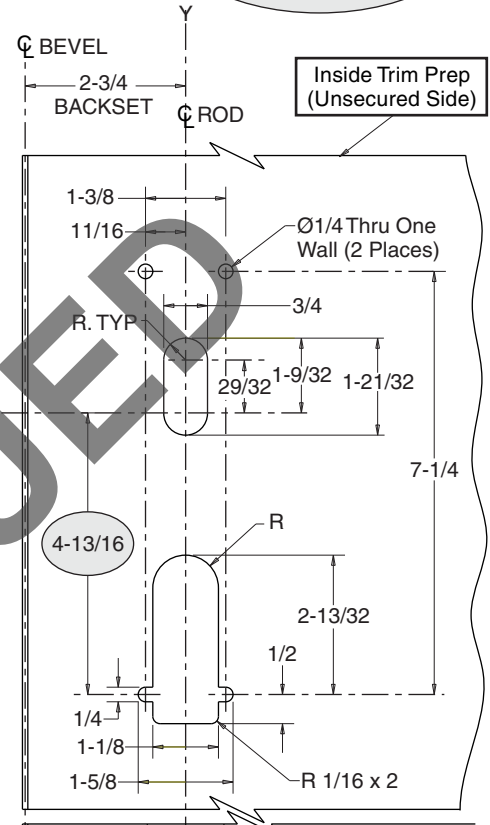
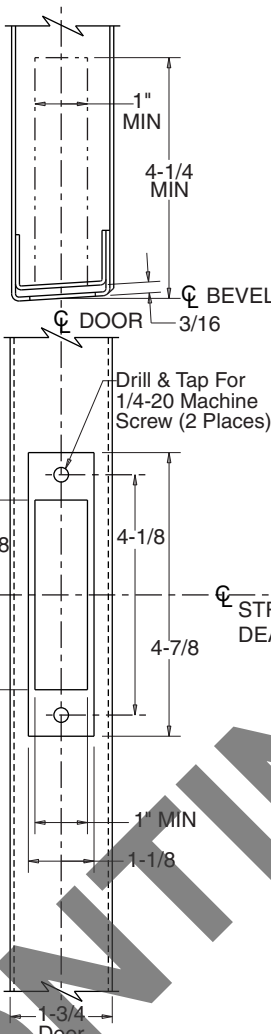
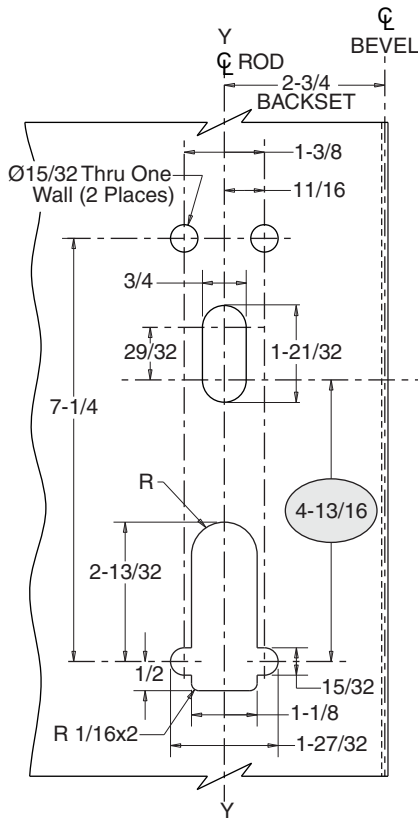


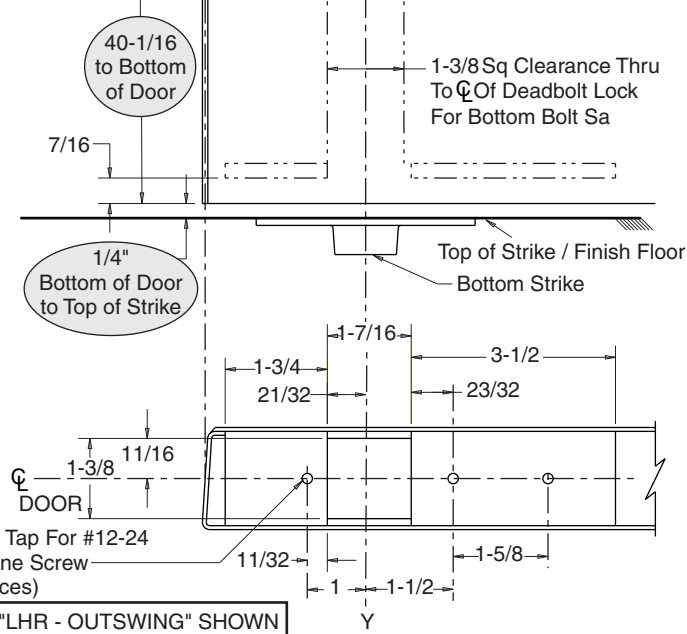
**Notes:**

1. Backset is measured from centerline of bevel which is centerpoint of door thickness.
2. Dimensions given in inches.
3. Bevel is 1/8 in 2".
4. See Sheet 2 for Top Door Prep, Top Jamb and Top Latch Prep.

**WARNING**  
 Device will not operate if the distance from the bottom of the door to the centerline of the deadbolt is not within the dimensions shown below.



**CAUTION: DOOR AND FRAME MANUFACTURERS**  
 When door gasketing or silencers are used, proper allowances must be made for strike location to maintain a common centerline with lock and door as shown so that bolt will freely enter the deadbolt strike.



**RESPONSIBILITY**  
 DOOR AND FRAME MANUFACTURERS ARE RESPONSIBLE FOR PROVIDING ADEQUATE CONSTRUCTION OR REINFORCEMENTS FOR PROPER INSTALLATION OF HARDWARE SHOWN. ALL ARCHITECTURAL BUILDERS HARDWARE MUST BE INSTALLED ON PROPERLY REINFORCED DOORS AND FRAMES, REGARDLESS OF TYPE, MATERIAL, OR METHOD OF CONSTRUCTION.

**FE6800  
 MULTI-POINT LOCK  
 (METAL DOORS)**

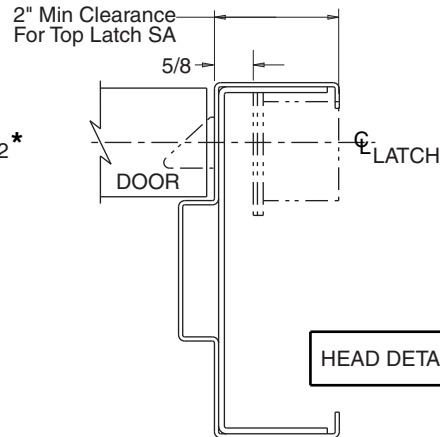
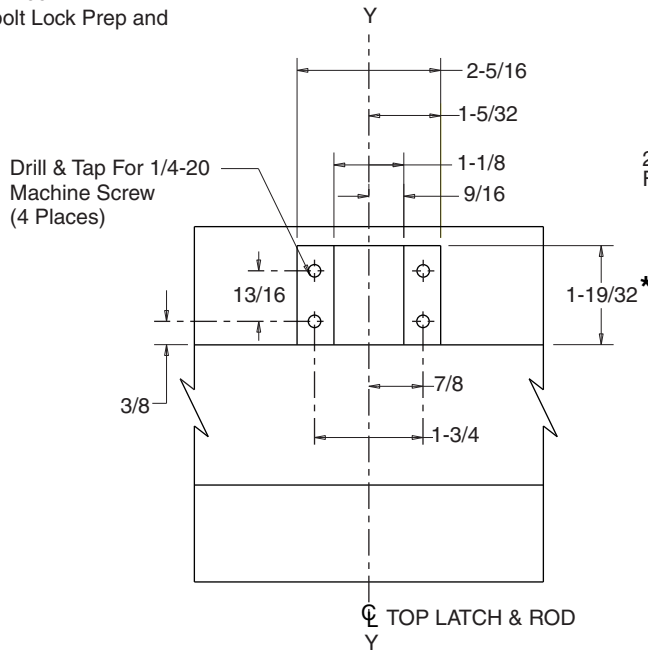
**Corbin Russwin®**  
**ASSA ABLOY**  
 www.corbinrusswin.com

SUPERSEDES	T31042-6	DO NOT SCALE DRAWING
TEMPLATE NUMBER	T31042-7	SHEET 1 of 2
		DATE 01-22

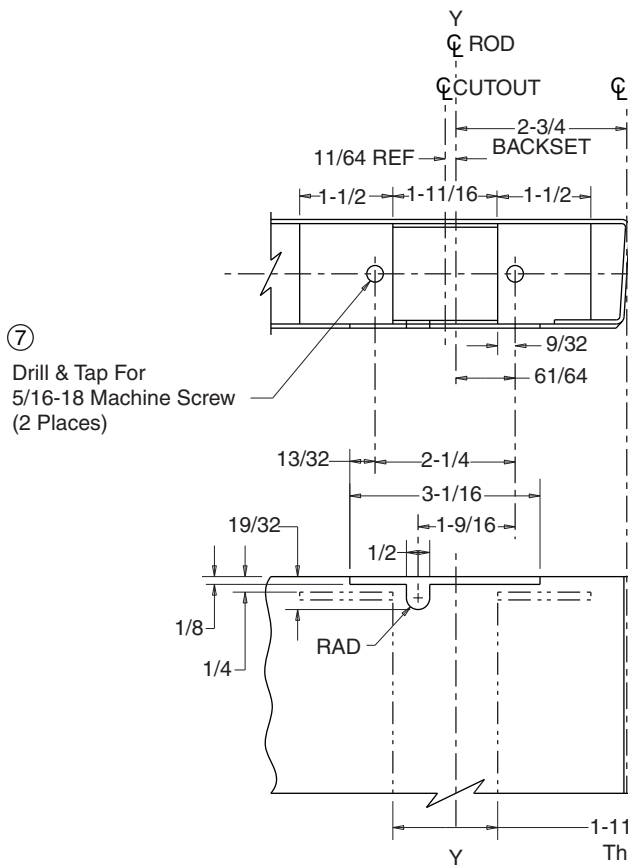
NOTE:  
See Sheet 1 for Bottom Door  
Prep, Trim Prep, Deadbolt Lock Prep and  
Frame Strike Prep.

CAUTION: DOOR AND FRAME MANUFACTURERS

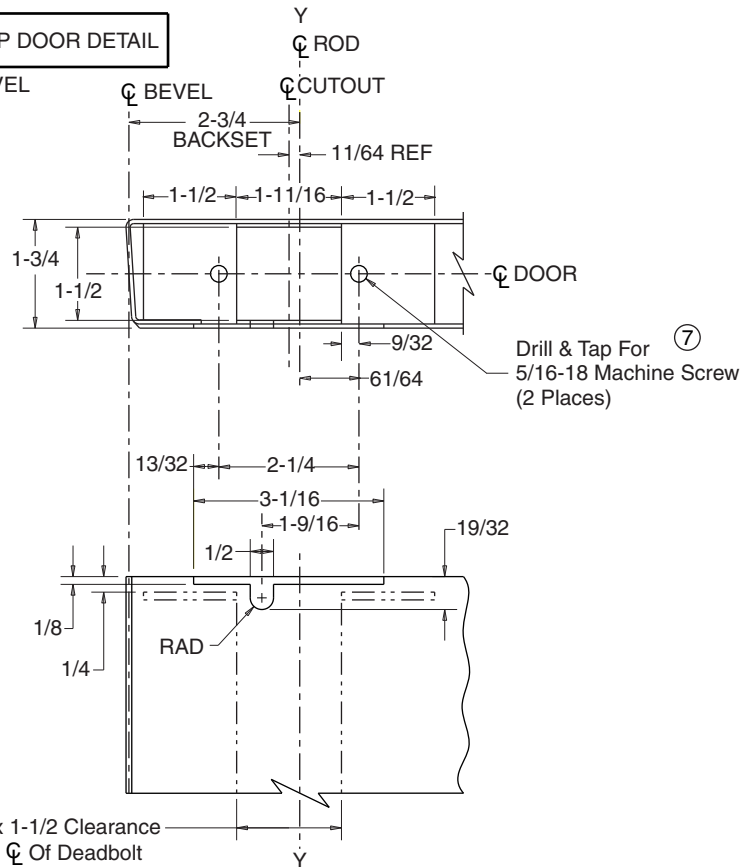
When door gasketing or silencers are used, proper allowances must be made for latch location to maintain a common centerline with lock and door as shown so that bolt will freely enter the top latch front. "★" dimension will be affected.



HEAD DETAIL FOR TOP LATCH



TOP DOOR DETAIL



⑦  
Drill & Tap For  
5/16-18 Machine Screw  
(2 Places)

⑦  
Drill & Tap For  
5/16-18 Machine Screw  
(2 Places)

1-11/16 x 1-1/2 Clearance  
Thru To  $\phi$  Of Deadbolt  
Lock For Tube SA

"LH - INSWING"  
"RHR - OUTSWING"

"RH - INSWING"  
"LHR - OUTSWING"

RESPONSIBILITY

DOOR AND FRAME MANUFACTURERS ARE RESPONSIBLE FOR PROVIDING ADEQUATE CONSTRUCTION OR REINFORCEMENTS FOR PROPER INSTALLATION OF HARDWARE SHOWN. ALL ARCHITECTURAL BUILDERS HARDWARE MUST BE INSTALLED ON PROPERLY REINFORCED DOORS AND FRAMES, REGARDLESS OF TYPE, MATERIAL, OR METHOD OF CONSTRUCTION.

FE6800  
MULTI-POINT LOCK  
(METAL DOORS)

Corbin  
Russwin®  
ASSA ABLOY

www.corbinrusswin.com

SUPERSEDES	T31042-6	DO NOT SCALE DRAWING
TEMPLATE NUMBER	T31042-7	SHEET 2 of 2
		DATE 01-22

Experience a safer and more open world

Copyright © 2008, 2010-2011, 2014, 2022, ASSA ABLOY Access and Egress Hardware Group, Inc. All rights reserved.  
Reproduction in whole or in part without the express written permission of ASSA ABLOY Access and Egress Hardware Group, Inc. is prohibited.