

Notes:

1. Backset is measured from centerline of bevel which is centerpoint of door thickness.
2. (\*) When preparing doors for lead wrapped locks, add 1/8 (3.2) to dimensions marked (\*) to allow proper clearance.
3. 1-1/8 (28.6) strike lip suits frame for 1-3/4 (44.5) thick door, lip will vary for other door thicknesses.
4. Dimensions given in inches and (mm).
5. For open back strike, refer to template T30606.

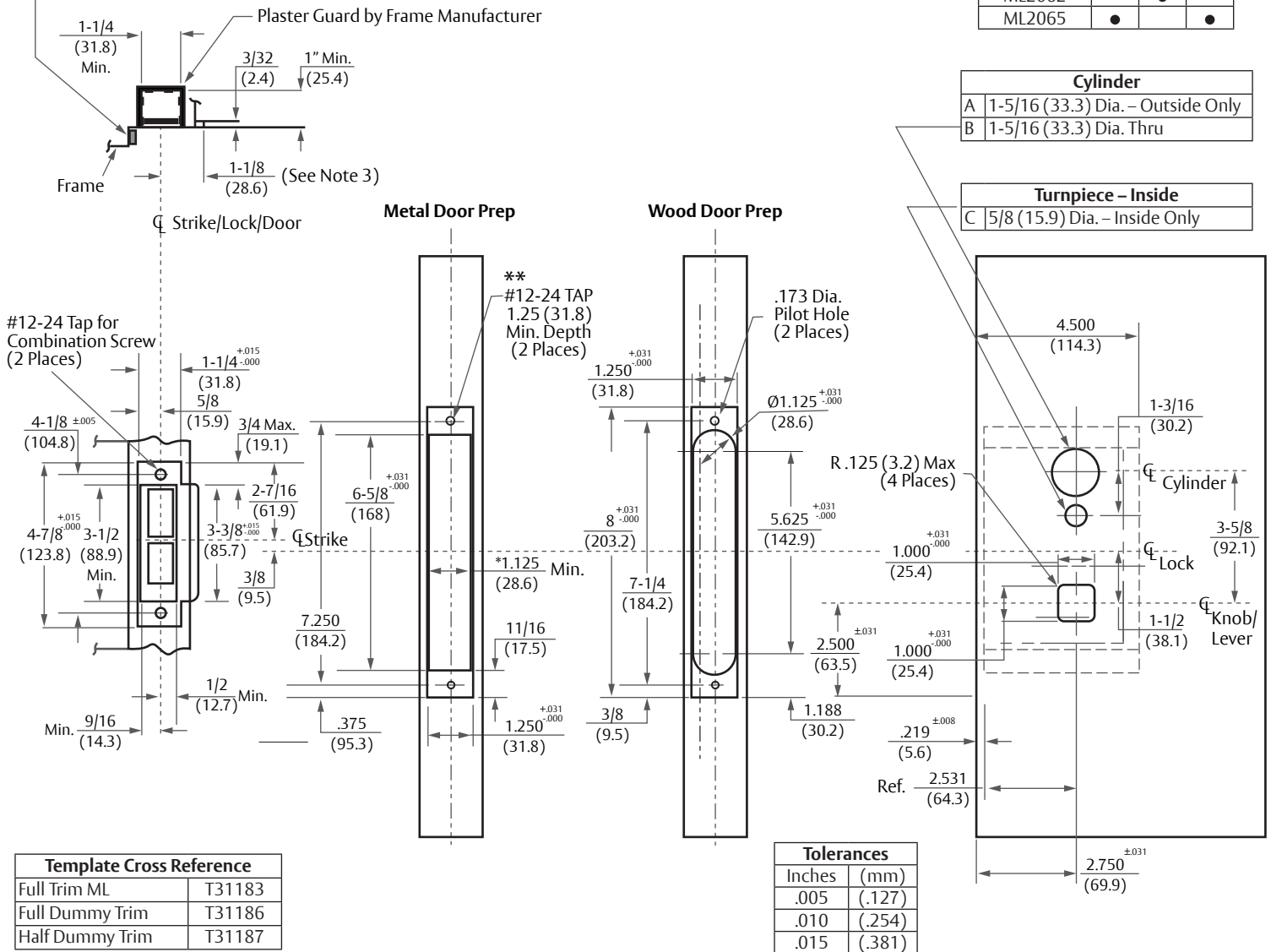
Series Function	Required Holes		
	A	B	C
ML2010			
ML2020			●
ML2022		●	
ML2024	●		●
ML2029	●		●
ML2030			●
ML2032		●	
ML2049	●		●
ML2052		●	
ML2053	●		●
ML2055	●		●
ML2056	●		
ML2057	●		
ML2058	●		●
ML2059	●		
ML2060			●
ML2062		●	
ML2065	●		●

3

Cylinder	
A	1-5/16 (33.3) Dia. - Outside Only
B	1-5/16 (33.3) Dia. Thru

Turnpiece - Inside	
C	5/8 (15.9) Dia. - Inside Only

**CAUTION: DOOR & FRAME MANUFACTURERS**  
When door gasketing or silencers are used, proper allowances must be made for strike location to maintain a common centerline with lock and door as shown so that bolt will freely enter strike.



Template Cross Reference	
Full Trim ML	T31183
Full Dummy Trim	T31186
Half Dummy Trim	T31187

Tolerances	
Inches	(mm)
.005	(.127)
.010	(.254)
.015	(.381)

**RESPONSIBILITY**  
DOOR AND FRAME MANUFACTURERS ARE RESPONSIBLE FOR PROVIDING ADEQUATE CONSTRUCTION OR REINFORCEMENTS FOR PROPER INSTALLATION OF HARDWARE SHOWN. ALL ARCHITECTURAL BUILDERS HARDWARE MUST BE INSTALLED ON PROPERLY REINFORCED DOORS AND FRAMES, REGARDLESS OF TYPE, MATERIAL, OR METHOD OF CONSTRUCTION.

## ML2000 Series by M30 Inspire™ Roseless Half Trim



**ASSA ABLOY**

www.corbinrusswin.com

SUPERSEDES	T31184-3	DO NOT SCALE DRAWING
TEMPLATE NUMBER	T31184-4	SHEET 1 of 1
		DATE 08/22

Experience a safer and more open world

Copyright © 2018-2022, ASSA ABLOY Access and Egress Hardware Group, Inc. All rights reserved. Reproduction in whole or in part without the express written permission of ASSA ABLOY Access and Egress Hardware Group, Inc. is prohibited.