

Notes:

1. Backset is measured from centerline of bevel which is centerpoint of door thickness. Non-beveled door shown.
2. (*) When preparing doors for lead wrapped locks, add 1/8 (3.2) to dimensions marked (*) to allow proper clearance.
3. 1-1/8 (28.6) strike lip suits frame for 1-3/4 (44.5) thick door, lip will vary for other door thicknesses.
4. For open back strike, refer to template T30606.
5. Dimensions given in inches and (mm).

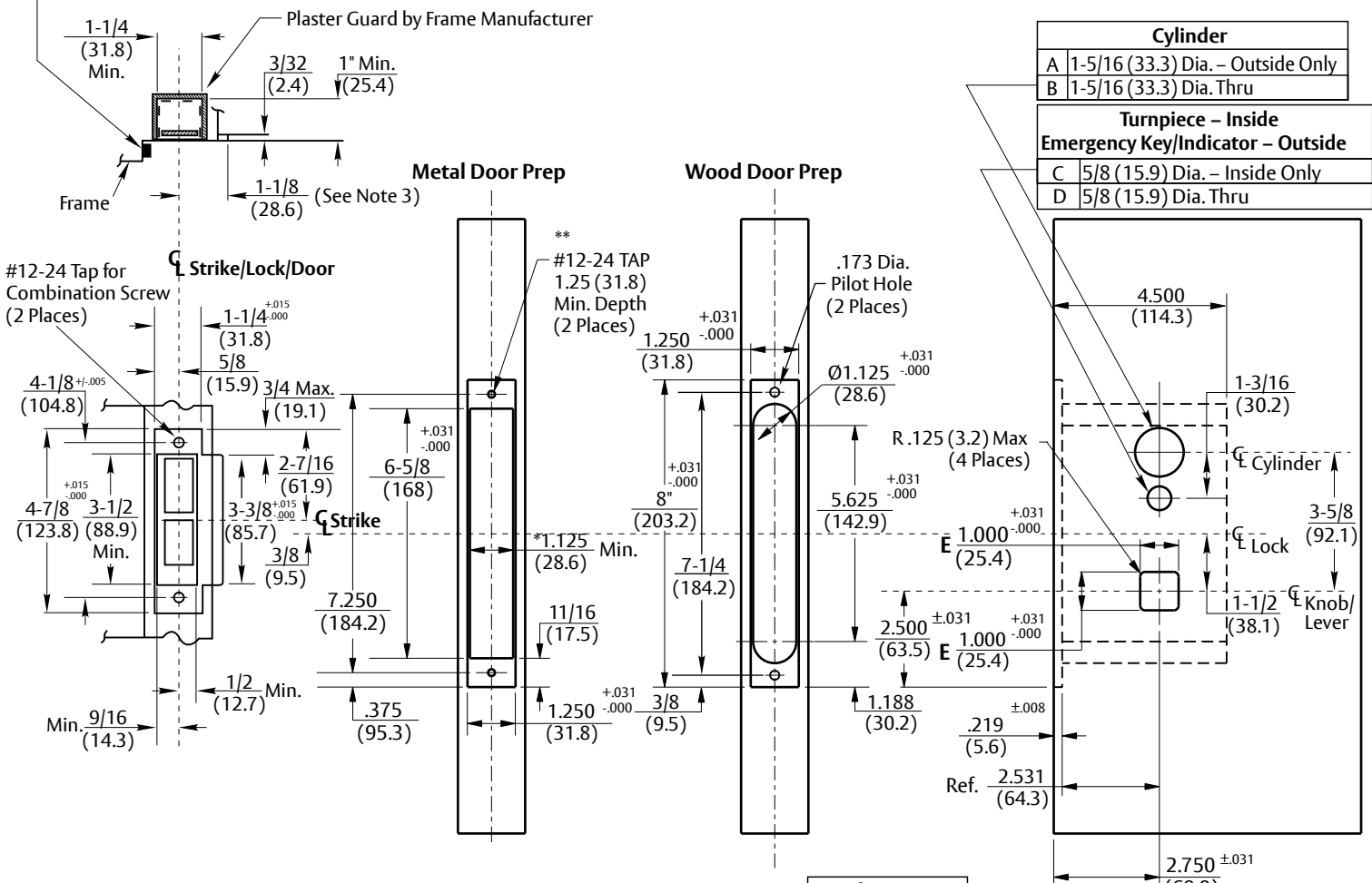
⑥

Function	Required Holes				
	A	B	C	D	E
ML2002		X			X
ML2003	X				X
ML2004	X		X		X
ML2010					X
ML2020				X	X
ML2022		X			X
ML2024	X		X		X
ML2029	X		X		X
ML2030				X	X
ML2032		X			X
ML2042		X			X
ML2048	X		X		X
ML2049	X		X		X
ML2051	X				X
ML2052		X			X
ML2053	X		X		X
ML2054	X		X		X
ML2055	X				X

Function	Required Holes				
	A	B	C	D	E
ML2056	X				X
ML2057	X				X
ML2058	X		X		X
ML2059	X				X
ML2060				X	X
ML2062		X			X
ML2065	X		X		X
ML2067	X		X		X
ML2068	X		X		X
ML2069	X		X		X
ML2072		X			X
ML2073	X				X
ML2075	X		X		X
ML2080					T
ML2082		X			X
ML2087		X			X
ML2090					X
ML2092		X			X

T = CUT HOLE ON TRIM SIDE OF DOOR ONLY

CAUTION: DOOR & FRAME MANUFACTURERS
When door gasketing or silencers are used, proper allowances must be made for strike location to maintain a common centerline with lock and door as shown so that bolt will freely enter strike.



Template Cross Reference	
Half Trim ML	T31184
Full Dummy Trim	T31186
Half Dummy Trim	T31187

Tolerances	
Inches	(mm)
.005	(.127)
.010	(.254)
.015	(.381)

RESPONSIBILITY
DOOR AND FRAME MANUFACTURERS ARE RESPONSIBLE FOR PROVIDING ADEQUATE CONSTRUCTION OR REINFORCEMENTS FOR PROPER INSTALLATION OF HARDWARE SHOWN. ALL ARCHITECTURAL BUILDERS HARDWARE MUST BE INSTALLED ON PROPERLY REINFORCED DOORS AND FRAMES, REGARDLESS OF TYPE, MATERIAL, OR METHOD OF CONSTRUCTION.

**ML200 Series
Inspire™ Roseless Trim**



www.corbinrusswin.com

SUPERSEDES	T31183-5	DO NOT SCALE DRAWING
TEMPLATE NUMBER	T31183-6	SHEET 1 of 1 DATE 03/23

Experience a safer and more open world

Copyright © 2018, 2023 ASSA ABLOY Access and Egress Hardware Group, Inc. All rights reserved. Reproduction in whole or in part without the express written permission of ASSA ABLOY Access and Egress Hardware Group, Inc. is prohibited.