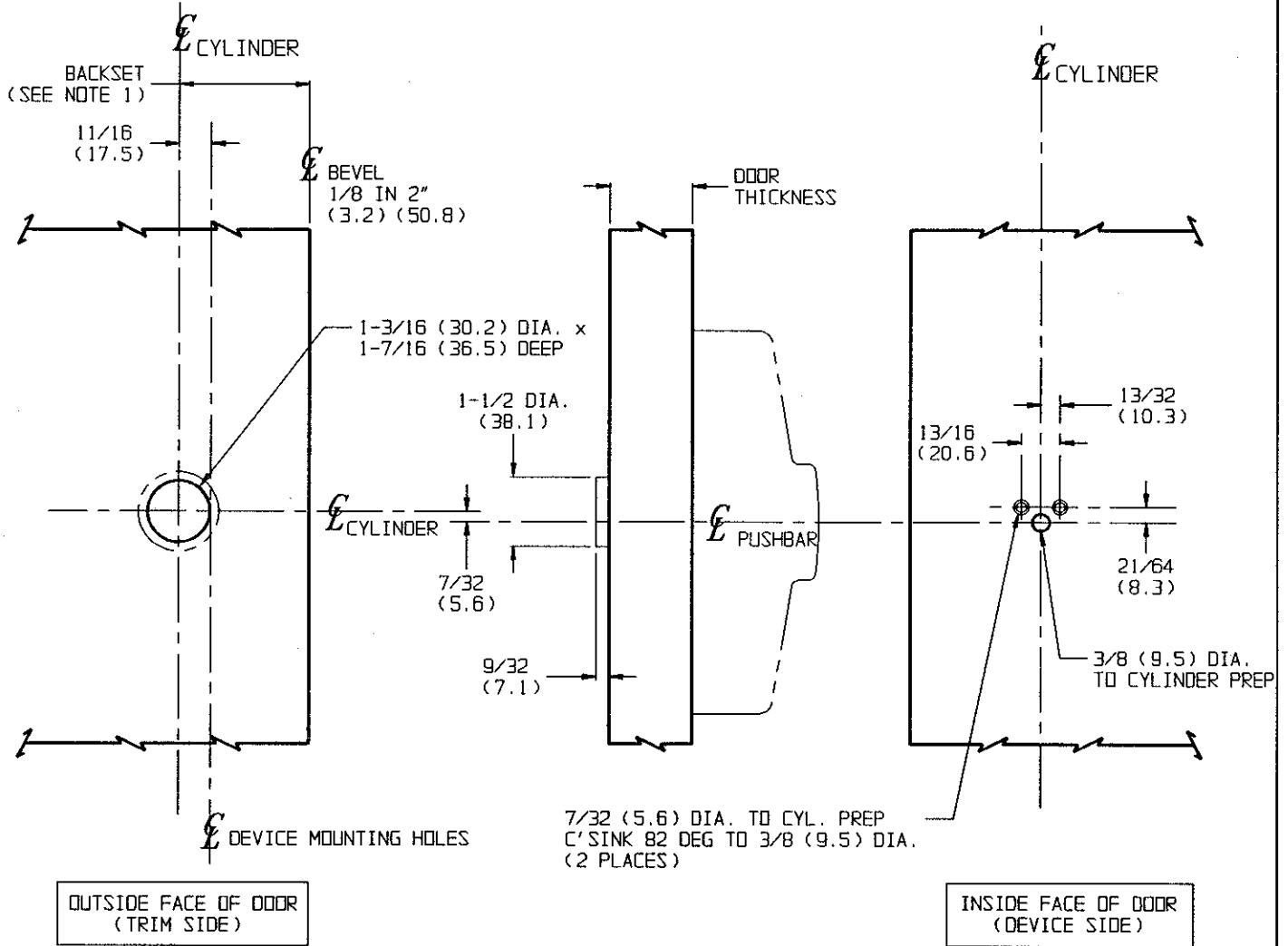


NOTES:

1. BACKSET IS MEASURED FROM CENTERLINE OF BEVEL WHICH IS CENTERPOINT OF DOOR THICKNESS. REFER TO APPROPRIATE DEVICE TEMPLATE FOR BACKSET DIMENSION.
2. DIMENSIONS GIVEN IN INCHES AND (MM).
3. SUITABLE REINFORCEMENTS/BLOCKING ARE REQUIRED TO SUPPORT EXIT DEVICE AND CYLINDER TRIM FOR WOOD AND COMPOSITE DOOR APPLICATIONS. INSIDE OF METAL DOOR FACE MUST BE REINFORCED WHEN DOOR SKIN THICKNESS IS LESS THAN .090 (2.3).
4. PREP SHOWN APPLIES TO CORBIN RUSSWIN K157 RIM CYLINDER TRIM ONLY. FOR RIM CYLINDERS BY OTHER MANUFACTURERS, USE SCREWS AND TEMPLATING BY OTHER MANUFACTURERS.

LHR SHOWN  
RHR OPPOSITE

**CAUTION:** CYLINDER MOUNTING SCREWS SHOULD FIT WITHOUT PROJECTING FROM INSIDE DOOR FACE. CHECK PREP FEASIBILITY BEFORE DRILLING DOOR.



**K157 Trim**  
**With ED5200, ED5400 or ED5800 Series**  
**Rim and Vertical Rod Exit Devices**  
**Metal, Wood or Composite Door Preparation**

**Corbin Russwin**  
[www.corbinrusswin.com](http://www.corbinrusswin.com)

|                 |          |                      |
|-----------------|----------|----------------------|
| SUPERSEDES      | T30886   | Do Not Scale Drawing |
| Template Number | T30886-1 | Date 9/99            |