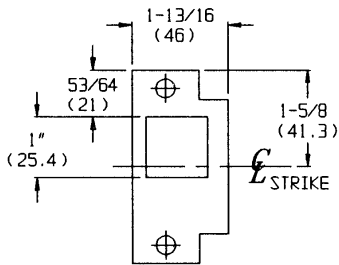


- NOTES:
1. DIMENSIONS GIVEN IN INCHES AND (MM).
 2. 1-13/16" STRIKE LIP SUITS FRAME FOR 1-3/4" THICK DOOR.
 3. EXTENDED LIP ESCUTCHEON UNIT LOCKS ARE AVAILABLE FOR REVERSE BEVEL, SINGLE DOORS ONLY.

TEMPLATE CROSS REFERENCE

DESCRIPTION	TEMPLATE
UT5200 SERIES UNIT LOCK	T30495
UT5200 SERIES x M11 (ANSI STRIKE)	T30638

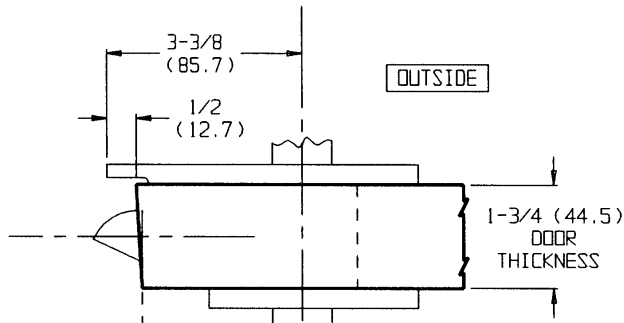
LHR SHOWN
RHR OPPOSITE



STRIKE DETAIL

CAUTION: DOOR AND FRAME MANUFACTURERS

WHEN DOOR GASKETING OR SILENCERS ARE USED, PROPER ALLOWANCES MUST BE MADE FOR STRIKE LOCATION TO MAINTAIN A COMMON CENTERLINE WITH LOCK AND DOOR AS SHOWN SO THAT BOLT WILL FREELY ENTER STRIKE.



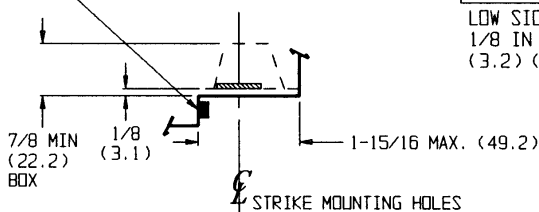
OUTSIDE

1-3/4 (44.5)
DOOR
THICKNESS

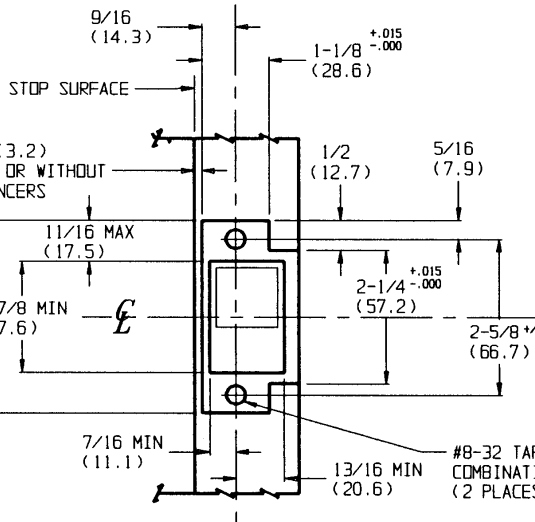
INSIDE

CAUTION:

LOW SIDE OF BEVEL
1/8 IN 2"
(3.2) (50.8)

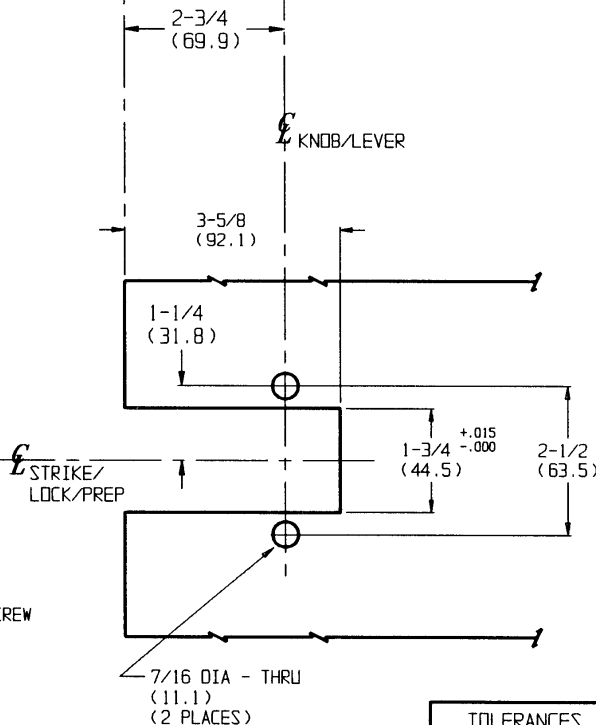


STRIKE MOUNTING HOLES



FRAME DETAIL

STRIKE 293L14



KNOB/LEVER

STRIKE/
LOCK/PREP

DOOR DETAIL

TOLERANCES	
INCHES	(MM)
.005	(.127)
.015	(.381)

RESPONSIBILITY

Door and Frame Manufacturers are responsible for providing adequate construction or reinforcements for proper installation of hardware shown. All architectural builders hardware must be installed on properly reinforced doors and frames, regardless of the type, material, or method of construction.

UT5200 SERIES BY M11

UNIT LOCK
EXTENDED LIP ESCUTCHEON
OPTIONAL BOX STRIKE



DO NOT SCALE DRAWING

SUPERSEDES	23201C/W25716	DR.	KJ
DATE	5/24/93	TEMPLATE NUMBER	T30539