

Notes:

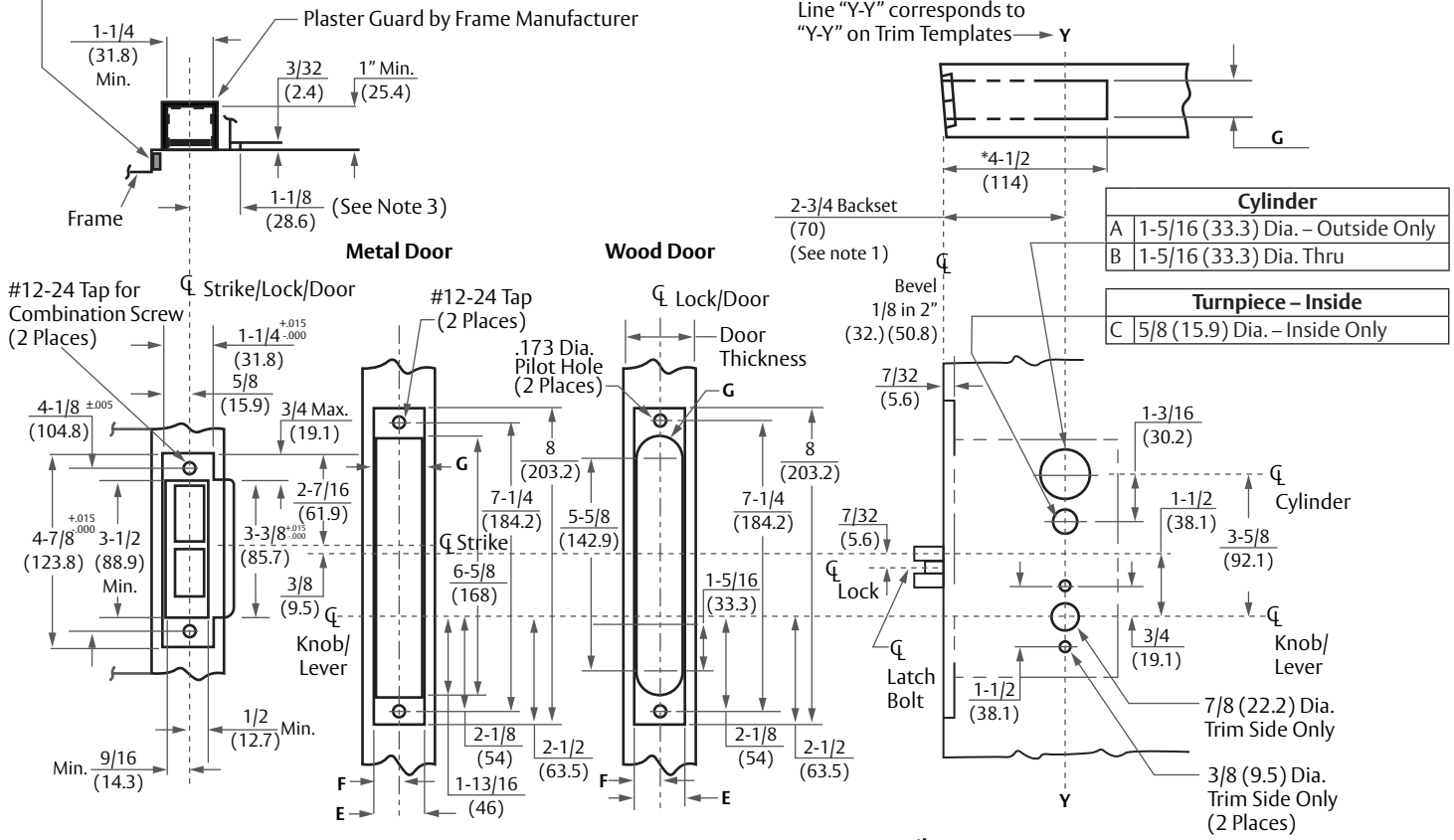
1. Backset is measured from centerline of bevel which is centerpoint of door thickness.
2. (\*) When preparing doors for lead wrapped locks, add 1/8 (3.2) to dimensions marked (\*) to allow proper clearance.
3. 1-1/8 (28.6) strike lip suits frame for 1-3/4 (44.5) thick door, lip will vary for other door thicknesses.
4. For preparation of trim, refer to separate template.
5. Dimensions given in inches and (mm).
6. For open back strike, refer to template T30606.

Series Function	Required Holes		
	A	B	C
ML 2010			
ML 2020		●	
ML 2022		●	
ML 2024	●		●
ML 2029	●		●
ML 2030			●
ML 2032		●	
ML 2049	●		●
ML 2052		●	
ML 2053	●		●
ML 2055	●		
ML 2056	●		
ML 2057	●		
ML 2058	●		●
ML 2059	●		
ML 2062		●	
ML 2065	●		●

A=	CYL O/S
B=	CYL BOTH SIDES
C=	TP I/S

⑦

**CAUTION: DOOR & FRAME MANUFACTURERS**  
When door gasketing or silencers are used, proper allowances must be made for strike location to maintain a common centerline with lock and door as shown so that bolt will freely enter strike.



FRAME DETAIL	
ANSI Strike	Description
236L72	Latch & Dead Bolt Holes
236L73	Latch Bolt Hole Only
236L74	Dead Bolt Hole Only
And Optional Box 120F76	

E	F	G	Door Thickness
1-1/4 (31.8)	5/8 (15.9)	1-1/16 (27)	1-3/4 (44.5) or Over (Std)
1-1/16 (27)	17/32 (13.5)	1-1/32 (26.2)	1-3/8 (34.9) (D138)

Tolerances	
Inches	(mm)
.005	(.127)
.015	(.381)

**RESPONSIBILITY**  
DOOR AND FRAME MANUFACTURERS ARE RESPONSIBLE FOR PROVIDING ADEQUATE CONSTRUCTION OR REINFORCEMENTS FOR PROPER INSTALLATION OF HARDWARE SHOWN. ALL ARCHITECTURAL BUILDERS HARDWARE MUST BE INSTALLED ON PROPERLY REINFORCED DOORS AND FRAMES, REGARDLESS OF TYPE, MATERIAL, OR METHOD OF CONSTRUCTION.

**ML2000 Series by M30**  
Mortise Lock by Half Trim



SUPERSEDES T30607-7		DO NOT SCALE DRAWING	
TEMPLATE NUMBER T30607-8	SHEET 1 of 1	DATE 08/22	

Experience a safer and more open world

Copyright © 2022, ASSA ABLOY Access and Egress Hardware Group, Inc. All rights reserved. Reproduction in whole or in part without the express written permission of ASSA ABLOY Access and Egress Hardware Group, Inc. is prohibited.