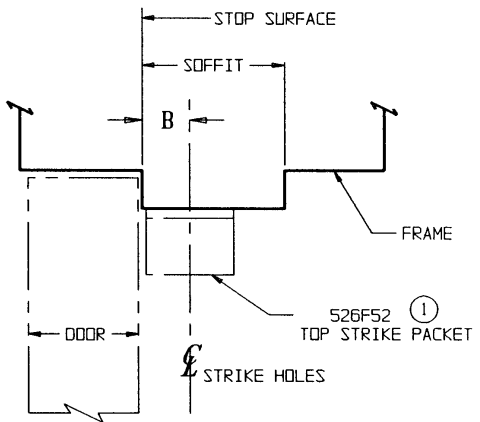
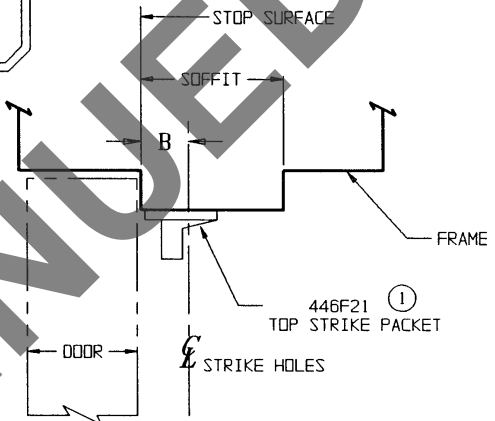
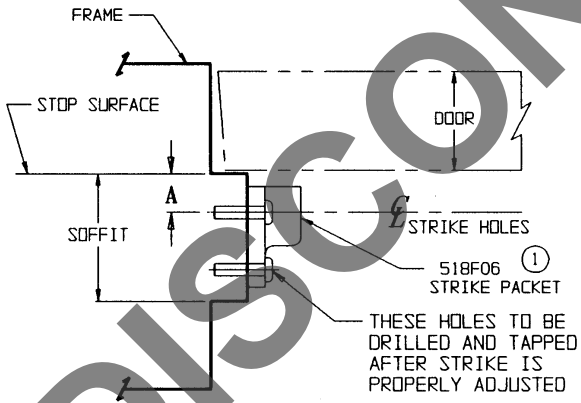
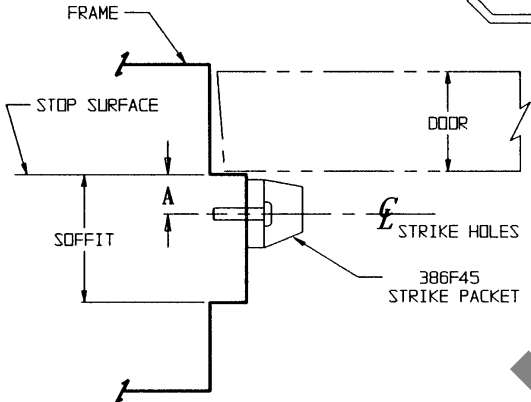


**NOTES:**

- THIS TEMPLATE INDICATES THE LOCATIONS FOR MOUNTING STRIKES WHEN GLASS BEAD SHIMS ARE USED TO RAISE EXIT DEVICES AND VERTICAL ROD LATCHES OFF THE SURFACE OF DOORS.
- REFER TO APPROPRIATE DEVICE TEMPLATE FOR ALL OTHER MOUNTING DIMENSIONS.
- DIMENSIONS GIVEN IN INCHES AND (MM).

TEMPLATE CROSS REFERENCE		
DEVICE	DESCRIPTION	TEMPLATE
RIM	ED8200 & ED8200B SERIES	T30436
	ED9200A SERIES	T30465
	ED9200 & ED9200B SERIES	T30441
	ED9200 & ED9200B SERIES x M61 & M62	T30490
	ED9200A SERIES	T30462
VERTICAL ROD	ED8400 SERIES	T30437
	ED8400A SERIES	T30467
	ED9400 SERIES	T30431
	ED9400A SERIES	T30443

LHR SHOWN  
RHR OPPOSITE



RIM EXIT DEVICES			
SHIMS APPLIED	A	MINIMUM SOFFIT REQUIRED	
		386F45 STRIKE	518F06 STRIKE
NONE	11/16 (17.5)	1-3/8 (34.9)	2" (50.8)
1	13/16 (20.6)	1-1/2 (38.1)	2-1/8 (54)
2	15/16 (23.8)	1-5/8 (41.3)	2-1/4 (57.2)
3	1-1/16 (27)	1-3/4 (44.5)	2-3/8 (60.3)

VERTICAL ROD EXIT DEVICES			
SHIMS APPLIED	B	MINIMUM SOFFIT REQUIRED	
		352F05 STRIKE	526F52 STRIKE
NONE	3/4 (19.1)	1-5/16 (33.3)	1-5/8 (41.3)
1	7/8 (22.2)	1-7/16 (36.5)	1-3/4 (44.5)
2	1" (25.4)	1-9/16 (39.7)	1-7/8 (47.6)
3	1-1/8 (28.6)	1-11/16 (42.9)	2" (50.8)

**RESPONSIBILITY**  
 Door and Frame Manufacturers are responsible for providing adequate construction or reinforcements for proper installation of hardware shown. All architectural builders hardware must be installed on properly reinforced doors and frames, regardless of the type, material, or method of construction.

**M58  
GLASS BEAD SHIM KIT**  
  
 PUSHBAR RIM AND VERTICAL ROD EXIT DEVICES

**Corbin Russwin**  
 www.corbinrusswin.com  
 DO NOT SCALE DRAWING

SUPPERSEDES	T 30494	DR.	BTH	AP
DATE	04/05/93	TEMPLATE NUMBER	T 30494 - 1	