

### MOUNTING INFORMATION

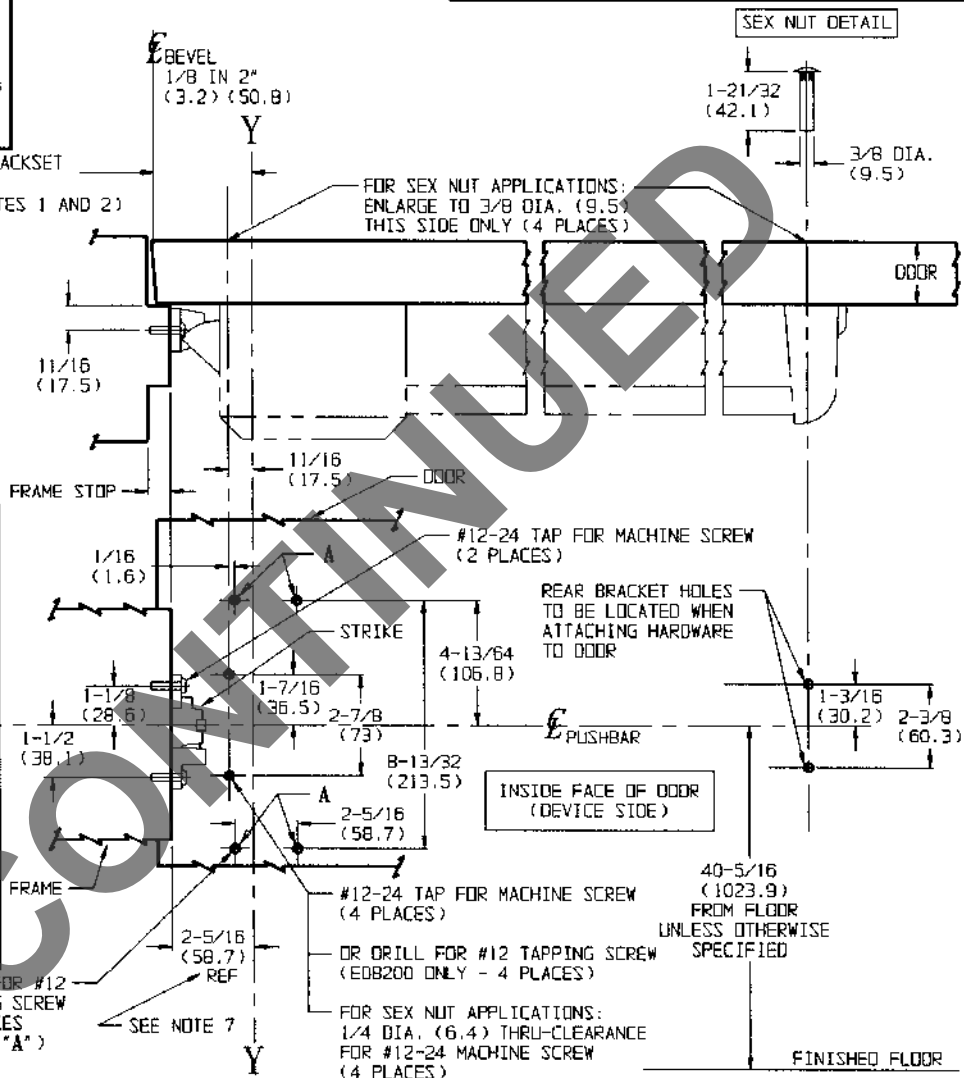
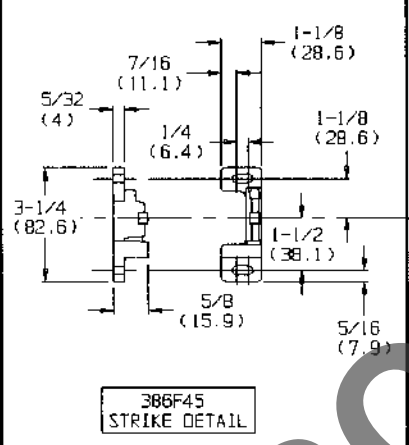
- **For Non-Fire Rated Exit Devices:**  
Sex nuts or through bolts are **recommended** for wood core, wood and plastic covered composite doors and any type of door without reinforcements.
- **For Fire Rated Exit Devices:**  
Sex nuts or through bolts are **required** for wood core, wood and plastic covered composite doors and any type of door without reinforcements.

## SINGLE DOOR APPLICATIONS ONLY

### TEMPLATE CROSS REFERENCE (FOR DOUBLE DOOR APPLICATIONS)

DESCRIPTION	TEMPLATE
508 MULLION	T30427
510 MULLION	T30533
708A (KM) Mullion	T30940
707A (KM), 708A (KM), 710 (KM) Mullion	T30942

LHR SHOWN  
RHR OPPOSITE



**NOTES:**

- BACKSET IS MEASURED FROM CENTERLINE OF BEVEL WHICH IS CENTERPOINT OF DOOR THICKNESS.
- CAUTION:** THIS TEMPLATE IS FOR SINGLE DOOR APPLICATIONS ONLY. REFER TO APPROPRIATE MULLION TEMPLATE FOR DOUBLE DOOR APPLICATIONS. NOTE THAT THE BACKSET DIMENSION FOR SINGLE DOORS DIFFERS FROM THE BACKSET FOR DOUBLE DOORS.
- GLASS BEAD SHIMS ARE NOT INTENDED FOR USE WITH ED8200 AND ED8200B RIM ALARM EXIT DEVICES.
- FOR PREPARATION OF TRIM, REFER TO SEPARATE TEMPLATE.
- RECOMMENDED MINIMUM STILE 5" (127).
- DIMENSIONS GIVEN IN INCHES AND (MM).
- THIS REFERENCE DIMENSION APPLIES TO A SINGLE DOOR PREPPED TO A 2-3/4" (69.9) BACKSET WITH A 5/8" (15.9) FRAME STOP AND 1/8" (3.2) DOOR GAP. WHEN PREPPED DOOR IS MOUNTED IN A FRAME WITH A 1/2" (12.7) STOP, USE 1/8" (3.2) SHIM UNDER STRIKE TO MAINTAIN PROPER LATCH ENGAGEMENT.

**ED8200 & ED8200B Series  
Rim Panic & Fire Exit Devices  
Application to Metal or Wood / Composite Doors  
With M61 or M62 Alarm Option**



SUPERSEDES	T30491-1	Do Not Scale Drawing
Template Number	T30491-2	Date
		9/99