

Notes:

- Backset is measured from centerline of bevel which is centerpoint of door thickness.
- (*) When preparing doors for lead wrapped locks, add 1/8 (3.2) to dimensions marked (*) to allow proper clearance.
- 1-1/8 (28.6) strike lip suits frame for 1-3/4 (44.5) thick door, lip will vary for other door thicknesses.
- For preparation of trim, refer to separate template.
- For open back strike, refer to template T30606.
- Dimensions given in inches and (mm).

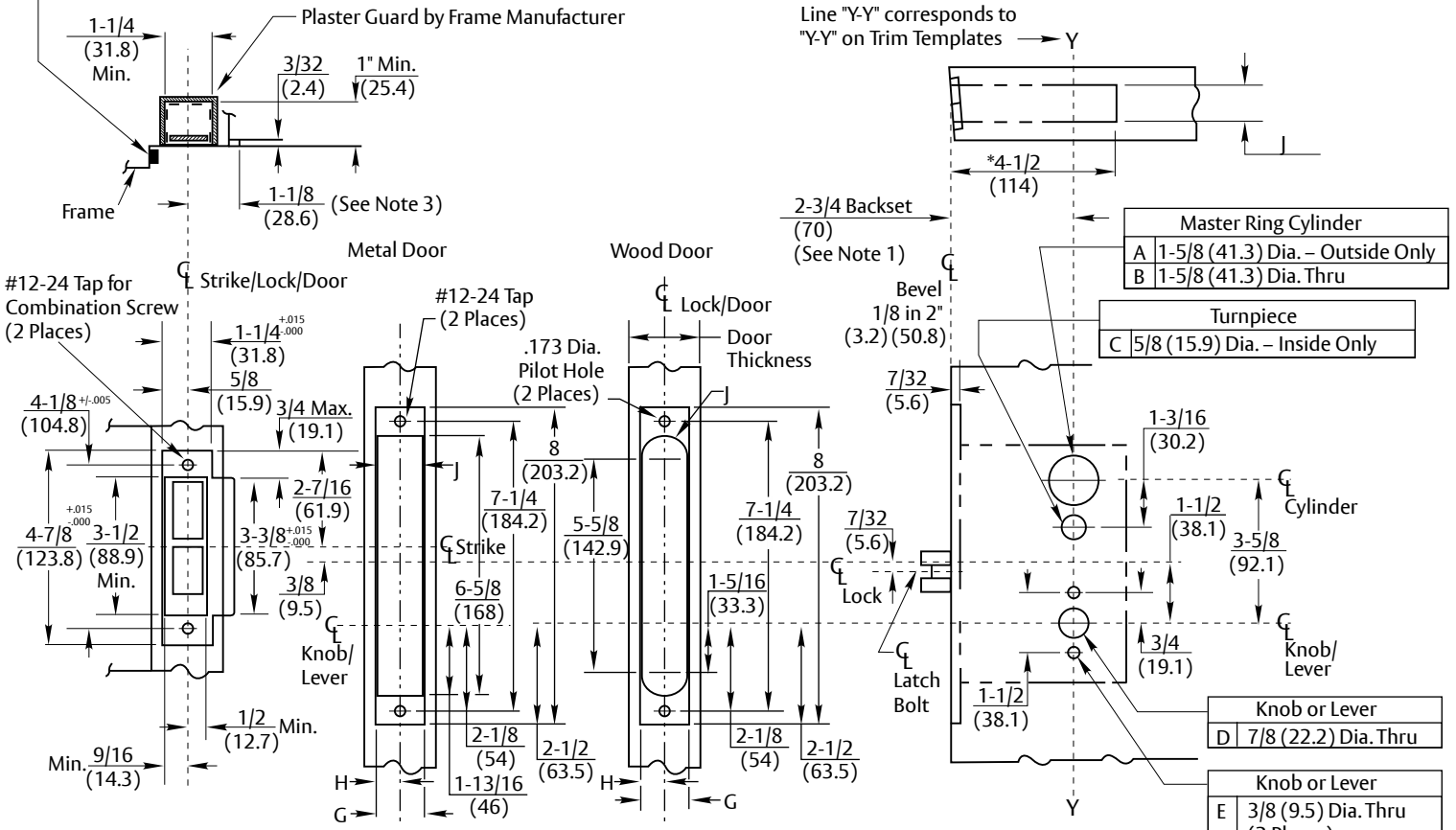
A =	CYL O/S
B =	CYL BOTH SIDES
C =	TP I/S
D =	LEV HOLE
E =	THRU-BOLT HOLE'S

G =	Front Pocket Width
H =	Front Pocket Halt Width
J =	Mortise Pocket Width

Function	Required Holes				
	A	B	C	D	E
ML2002		X		X	X
ML2003	X			X	X
ML2004	X		X	X	X
ML2011	X				
ML2012		X			
ML2013	X		X		
ML2022		X		X	X
ML2024	X		X	X	X
ML2042		X		X	X
ML2048	X		X	X	X
ML2049	X		X	X	X
ML2051	X			X	X
ML2052		X		X	X
ML2053	X		X	X	X
ML2054	X		X	X	X
ML2055	X			X	X

Function	Required Holes				
	A	B	C	D	E
ML2056	X			X	X
ML2057	X			X	X
ML2058	X		X	X	X
ML2059	X			X	X
ML2062		X		X	X
ML2065	X		X	X	X
ML2067	X		X	X	X
ML2068	X		X	X	X
ML2069	X		X	X	X
ML2072		X		X	X
ML2073	X			X	X
ML2075	X		X	X	X
ML2082		X		X	X
ML2087		X		X	X
ML2092		X		X	X

CAUTION: DOOR & FRAME MANUFACTURERS
When door gasketing or silencers are used, proper allowances must be made for strike location to maintain a common centerline with lock and door as shown so that bolt will freely enter strike.



FRAME DETAIL	
ANSI Strike	Description
236L72	Latch & Dead Bolt Holes
236L73	Latch Bolt Hole Only
236L74	Dead Bolt Hole Only
And Optional Box 120F76	

G	H	J	Door Thickness
1-1/4 (31.8)	5/8 (15.9)	1-1/16 (27)	1-3/4 (44.5) or Over (STD)
1-1/16 (27)	17/32 (13.5)	1-1/32 (26.2)	1-3/8 (34.9) (D138)

Tolerances	
Inches	(mm)
.005	(.127)
.015	(.381)

RESPONSIBILITY
DOOR AND FRAME MANUFACTURERS ARE RESPONSIBLE FOR PROVIDING ADEQUATE CONSTRUCTION OR REINFORCEMENTS FOR PROPER INSTALLATION OF HARDWARE SHOWN. ALL ARCHITECTURAL BUILDERS HARDWARE MUST BE INSTALLED ON PROPERLY REINFORCED DOORS AND FRAMES, REGARDLESS OF TYPE, MATERIAL, OR METHOD OF CONSTRUCTION.

ML2000
Series by MR
Mortise Lock by
Master Ring Cylinder

Corbin Russwin
ASSA ABLOY
www.corbinrusswin.com

SUPERSEDES	T30605-6	DO NOT SCALE DRAWING
TEMPLATE NUMBER	T30605-7	SHEET 1 of 1
		DATE 03/23

Experience a safer and more open world

Copyright © 2018, 2023 ASSA ABLOY Access and Egress Hardware Group, Inc. All rights reserved. Reproduction in whole or in part without the express written permission of ASSA ABLOY Access and Egress Hardware Group, Inc. is prohibited.