

MP9800 Series

Hollow Metal & Aluminum Doors

Multi-Point Lock



WARNING

This product can expose you to lead which is known to the state of California to cause cancer and birth defects or other reproductive harm. For more information go to www.P65warnings.ca.gov.

TOC	Table of Contents
1	General Description2
2	Door Preparation.....3
3	MP9800 Installation Instructions4
4	M55 Series Installation Instructions6
5	Classroom Intruder (*52) Function Series8

1 General Description

The MP9800 Series Multi-Point Lock is ideal for security applications and joins the Corbin Russwin line of multi-point door security solutions. Eliminating the need for automatic flushbolts and coordinators, the MP9800 Series provides flexibility, simplicity, strength, durability, aesthetics and innovation and is perfect for a wide variety of applications including conference rooms, commercial office buildings, convention centers, upscale condominiums and residential applications, medical and educational institutions where exit devices are not required.

MP9800 Series Vertical Rod locks are available for aluminum, wood and metal doors. Single point top latching can also be specified, eliminating the bottom strike and the additional installation work required with a bottom bolt. The single point lock is specified with the M55- option. Rods are retracted by dual mounted controls with a variety of functions available.

The MP9800 Series is available for fire rated openings for wood or metal doors. Thermal pin requirements for fire rated doors:

- Double doors with two point latching on each do not require thermal pins.
- Double doors with single point latching (M55-) on each require a total of 2 thermal pins, one thermal pin (supplied) for each lock.

See the Corbin Russwin MP9800 Series Catalog for more information, call 1-800-438-1951, or visit www.corbinrusswin.com.



WARNING:

Changes or modifications to this unit could void the user’s authority to operate the equipment.

Important: Any retrofit or other field modification to a fire rated opening can potentially impact the fire rating of the opening, and Corbin Russwin Inc. makes no representations or warranties concerning what such impact may be in any specific situation. When retrofitting any portion of an existing fire rated opening, or specifying and installing a new fire-rated opening, please consult with a code specialist or local code official (authority having jurisdiction) to ensure compliance with all applicable codes and ratings.

Tools Required (Same for all series products):

Phillips screw driver, Slotted screw driver, Drill with bits, #8-32 tap and drill

2

Door Preparation MP9800 and M55 Series

Note:

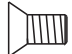
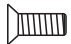
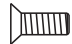




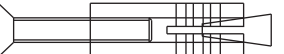
For Auxilliary Controls, prep the door BEFORE installing the lock. Install Aux Control AFTER installing the lock. For Aux Controls, see template T31240 and installation instructions FM439.

1. Verify Hand and Bevel of the Door. (See Figure 1)
 - Check hand of door. The Multi-Point lock may be handed.
 - Door should be fitted and hung.
 - Verify box label for size of the Multi-Point lock, function and hand.
 - Change handing if necessary.

2. Door Preparation

If the door is not pre-drilled, prepare the door according to template T31242. Refer to templates at www.corbinrusswin.com.

3. Hardware Supplied:

 DD Bottom case mounting screw (1/4"-20 x 1/2" Phillips flat head machine screw 2 pcs) [not used with nb prefix]	 GG (2) Inner chassis screws & (2) top strike screws (# 10-24 x 1/2" Phillips flat head machine screws, 4 pcs)
 GG (2) Inner chassis screws & (2) top strike screws (# 10-24 x 1/2" Phillips flat head machine screws, 4 pcs)	 HH Top case mounting screw (#10-24 x 3/8" Phillips oval head machine screw 2 pcs)
 HH Top case mounting screw (#10-24 x 3/8" Phillips oval head machine screw 2 pcs)	 ET Mounting Screw (1/4"-20 x 3" Phillips oval head mach. screw 2 pcs)
 ET Mounting Screw (1/4"-20 x 3" Phillips oval head mach. screw 2 pcs)	
 ET Bottom strike mounting screw (2) 1/4-20 x 2 Phillips head machine screws and (2) anchor nuts	

MP9800

M55

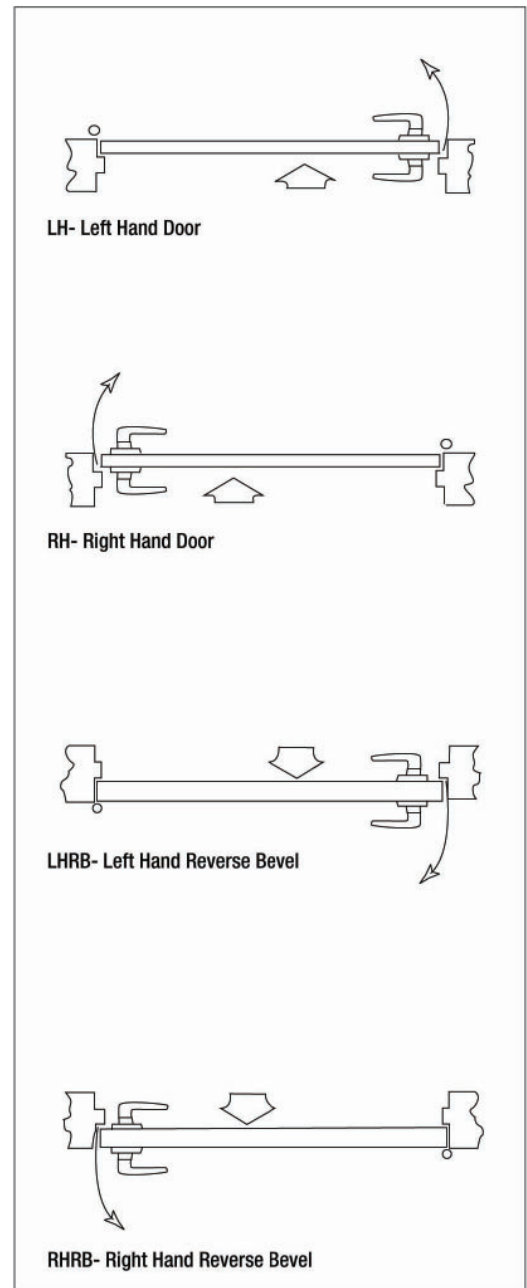


Figure 1

3

MP9800 Series Installation Instructions

1. Measure gap between the top of the door/frame and bottom of the door and floor before removing the door from the hinges (See Steps 6 and 7)

Note:

For Auxilliary Controls, prep the door BEFORE installing the lock. Install Aux Control AFTER installing the lock. For Aux Controls, see template T31240 and installation instructions FM439.

2. Screw top bolt & rod assembly (A) and bottom bolt and rod assembly (D) into inner chassis.
3. Slide complete assembly into top of door.
4. Attach inner chassis (B) to door with (2) screws (GG).
5. Attach inside and outside lever trims, using mounting screws. Insert spindle through 1-1/4" thru hole. Spindle cams must be UNDER inner chassis platform (C).
6. Adjust TOP BOLT and ROD assembly (A) with the inside lever rotated in a down position.

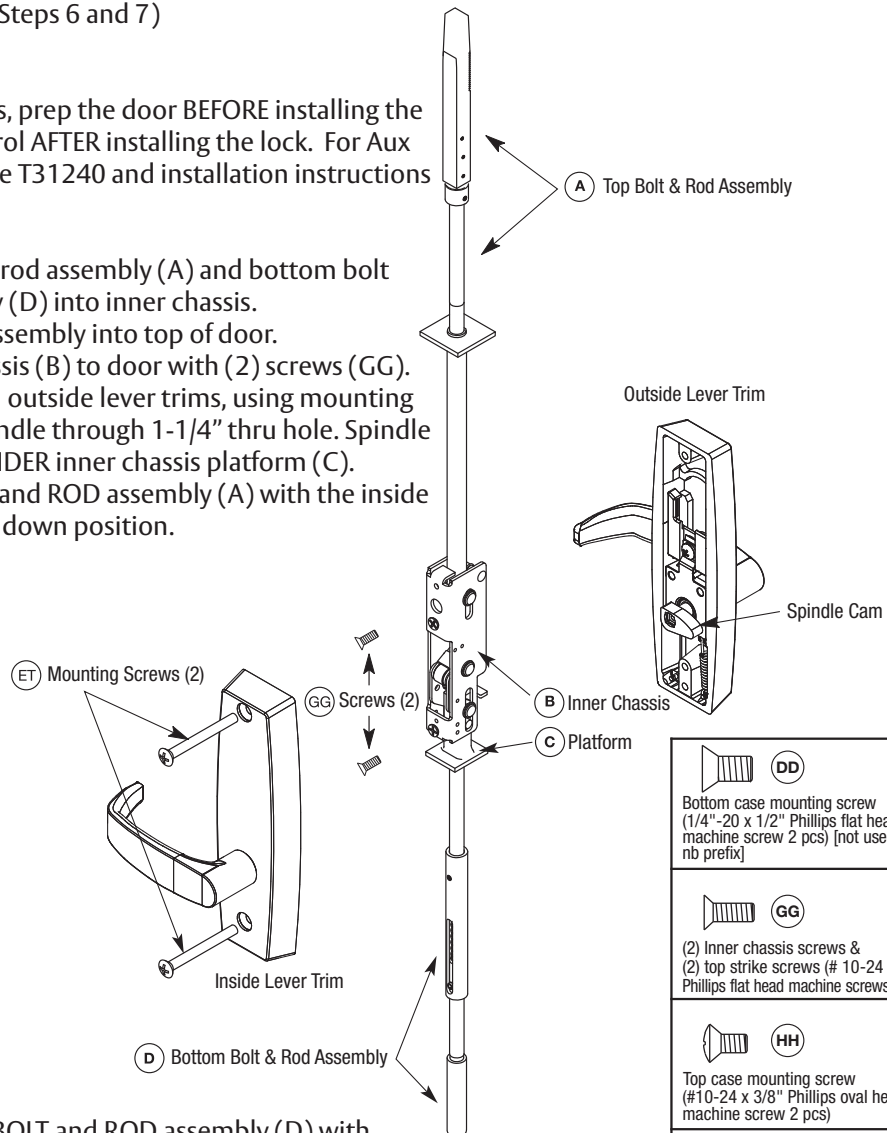
For 1/8" GAP or LESS between the top of the door and the door frame, rotate the bolt even with the top door.

For 1/8" GAP or GREATER between the top of the door and the door frame, rotate the bolt to gap minus 1/8" above the door.

7. Adjust BOTTOM BOLT and ROD assembly (D) with the inside lever rotated in a down position.

For 1/8" GAP or LESS between the door bottom and the high point of the floor, rotate the bolt to make even with the bottom of the door.

For 1/8" GAP or GREATER between the door bottom and the high point of the floor, rotate the bolt to gap minus 1/8" below the door.



	DD
Bottom case mounting screw (1/4"-20 x 1/2" Phillips flat head machine screw 2 pcs) [not used with nb prefix]	
	GG
(2) Inner chassis screws & (2) top strike screws (# 10-24 x 1/2" Phillips flat head machine screws, 4 pcs)	
	HH
Top case mounting screw (#10-24 x 3/8" Phillips oval head machine screw 2 pcs)	
	ET
Mounting Screw (1/4"-20 x 3" Phillips oval head mach. screw 2 pcs)	
Bottom strike mounting screw (2) 1/4-20 x 2 Phillips head machine screws and (2) anchor nuts	

3

MP9800 Series Installation Instructions, continued

8. Slide rod silencer (G) over top bolt (F) onto rod.

NOTE: The teeth on the rod should face the teeth on the top case.

9. SLIDE TOP case (E) over top bolt (F). Secure with (2) screws (HH).

10A. Bottom Bolt for Aluminum Door:

Install bottom plate (M) over the bottom bolt (L) and secure with two #10-24 x 3/8" oval head screws (DD) using holes (6A)

#10-24 x 3/8" Oval Head Screws

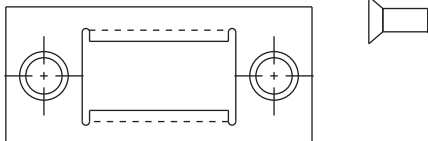
10B. Standard MP9800(B0 Bottom Bolt):

Install bottom plate (M) over the bottom bolt (L) and secure with two 1/4-20 x 1/2" flat head screws (DD) using tapped holes (7A)

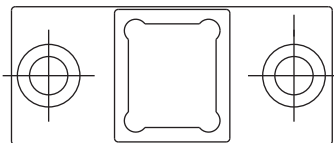
1/4-20 x 1/2" flat head screw

11. Install door into the frame using hinges.

12. 764F577 Top Strike. ATTACH Top Strike to door frame, (2) #10-24 x 1/2" flat head screws (References template T31241).



13. 764F587 Bottom Strike. ATTACH Bottom Strike to floor under the bottom bolt, (2) 1/4" -20 x 2 Phillips head machine screws and (2) anchor nuts (References template T31241).



14. BEFORE CLOSING DOOR adjust bolts per steps 6 & 7 as needed:

- Either lever retracts both bolts.
- Bolts stay retracted (hold back).
- Bolts release when door closes; button inside top of door hits frame.
- Bolts engage strikes, 1/4" - 5/16".

4

M55 Series Installation Instructions (Less Bottom Rod)

1. Measure gap between the top of the door/frame and bottom of the door and floor before removing the door from the hinges (See Steps 6 and 7)

Note:

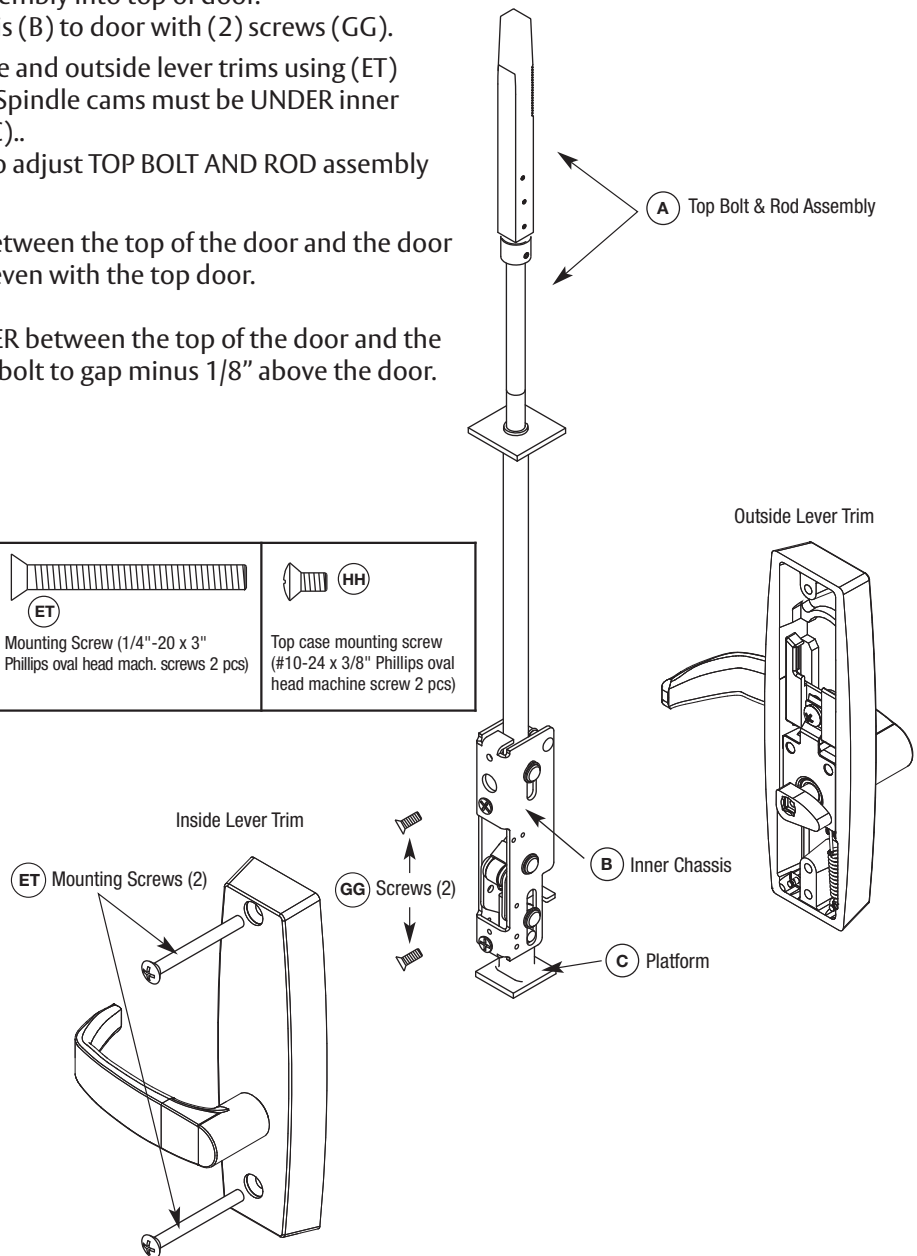
For Auxilliary Controls, prep the door BEFORE installing the lock. Install Aux Control AFTER installing the lock. For Aux Controls, see template T31240 and installation instructions FM439.

2. Screw top bolt & rod assembly (A) into inner chassis (B).
3. Slide complete assembly into top of door.
4. Attach inner chassis (B) to door with (2) screws (GG).
5. Through bolt inside and outside lever trims using (ET) mounting screws. Spindle cams must be UNDER inner chassis platform (C)..
6. USE INSIDE TRIM TO adjust TOP BOLT AND ROD assembly (A).

For 1/8" GAP or LESS between the top of the door and the door frame, rotate the bolt even with the top door.

For 1/8" GAP or GREATER between the top of the door and the door frame, rotate the bolt to gap minus 1/8" above the door.

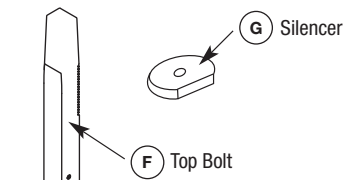
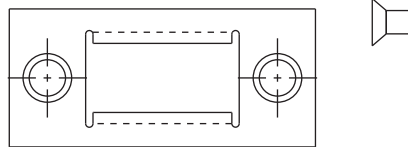
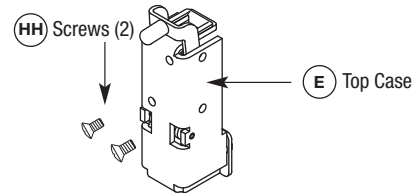
GG	ET	HH
Chassis mounting screw metal door application (#10-24 x 3/4" Phillips flat head mach. screws, 4 pcs)	Mounting Screw (1/4"-20 x 3" Phillips oval head mach. screws 2 pcs)	Top case mounting screw (#10-24 x 3/8" Phillips oval head machine screw 2 pcs)



4

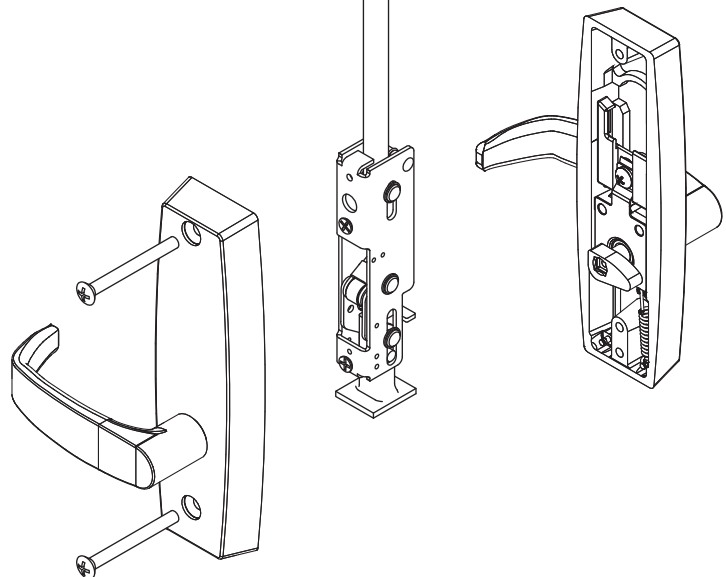
M55 Series Installation Instructions (Less Bottom Rod), continued

7. Slide rod silencer (G) over top bolt (F) onto rod.
8. Position top case (E) over top bolt (F).
9. Secure top case (E) to door with (2) screws. (HH).
10. Install door into the frame using hinges.
11. 764F577 Top Strike. ATTACH Top Strike to door frame, (2) #10-24 x 1/2" flat head screws (References template T31241).



12. BEFORE CLOSING DOOR adjust bolts per steps 6 as needed:

- Either lever retracts both bolts.
- Bolts stay retracted (hold back).
- Bolts release when door closes; button inside top of door hits frame.
- Bolts engage strikes, 1/4" - 5/16".



The ASSA ABLOY Group is the global leader in access solutions. Every day, we help billions of people experience a more open world.

ASSA ABLOY Opening Solutions leads the development within door openings and products for access solutions in homes, businesses and institutions. Our offering includes doors, frames, door and window hardware, locks, perimeter fencing, access control and service.

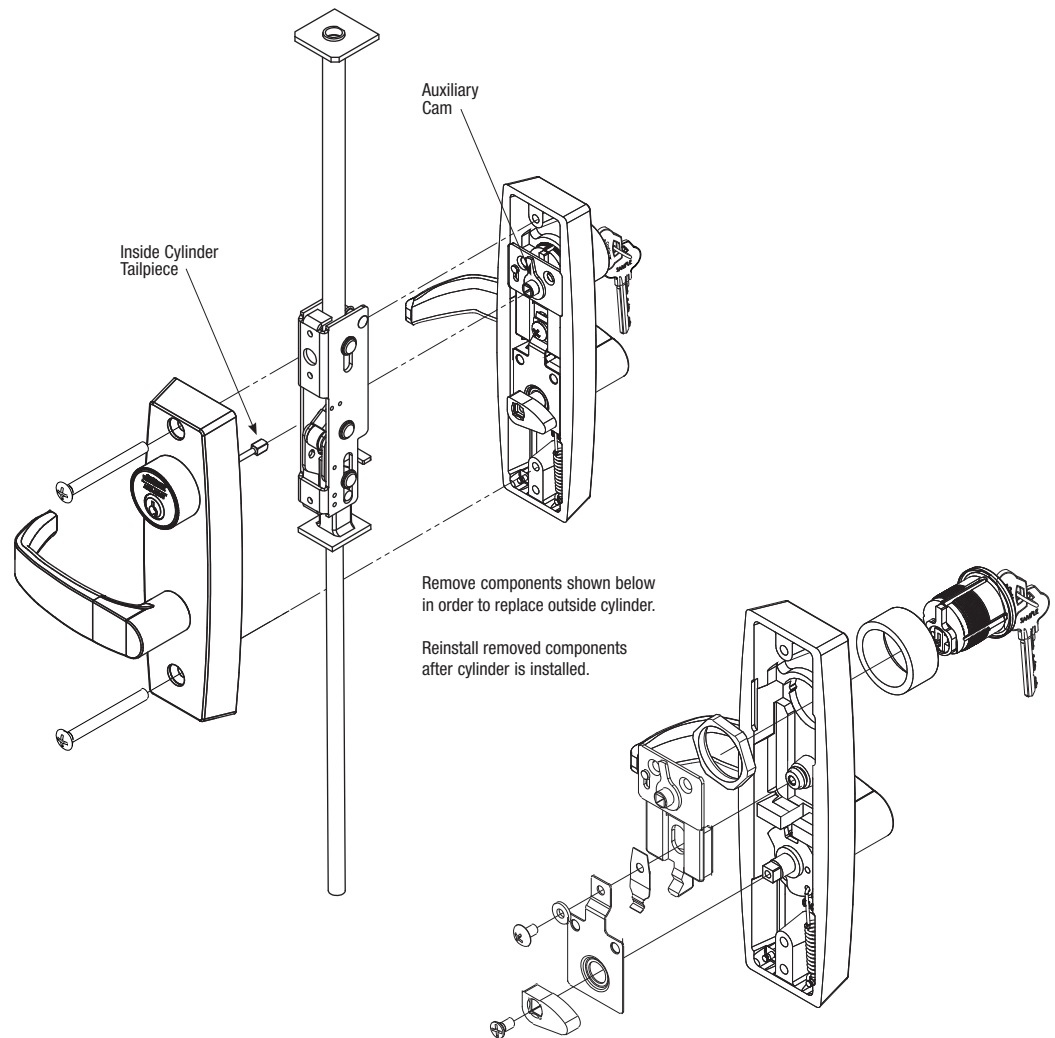


ASSA ABLOY

5

Classroom Intruder (*52) Function Series

1. Through bolt inside and outside lever trims as described on page 6, section 4. Ensure that the inside cylinder tailpiece engages the auxiliary cam on the outside trim.
2. Check for smooth locking and unlocking via cylinder on both sides of the door.



Corbin Russwin
225 Episcopal Road
Berlin, CT 06037 USA
Phone: 800-543-3658