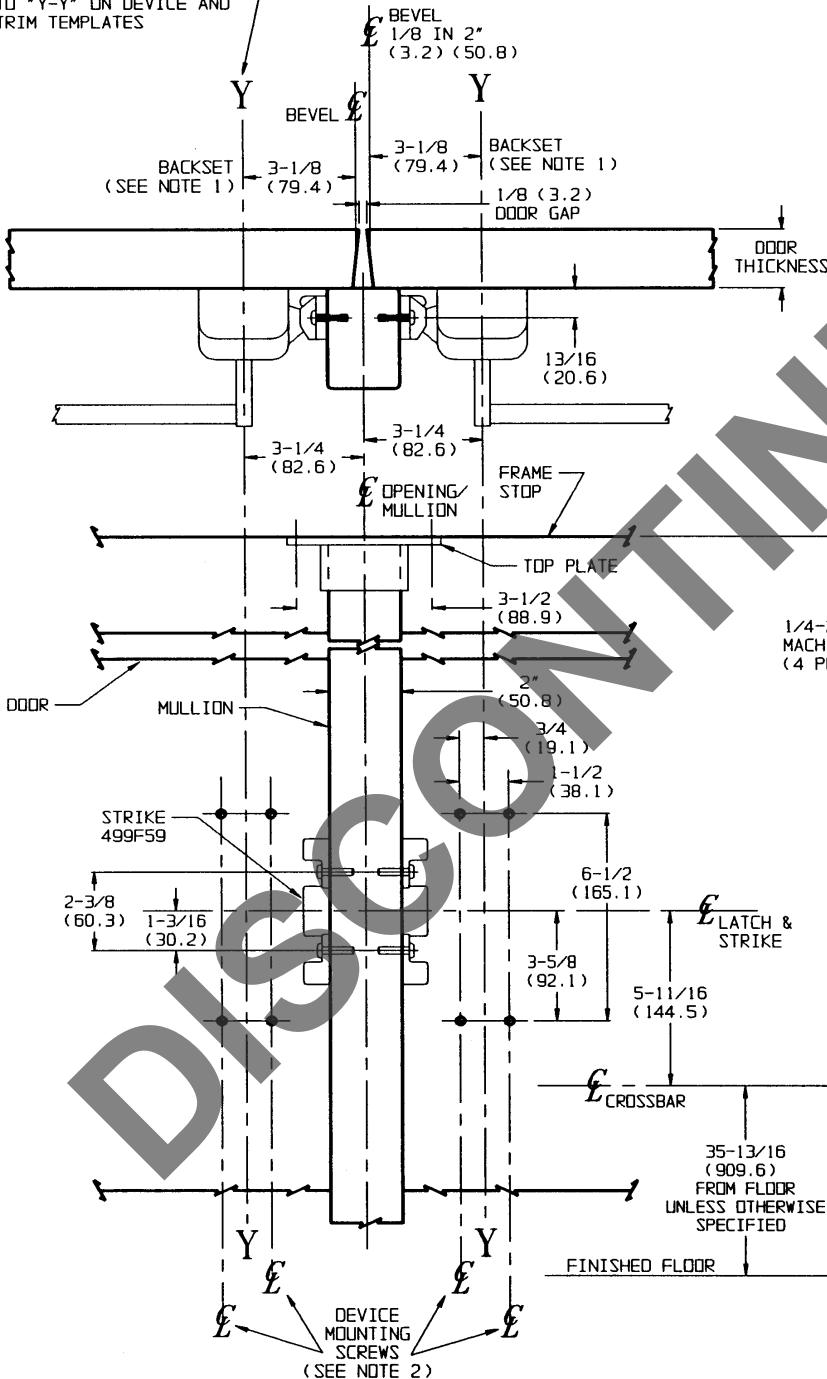


# DOUBLE DOOR APPLICATIONS ONLY

## TEMPLATE CROSS REFERENCE (FOR SINGLE DOOR APPLICATIONS)

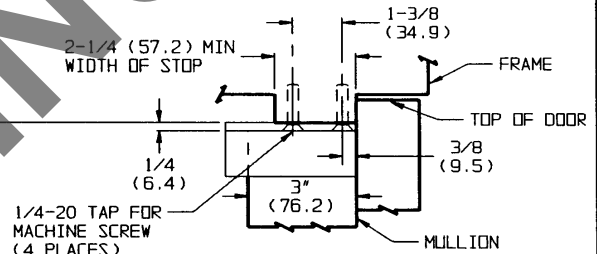
DESCRIPTION	TEMPLATE
ED6200A SERIES RIM DEVICE	T30508

LINES "Y-Y" CORRESPOND TO "Y-Y" ON DEVICE AND TRIM TEMPLATES

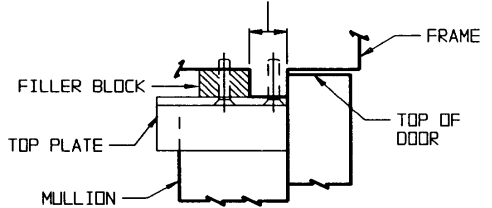


### NOTES:

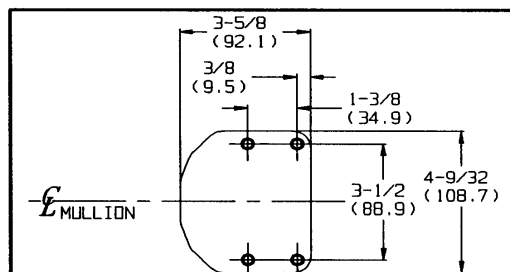
- BACKSET IS MEASURED FROM CENTERLINE OF BEVEL WHICH IS CENTERPOINT OF DOOR THICKNESS.
- FOR OTHER DEVICE AND STRIKE MOUNTING SPECIFICATIONS, REFER TO SINGLE DOOR APPLICATION TEMPLATE.
- FOR PREPARATION OF TRIM, REFER TO SEPARATE TEMPLATE.
- DIMENSIONS GIVEN IN INCHES AND (MM).



FOR FRAME STOP LESS THAN  $2\text{-}\frac{1}{4}$ " (57.2) WIDE, USE FILLER BLOCK AS SHOWN (TO BE FURNISHED BY OTHERS)



FILLER BLOCK APPLICATION



TOP PLATE DETAIL

### RESPONSIBILITY

Door and Frame Manufacturers are responsible for providing adequate construction or reinforcements for proper installation of hardware shown. All architectural builders hardware must be installed on properly reinforced doors and frames, regardless of the type, material, or method of construction.

ED6200A SERIES  
BY 507 MULLION

CROSSBAR RIM EXIT DEVICE  
FIRE RATED

**Corbin Russwin**  
www.corbinrusswin.com

DO NOT SCALE DRAWING			
SUPERSEDES	VT30270	DR.	BTH
DATE	04/08/93	TEMPLATE NUMBER	T30509