

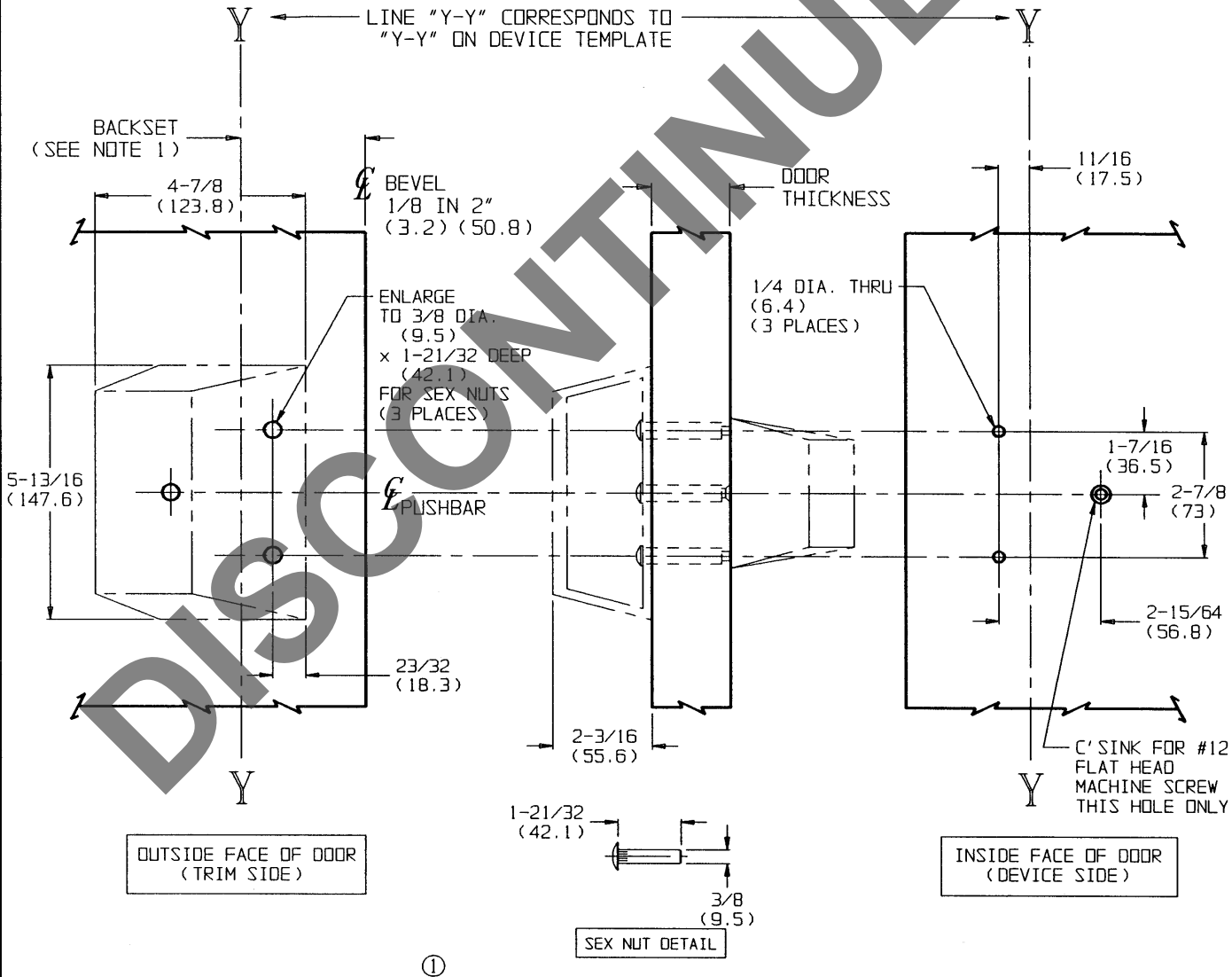
TEMPLATE CROSS REFERENCE

| DEVICE | DESCRIPTION | TEMPLATE |
|--------------|-------------------------------------|----------|
| RIM | ED8200 & ED8200B SERIES | T30436 |
| | ED8200 & ED8200B SERIES x M61 & M62 | T30491 |
| | ED8200A SERIES | T30465 |
| | ED9200 & ED9200B SERIES | T30441 |
| | ED9200 & ED9200B SERIES x M61 & M62 | T30490 |
| VERTICAL ROD | ED9200A SERIES | T30462 |
| | ED8400 SERIES | T30437 |
| | ED8400A SERIES | T30467 |
| | ED9400 SERIES | T30431 |
| | ED9400A SERIES | T30443 |

NOTES:

- BACKSET IS MEASURED FROM CENTERLINE OF BEVEL WHICH IS CENTERPOINT OF DOOR THICKNESS. REFER TO APPROPRIATE DEVICE TEMPLATE FOR BACKSET DIMENSION.
- DIMENSIONS GIVEN IN INCHES AND (MM).

LHR SHOWN
RHR OPPOSITE



RESPONSIBILITY

Door and Frame Manufacturers are responsible for providing adequate construction or reinforcements for proper installation of hardware shown. All architectural builders hardware must be installed on properly reinforced doors and frames, regardless of the type, material, or method of construction.

P 250

PULL EXIT TRIM

Corbin Russwin
www.corbinrusswin.com

DO NOT SCALE DRAWING

| | | | | |
|------------|----------|-----------------|-------------|------|
| SUPERSEDES | T 30484 | DR. | BTH | APP. |
| DATE | 04/02/93 | TEMPLATE NUMBER | T 30484 - 1 | |