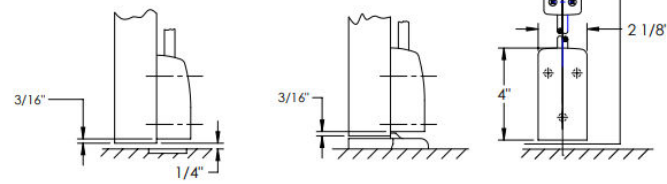
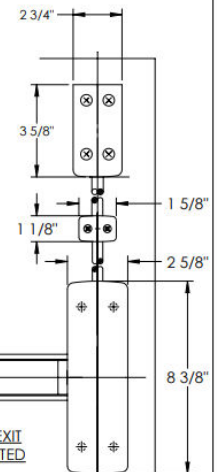
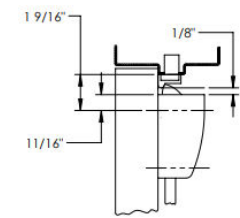
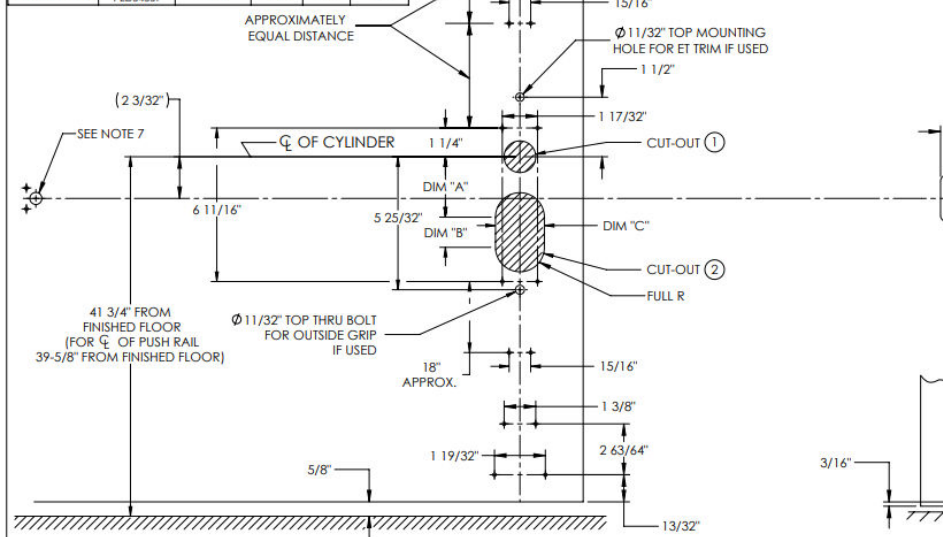


EXIT DEVICE FUNCTION	CUT-OUT ①	CUT-OUT ② INSIDE ONLY, 1 3/16 DEEP		
	THRU DOOR	DIM "A"	DIM "B"	DIM "C"
PE8710 & PE8740	PED5401 & PED5450	-----	-----	-----
PE8704, PE8713, PE8743 & PE874606, PE8713, PE8715, PE8743, PE8746, PE8773, & PE8774	PED5449, PED5445, PED5410, PED5455, PED5459, PED54910, & PED54930	2 5/8"	1 5/16"	2 1/8"
PE8728	PED5410I	3 1/8"	1 3/8"	1 1/2"
PE8762 & PE8763	PED5459T & PED5455T	Ø 1 3/8"	3 1/8"	1 3/8"



- NOTES:
1. TOLERANCE ON ALL DIMENSIONS  $\pm 1/64$ .
  2. WE RECOMMEND THAT ALL TAPPED HOLES BE DRILLED AND TAPPED IN FIELD.
  3. SEE STRIKE TEMPLATE No. MEDT21 FOR TOP AND BOTTOM STRIKES.
  4. SEE MASTER SHEET No. MEDT23 FOR AREAS REQUIRING REINFORCEMENT.
  5. SURFACE OF DOOR WHERE EXIT DEVICE IS TO BE APPLIED MUST BE FLUSH.
  6. FOR GLASS BEADED DOORS, IF GLASS BEAD CAN NOT BE REMOVED, USE SHIM KIT P587 / 875F48.
  7. SEE TEMPLATES NO. MEDT17 FOR ELECTROLYNX DETAILS WHEN NEEDED.
  8. FOR ET TRIM SEE TEMPLATE MEDT19.

**ASSA ABLOY**  
Opening Solutions  
www.assaabloy.com

DOOR MANUFACTURERS TEMPLATE:  
FIRE RATED SURFACE VERTICAL ROD  
EXIT DEVICE

RELEASE DATE  
APRIL 21, 2022  
TEMPLATE NO.  
MEDT13