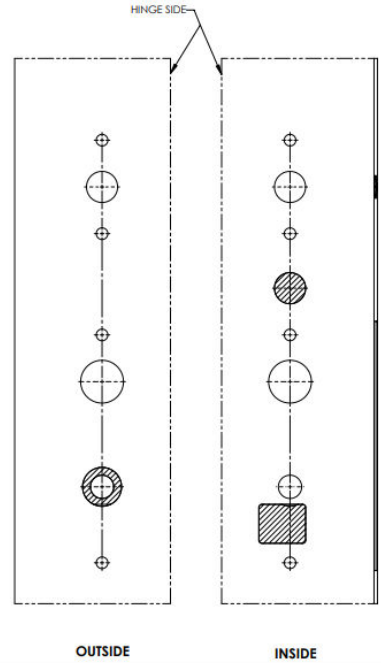
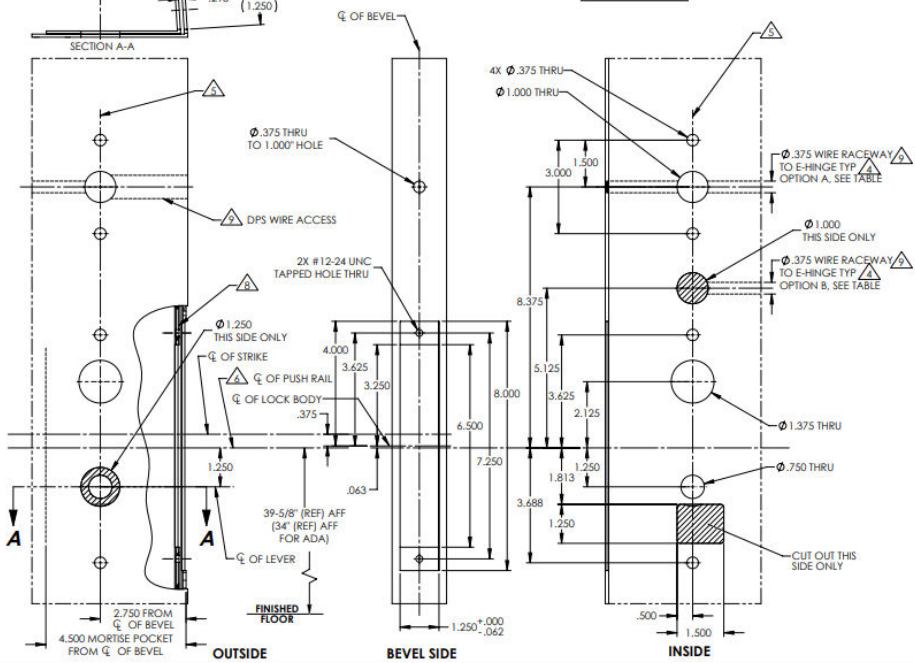
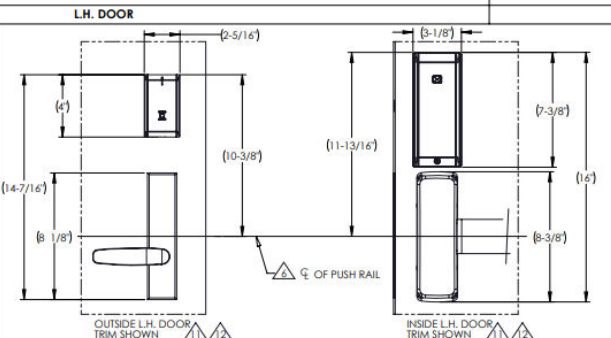


METAL DOOR



NOTES:

- DRAWING IS NOT TO SCALE. PREPARATION DETAILS ARE IN SUPPLEMENT TO ANSI/BHMA A156.115 AND/OR A115W. REFERENCE STRIKE TEMPLATE FOR DETAILS TO PREPARE FRAME.
- FOR ELECTROLYNIX APPLICATIONS, REFER TO MCKINNEY TRANSFER DEVICE CATALOG.
- VERTICAL CENTERING IS REFERENCED FROM THE CENTERLINE OF THE BEVEL. (INDUSTRY STANDARD BEVEL IS 1/8 INCH IN 2 INCHES.)
- CONSULT THE AUTHORITY HAVING JURISDICTION (AHJ) TO VERIFY THE RECOMMENDED MOUNTING HEIGHT ABOVE THE FINISHED FLOOR (AFF). STANDARD TOLERANCE OF ± 0.15 APPLIES TO ALL DOOR PREPARATION REQUIREMENTS, UNLESS OTHERWISE SPECIFIED.
- DOOR REINFORCEMENT IS RECOMMENDED TO IMPROVE (SURFACE MOUNTED) FASTENER HOLDING POWER AND CRUSH RESISTANCE (WHEN THRU-BOLTING IS EMPLOYED). CONSTRUCTION TECHNIQUES SHOULD REFLECT INDUSTRY BEST PRACTICES (I.E. WDMA, SDI) AND AUTHORIZED METHODS WHERE LABEL SERVICE (I.E. UL, W-H) IS IN EFFECT.
- WIRE RACEWAY AREAS SHOULD BE FREE OF OBSTRUCTIONS & SHARP EDGES TO PROTECT WIRES FROM CUTS & ABRASIONS. CAREFULLY NOTE WHICH FEATURES ARE OPTIONAL, WHETHER THE FEATURE APPLIES TO BOTH SIDES OF THE DOOR AND/OR IF A DEPTH APPLIES.
- MAXIMUM PRODUCT DIMENSIONS ARE SHOWN FOR THE PURPOSE OF VERIFYING FITMENT WITH DOOR FRAME STOPS, DOOR STILE SIZE & LIGHT/OVER KITS.
- NARROW ESCUTCHEON SHOWN. IF OPTIONAL LEVERS OR ROSES ARE USED REFERENCE THE RELATED PRODUCT DIMENSIONS TO VERIFY THE FITMENT REQUIREMENTS.



AUTHORIZED OPTIONS		
IN100, IN120, IN220		
OPTIONS TABLE		
OPTION	DESCRIPTION	USED FOR OPTIONS
A	HARD WIRE	IN100, IN120, IN220
B	POWER OVER ETHERNET	ALL OTHERS

BACKSET DEFINITION		DOOR HANDING	

ASSA ABLOY ASSA ABLOY	DOOR MANUFACTURERS TEMPLATE: IN SERIES TRIM METAL DOOR SERIES MORTISE EXIT DEVICE	RELEASE DATE: 07/26/2022	TEMPLATE NO. MEDT54
SHEET 1 OF 2			