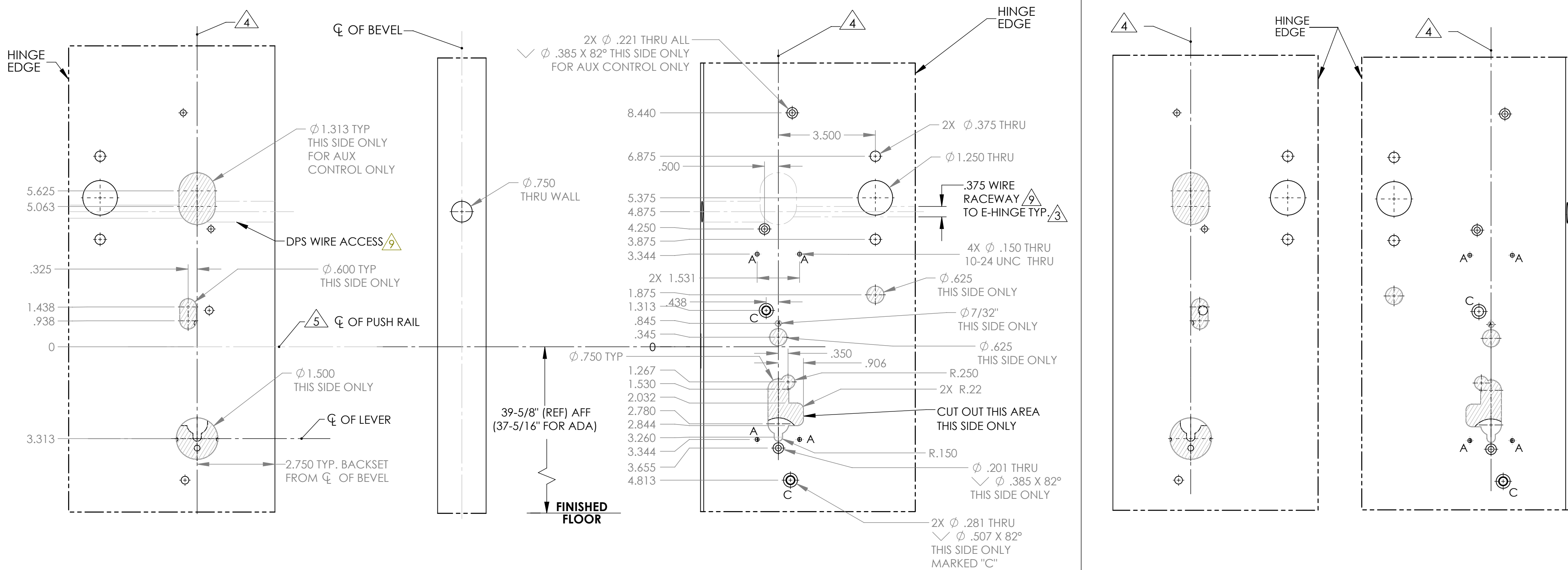


# METAL DOOR



L.H.R.B. OUTSIDE

L.H.R.B. BEVEL SIDE

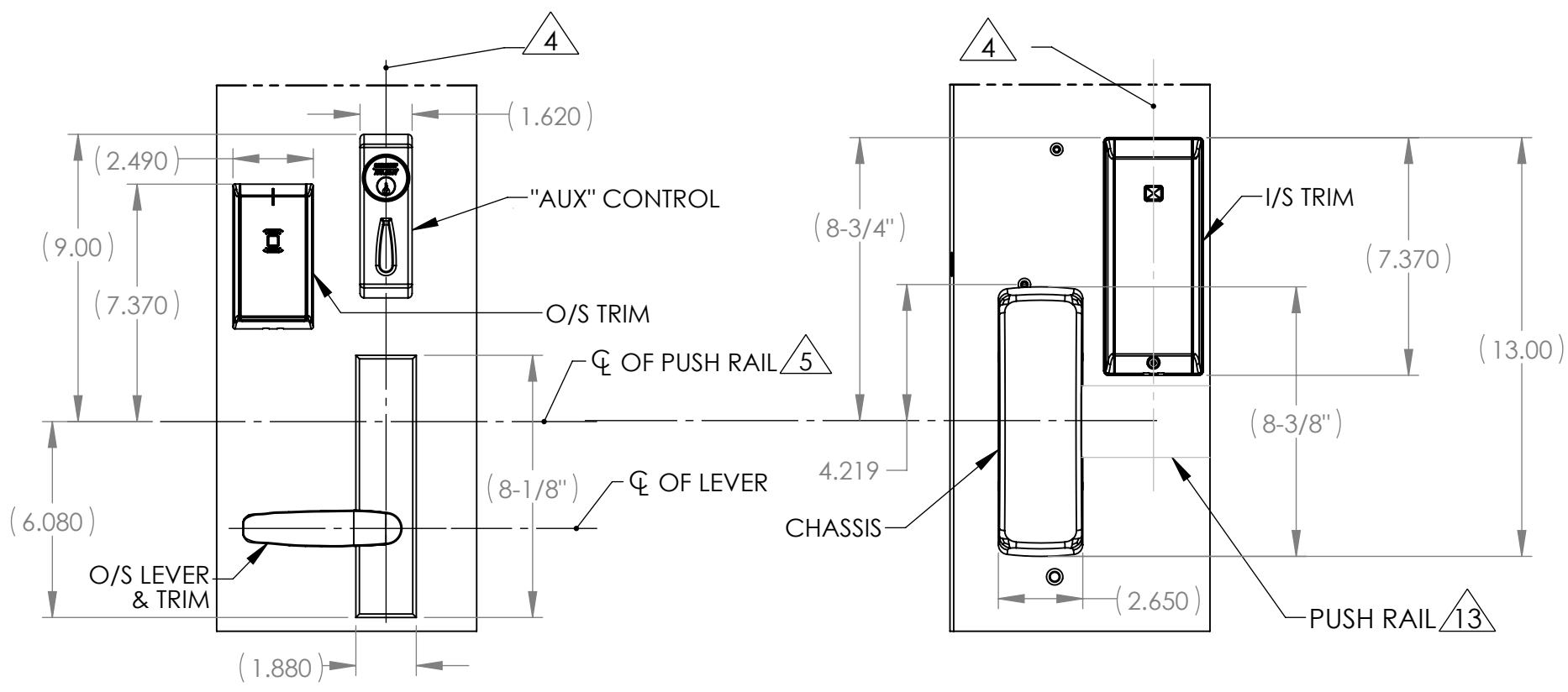
L.H.R.B. INSIDE

R.H.R.B. OUTSIDE

R.H.R.B. INSIDE

**NOTES:**

1. DRAWING IS NOT TO SCALE.
2. REFERENCE STRIKE TEMPLATE FOR DETAILS TO PREPARE FRAME.
3. FOR ELECTROLYNX APPLICATIONS, REFER TO MCKINNEY TRANSFER DEVICE CATALOG.
4. VERTICAL CENTERLINE IS REFERENCED FROM THE CENTERLINE OF THE BEVEL. (INDUSTRY STANDARD BEVEL IS 1/8 INCH IN 2 INCHES.)
5. CONSULT THE AUTHORITY HAVING JURISDICTION (AHJ) TO VERIFY THE RECOMMENDED MOUNTING HEIGHT ABOVE THE FINISHED FLOOR (AFF). LIMITATIONS IN THE DOOR CONSTRUCTION PROCESS MAY REQUIRE SOME HOLES TO BE FIELD-LOCATED USING THE PHYSICAL PART AS A TEMPLATE.
6. STANDARD TOLERANCE OF  $\pm .015$  APPLIES TO ALL DOOR PREPARATION REQUIREMENTS, UNLESS OTHERWISE SPECIFIED.
7. DOOR REINFORCEMENT IS RECOMMENDED TO IMPROVE (SURFACE MOUNTED) FASTENER HOLDING POWER AND CRUSH RESISTANCE (WHEN THRU-BOLTING IS EMPLOYED). CONSTRUCTION TECHNIQUES SHOULD REFLECT INDUSTRY BEST PRACTICES (I.E. WDMA, SDI) AND AUTHORIZED METHODS WHERE LABEL SERVICE (I.E. UL, W-H) IS IN EFFECT.
8. WIRE RACEWAY AREAS SHALL BE FREE OF OBSTRUCTIONS & SHARP EDGES TO PROTECT WIRES FROM CUTS & ABRASIONS.
9. CAREFULLY NOTE WHICH FEATURES ARE OPTIONAL, (WHETHER THE FEATURE APPLIES TO BOTH SIDES OF THE DOOR AND/OR IF A DEPTH APPLIES.)
10. MAXIMUM PRODUCT DIMENSIONS ARE SHOWN FOR THE PURPOSE OF VERIFYING FITMENT WITH DOOR FRAME STOPS, DOOR STILE SIZE & LIGHT/LOUVER KITS.
11. IF OPTIONAL LEVERS OR ROSES ARE USED REFERENCE THE RELATED PRODUCT DIMENSIONS TO VERIFY THE FITMENT REQUIREMENTS.
12. SEE TEMPLATE MEDT4 (METAL DOORS) & MEDT33 (WOOD DOORS) FOR EXIT DEVICE & ROD LATCH PREP.

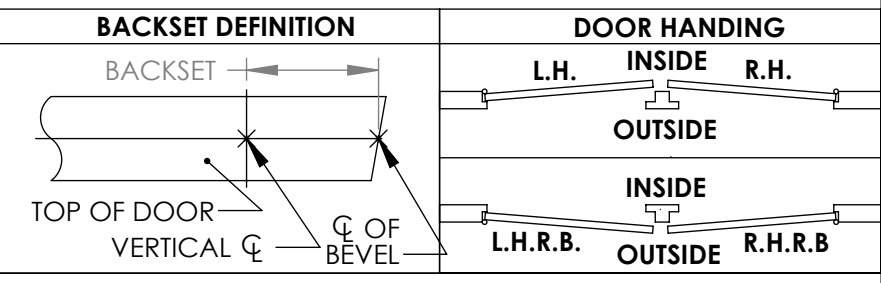


OUTSIDE L.H.R.B. TRIM SHOWN 11 12

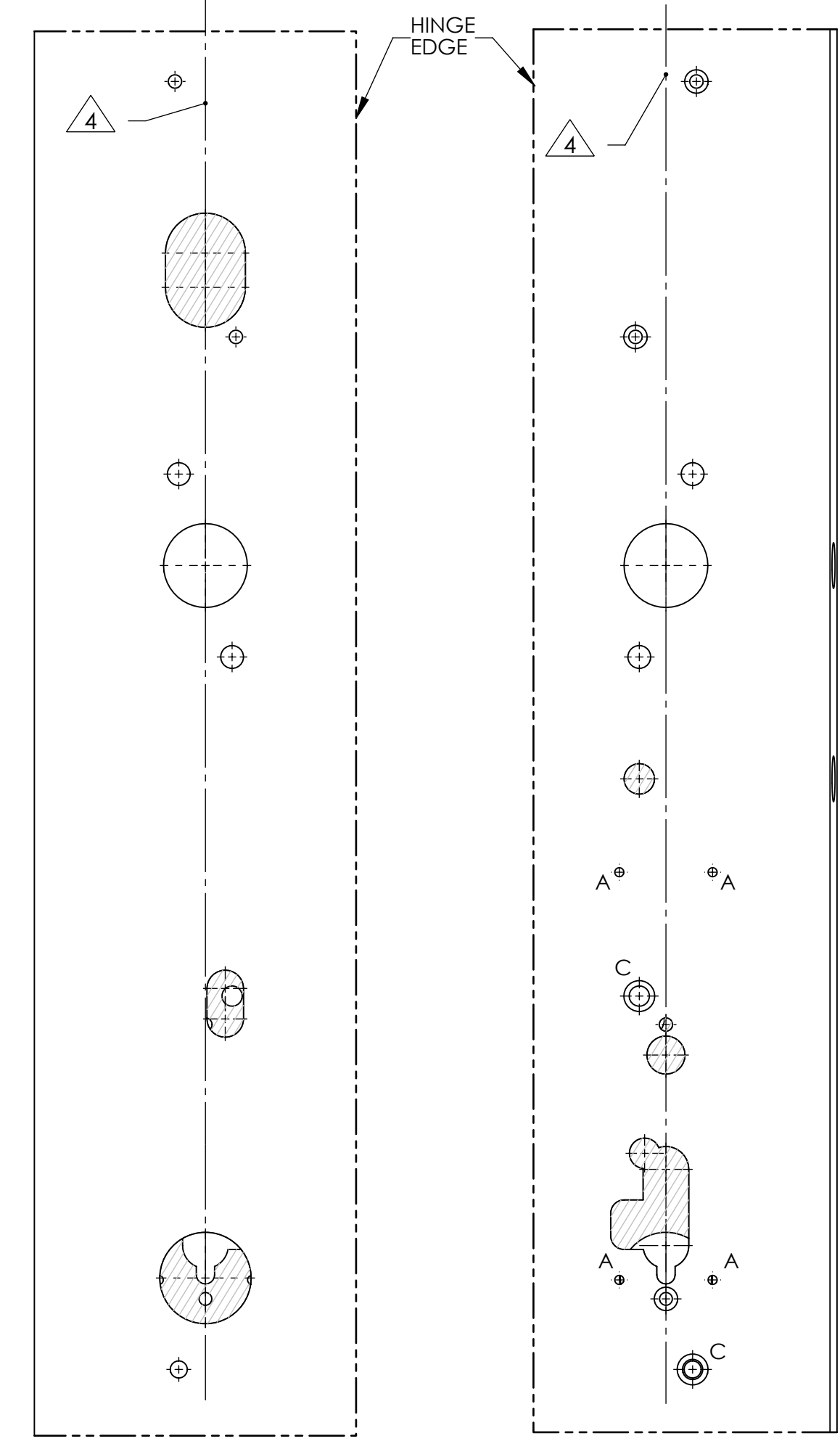
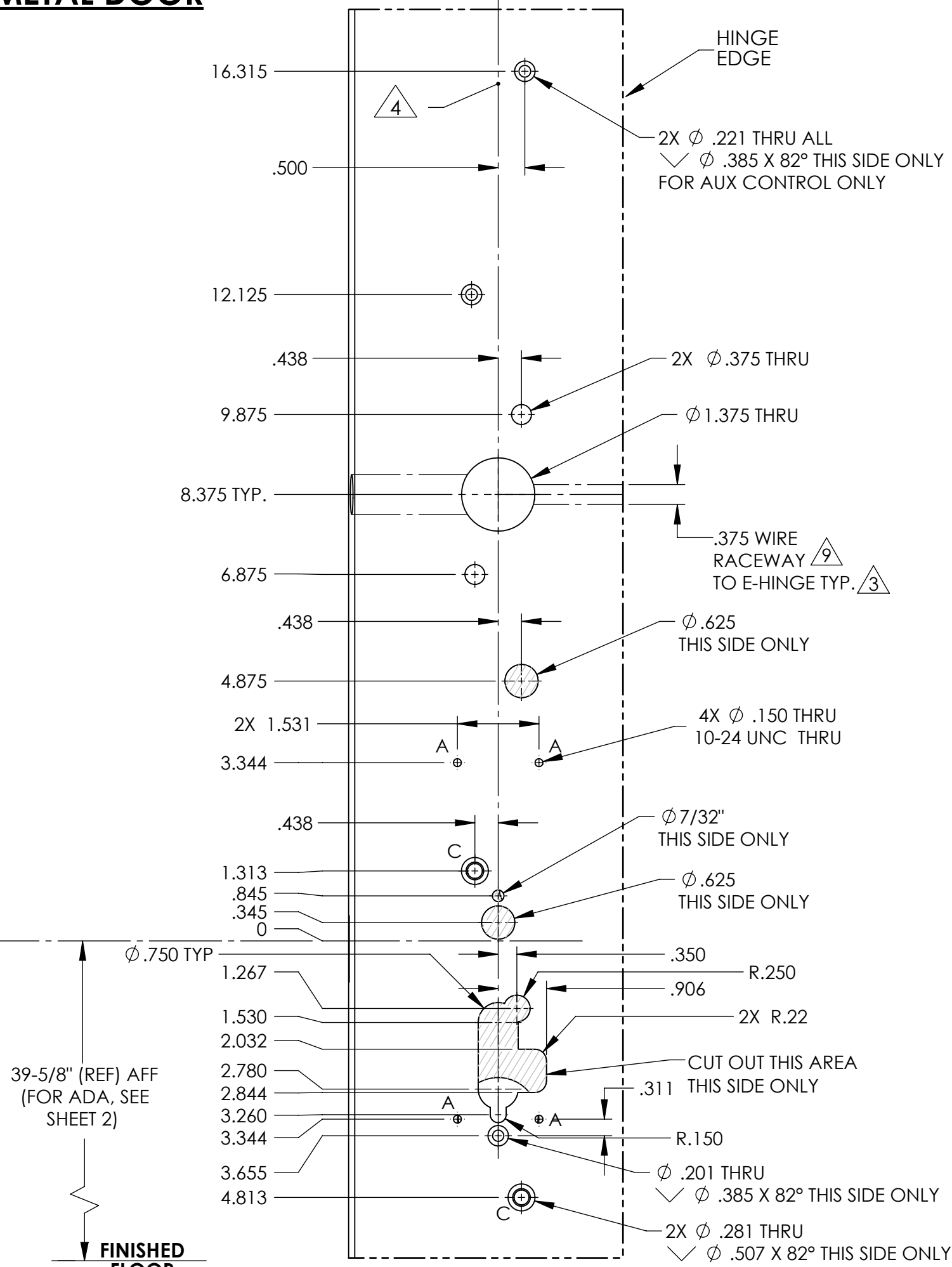
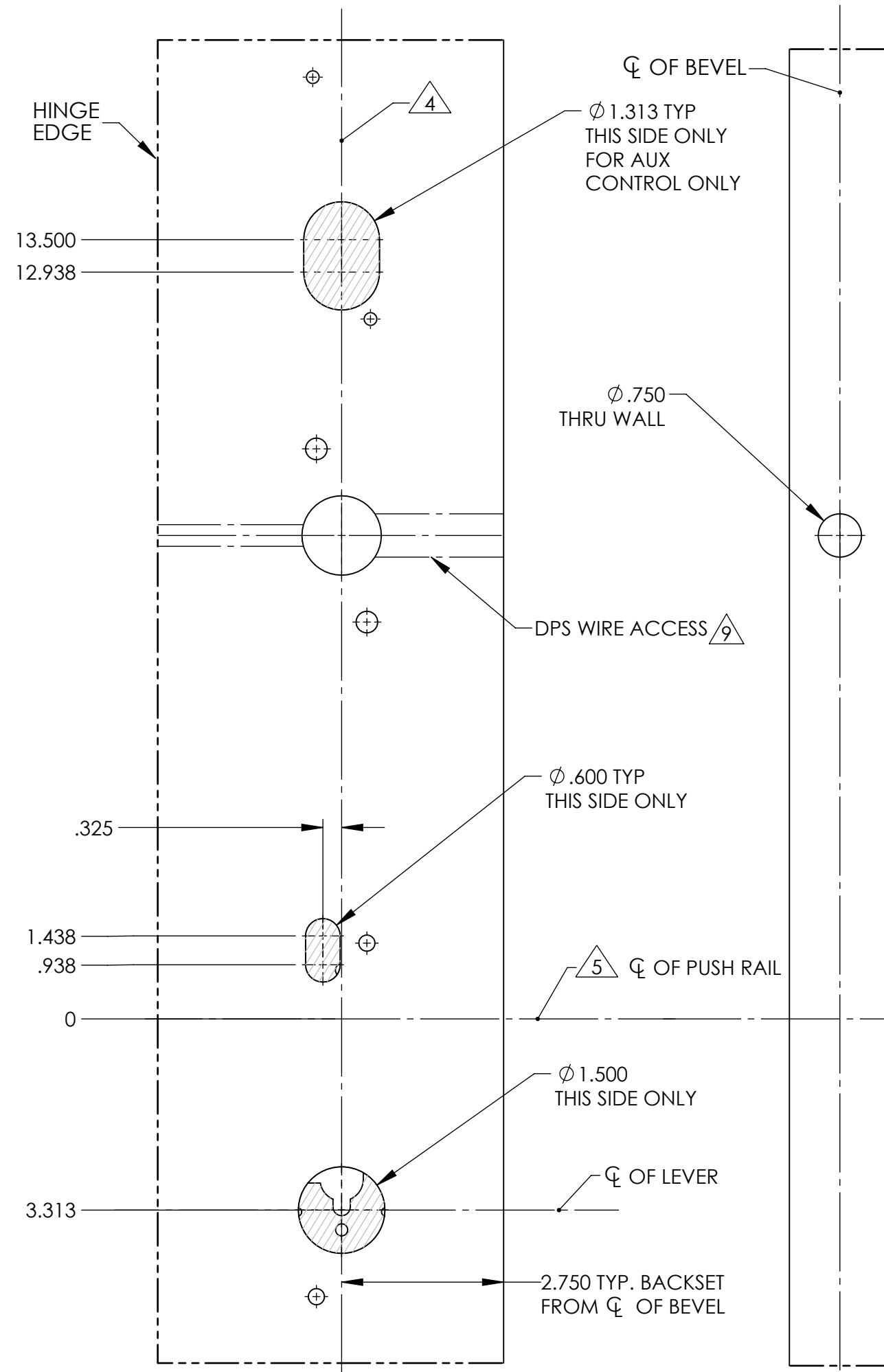
INSIDE L.H.R.B. TRIM SHOWN 11 12

AUTHORIZED OPTIONS	
IN100, IN120, IN 220	

OPTIONS TABLE			
OPTION	DESCRIPTION	USED FOR OPTIONS	
		91- / M35	ALL OTHERS
A	HARD WIRE	X	-
		IN220	ALL OTHERS
B	POWER OVER ETHERNET	X	-



# METAL DOOR



L.H.R.B. OUTSIDE

L.H.R.B. BEVEL SIDE

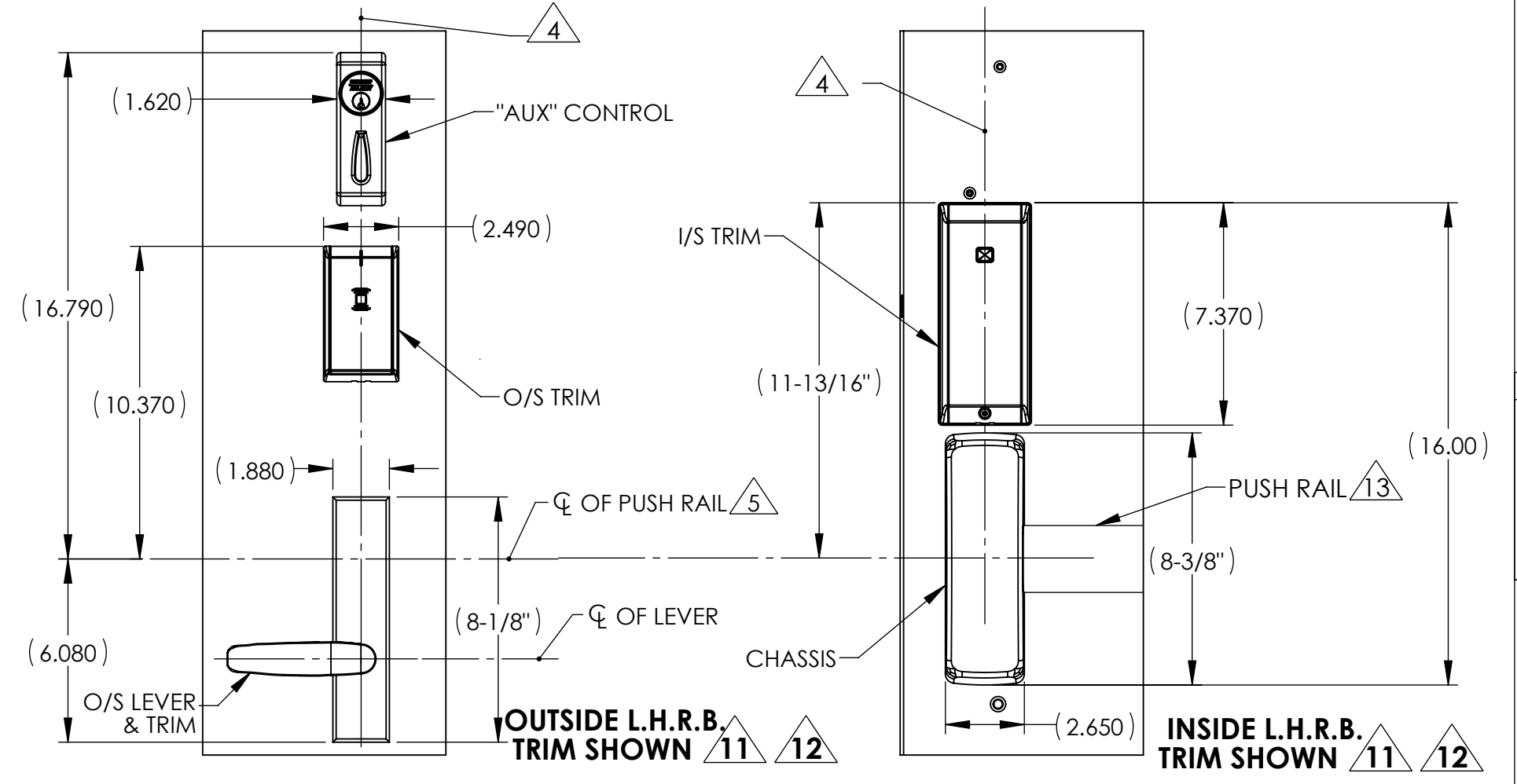
L.H.R.B. INSIDE

R.H.R.B. OUTSIDE

R.H.R.B. INSIDE

**NOTES:**

- DRAWING IS NOT TO SCALE. REFERENCE STRIKE TEMPLATE FOR DETAILS TO PREPARE FRAME.
- FOR ELECTROLYNX APPLICATIONS, REFER TO MCKINNEY TRANSFER DEVICE CATALOG.
- VERTICAL CENTERLINE IS REFERENCED FROM THE CENTERLINE OF THE BEVEL. (INDUSTRY STANDARD BEVEL IS 1/8 INCH IN 2 INCHES.)
- CONSULT THE AUTHORITY HAVING JURISDICTION (AHJ) TO VERIFY THE RECOMMENDED MOUNTING HEIGHT ABOVE THE FINISHED FLOOR (AFF). LIMITATIONS IN THE DOOR CONSTRUCTION PROCESS MAY REQUIRE SOME HOLES TO BE FIELD-LOCATED USING THE PHYSICAL PART AS A TEMPLATE.
- STANDARD TOLERANCE OF ± .015 APPLIES TO ALL DOOR PREPARATION REQUIREMENTS, UNLESS OTHERWISE SPECIFIED.
- DOOR REINFORCEMENT IS RECOMMENDED TO IMPROVE (SURFACE MOUNTED) FASTENER HOLDING POWER AND CRUSH RESISTANCE (WHEN THRU-BOLTING IS EMPLOYED). CONSTRUCTION TECHNIQUES SHOULD REFLECT INDUSTRY BEST PRACTICES (I.E. WDMA, SDI) AND AUTHORIZED METHODS WHERE LABEL SERVICE (I.E. UL, W-H) IS IN EFFECT.
- WIRE RACEWAY AREAS SHALL BE FREE OF OBSTRUCTIONS & SHARP EDGES TO PROTECT WIRES FROM CUTS & ABRASIONS.
- CAREFULLY NOTE WHICH FEATURES ARE OPTIONAL, (WHETHER THE FEATURE APPLIES TO BOTH SIDES OF THE DOOR AND/OR IF A DEPTH APPLIES.)
- MAXIMUM PRODUCT DIMENSIONS ARE SHOWN FOR THE PURPOSE OF VERIFYING FITMENT WITH DOOR FRAME STOPS, DOOR STILE SIZE & LIGHT/LOUVER KITS.
- IF OPTIONAL LEVERS OR ROSES ARE USED REFERENCE THE RELATED PRODUCT DIMENSIONS TO VERIFY THE FITMENT REQUIREMENTS.
- SEE TEMPLATE MEDT4 (METAL DOORS) & MEDT33 (WOOD DOORS) FOR EXIT DEVICE & ROD LATCH PREP.



OUTSIDE L.H.R.B. TRIM SHOWN 11 12

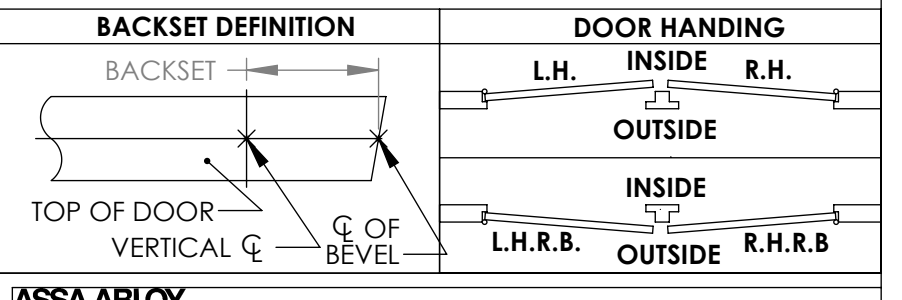
INSIDE L.H.R.B. TRIM SHOWN 11 12

**AUTHORIZED OPTIONS**

IN100, IN120, IN 220
----------------------

**OPTIONS TABLE**

OPTION	DESCRIPTION	USED FOR OPTIONS	
		91- / M35	ALL OTHERS
A	HARD WIRE	X	-
B	POWER OVER ETHERNET	X	-



**ASSA ABLOY**  
Opening Solutions

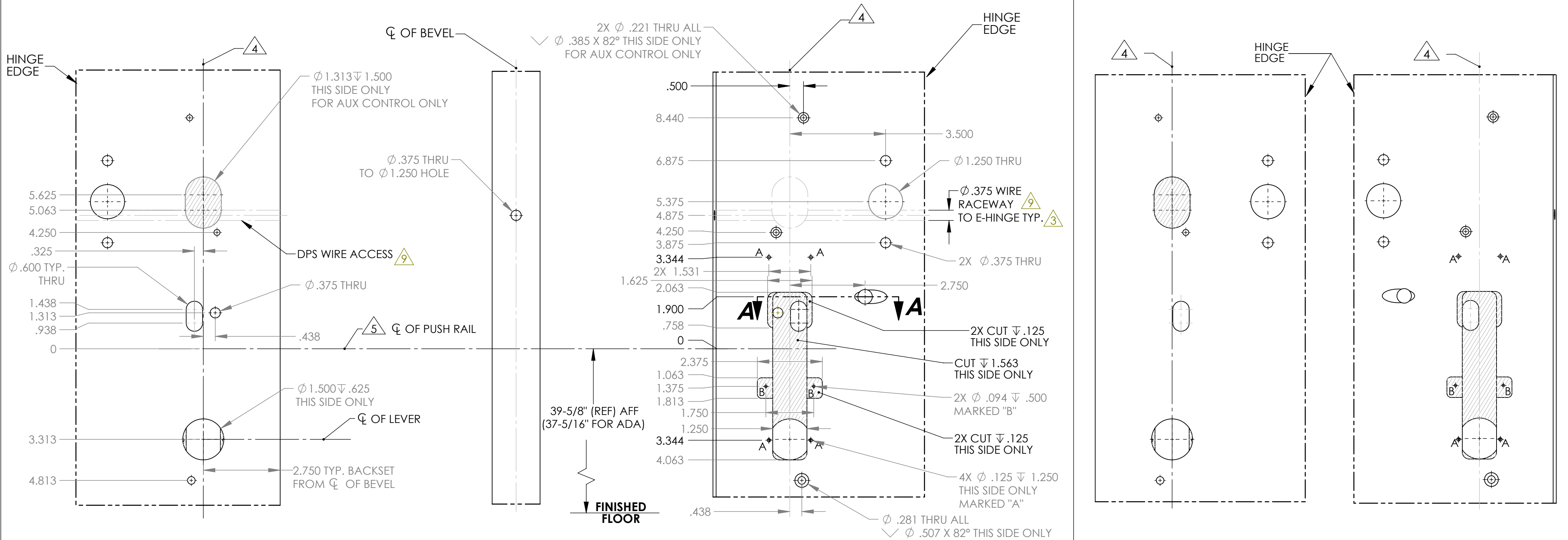
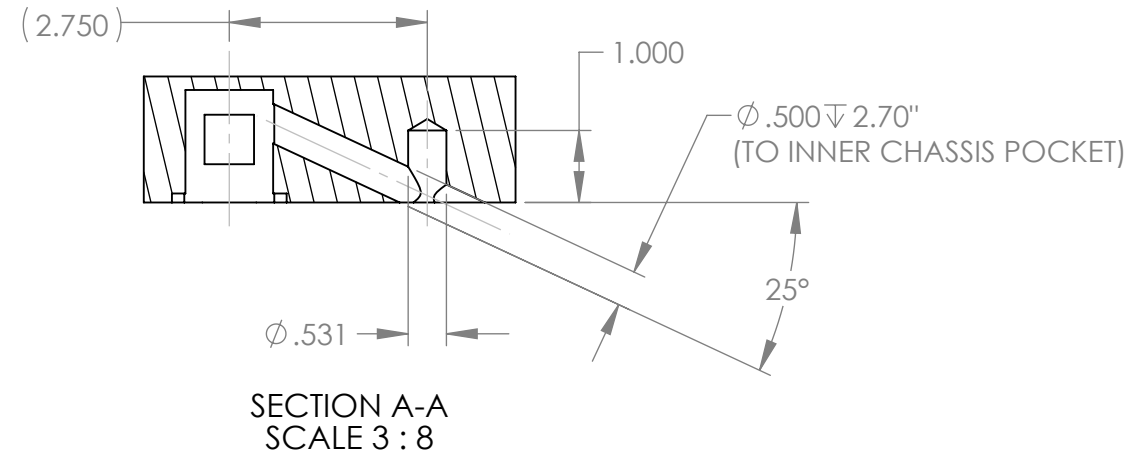
DOOR MANUFACTURERS TEMPLATE:  
IN SERIES TRIM (STD. ON-CENTER)  
METAL DOOR  
CVR EXIT DEVICE

RELEASE DATE  
10/16/2023

TEMPLATE NO.  
MEDT68\_3

SHEET 2 OF 4

# WOOD DOOR



L.H.R.B. OUTSIDE

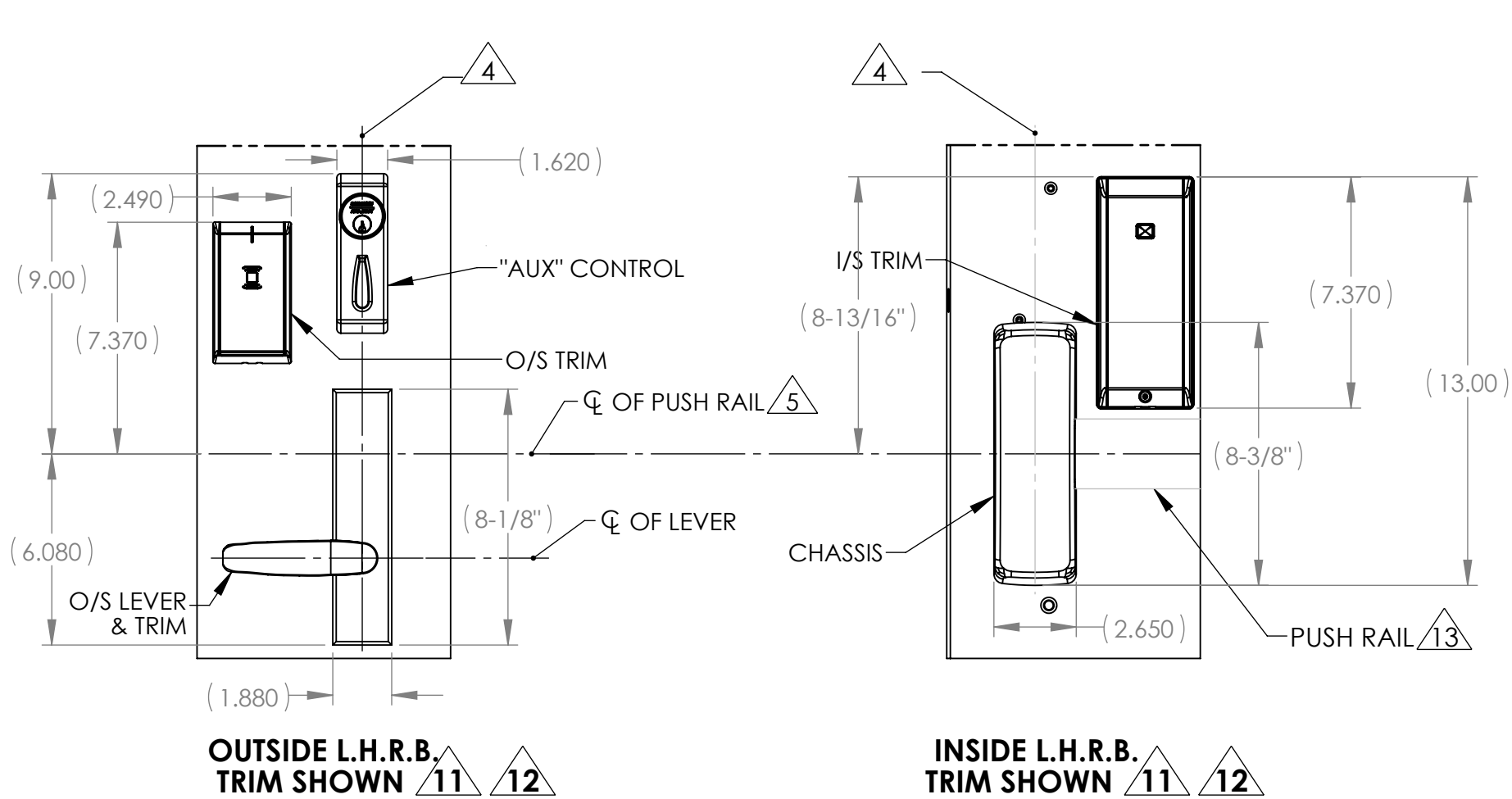
L.H.R.B. BEVEL SIDE

L.H.R.B. INSIDE

R.H.R.B. OUTSIDE

R.H.R.B. INSIDE

- NOTES:
- DRAWING IS NOT TO SCALE. REFERENCE STRIKE TEMPLATE FOR DETAILS TO PREPARE FRAME.
  - FOR ELECTROLYNX APPLICATIONS, REFER TO MCKINNEY TRANSFER DEVICE CATALOG.
  - VERTICAL CENTERLINE IS REFERENCED FROM THE CENTERLINE OF THE BEVEL. (INDUSTRY STANDARD BEVEL IS 1/8 INCH IN 2 INCHES.)
  - CONSULT THE AUTHORITY HAVING JURISDICTION (AHJ) TO VERIFY THE RECOMMENDED MOUNTING HEIGHT ABOVE THE FINISHED FLOOR (AFF). LIMITATIONS IN THE DOOR CONSTRUCTION PROCESS MAY REQUIRE SOME HOLES TO BE FIELD-LOCATED USING THE PHYSICAL PART AS A TEMPLATE. STANDARD TOLERANCE OF  $\pm .015$  APPLIES TO ALL DOOR PREPARATION REQUIREMENTS, UNLESS OTHERWISE SPECIFIED.
  - DOOR REINFORCEMENT IS RECOMMENDED TO IMPROVE (SURFACE MOUNTED) FASTENER HOLDING POWER AND CRUSH RESISTANCE (WHEN THRU-BOLTING IS EMPLOYED). CONSTRUCTION TECHNIQUES SHOULD REFLECT INDUSTRY BEST PRACTICES (I.E. WDMA, SDI) AND AUTHORIZED METHODS WHERE LABEL SERVICE (I.E. UL, W-H) IS IN EFFECT.
  - WIRE RACEWAY AREAS SHALL BE FREE OF OBSTRUCTIONS & SHARP EDGES TO PROTECT WIRES FROM CUTS & ABRASIONS.
  - CAREFULLY NOTE WHICH FEATURES ARE OPTIONAL, (WHETHER THE FEATURE APPLIES TO BOTH SIDES OF THE DOOR AND/OR IF A DEPTH APPLIES.)
  - MAXIMUM PRODUCT DIMENSIONS ARE SHOWN FOR THE PURPOSE OF VERIFYING FITMENT WITH DOOR FRAME STOPS, DOOR STILE SIZE & LIGHT/LOUVER KITS. IF OPTIONAL LEVERS OR ROSES ARE USED REFERENCE THE RELATED PRODUCT DIMENSIONS TO VERIFY THE FITMENT REQUIREMENTS.
  - SEE TEMPLATE MEDT4 (METAL DOORS) & MEDT33 (WOOD DOORS) FOR EXIT DEVICE & ROD LATCH PREP.

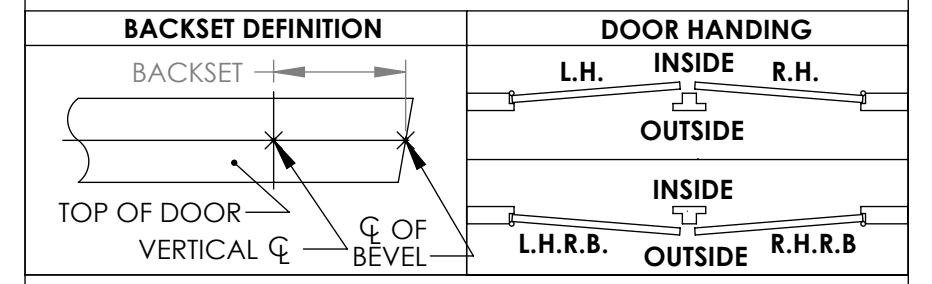


OUTSIDE L.H.R.B. TRIM SHOWN

INSIDE L.H.R.B. TRIM SHOWN

**AUTHORIZED OPTIONS**  
IN100, IN120, IN 220

OPTIONS TABLE			
OPTION	DESCRIPTION	USED FOR OPTIONS	
		91- / M35	ALL OTHERS
A	HARD WIRE	X	-
B	POWER OVER ETHERNET	IN220	ALL OTHERS



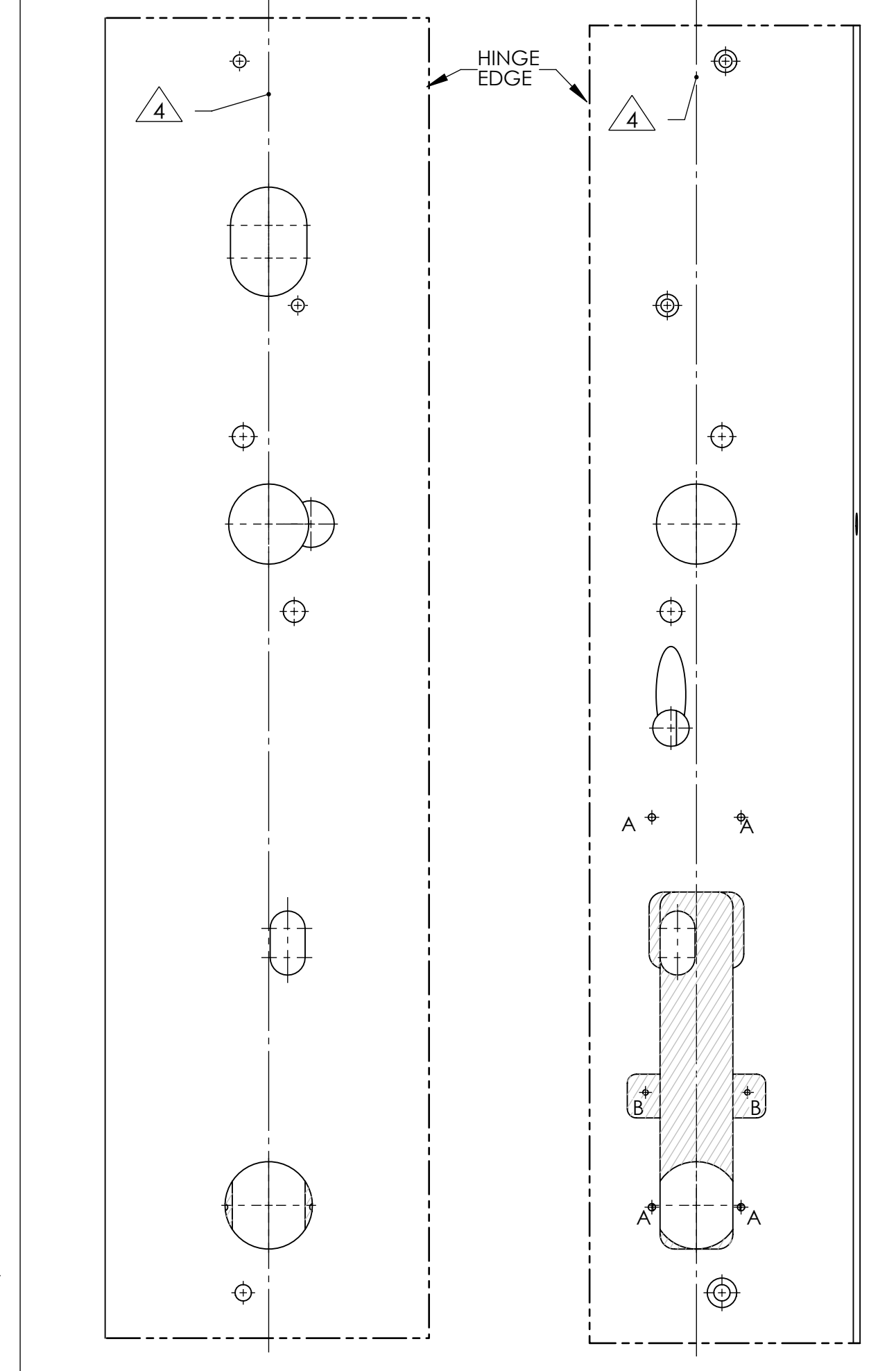
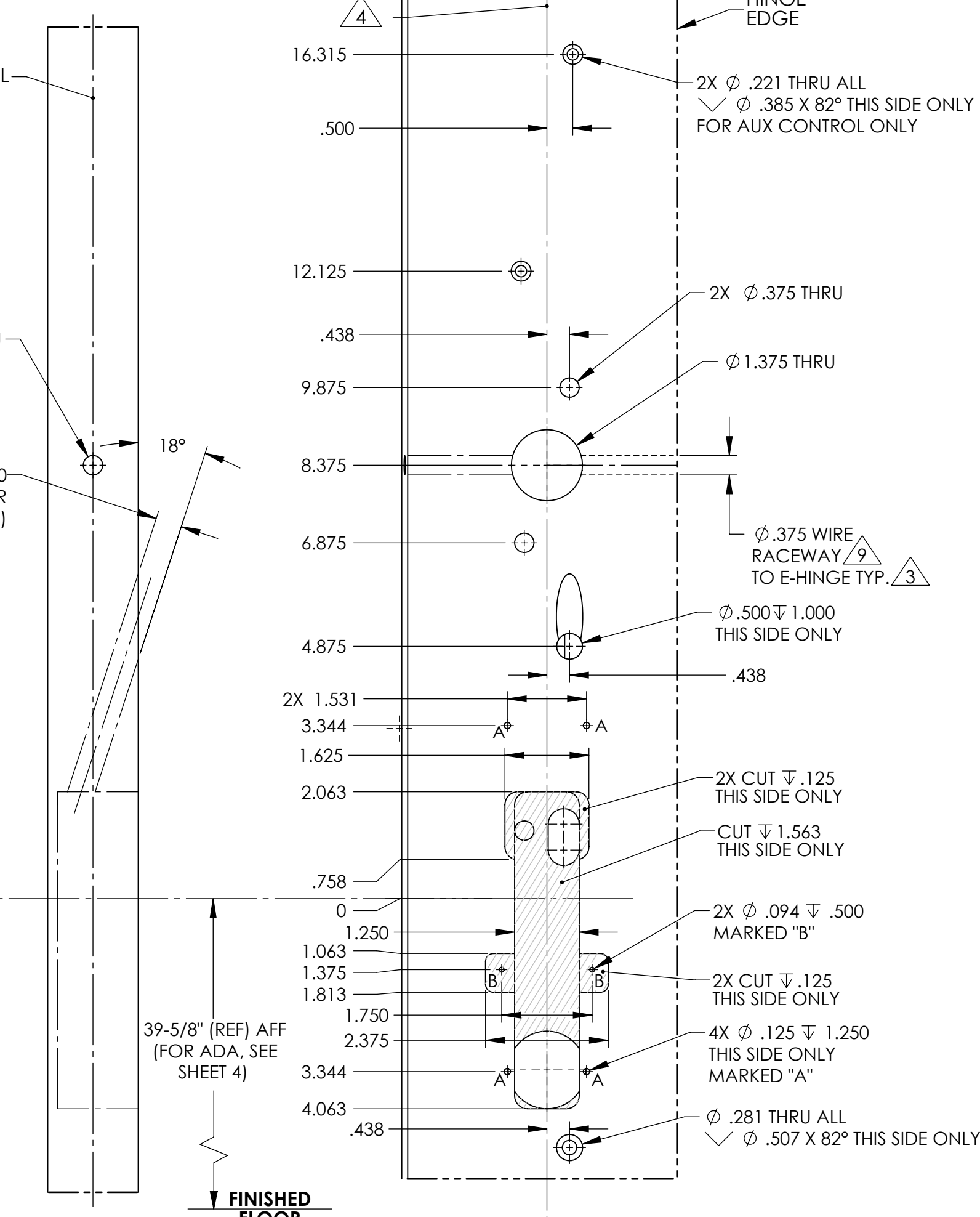
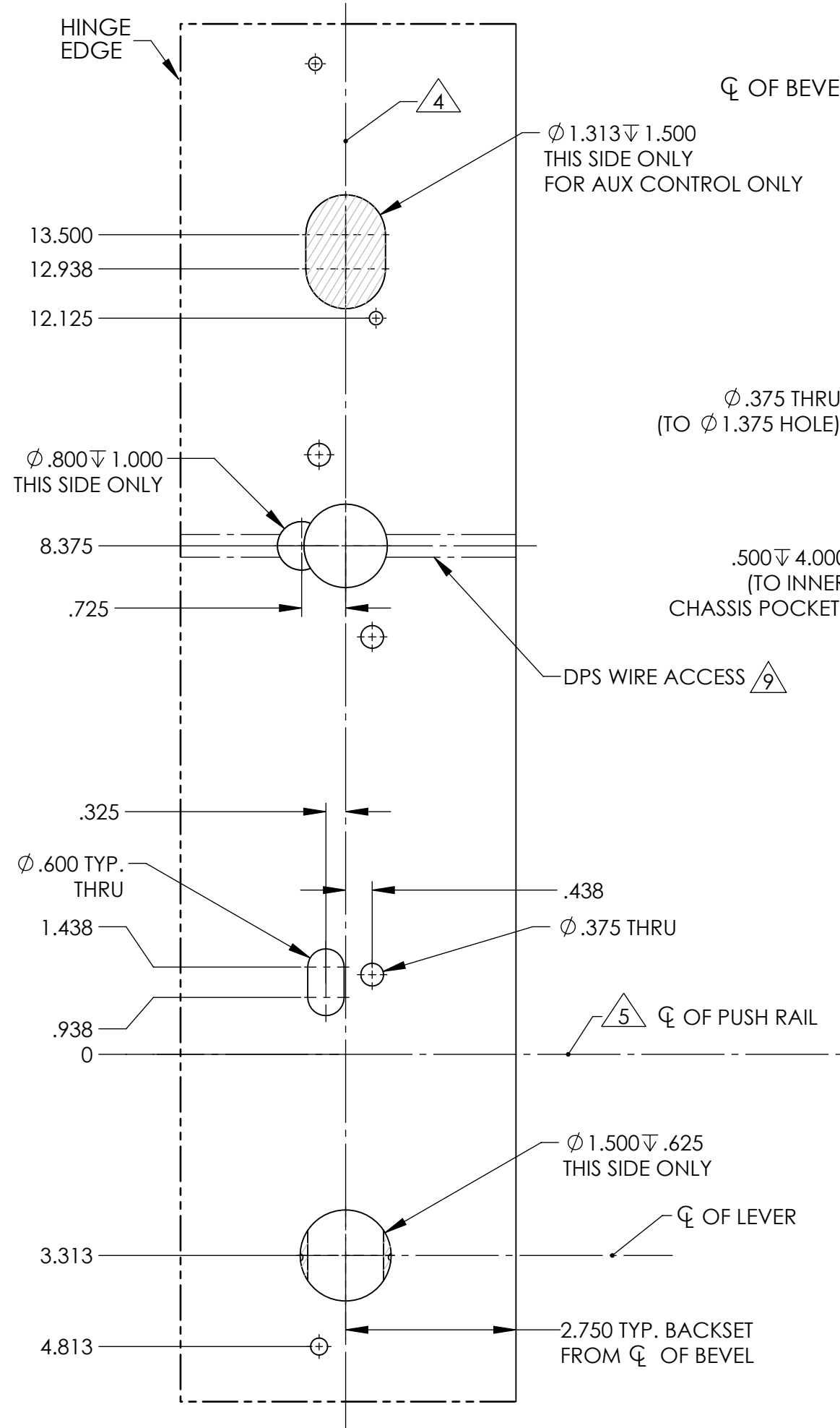
**ASSA ABLOY**  
Opening Solutions  
Experience a safer and more open world.

DOOR MANUFACTURERS TEMPLATE: IN SERIES TRIM (EA OPTION)  
WOOD DOOR  
CVR EXIT DEVICE

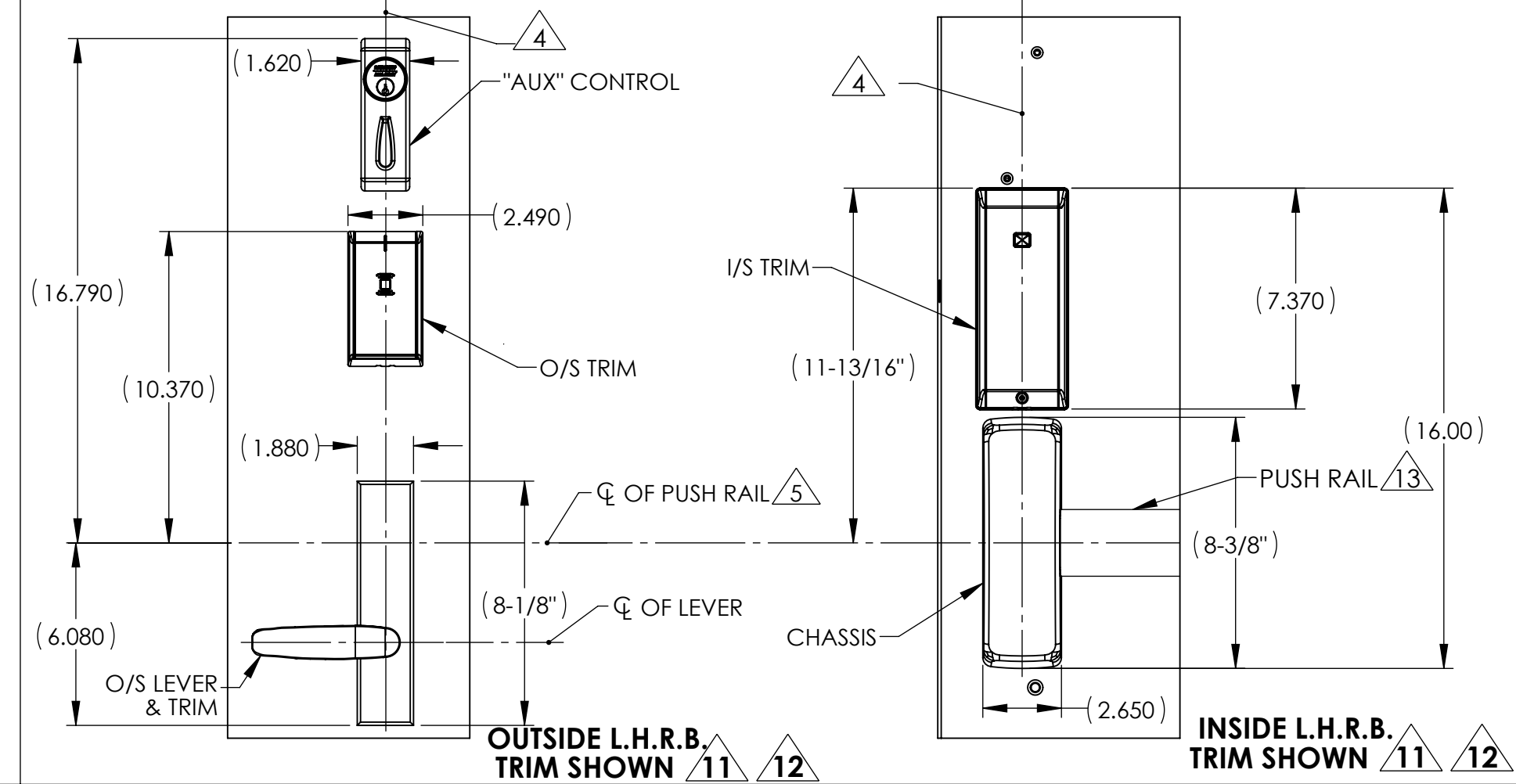
RELEASE DATE: 10/16/2023  
TEMPLATE NO.: MEDT68\_3

SHEET 3 OF 4

# WOOD DOOR



- NOTES:**
- DRAWING IS NOT TO SCALE. REFERENCE STRIKE TEMPLATE FOR DETAILS TO PREPARE FRAME.
  - FOR ELECTROLYNX APPLICATIONS, REFER TO MCKINNEY TRANSFER DEVICE CATALOG.
  - VERTICAL CENTERLINE IS REFERENCED FROM THE CENTERLINE OF THE BEVEL. (INDUSTRY STANDARD BEVEL IS 1/8 INCH IN 2 INCHES.)
  - CONSULT THE AUTHORITY HAVING JURISDICTION (AHJ) TO VERIFY THE RECOMMENDED MOUNTING HEIGHT ABOVE THE FINISHED FLOOR (AFF). LIMITATIONS IN THE DOOR CONSTRUCTION PROCESS MAY REQUIRE SOME HOLES TO BE FIELD-LOCATED USING THE PHYSICAL PART AS A TEMPLATE. STANDARD TOLERANCE OF  $\pm .015$  APPLIES TO ALL DOOR PREPARATION REQUIREMENTS, UNLESS OTHERWISE SPECIFIED.
  - DOOR REINFORCEMENT IS RECOMMENDED TO IMPROVE (SURFACE MOUNTED) FASTENER HOLDING POWER AND CRUSH RESISTANCE (WHEN THRU-BOLTING IS EMPLOYED). CONSTRUCTION TECHNIQUES SHOULD REFLECT INDUSTRY BEST PRACTICES (I.E. WDMA, SDI) AND AUTHORIZED METHODS WHERE LABEL SERVICE (I.E. UL, W-H) IS IN EFFECT.
  - WIRE RACEWAY AREAS SHALL BE FREE OF OBSTRUCTIONS & SHARP EDGES TO PROTECT WIRES FROM CUTS & ABRASIONS.
  - CAREFULLY NOTE WHICH FEATURES ARE OPTIONAL, (WHETHER THE FEATURE APPLIES TO BOTH SIDES OF THE DOOR AND/OR IF A DEPTH APPLIES.)
  - MAXIMUM PRODUCT DIMENSIONS ARE SHOWN FOR THE PURPOSE OF VERIFYING FITMENT WITH DOOR FRAME STOPS, DOOR STILE SIZE & LIGHT/LOUVER KITS. IF OPTIONAL LEVERS OR ROSES ARE USED REFERENCE THE RELATED PRODUCT DIMENSIONS TO VERIFY THE FITMENT REQUIREMENTS.
  - SEE TEMPLATE MEDT4 (METAL DOORS) & MEDT33 (WOOD DOORS) FOR EXIT DEVICE & ROD LATCH PREP.



**AUTHORIZED OPTIONS**

IN100, IN120, IN 220

OPTIONS TABLE			
OPTION	DESCRIPTION	USED FOR OPTIONS	
		91- / M35	ALL OTHERS
A	HARD WIRE	X	-
		IN220	ALL OTHERS
B	POWER OVER ETHERNET	X	-

BACKSET DEFINITION		DOOR HANDING		
BACKSET		L.H.	INSIDE	R.H.
TOP OF DOOR VERTICAL $\phi$		OUTSIDE		
$\phi$ OF BEVEL		INSIDE		
		L.H.R.B.	OUTSIDE	R.H.R.B.

**ASSA ABLOY**  
Opening Solutions

DOOR MANUFACTURERS TEMPLATE: IN SERIES TRIM (STD. ON-CENTER) WOOD DOOR CVR EXIT DEVICE

RELEASE DATE: 10/16/2023

TEMPLATE NO.: MEDT68\_3

SHEET 4 OF 4