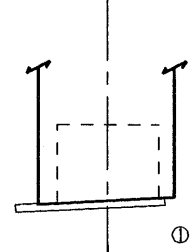
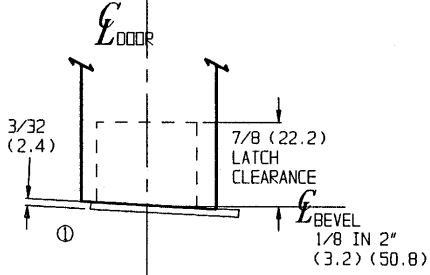
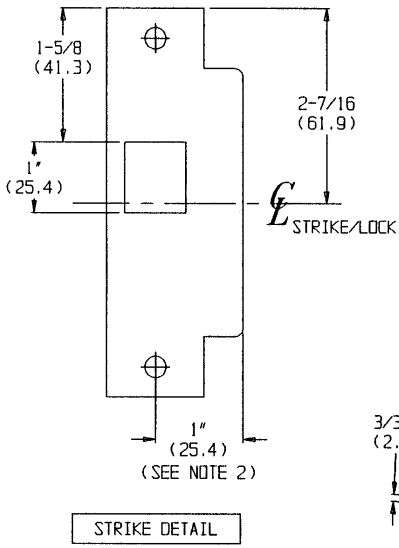


TEMPLATE CROSS REFERENCE

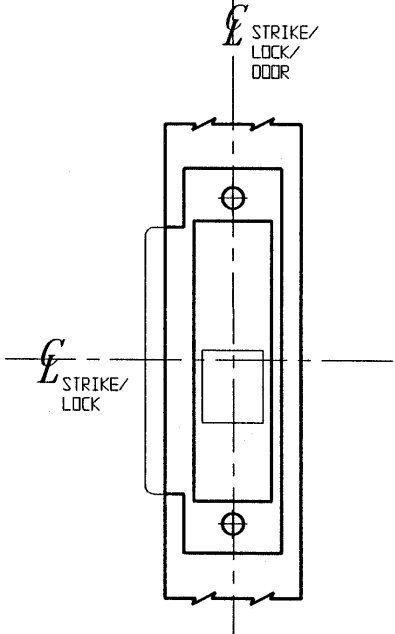
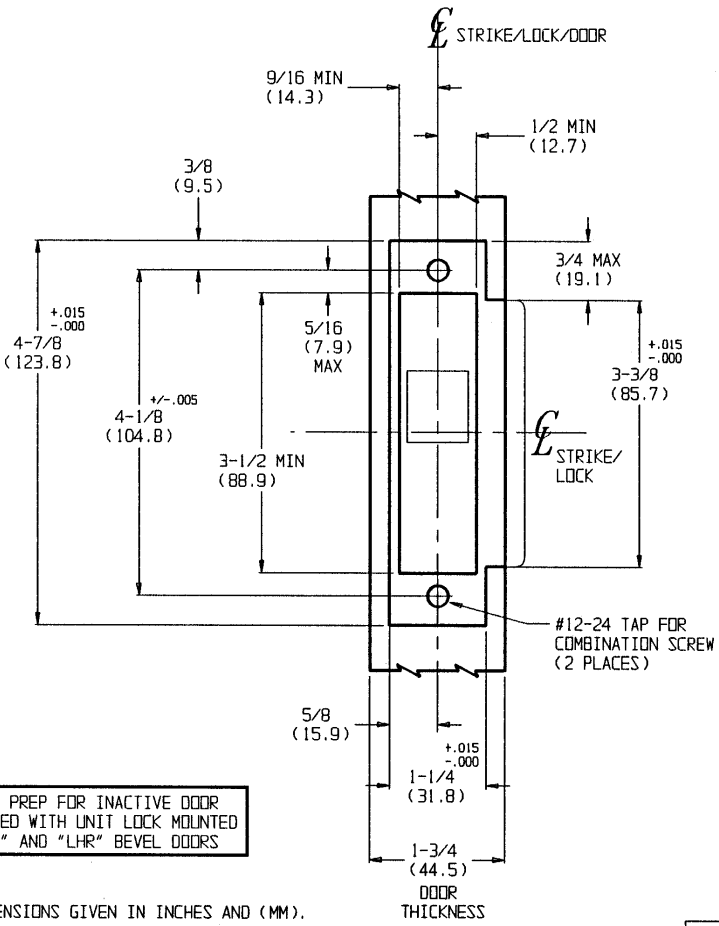
DESCRIPTION	TEMPLATE
UTS200 SERIES UNIT LOCK	T30495
82L67 OPTIONAL STRIKE - DOUBLE DOORS	T30499

DOUBLE DOOR APPLICATIONS ONLY



STRIKE DETAIL

DOOR DETAIL



STRIKE PREP FOR INACTIVE DOOR WHEN USED WITH UNIT LOCK MOUNTED ON "RH" AND "LHR" BEVEL DOORS

STRIKE PREP FOR INACTIVE DOOR WHEN USED WITH UNIT LOCK MOUNTED ON "LH" AND "RHR" BEVEL DOORS
PREP SAME AS "RH" AND "LHR" DOORS EXCEPT OPPOSITE

- NOTES:
1. DIMENSIONS GIVEN IN INCHES AND (MM).
2. 1" STRIKE LIP SUITS 1-3/4" THICK DOOR.

TOLERANCES	
INCHES	(MM)
.005	(.127)
.015	(.381)

RESPONSIBILITY
Door and Frame Manufacturers are responsible for providing adequate construction or reinforcements for proper installation of hardware shown. All architectural builders hardware must be installed on properly reinforced doors and frames, regardless of the type, material, or method of construction.

SA136
610L44
ANSI STRIKE
FOR UTS200 SERIES
DOUBLE DOOR APPLICATION

Corbin Russwin
www.corbinrusswin.com

DO NOT SCALE DRAWING

SUPERSEDES T30639 OR. KJ

DATE 1-98 TEMPLATE NUMBER T30639-1