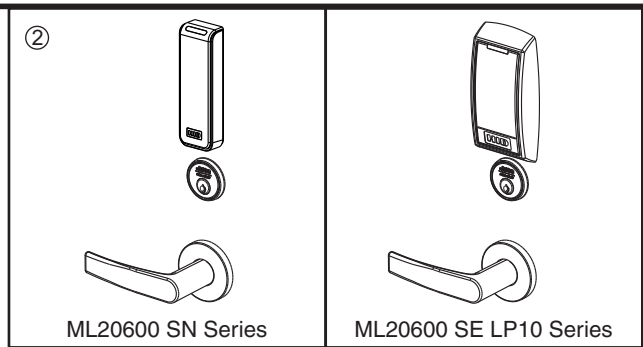


Notes:

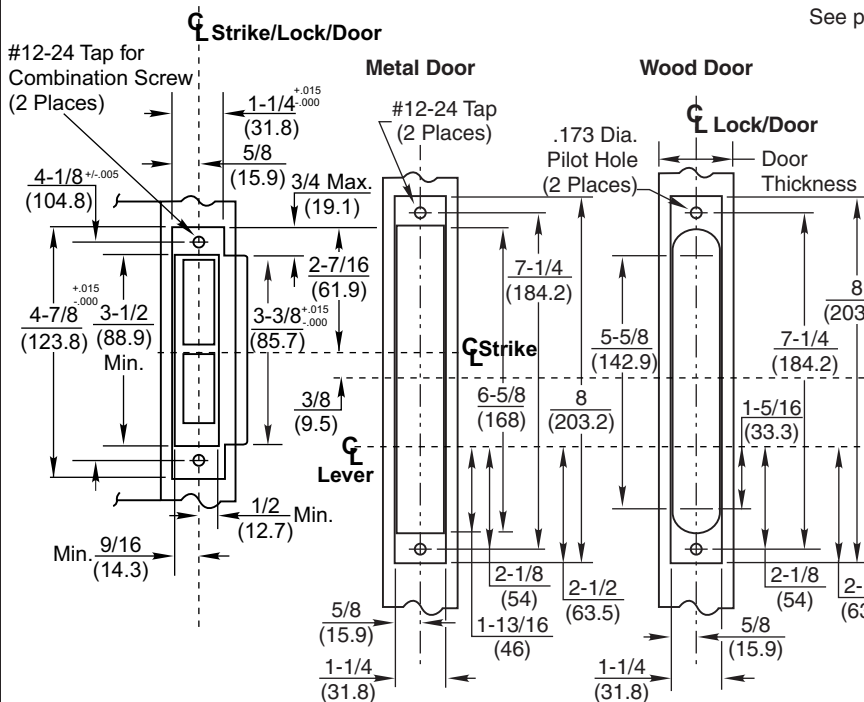
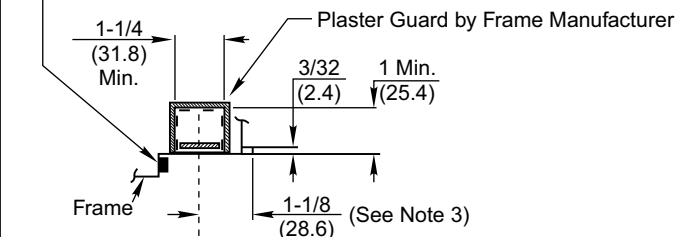
1. Backset is measured from centerline of bevel which is centerpoint of door thickness.
2. 1-1/8 (28.6) strike lip suits frame for 1-3/4 (44.5) thick door, lip will vary for other door thicknesses.
3. Dimensions given in inches and (mm).
4. Sheet 2 shows how prep details are affected by door handing.



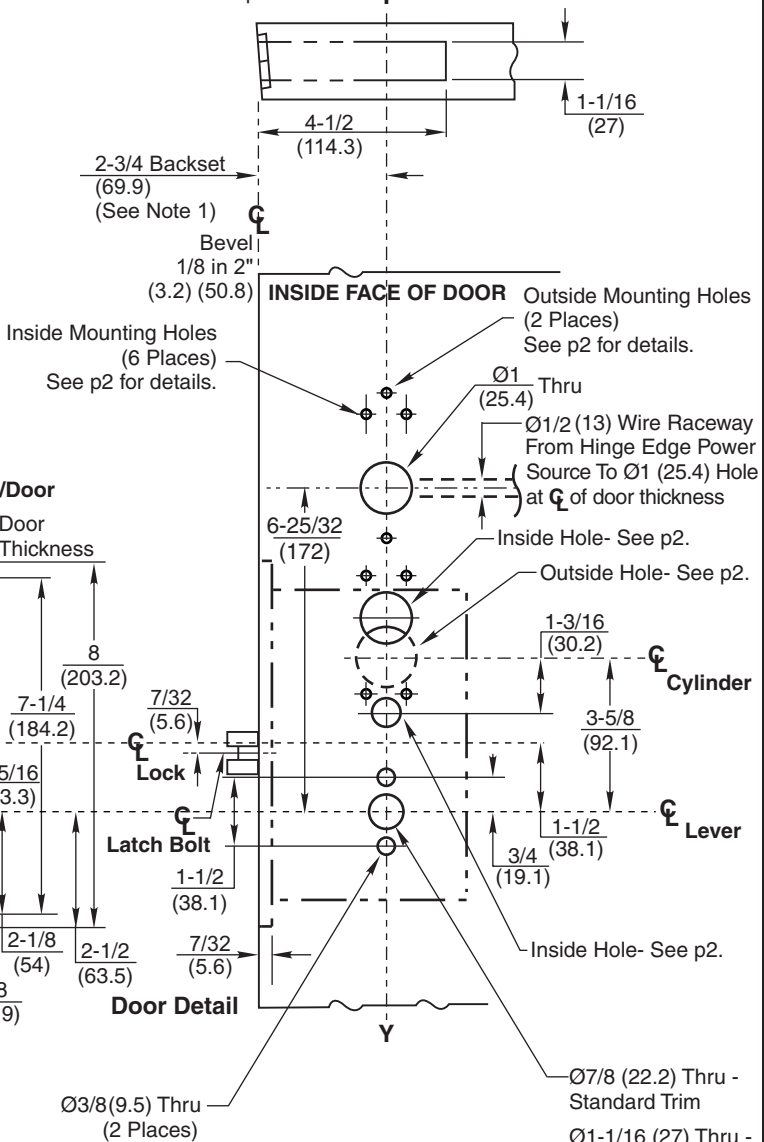
ML20600 SN Series

ML20600 SE LP10 Series

CAUTION: DOOR & FRAME MANUFACTURERS
 When door gasketing or silencers are used, proper allowances must be made for strike location to maintain a common centerline with lock and door as shown so that bolt will freely enter strike.



Line "Y-Y" corresponds to "Y-Y" on Trim Templates



Tolerances	
Inches	(mm)
.005	(.127)
.015	(.381)

RESPONSIBILITY
 DOOR AND FRAME MANUFACTURERS ARE RESPONSIBLE FOR PROVIDING ADEQUATE CONSTRUCTION OR REINFORCEMENTS FOR PROPER INSTALLATION OF HARDWARE SHOWN. ALL ARCHITECTURAL BUILDERS HARDWARE MUST BE INSTALLED ON PROPERLY REINFORCED DOORS AND FRAMES, REGARDLESS OF TYPE, MATERIAL, OR METHOD OF CONSTRUCTION.

**SE LP10, SN200/210
 ML20600 Series
 Mortise Lock**



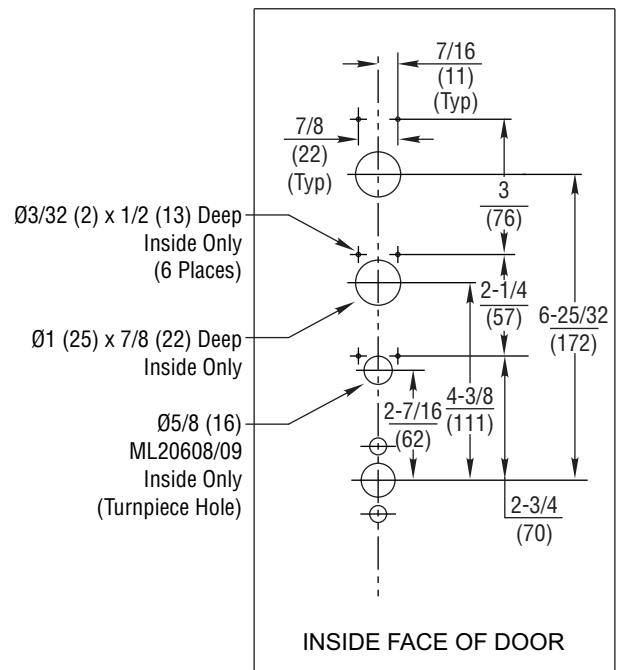
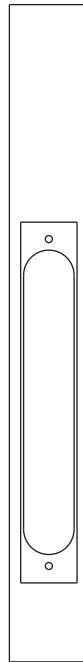
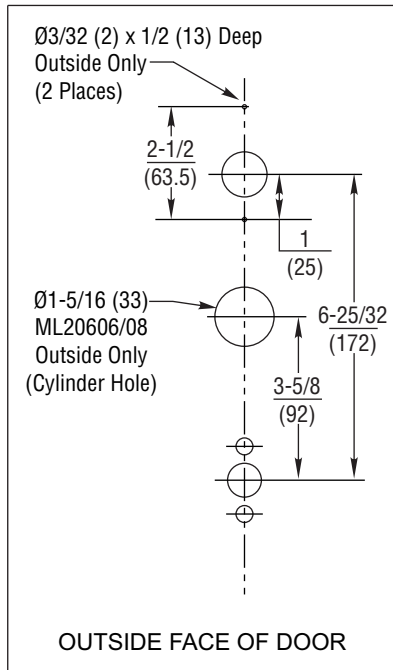
www.corbinrusswin.com

SUPERSEDES T31213-1 DO NOT SCALE DRAWING
 TEMPLATE NUMBER T31213-2 SHEET 1 of 2 DATE 12/20

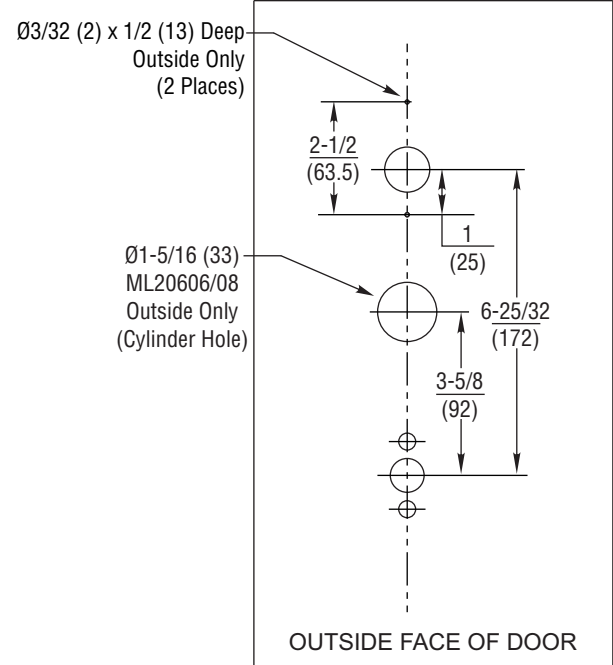
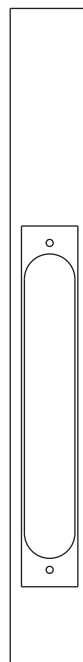
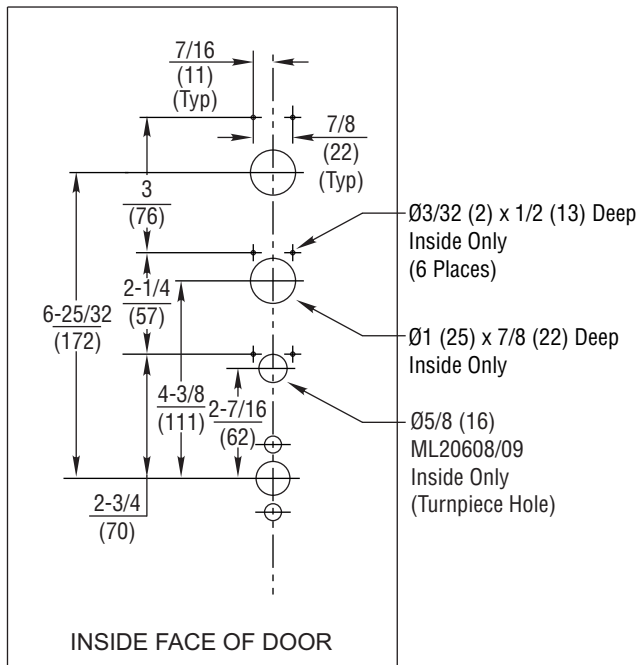
Experience a safer and more open world

Muséo™ is a trademark of ASSA ABLOY Access and Egress Hardware Group, Inc. Copyright © 2016, 2020 ASSA ABLOY Access and Egress Hardware Group, Inc. All rights reserved. Reproduction in whole or in part without the express written permission of ASSA ABLOY Access and Egress Hardware Group, Inc. is prohibited.

LH/LHR DOORS



RH/RHR DOORS



RESPONSIBILITY

DOOR AND FRAME MANUFACTURERS ARE RESPONSIBLE FOR PROVIDING ADEQUATE CONSTRUCTION OR REINFORCEMENTS FOR PROPER INSTALLATION OF HARDWARE SHOWN. ALL ARCHITECTURAL BUILDERS HARDWARE MUST BE INSTALLED ON PROPERLY REINFORCED DOORS AND FRAMES, REGARDLESS OF TYPE, MATERIAL, OR METHOD OF CONSTRUCTION.

SE LP10, SN200/210 ML20600 Series Mortise Lock

**Corbin
Russwin**
ASSA ABLOY

www.corbinrusswin.com

SUPERSEDES	T31213-1	DO NOT SCALE DRAWING
TEMPLATE NUMBER	T31213-2	SHEET
		DATE
		12/20

Experience a safer and more open world

Muséo™ is a trademark of ASSA ABLOY Access and Egress Hardware Group, Inc. Copyright © 2016, 2020 ASSA ABLOY Access and Egress Hardware Group, Inc. All rights reserved. Reproduction in whole or in part without the express written permission of ASSA ABLOY Access and Egress Hardware Group, Inc. is prohibited.