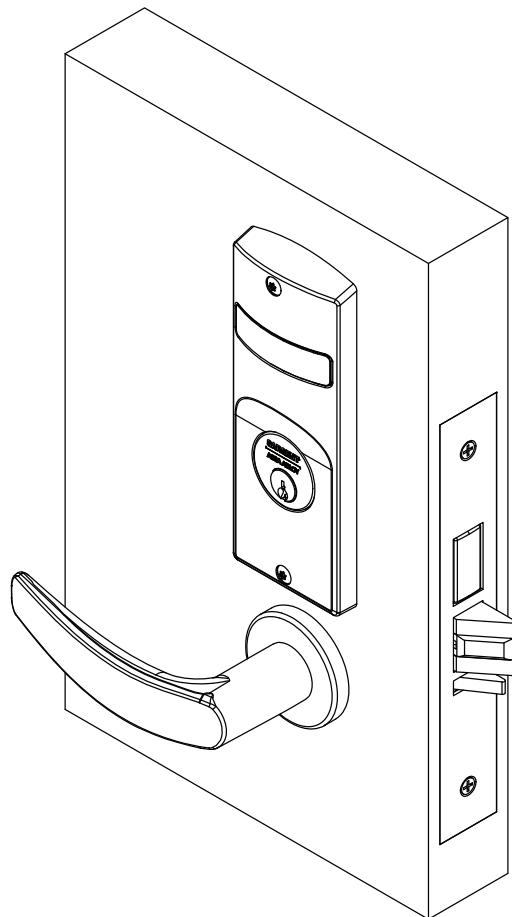


# MP6600 Series

Used with Sectional Trim and V Series Indicators  
Multi-Point Lock



**⚠ WARNING**

This product can expose you to lead which is known to the state of California to cause cancer and birth defects or other reproductive harm. For more information go to [www.P65warnings.ca.gov](http://www.P65warnings.ca.gov).

# MP6600 Series Multi-Point Lock

Used with Sectional Trim and V Series Indicators



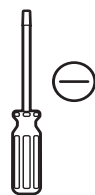
ASSA ABLOY

## Installation Instructions

<b>TOC</b>	<b>Table of Contents</b>
<b>1</b>	<b>Tools Required .....2</b>
<b>2</b>	<b>Indicator Variants.....3</b>
<b>3</b>	<b>Lock set configuration .....3</b>
<b>4</b>	<b>Rehanding Indicator (if required).....3</b>
<b>5</b>	<b>Installation .....4</b>
<b>a</b>	<b>Prepare Door for Mortise Lock .....4</b>
<b>b</b>	<b>Install Lock .....4</b>
<b>c</b>	<b>Prepare Door for Indicator.....4</b>
<b>d</b>	<b>Install Levers .....5</b>
<b>e</b>	<b>Install Indicator Mounting Plate.....5</b>
<b>f</b>	<b>Install Indicator Assembly .....5</b>
<b>g</b>	<b>Install Cylinder .....6</b>
<b>h</b>	<b>Install Outside Front .....6</b>
<b>i</b>	<b>Perform Functional Check .....6</b>
<b>6</b>	<b>Indicator Parts List.....7</b>
<b>1</b>	<b>Tools Required</b>



#2 & #3 Phillips head screwdrivers



Flat blade screwdriver



1/8" Allen Wrench



3/32" Drill bit



T-20 Torx Screw with Tamper Pin Driver

# MP6600 Series Multi-Point Lock

Used with Sectional Trim and V Series Indicators



ASSA ABLOY

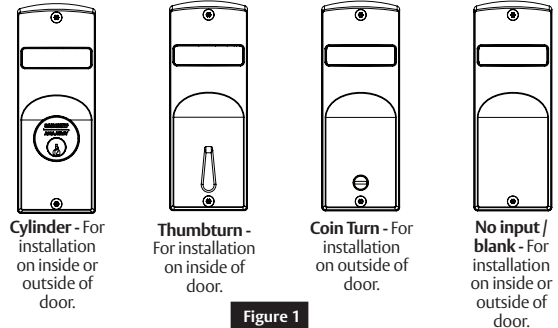
## Installation Instructions

2

### Indicator Variants

Depending on function and option ordered, indicators are provided in the following variations, these instructions detail how to install with cylinder, however other variations follow similar instructions. (Figure 1)

Contact factory for any questions.



3

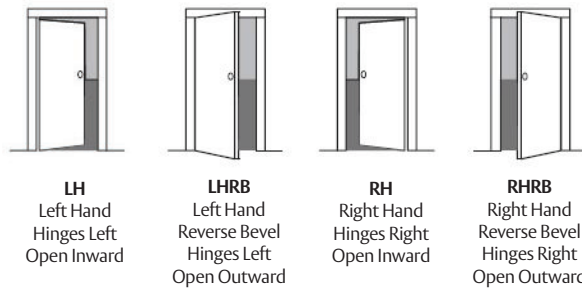
### Lock set configuration

To set function of multi-function lock or to re-hand, see instructions on lock body.

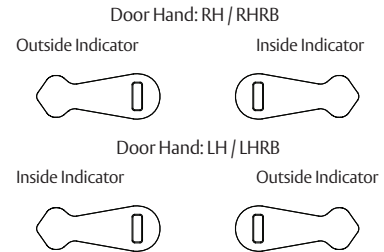
4

### Rehanding Indicator (if required)

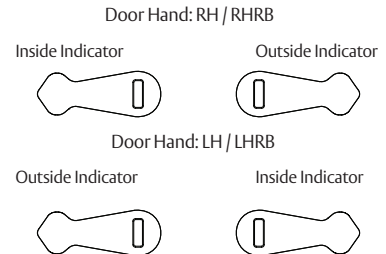
Verify hand and bevel of door. (Figure 2)



Spindle Cam Position for Locks with Deadbolt (\*and 56 function)



Spindle Cam Position for Locks without Deadbolt (\*except 56 function)



#### Note:

Stand on outside of locked door when determining door hand.

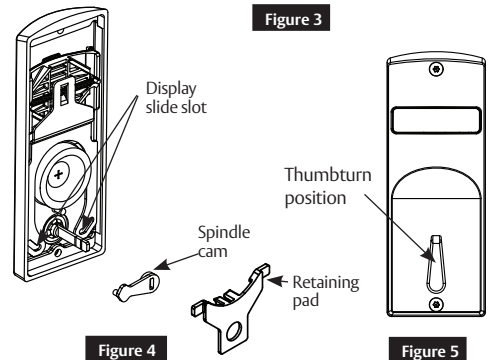
Next, verify inside and/or outside indicators are handed correctly, using Spindle Cam Position chart. (Figure 3) If they are handed correctly, skip to Step 5 "Prepare Door".

If they are not handed correctly:

1. Remove retaining pad and spindle cam from assembly. (Figure 4)
2. Position spindle cam in correct direction for door hand. (Figure 3)

#### Important:

- For thumbturn indicators, make sure thumbturn is positioned in the 12 o'clock direction as shown. (Figure 5)
3. Slide spindle cam post into correct slot of display slide. (Figure 4)
  4. Re-seat retaining pad into original position.
  5. Return indicator to the vacant/unlocked position for installation.



## 5

### Installation

#### a

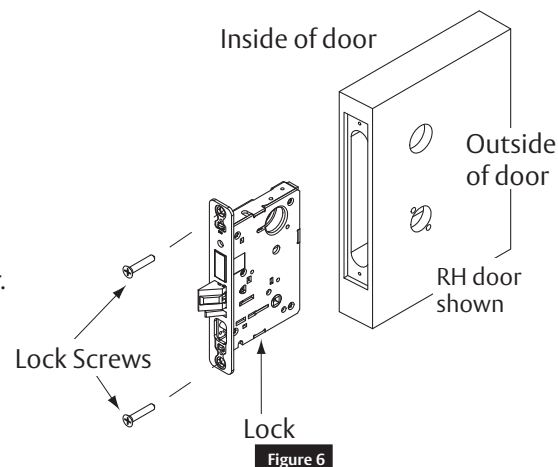
#### Prepare Door for Mortise Lock

Prepare door for function holes, size, and location according to FM449 door marker template, if not already prepped.

#### b

#### Install Lock

1. Verify strike location according to template. Clean out door pocket and door edge of debris.
2. Make sure handing of lock matches handing of door. Slide lock into door. (Figure 6)
3. Temporarily hand tighten two (2) lock screws (#12 x 1-1/4" wood screws, or #12-24 x 1/2" machine screws).



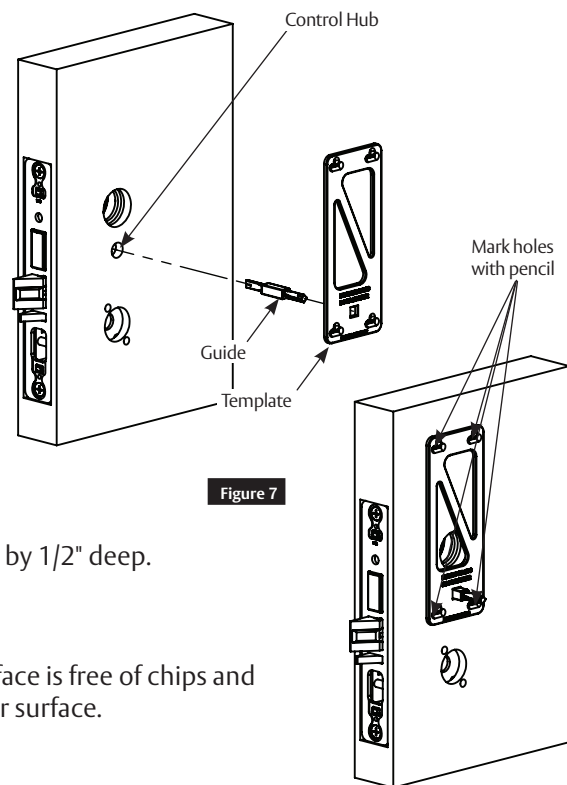
#### Notes:

- Keep door open until installation is complete.
- If installing lever onto only one (1) side of door (36 function), see separate instruction sheet A7028.

#### c

#### Prepare Door for Indicator

1. Insert template guide into control hub on side where indicator will be used. (Figure 7)
  2. Slide indicator template over template guide.
- Important:** Make sure the template is properly centered and aligned to ensure smooth indicator operation.
3. Mark the four (4) hole positions indicated on template.
  4. Remove guide and template.
  5. If indicators are being used on both sides of door, repeat steps 1 through 4 for opposite side.
  6. Remove lock body.
  7. Drill four (4) marked holes with 3/32" diameter bit, by 1/2" deep.
  8. Reinstall lock body and hand tighten screws.



#### Note:

If retrofitting over an existing product, ensure door surface is free of chips and debris around holes so indicator will sit flat against door surface.

# MP6600 Series Multi-Point Lock

Used with Sectional Trim and V Series Indicators

Corbin  
Russwin

ASSA ABLOY

## Installation Instructions

5

### Installation (cont.)

d

#### Install Levers

1. Slide outside lever and rose assembly through door and lock body, and hold. (Figure 8)
2. Slide inside spindle into lock body hub.
3. Slide adapter and plate assembly over spindle.
4. Secure with two (2) #8-32 x 5/8" screws.
5. Install inside rose onto adapter plate.
6. Install inside lever on adapter plate. Secure with set screw.

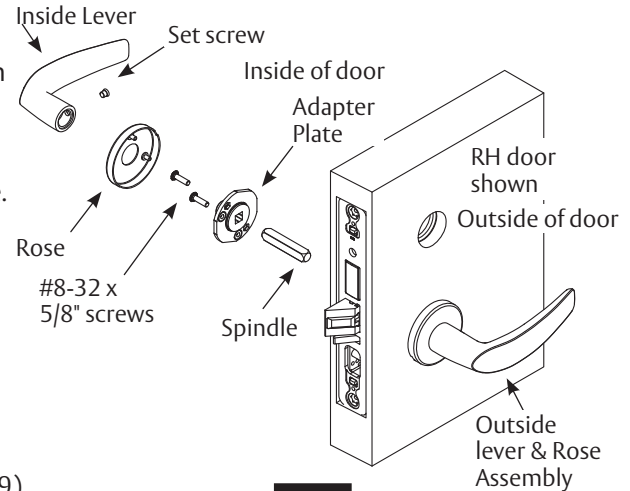


Figure 8

e

#### Install Indicator Mounting Plate

1. Screw indicator mounting plate to door with four (4) #6 x 3/8" sheet metal screws. (Figure 9)
2. If indicators are being used on both sides of door, repeat step 1 for opposite side.

f

#### Install Indicator Assembly

1. Verify lock is in unlocked state (turn outside lever to confirm).
2. Verify indicator is in vacant/unlocked position.
3. Assemble indicator assembly onto mounting plate. (Figure 10)
4. Secure indicator assembly to door with two (2) machine screws.
  - Use #8-32 x 5/8" screw for top
  - Use #8-32 x 3/8" screw for bottom
5. If indicators are being used on both sides of door, repeat steps 1 through 3 for opposite side.

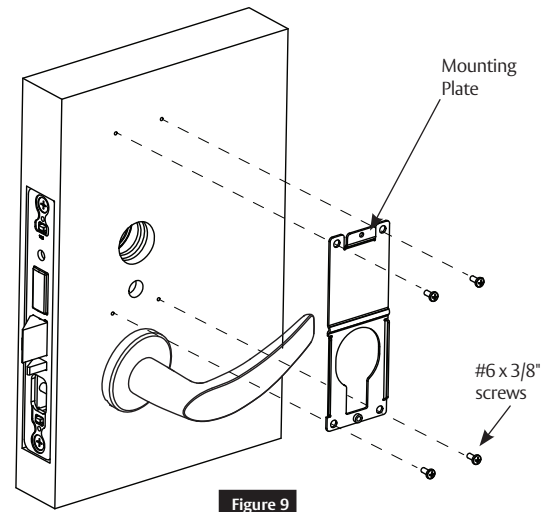


Figure 9

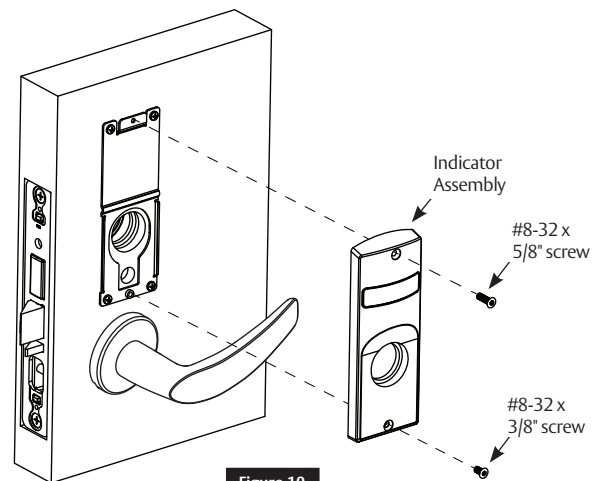


Figure 10

#### Note:

Torx security screws recommended.

## 5

### Installation (cont.)

#### g

### Install Cylinder

- Thread cylinder into lock until flush with escutcheon surface. (Figure 11)
  - Pull key slightly out of cylinder to help thread into lock body.
- Tighten cylinder clamp screw with #2 Phillips screwdriver.
  - Check operation and adjust if necessary.

#### Notes:

- SARGENT logo must be horizontal and on top. (Figure 12)
- If double cylinder function is used, repeat steps 1 and 2 for second cylinder.
- Removable Core or Interchangeable Core cylinders require a control key (key stamped with C) to remove and install the core. This is not provided standard; it must be requested separately. If requesting 1-bitted control key, specify 113511 cut.

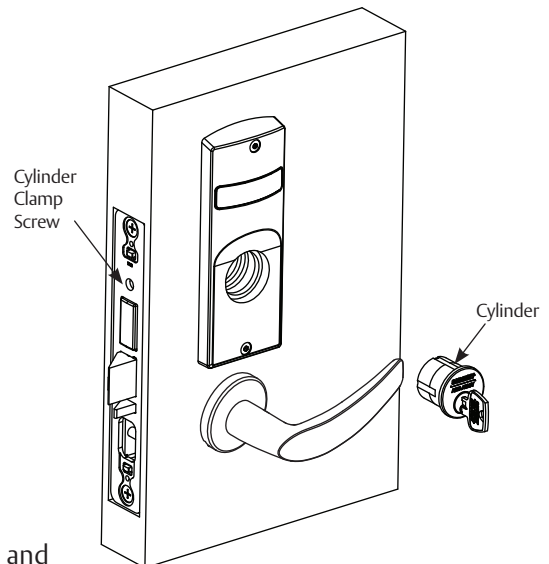


Figure 11

Key and cylinder must be rotated as shown.

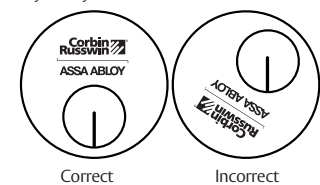


Figure 12

#### h

### Install Outside Front

- Tighten the two (2) lock screws completely: (Figure 13)
- Attach outside front with two (2) flat head screws #8-32 x 1/4".

#### i

### Perform Functional Check

DO NOT FORCE if resistance is encountered during functional check. Refer back to Rehandling Indicator (if required) section to ensure correct handing. Rehand if necessary.

- Insert key into cylinder (if present) and rotate:
  - Ensure there is no friction against lock case or any other obstructions.
- Check key retracts latch:
  - Key should rotate freely.
- Throw deadbolt (if present):
  - Check key retracts both deadbolt and latch.
- Test levers:
  - Confirm latch and deadbolt (if installed) retract.
- Verify indicator displays correct status when locked and unlocked.

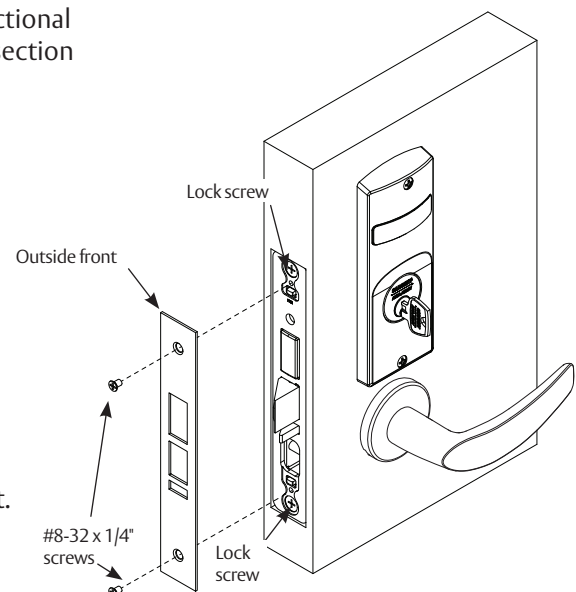


Figure 13

# MP6600 Series Multi-Point Lock

Used with Sectional Trim and V Series Indicators



ASSA ABLOY

## Installation Instructions

6

### Indicator Parts List

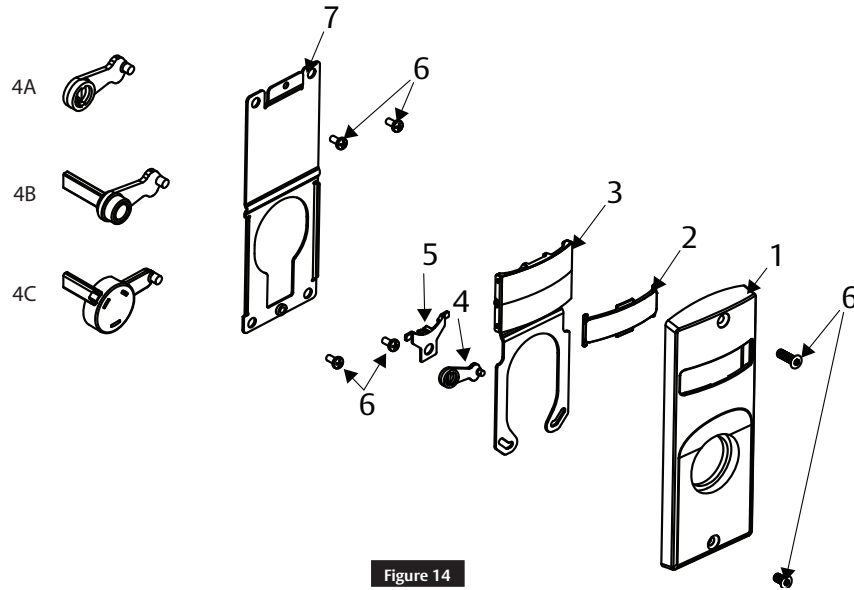


Figure 14

Figure 14	Description	Req.
1	Sectional Escutcheon - Cylinder	1
	Sectional Escutcheon - Coin Turn	
	Sectional Escutcheon - Thumbturn (Standard)	
	Sectional Escutcheon - Thumbturn (LB Option)	
	Sectional Escutcheon - Thumbturn (T1)	
	Sectional Escutcheon - Thumbturn (T2)	
	Sectional Escutcheon - Thumbturn (T3)	
	Sectional Escutcheon - No Input/Blank	
2	Indicator Window	1
3	Indicator Display Assembly - Green Unlocked / Red Locked	1
	Indicator Display Assembly - Green Vacant / Red Occupied	
	Indicator Display Assembly - Green Unlocked Icon / Red Locked Icon	
	Indicator Display Assembly - White Unlocked / Red Locked	
	Indicator Display Assembly - White Vacant / Red Occupied	
	Indicator Display Assembly - White Unlocked Icon / Red Locked Icon	
4A	Indicator Spindle Cam - Thumbturn/Coin Turn	1
4B	Indicator Spindle Cam - Cylinder/No Input / Blank	
4C	Indicator Spindle Cam - 38/59 Function	
5	Indicator Retaining Pad	1
6	Sectional Indicator Screw Pack	1
7	Sectional Indicator Mounting Plate	1
8	Sectional Indicator Template Kit (not shown)	1

\* These parts are for 1-3/4" standard thickness doors. For other thicknesses, please contact factory.

The ASSA ABLOY Group is the global leader in access solutions. Every day, we help billions of people experience a more open world.

ASSA ABLOY Opening Solutions leads the development within door openings and products for access solutions in homes, businesses and institutions. Our offering includes doors, frames, door and window hardware, locks, perimeter fencing, access control and service.



**ASSA ABLOY**

Corbin Russwin  
225 Episcopal Road  
Berlin, CT 06037 USA  
Phone: 800-543-3558

Corbin Russwin is a brand associated with ASSA ABLOY Access and Egress Hardware Group, Inc., an ASSA ABLOY Group company. Copyright © 2020, ASSA ABLOY Access and Egress Hardware Group, Inc. All rights reserved. Reproduction in whole or in part without the express written permission of ASSA ABLOY Access and Egress Hardware Group, Inc. is prohibited.

For installation assistance contact Corbin Russwin  
1-800-543-3658 • [techsupport.corbinrusswin@assaabloy.com](mailto:techsupport.corbinrusswin@assaabloy.com)

FM555 08/20