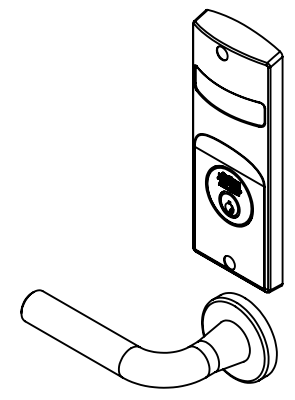


Notes:

1. Backset is measured from centerline of bevel which is centerpoint of door thickness.
2. (\*) When preparing doors for lead wrapped locks, add 1/8 (3.2) to dimensions marked (\*) to allow proper clearance.
3. 1-1/8 (28.6) strike lip suits frame for 1-3/4 (44.5) thick door, lip will vary for other door thicknesses.
4. For open back strike, refer to template T30606.
5. Dimensions given in inches and (mm).

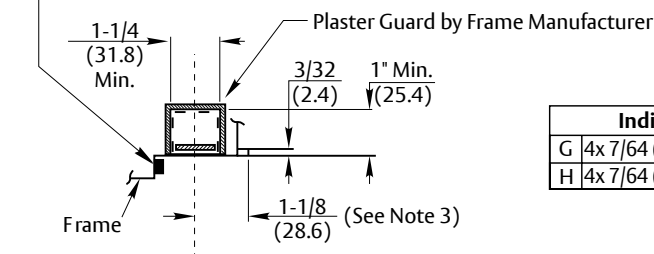
③

Function	Required Holes							
	A	B	C	D	E	F	G	H
ML2002	X	X			X	X		
ML2003	X				X	X		
ML2004	X		X		X	X		
ML2011	X							
ML2012	X	X						
ML2013	X		X					
ML2017	X		X					
ML2020			X	X	X	X		
ML2022	X	X			X	X		
ML2024	X	X			X	X		
ML2029	X	X			X	X		
ML2030			X	X	X	X		
ML2040			X		X	X		
ML2048	X	X			X	X		
ML2049	X	X			X	X		
ML2059	X				X	X		
ML2060			X	X	X	X		
ML2062	X	X			X	X		
ML2065	X	X			X	X		
ML2067	X	X			X	X		
ML2068	X	X			X	X		
ML2069	X	X			X	X		
ML2072	X	X			X	X		
ML2073	X				X	X		
ML2075	X	X			X	X		
ML2082	X	X			X	X		
ML2092	X	X			X	X		
ML20608	X	X			X	X		
ML20609		X			X	X		
Vx0 (Indicator Outside)				X				X
V0x (Indicator Inside)							X	
Vxx (Indicator Both Sides)			X	X			X	X



ML2000 Series  
Vxx Sectional Trim Indicator

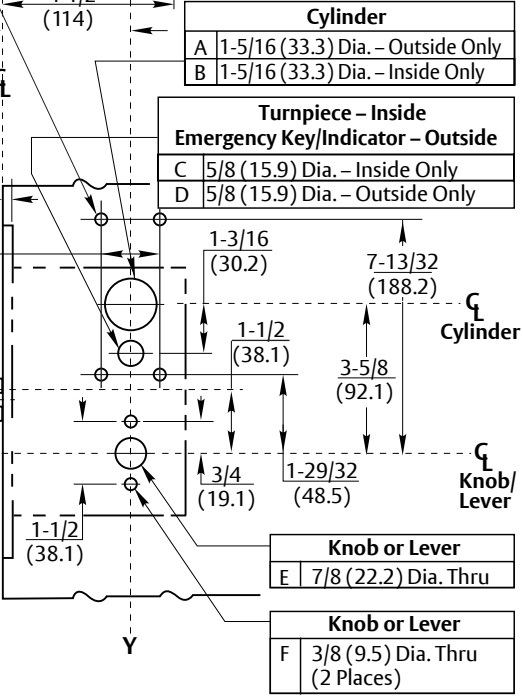
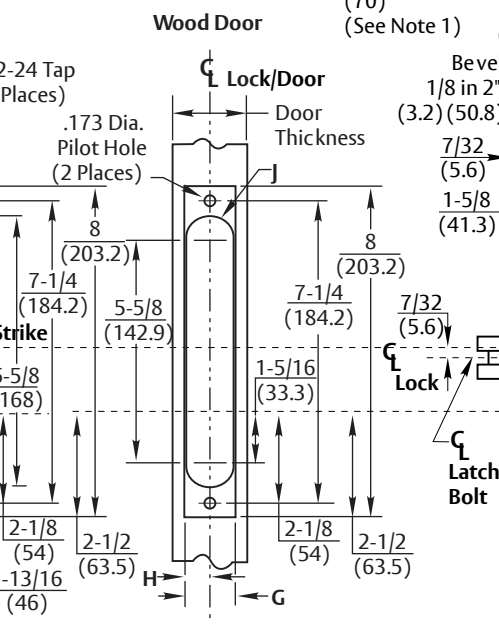
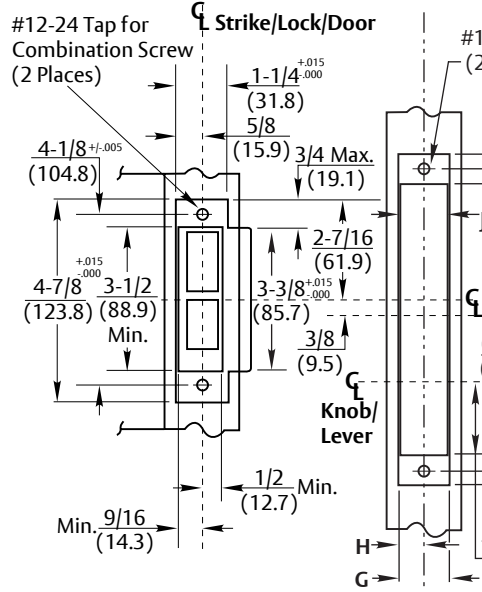
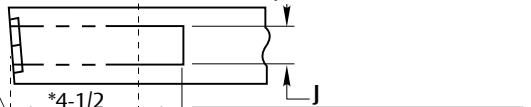
**CAUTION: DOOR & FRAME MANUFACTURERS**  
When door gasketing or silencers are used, proper allowances must be made for strike location to maintain a common centerline with lock and door as shown so that bolt will freely enter strike.



\*x Denotes indicator window option code

Line "Y-Y" corresponds to "Y-Y" on Trim Templates

Indicator Mounting	
G	4x 7/64 (2.8) Dia. - Inside Only
H	4x 7/64 (2.8) Dia. - Outside Only



FRAME DETAIL	
ANSI Strike	Description
236L72	Latch & Dead Bolt Holes
236L73	Latch Bolt Hole Only
236L74	Dead Bolt Hole Only
And Optional Box 120F76	

G	H	J	Door Thickness
1-1/4 (31.8)	5/8 (15.9)	1-1/16 (27)	1-3/4 Min. (44.5) Standard
1-1/16 (27)	17/32 (13.5)	1-1/32 (26.2)	1-3/8 Min. (34.9) Optional

Tolerances	
Inches	(mm)
.005	(.127)
.015	(.381)

**RESPONSIBILITY**  
DOOR AND FRAME MANUFACTURERS ARE RESPONSIBLE FOR PROVIDING ADEQUATE CONSTRUCTION OR REINFORCEMENTS FOR PROPER INSTALLATION OF HARDWARE SHOWN. ALL ARCHITECTURAL BUILDERS HARDWARE MUST BE INSTALLED ON PROPERLY REINFORCED DOORS AND FRAMES, REGARDLESS OF TYPE, MATERIAL, OR METHOD OF CONSTRUCTION.

**ML2000 Series  
Mortise Lock with Visual Indicator  
Used with Vxx Option for Sectional Trim**



www.corbinrusswin.com

SUPERSEDES	T31249-2	DO NOT SCALE DRAWING
TEMPLATE NUMBER	T31249-3	SHEET 1 of 1 DATE 03/23

Experience a safer and more open world

Copyright © 2019, 2021, 2023 ASSA ABLOY Access and Egress Hardware Group, Inc. All rights reserved. Reproduction in whole or in part without the express written permission of ASSA ABLOY Access and Egress Hardware Group, Inc. is prohibited.