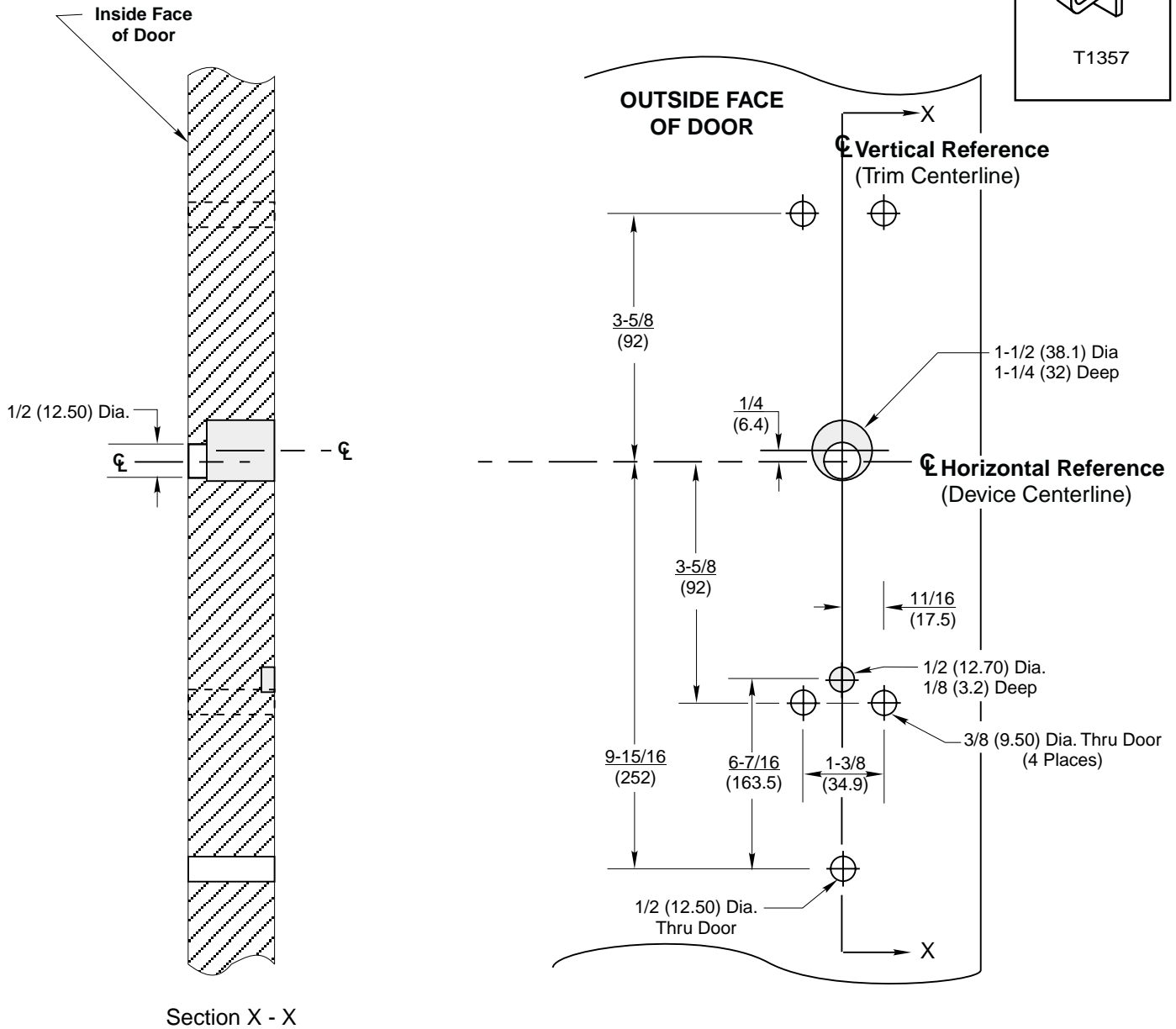
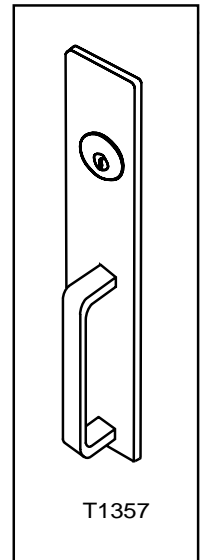


**Notes:**

1. This template is an addition to the device template. Locate centerlines using horizontal and vertical references on device template.
2. Do not scale drawing.
3. Dimensions are in inches (mm).
4. LHR door shown. Preparation is typical for both door hands.
5. Provide adequate internal support to maintain door integrity during operation.
6. Prepare mounting holes when installing trim.
7. Dimensions given about a centerline are symmetrical.



**T1357 Trim**  
 with ED5200, ED5400, or ED5800 Series  
 Rim and Vertical Rod Exit Devices  
**Wood or Composite Door Preparation**

**Corbin Russwin**<sup>®</sup>  
 www.corbinrusswin.com  
 SUPERSEDES T30860-1 DO NOT SCALE DRAWING  
 TEMPLATE NUMBER **T30860-2** DATE **8-99**