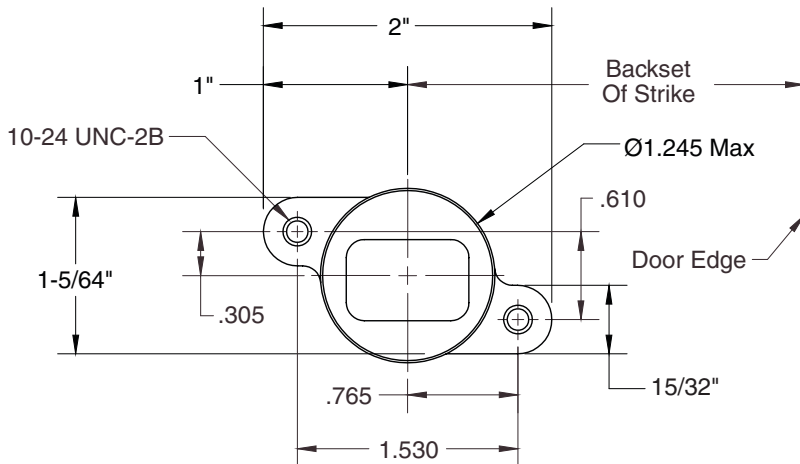
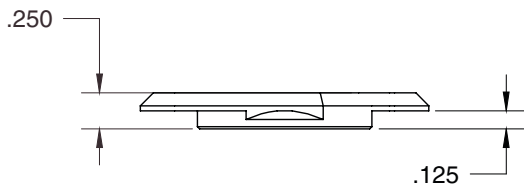
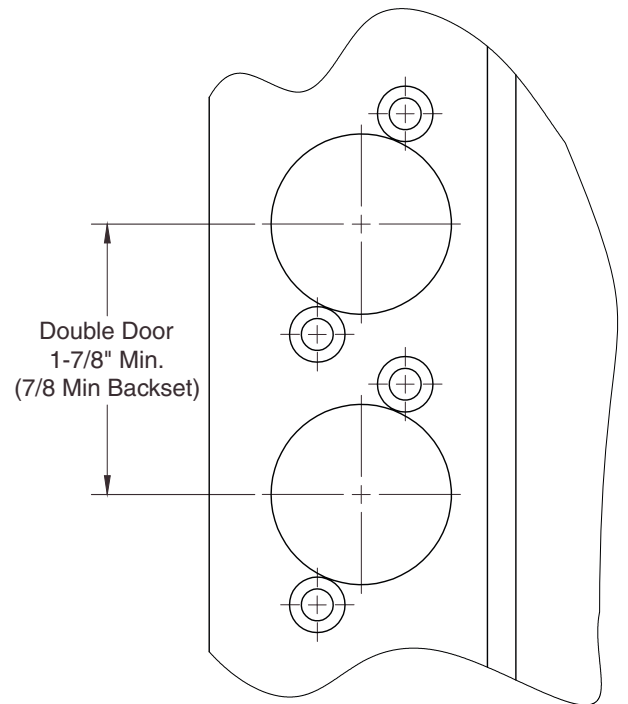
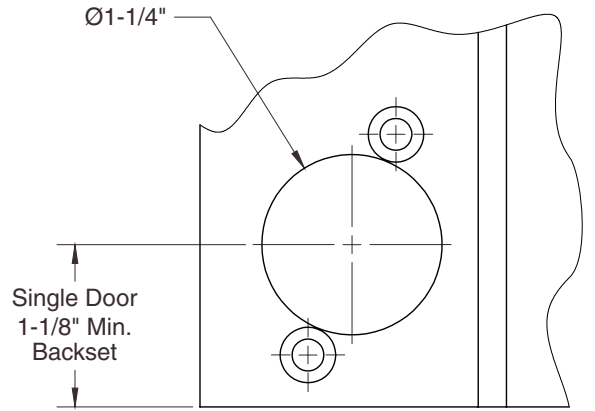


Use this dimension when door stops against frame as illustrated. If door silencers (rubber or felt bumpers) door panels or both are used, increase this dimension accordingly.



**NOTE:**  
Max backset of device is 2-3/4".  
Strike is centered on latchbolt  $\pm 1/8"$  for all device backsets.  
See header details for minimum backset information.



**NOTES:**

1. For bottom strike, prepare threshold as specified for frame header.
2. Tolerance on all dimensions  $\pm .015$  (1/64") unless otherwise specified.

**RESPONSIBILITY**

DOOR AND FRAME MANUFACTURERS ARE RESPONSIBLE FOR PROVIDING ADEQUATE CONSTRUCTION OR REINFORCEMENTS FOR PROPER INSTALLATION OF HARDWARE SHOWN. ALL ARCHITECTURAL BUILDERS HARDWARE MUST BE INSTALLED ON PROPERLY REINFORCED DOORS AND FRAMES, REGARDLESS OF TYPE, MATERIAL, OR METHOD OF CONSTRUCTION.

**MP9800 Series Multi-Point Locks  
Top and Bottom Strike  
Aluminum Door**



**ASSA ABLOY**

www.corbinruswin.com

SUPERSEDES	DO NOT SCALE DRAWING
TEMPLATE NUMBER	DATE
<b>T31244</b>	<b>08-16</b>