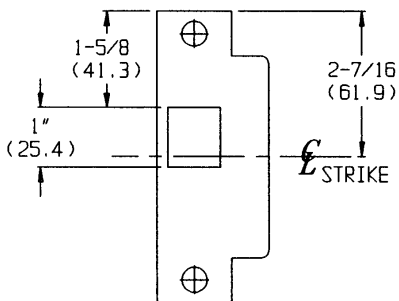


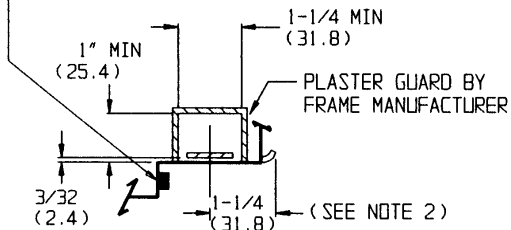
- NOTES:  
 1. DIMENSIONS GIVEN IN INCHES AND (MM).  
 2. 1-1/4" STRIKE LIP SUITS FRAME FOR 1-3/4" THICK DOOR.



STRIKE DETAIL

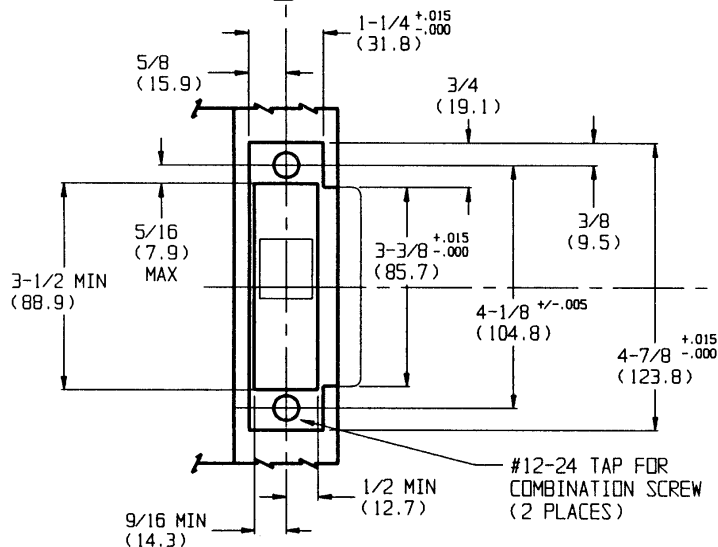
**CAUTION: DOOR AND FRAME MANUFACTURERS**

WHEN DOOR GASKETING OR SILENCERS ARE USED, PROPER ALLOWANCES MUST BE MADE FOR STRIKE LOCATION TO MAINTAIN A COMMON CENTERLINE WITH LOCK AND DOOR AS SHOWN SO THAT BOLT WILL FREELY ENTER STRIKE.



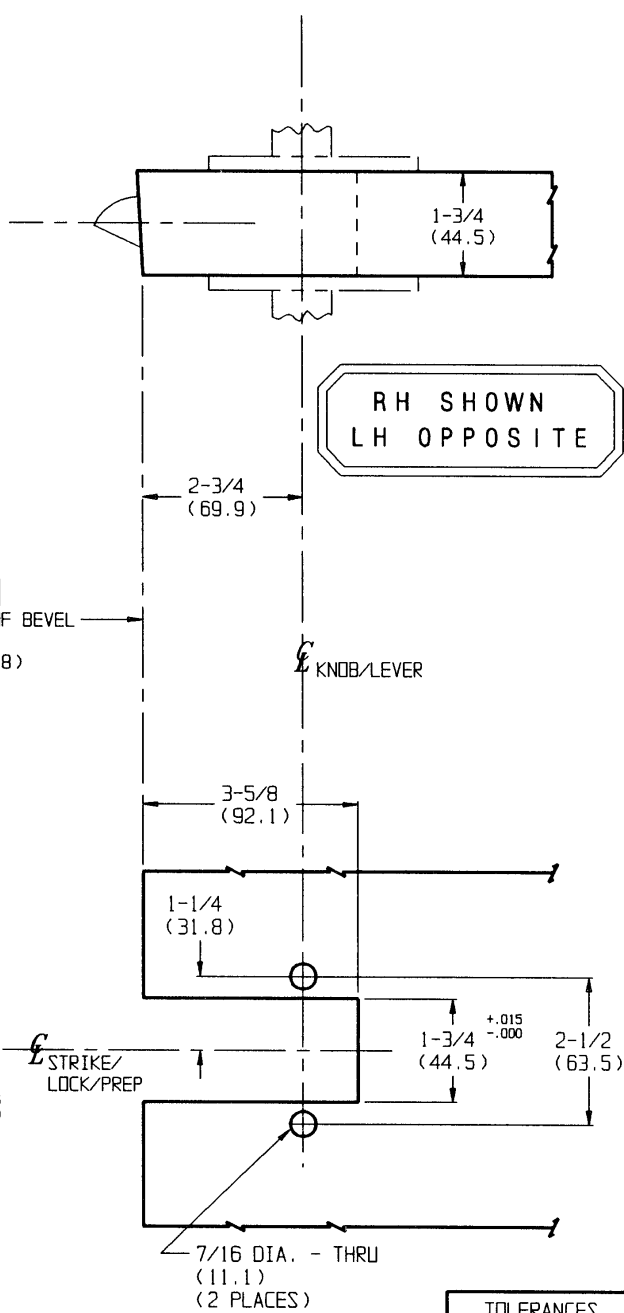
**CAUTION:**  
 LOW SIDE OF BEVEL  
 1/8 IN 2" (3.2) (50.8)

STRIKE/LOCK/DOOR



FRAME DETAIL  
 ANSI STRIKE 236L75  
 (REGULARLY FURNISHED)

| TEMPLATE CROSS REFERENCE              |          |
|---------------------------------------|----------|
| DESCRIPTION                           | TEMPLATE |
| 83L96 OPTIONAL STRIKE                 | T30497   |
| 610L44 ANSI STRIKE - DOUBLE DOORS     | T30639   |
| 82L67 OPTIONAL STRIKE - DOUBLE DOORS  | T30499   |
| UT5200 SERIES x M11 (ANSI STRIKE)     | T30638   |
| UT5200 SERIES x M11 (OPTIONAL STRIKE) | T30539   |



RH SHOWN  
 LH OPPOSITE

DOOR DETAIL

| TOLERANCES |        |
|------------|--------|
| INCHES     | (MM)   |
| .005       | (.127) |
| .015       | (.381) |

**RESPONSIBILITY**

Door and Frame Manufacturers are responsible for providing adequate construction or reinforcements for proper installation of hardware shown. All architectural builders hardware must be installed on properly reinforced doors and frames, regardless of the type, material, or method of construction.

**UT5200 SERIES**

UNIT LOCK



DO NOT SCALE DRAWING

|            |         |     |    |      |         |                 |        |
|------------|---------|-----|----|------|---------|-----------------|--------|
| SUPERSEDES | VT30186 | DR. | KJ | DATE | 5/25/93 | TEMPLATE NUMBER | T30495 |
|------------|---------|-----|----|------|---------|-----------------|--------|