

DORREXKIT-ED

INSERT INSTRUCTIONS

The Command Access DORREXKIT-ED is a field-installable Request to Exit switch for the Dorma 9000 series exit devices.

A.



B.



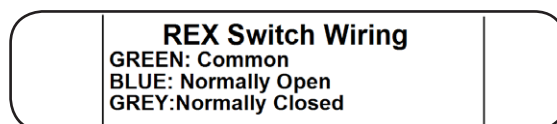
C.



D.



E.



KIT INCLUDES

- A. 60391 - DORREXKIT-ED
- B. 40058 - MACHINE SCREW 4-24 X 3/8"
- C. 40059 - CABLE TIE MOUNT
- D. 40060 - CABLE TIE
- E. 20015 - REX STICKR

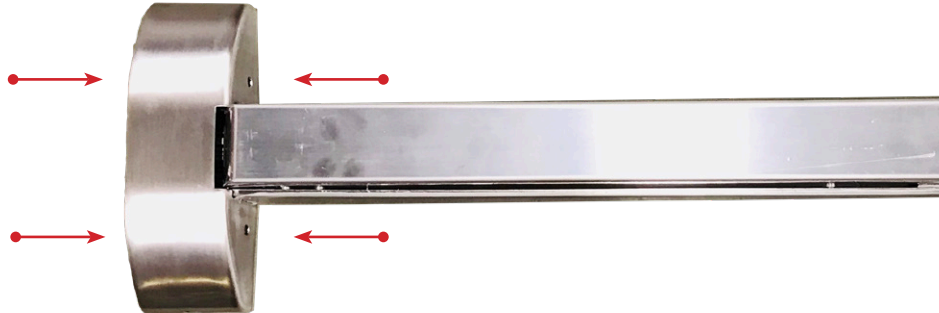
TOOLS REQUIRED

#2 PHILLIPS SCREWDRIVER

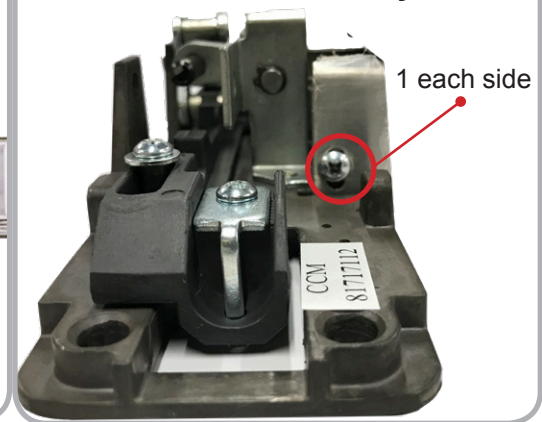
INSTALLATION INSTRUCTIONS

1 Remove **Head Cover** (4 screws) and **Head Assembly** (2 screws).

Head Cover

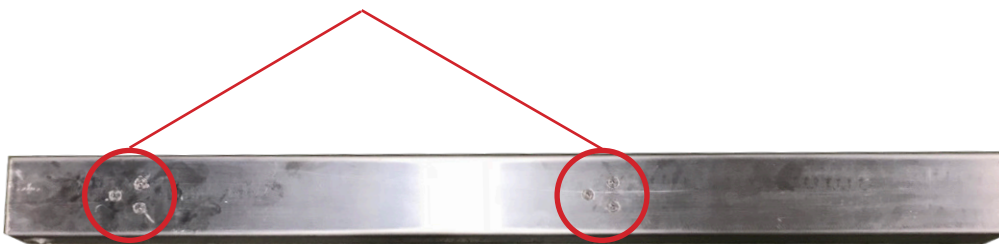


Head Assembly

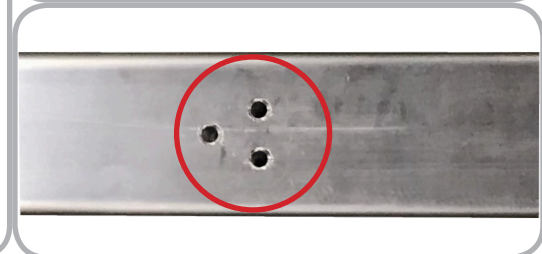
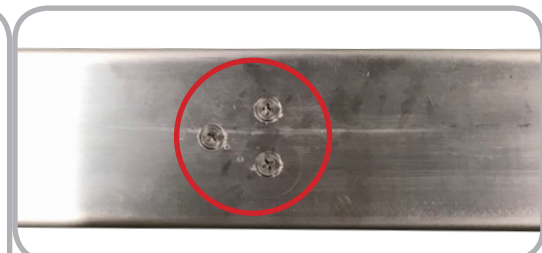


2 Flip the bar over and remove the **6 Screws** holding the Pushpad Assembly to the **Base Rail**.

6 Screws



Base Rail



3 Slide **Pushpad Assembly** and **Slide Cover** out of the **Base Rail**.

Pushpad Assembly



Slide Cover

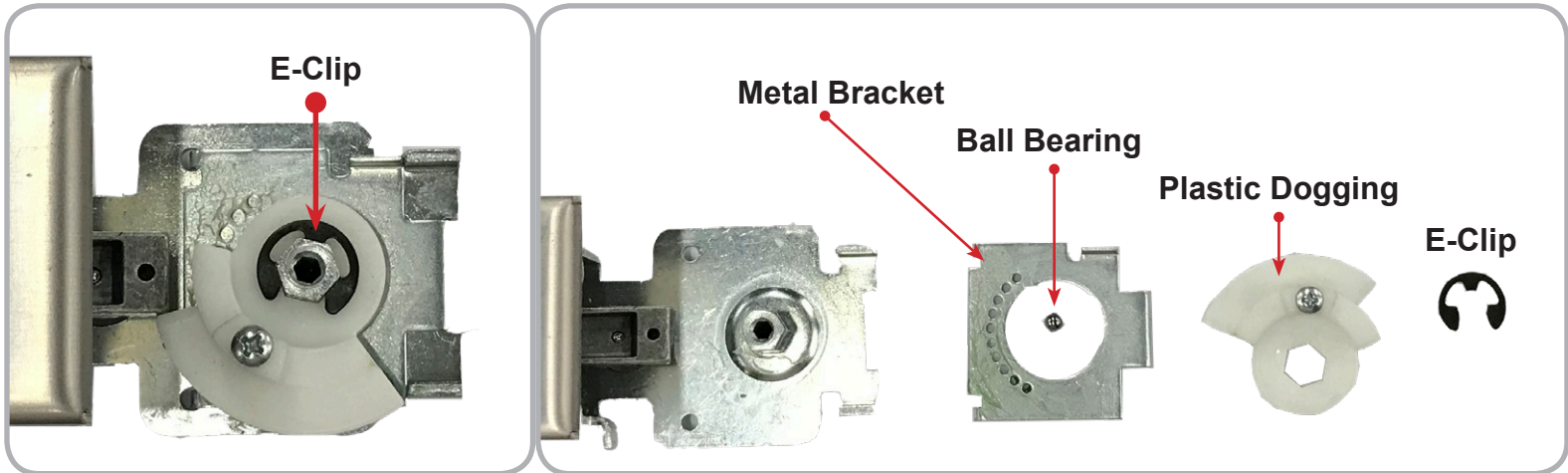


Base Rail

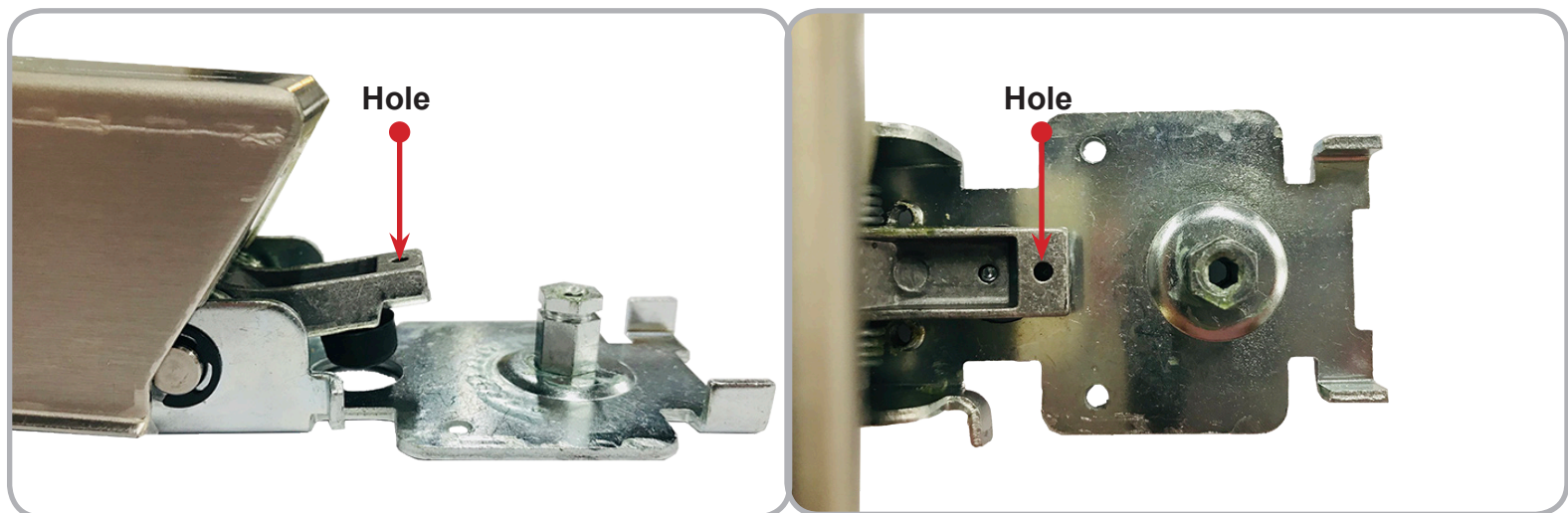


INSTALLATION INSTRUCTIONS

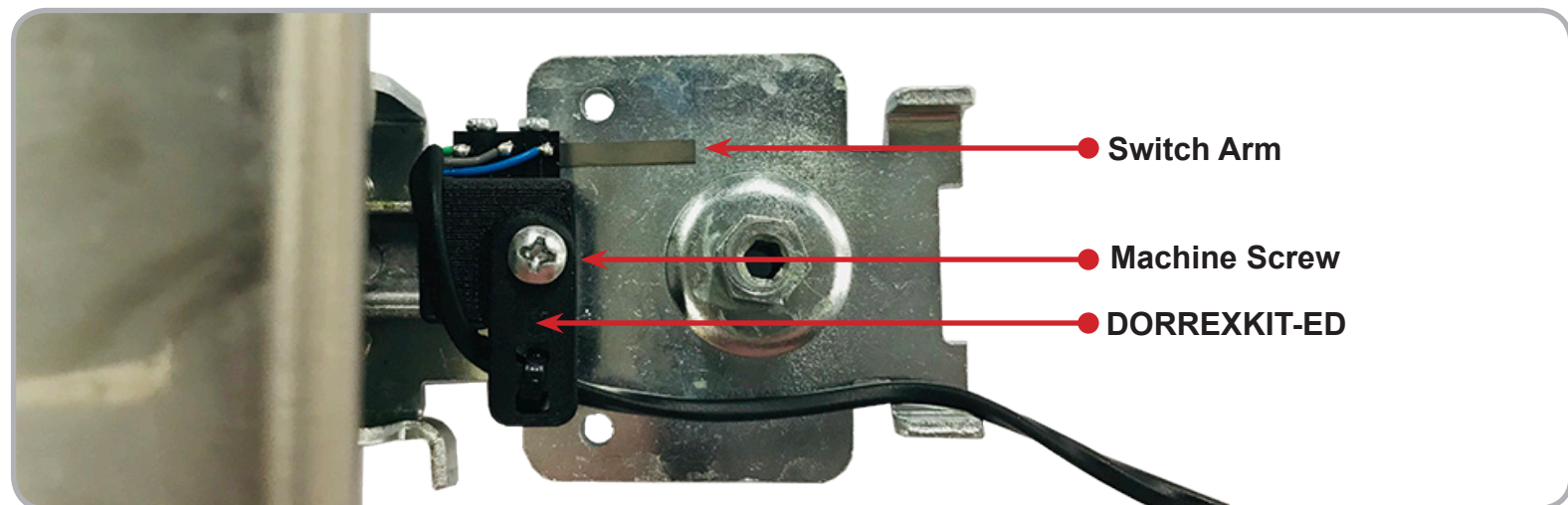
- 4** To install the DORREXKIT-ED, the dogging (if present) must be removed. Simply take the **E-Clip** off and the **Plastic Dogging Piece**, **Ball Bearing** and **Metal Bracket** can be gently lifted out.



- 5** The DORREXKIT-ED installs into the pre-existing **Hole** on the end of the back activating bracket.

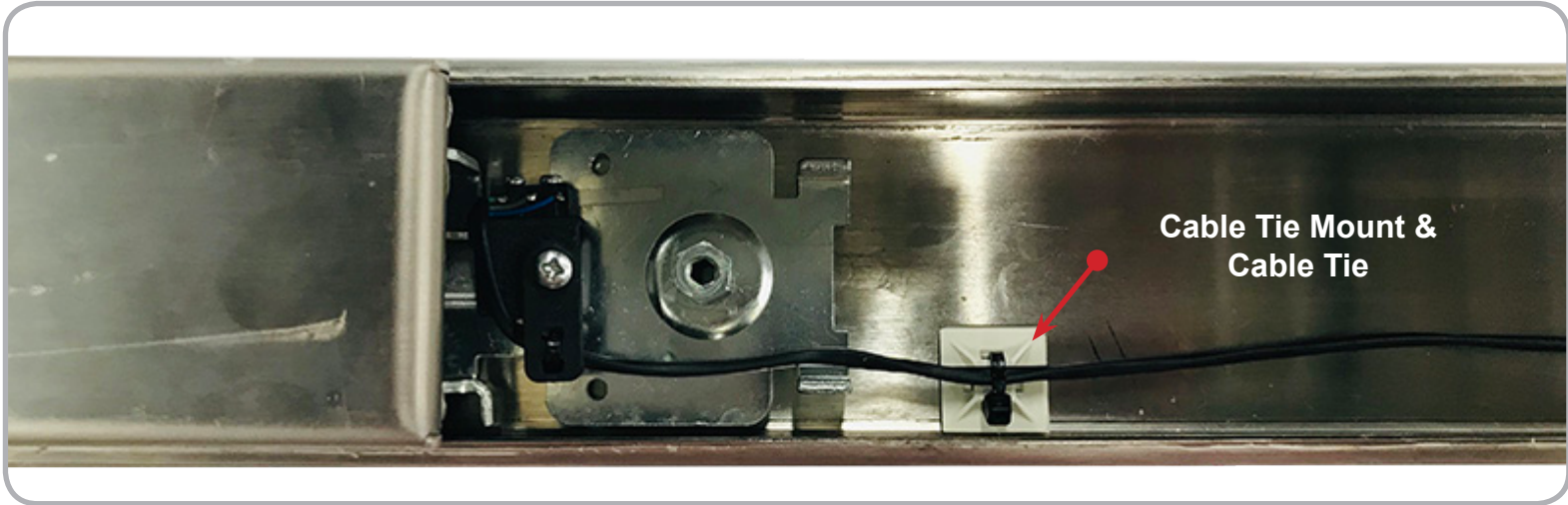


- 6** Install the DORREXKIT-ED with the **Switch Arm** facing away from the push pad using the **Machine Screw** provided with the kit.



INSTALLATION INSTRUCTIONS

- 7** Use the provided **Cable Tie Mount** and **Cable Tie** to provide strain relief to the **DORREXKIT-ED** wire.



SPECIFICATIONS:

- Single Pole - Double Throw (SPDT)
- Rating: .5A @24VAC
- Configuration: Green - Common (C)
Blue - Normally Open (NO)
Gray - Normally Closed (NC)