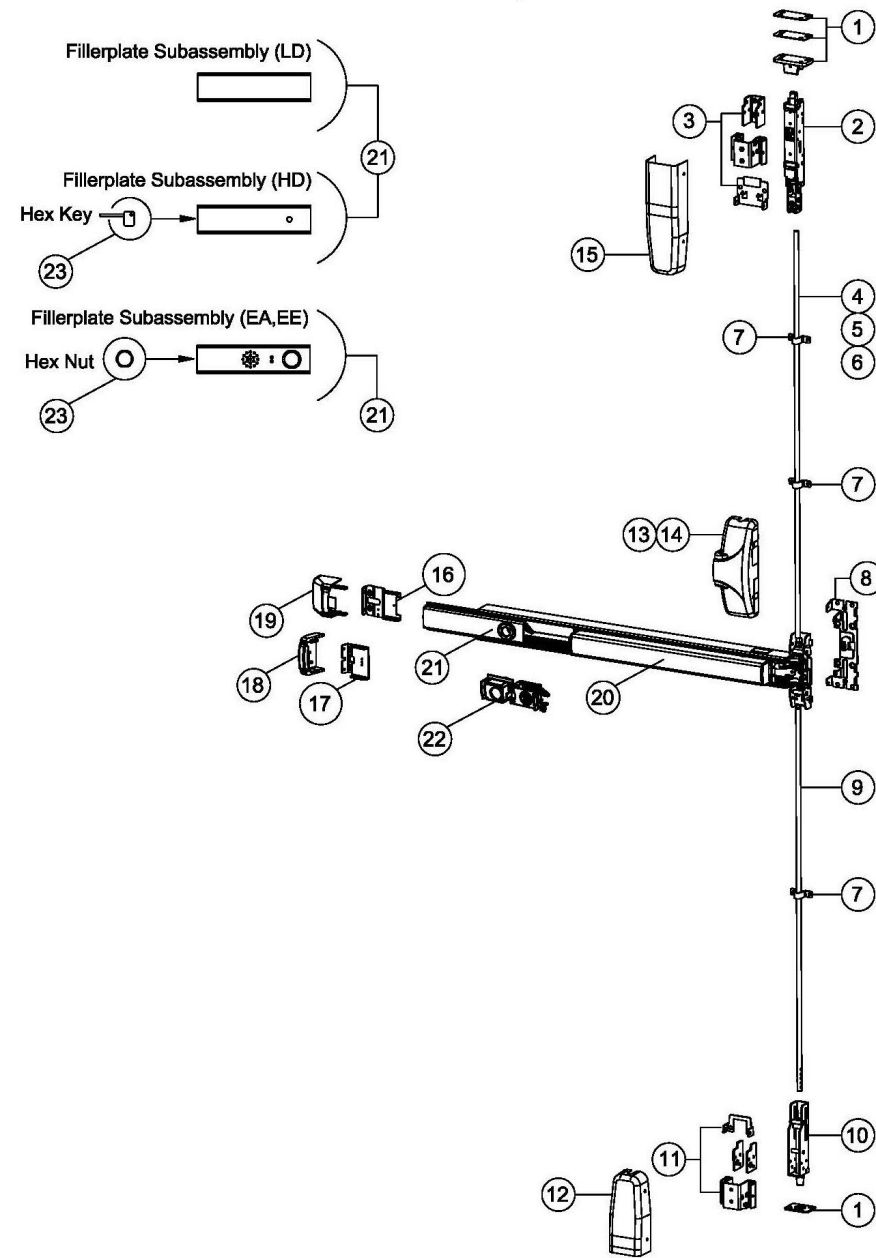




# 27 Series Parts List

For Mechanical Devices Only



Item	Order Part#	Fire QTY	Non-Fire QTY	Description	Price
1	106405-1	1	1	Strike kit, ADV 27	\$120.25
2	105984-3	0	1	Top latch assembly, FEMA, SVR	\$716.13
	105984-4	1	0	Top latch assembly, FEMA, SVR, Fire	\$729.57
3	106407-1	1	1	Top latch mounting kit	\$135.23
4	104051-3	1	1	Top rod, SS, 7'	\$69.12
	104051-4			Top rod, SS, 8'	\$69.12
5	106445	1	1	Top rod, ADV 27, Latch side, 10'	\$177.82
6	106446	1	1	Top rod, ADV 27, Device side, 10'	\$177.82
7	104073-4	1	1	Rod guide kit, ADV 27 (3 rod guide)	\$34.56
8	104171-1	1		Backplate assembly, wide BP11 (03 cam)	\$65.50
	104171-2		1	Backplate assembly, wide BP13 (03 cam)	\$66.01
9	103544	1	1	Bottom rod	\$44.97
10	106140	1	1	Bottom bolt assembly, SVR, FEMA	\$152.24
11	106408-1	1	1	Bottom latch mounting kit, ADV 27	\$97.61
12	106148-9	1	1	Cover, bottom latch, SVR, FEMA, 630	\$115.14
13	106141-9	1	1	Cover, centercase, wide, SVR, SS, 630	\$158.63
14	104640-13	1	1	Cover, centercase, wide, SVR, 628	\$126.65
	104640-14			Cover, centercase, wide, SVR, 693	\$126.65
	104640-15			Cover, centercase, wide, SVR, 695	\$126.65
15	106147-9	1	1	Cover, top latch, SVR, FEMA, 630	\$152.24
16	100147			Endcap mounting bracket, EC1	\$14.07
17	104303	1	1	Flush endcap mounting bracket, EC2	\$38.38
18	104612-1	1	1	Flush endcap, EC2, AL, 628	\$139.44
	104686-1			Flush endcap, EC2, AL, FC, 628	\$121.53
	104304-9			Flush endcap, EC2, SS, 630	\$88.27
	104317-9			Flush endcap, EC2, SS, FC, 630	\$120.25
19	101642-9	1	1	Endcap assembly, EC1, SS, 630	\$95.95
	102095-9			Endcap assembly, EC1, SS, FC, 630	\$147.12
20	105500-190	1	1	S&R Centercase/Pushpad assy	\$608.04
21	100860-78	1	1	S&R Fillerplate subassembly	\$171.42

NOTE: Your particular part or configuration may not be shown: Contact Detex technical support at 800-729-3839 (option 2)

