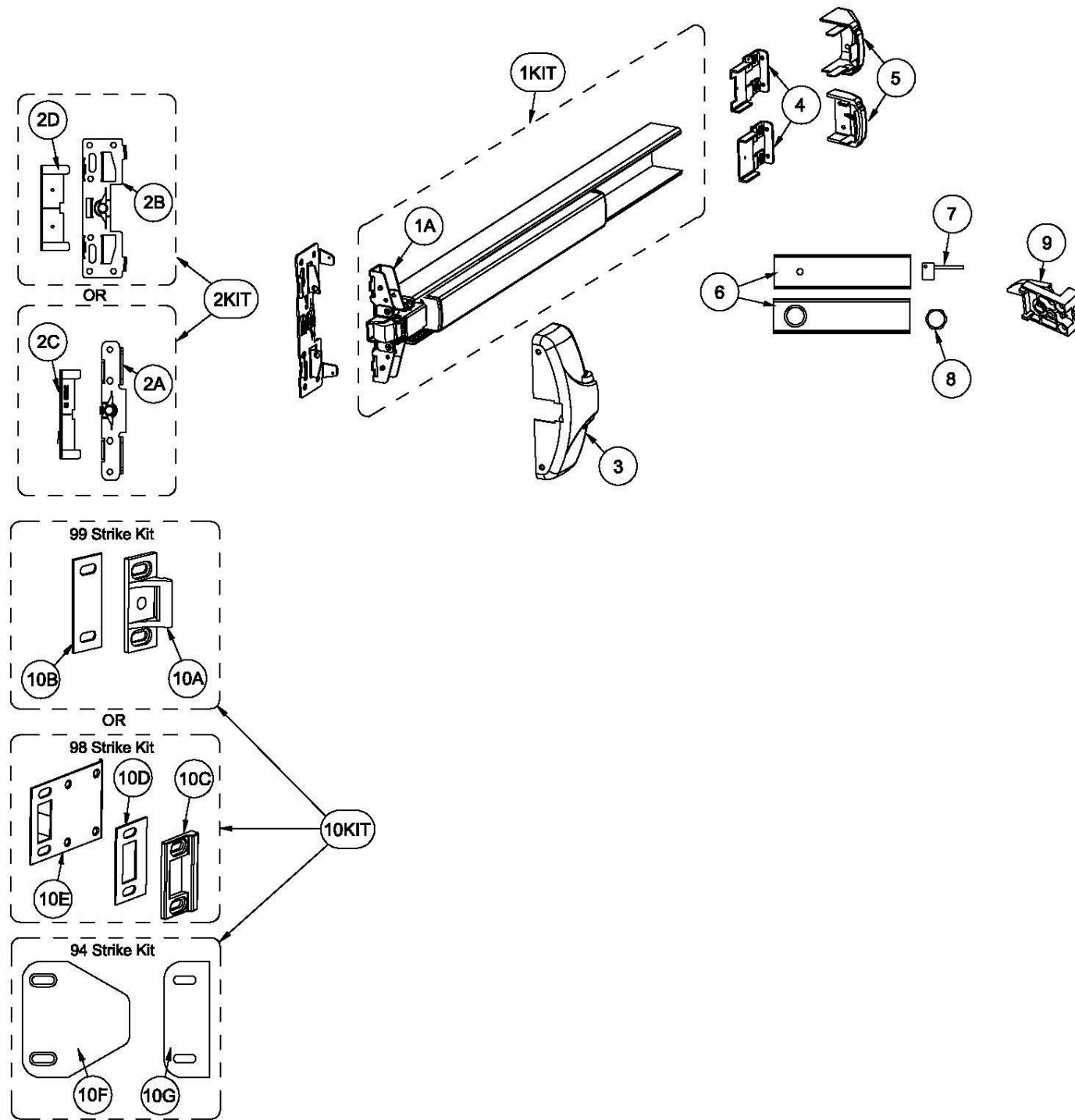




10 / 40 Series Parts List

For Mechanical Devices Only



Item	Order Part#	Description	Price
1KIT	105500-63	Centercase/Pushpad SubAssembly, 40 series, 36", 630 (Includes 1A)	\$671.61
	105500-62	Centercase/Pushpad SubAssembly, 10 series, 36", 630 (Includes 1A)	\$671.61
1A	100698-1	Centercase Assembly, Narrow Stile, 40 Series	\$168.86
	100698-2	Centercase Assembly, Wide Stile, 10 Series	\$171.42
2KIT	103806-1	Mounting Plate/Strike Locator Kit, Narrow Stile (includes 2A & 2C)	\$31.98
	103806-2	Mounting Plate/Strike Locator Kit, Wide Stile (includes 2B & 2D)	\$51.17
2A	100696-1	Mounting Plate, BP2, Narrow Stile	\$23.03
2B	100697-1	Mounting Plate, BP1, Wide Stile	\$44.78
2C	101899	Strike Locator 2" Glass Door (98)	\$11.51
2D	100212	Strike Locator, Standard (99)	\$5.12
3	100311-9	Centercase Cover, Stainless Steel, Narrow, 40 Series, 630	\$212.36
	100196-9	Centercase Cover, Stainless Steel, Wide, 10 Series, 630	\$126.65
	104602-1	Centercase Cover, Aluminum, Narrow, 40 Series, 628	\$197.00
	104640-1	Centercase Cover, Aluminum, Wide, 10 Series, 628	\$126.65
4	100147	Endcap bracket for EC1 (ramped) endcap w/o battery holder	\$14.07
	101093	Endcap bracket for EC1 (ramped) endcap w/ battery holder	\$19.19
	104303	Endcap bracket for EC2 (flush) endcap w/o battery holder	\$38.38
	104636	Endcap bracket for EC2 (flush) endcap w/ battery holder	\$38.38
5	101642-9	Endcap, EC1 (ramped) Stainless Steel, 630	\$95.95
	104304-9	Endcap, EC2 (flush) Stainless Steel, 630	\$88.27
	104612-1	Endcap, EC2 (flush) Aluminum, 628	\$139.44
6	100860-54	Fillerplate, Subassembly, S&R, Hex Dogging, HD, 10 series, 36", 630	\$171.42
	100860-49	Fillerplate, Subassembly, S&R, Cylinder Dogging, CD, 10 series, 36", 630	\$228.99
	100860-100	Fillerplate, Subassembly, S&R, Hex Dogging, HD, 10 series, 36", 628	\$678.88
	100860-137	Fillerplate, Subassembly, S&R, Hex Dogging, HD, 40 series, 36", 628	\$722.78
7	100450	Hex Key (for Hex Dogging)	\$7.00
8	100783	Cylinder Nut (for Cylinder Dogging)	\$6.00
9	102216-2	Hex Dogging Assembly	\$23.03
	102216	Cylinder Dogging Assembly	\$17.91
10KIT	100855-2	99 Strike Kit (includes 10A & 10B)	\$44.00
	100855-1	98 Strike Kit (includes 10C, 10D & 10E)	\$54.00
	102212-1	94 Double Door Strike Kit (includes 10F & 10G)	\$74.00
10A	100234-1	Strike, Non-roller	\$20.47
10B	100088	Strike Shim	\$1.29
10C	100480	Strike, Mortise	\$25.59
10D	100482	Shim, Mortise Strike	\$5.12
10E	100481	Shield, Strike	\$20.47
10F	102211	Double Door Strike Plate	\$72.92
10G	102214	Shim, 94 strike	\$2.56

NOTE: Your particular part or configuration may not be shown: Contact Detex technical support at 800-729-3839 (option 2)

