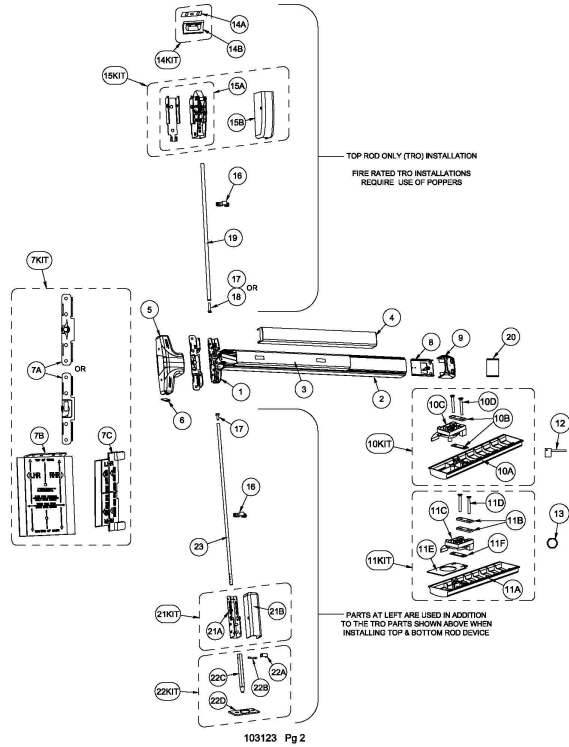


V50 / V51 Series Parts List

For Mechanical Devices Only



Item	Order Part#	Description	Price
1	101463-9	Centercase, RHR, Narrow Stile, 50 Series	\$101.52
	101463-11	Centercase, LHR, Narrow Stile, 50 Series	\$300.63
2	106281	Backplate Extrusion, 36", Silver	\$46.05
	106285	Backplate Extrusion, 48", Silver	\$74.20
	106289	Backplate Extrusion, 36", Black	\$49.68
	106290	Backplate Extrusion, 48", Black	\$99.36
3	103065-1	Pushpad Subassembly, 36"	\$87.12
	103065-2	Pushpad Subassembly, 48"	\$120.25
4	105417-1	Pushpad Wrap, 36", Red (English Text)	\$21.00
	105417-2	Pushpad Wrap, 48", Red (English Text)	\$21.00
	105417-3	Pushpad Wrap, 36", Black	\$21.00
	105417-4	Pushpad Wrap, 48", Black	\$21.00
5	101805-3	Centercase Cover	\$30.70
6	103547	Centercase Cover Cap (for TRO device only)	\$29.42
7KIT	103806-15	Mounting Plate/Strike Locator Kit, Narrow Stile, 96, BP2, (includes 7A, 7B, 7C)	\$64.80
7A	100696-1	Mounting Plate, BP2, Narrow Stile	\$23.03
	100699	Mounting Plate, BP8 or O3 Trim, Narrow Stile	\$24.31
7B	101511-1	Strike Locator	\$23.76
7C	100720	Centercase Locator	\$15.35
8	101844-1	Endcap bracket w/o battery holder	\$8.64
	101844	Endcap bracket w/ battery holder	\$11.52
9	101822	Endcap	\$7.68
10KIT	101803-1	Fillerplate, Subassembly, S&R, Hex Dogging, HD, V50 series, 36" (includes 10A through 10D)	\$53.73
	101812-1	Fillerplate, HD, 36"	\$16.63
	101812-2	Fillerplate, HD, 48"	\$17.91
10B	100164	Spacer, dogging bracket, .120" thick	\$2.56
10C	102216-4	Die cast dogging assembly, Hex Dogging (HD)	\$36.72
10D	PP-5802-124	Screw, mach, 10-32 x 1-1/2" PFH	\$0.39
11KIT	102195-1	Fillerplate, Subassembly, S&R, Cylinder Dogging, CD, V50 series, 36" (includes 11A through 11F)	\$58.85
	102194-1	Fillerplate, CD, 36"	\$27.56
	102194-2	Fillerplate, CD, 48"	\$29.30
11B	100164	Spacer, dogging bracket	\$2.56
11C	102216-3	Die cast dogging assembly, Cylinder Dogging (CD)	\$15.35
11D	PP-5802-124	Screw, mach, 10-32 x 1-1/2" PFH	\$0.39
11E	102196	Bracket, fillerplate, CD, V50	\$6.39
11F	100938	Spacer, dogging bracket, .060" thick	\$1.29

Item	Order Part#	Description	Price
12	100450	Hex Key (for Hex Dogging)	\$7.00
13	100783	Cylinder Nut (for Cylinder Dogging)	\$6.00
14KIT	100855-4	96 Strike Kit (includes 14A, 14B)	\$37.00
14A	101067	Strike Shim, Narrow	\$6.39
14B	100330	Strike, Non-roller, Narrow	\$28.14
15KIT	104071	Top Latch Assembly (includes 15A, 15B & cover screws)	\$288.36
15A	101464	Top Latch Assembly	\$254.58
15B	103545	Top Latch Cover	\$12.80
	104073-1	Rod Guide Kit (1 guide with hardware)	\$60.48
16	104073-2	Rod Guide Kit (2 guides with hardware)	\$11.88
	104073-3	Rod Guide Kit (3 guides with hardware)	\$19.44
17	101574-1	Bolt, 1/4-20 x 1"	\$0.32
18	101574-2	Bolt, 1/4-20 x 2"	\$0.58
	104051-3	Top Rod (7" application)	\$69.12
19	104051-4	Top Rod (8" application)	\$69.12
	103073-1	Top Rod (10" application)	\$255.85
20	101825-1	Narrow Stile Insert	\$16.20
21KIT	104070	Kit, Bottom Bracket/Cover (includes 21A, 21B & cover screws)	\$71.28
21A	103555	Bottom Bolt Bracket Subassembly	\$53.73
21B	103652-1	Cover, Bottom Latch	\$10.80
22KIT	104072	Kit, Bottom Bolt (includes 22A, 22B, 22C, 22D)	\$96.12
22A	103551	Bolt Clip	\$4.80
22B	103533	Pin, Bottom Bolt	\$5.12
22C	103563-1	Bottom Bolt	\$21.75
22D	103556	Strike, Bottom, with mounting hardware	\$61.41
23	103544	Bottom Rod	\$44.97

NOTE: Your particular part or configuration may not be shown: Contact Detex technical support at 800-729-3839 (option 2)

