

DEXTER[®]
COMMERCIAL HARDWARE

Full line catalog

Locks, closers and exits



Cylindrical locks and deadbolts



C1000 Series

Grade 1 cylindrical locks



Specifications

- Grade 1, UL listed 3-hour
- 1³/₈" to 2" door range standard
- All functions include 1¹/₈" x 2¹/₄" square-corner beveled latch with 2³/₄" backset and ANSI 1¹/₄" x 4⁷/₈" curved lip strike
- Accommodates Schlage conventional 6-pin (keyed 6) cylinders in Schlage C keyway, keyed different
- Accommodates SFIC to accept 6-pin/7-pin

How to order

Product number		Trim		Keying		
1	2	3	4	5		
Series	Function	Design	Finish	Cylinder		
C1000	-	PASS	-	C	626	-
C1000	-	CLRM	-	R	613	-

Grade 1 cylindrical locks			Trim		Keying
Series	Function and lever features		Designs	Finishes	Cylinders
C1000	PASS	F75 Passage (non-clutching)	R = Regular	613	N/A
	PRIV	F76 Privacy (non-clutching)	C = Curved	626	
	ENTR	F109 Entry/office (clutching)			
	NC-ENTR	F109 Entry/office (non-clutching)	R = Regular	613	KDC = Conventional 6-pin, Schlage C, KD
	CLRM	F84 Classroom (clutching)	C = Curved	626	
	CSEC	Classroom security			SFIC = Less SFIC
	STRM	Storeroom (clutching)			
	NC-STRM	Storeroom (non-clutching)	R = Regular	613	KDC = 6-pin, Schlage C
	ASYL	Asylum (clutching)	C = Curved	626	

Designs



Regular lever



Curved lever

Finishes



613



626

C1000 Series
Grade 1 cylindrical locks

Accessories

Latches: All latches are square corner with 1 1/8" x 2 1/4" faceplate. Grade 1 latches are square corner with 2 3/8" and 2 3/4" backsets available. Products with "234" in the description represent a 2 3/4" backset.

Product description	Function	Backset	Latch type	Finish
C1000-SL-630	Passage, privacy	2 3/8"	Springlatch	630
C1000-SL-234-630	Passage, privacy	2 3/4"	Springlatch	630
C1000-DL-630	Entry/office, classroom, classroom security, storeroom	2 3/8"	Deadlatch	630
C1000-DL-234-630	Entry/office, classroom, classroom security, storeroom	2 3/4"	Deadlatch	630

Strikes: Radius corner, full lip strike. 1 3/4" x 2 1/4".

Product description	Function	Finish
C1000-RCFLS-626	Radius corner, full lip strike	630

C2000 Series

Grade 2 cylindrical locks



Specifications

- Grade 2, UL listed 3 hour
- 1³/₈" to 1³/₄" door range standard
- Brass (605) ball knobs come packaged with square-corner beveled latch with 2³/₄" backset and ANSI 1¹/₄" x 2¹/₄" T-Strike standard.
- All other functions (except dummy) include 1¹/₈" x 2¹/₄" square-corner beveled latch with 2³/₄" backset and ANSI 1¹/₄" x 4⁷/₈" curved lip strike (30-148)
- Accommodates Schlage conventional 6-pin (keyed 6) in Schlage C keyway, keyed different and SFIC cylinders

How to order

Product number		Trim		Keying	
1	2	3	4	5	
Series	Function	Design	Finish	Cylinder	
C1000	- PASS	- C	- 626	-	
C1000	- CL-CLRM	- R	- 605	-	SFIC

Grade 2 cylindrical locks		Trim		Keying	
Series	Function and lever features	Designs	Finishes	Cylinders	
C2000	PASS	F75 Passage (non-clutching)	R = Regular	605 ¹	N/A
	PRIV	F76 Privacy (non-clutching)	C = Curved	613	
	SDUM	Single dummy (non-clutching)	B = ball (knob)	626/630 ²	
	CL-ENTR	F109 Entry/office (clutching)			
	ENTR	F109 Entry/office (non-clutching)	R = Regular	605 ¹	KDC = Conventional 6-pin, Schlage C, KD SFIC = Less SFIC
	CL-CLRM	F84 Classroom (clutching)	C = Curved	613	
	CLRM	F84 Classroom (non-clutching)	B = ball (knob)	626/630 ²	
	CL-STRM	Storeroom (clutching)			
STRM	Storeroom (non-clutching)				

1. 605 finish not available on Curved lever design.

2. Use 626 finish when ordering lever designs and 630 finish for Ball design.

Designs



Regular lever



Curved lever



Ball knob

Finishes



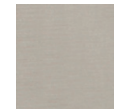
605



613



626



630

C2000 Series
Grade 2 cylindrical locks

Accessories

Latches: All latches are square corner with 1 1/8" x 2 1/4" faceplate. Grade 2 latches are square corner with 2 3/8" and 2 3/4" backsets available. Products with "234" in the description represent a 2 3/4" backset.

Product description	Function	Backset	Latch type	Finish
C2000-SL-630	Passage, privacy	2 3/8"	Springlatch	630
C2000-SL-234-630	Passage, privacy	2 3/4"	Springlatch	630
C2000-SL-613	Passage, privacy	2 3/8"	Springlatch	613
C2000-SL-605	Passage, privacy	2 3/8"	Springlatch	605
C2000-SL-234-605	Passage, privacy	2 3/4"	Springlatch	605
C2000-DL-630	Entry/office, classroom, storeroom	2 3/8"	Deadlatch	630
C2000-DL-234-630	Entry/office, classroom, storeroom	2 3/4"	Deadlatch	630
C2000-DL-613	Entry/office, classroom, storeroom	2 3/8"	Deadlatch	613
C2000-DL-605	Entry/office, classroom, storeroom	2 3/8"	Deadlatch	605
C2000-DL-234-605	Entry/office, classroom, storeroom	2 3/4"	Deadlatch	605

Strikes:

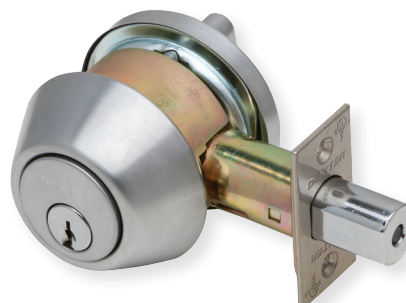
Product description	Function	Finish
C2000-RCFLS-630	Radius corner, full lip strike, 1 5/8" x 2 1/4"	630
C2000-RCFLS-613	Radius corner, full lip strike, 1 5/8" x 2 1/4"	613
C2000-ACLS-605	ANSI, curved lip strike, 1 1/4" x 4 7/8"	605
C2000-TS-605	T-strike, 1 1/4" x 2 3/4"	605

Tailpieces:

Product description	Function	Finish	Cylinder
C2000-TP-SFIC	SFIC 6- and 7-pin with shielding spacer	N/A	N/A

DB1000 Series

Grade 1 deadbolts



Specifications

- Grade 1, UL listed 3-hour
- 1³/₈" - 1⁷/₈" Conventional cylinder door range; 1⁵/₈" - 2" SFIC door range
- All functions include 2³/₈" - 2³/₄" universal square corner latch (30-253) and 1¹/₈" x 2³/₄" square corner lipless strike
- Accommodates Schlage conventional 6-pin (keyed 6) in Schlage C keyway, keyed different and SFIC cylinders

How to order

Product number		Trim		Keying	
1	2	3	4		
Series	Function	Finish	Cylinder		
DB1000	-	SCT	-	626	SFIC

Grade 1 deadbolts			Trim	Keying
Series	Functions		Finishes	Cylinders
DB1000	SCT	Single cylinder x thumbturn	613	KDC = Conventional 6-pin, Schlage C, KD
	DCT	Double cylinder	626	SFIC = Less SFIC

Finishes



613



626

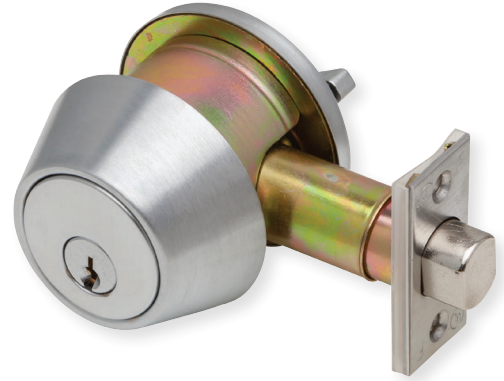
Accessories

Drive-in conversion kits

Product description	Function	Finish	Cylinder
DB2000-4WB-KIT-626	Drive-in replacement latch	626	N/A
DB2000-4WB-KIT-613	Drive-in replacement latch	613	N/A

DB2000 Series

Grade 2 deadbolts



Specifications

- Grade 2, UL listed 3-hour
- 1 3/8" – 1 3/4" Conventional cylinder door range; 1 5/8" - 2" SFIC door range
- All functions include 2 3/8" - 2 3/4" universal square corner latch (30-253) and 1 1/8" x 2 3/4" square corner lipless strike
- Accommodates Schlage conventional 6-pin (keyed 6) in Schlage C keyway, keyed different and SFIC cylinders

How to order

Product number		Trim		Keying	
1	2	3	4		
Series	Function	Finish	Cylinder		
DB2000	-	605	KDC	-	

Grade 2 deadbolts		Trim	Keying
Series	Functions	Finishes	Cylinders
DB2000	SCT	605	KDC = Conventional 6-pin, Schlage C, KD SFIC = Less SFIC
	DCT	613	
		626	

Finishes



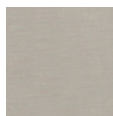
605



613



626



630*

* Available Q1 2020

Accessories

Tailpieces

Product description	Function	Finish	Cylinder
DB2000-TP-SFIC	SFIC Tailpiece kit including fork for G2 DB	N/A	N/A
DB2000-TP	SFIC Tailpiece for G2 DB	N/A	N/A

DB2000 Series

Grade 2 drive-in deadbolts



Specifications

- Grade 2, UL listed 3-hour
- 1³/₈" – 1³/₄" Conventional cylinder door range; 1⁵/₈" - 2" SFIC door range
- 4WB (4-way bolt) function includes square corner faceplate and drive-in style collar is installed out of box
- 4WB-KIT contains an adjustable latch with both square corner faceplate and drive-in style collar in the box
- Accommodates Schlage conventional 6-pin (keyed 6) in Schlage C keyway, keyed different

How to order

Product number		Trim	Keying
1	2	3	4
Series	Function	Finish	Cylinder
DB2000	-	626	KDC

Drive-in deadbolts		Trim	Keying
Series	Function and lever features	Finishes	Cylinders
DB2000	4WB-SCT Single cylinder x thumbturn drive-in	613 626	KDC = Conventional 6-pin, Schlage C, KD

Finishes

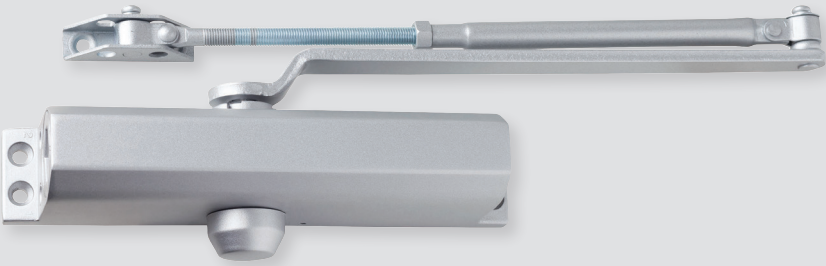
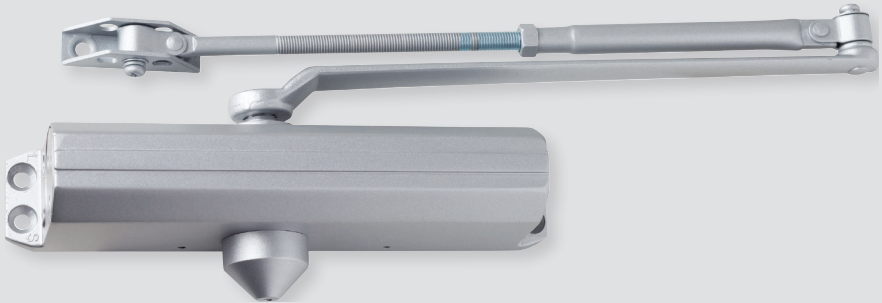
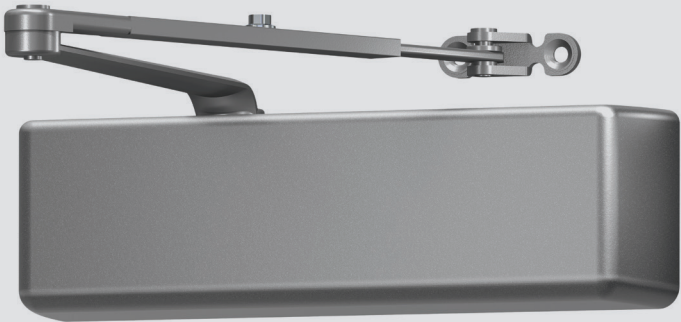


613



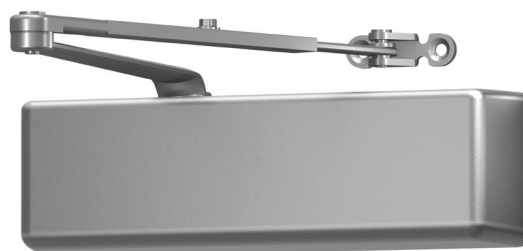
626

Surface door closers



DCH4000 Series

Heavy duty surface door closers



Specifications

- Grade 1, UL / UL 10C listed (non-hold open arms), ADA compliant at size 1
- Adjustable spring size 1-6
- 5" x 2 1/4" mounting hole pattern
- Staked, independent adjustment values: sweep speed, latch speed and back-check
- Single piece, cast iron body
- Universal hardware pack

Closers

Product description	Cylinder type	Cover	Arm function	Finish
DCH4000-STD-FULL-RW/PA-ALUM	STD	Full	Rw/PA	ALUM
DCH4000-STD-FULL-HW/PA-ALUM	STD	Full	Hw/PA	ALUM
DCH4000-STD-FULL-DS-ALUM	STD	Full	DS	ALUM
DCH4000-STD-FULL-DS/HO-ALUM	STD	Full	DS/HO	ALUM
DCH4000-STD-FULL-RW/PA-DKBRZ	STD	Full	Rw/PA	DKBRZ
DCH4000-STD-FULL-HW/PA-DKBRZ	STD	Full	Hw/PA	DKBRZ
DCH4000-STD-FULL-DS-DKBRZ	STD	Full	DS	DKBRZ
DCH4000-STD-FULL-DS/HO-DKBRZ	STD	Full	DS/HO	DKBRZ

Arm types

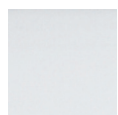
Regular arm (Rw/PA): Non-handed, regular arm with adjustable forearm assembly to accommodate a range of doors and frame reveal conditions. Mounts hinge side, top jamb or parallel arm. PA shoe included to allow installation in a parallel arm configuration.

Hold-open arm (Hw/PA): Non-handed, hold open arm with adjustable forearm assembly to accommodate a range of doors and frame reveal conditions. Mounts hinge side, top jamb or parallel arm. PA shoe included to allow installation in a parallel arm configuration.

Dead stop arm (DS): Non-handed, stamped, heavy duty, parallel arm includes a positive mechanical stop and non-adjustable forearm assembly for high volume traffic or potentially abusive installation conditions.

Dead stop hold-open arm (DS/HO): Non-handed, stamped, heavy duty, hold-open parallel arm includes a positive mechanical stop and non-adjustable forearm assembly for high volume traffic or potentially abusive installation conditions. Also includes a manually selective hold open function.

Finishes



ALUM/689



DKBRZ/695

DCH1000 Series

Heavy duty surface door closers



Specifications

- Grade 1, UL / UL 10C listed (non-hold open arms), ADA compliant at size 1
- Adjustable spring size 1-6
- 6 ³/₄" x 2 ³/₈" mounting hole pattern
- Staked, independent adjustment values: sweep speed, latch speed, and back-check
- Single piece, cast aluminum body
- Universal hardware pack

Closers

Product description	Cylinder type	Cover	Arm function	Finish
DCH1000-STD-FULL-RW/PA-ALUM	STD	Full	Rw/PA	ALUM
DCH1000-STD-FULL-RW/PA-DKBRZ	STD	Full	Rw/PA	DKBRZ
DCH1000-STD-FULL-HW/PA-ALUM	STD	Full	Hw/PA	ALUM
DCH1000-STD-FULL-DS-ALUM	STD	Full	DS	ALUM
DCH1000-STD-FULL-DS/HO-ALUM	STD	Full	DS/HO	ALUM

Arm types

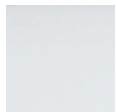
Regular arm (Rw/PA): Non-handed, regular arm with adjustable forearm assembly to accommodate a range of doors and frame reveal conditions. Mounts hinge side, top jamb or parallel arm. PA shoe included to allow installation in a parallel arm configuration.

Hold-open arm (Hw/PA): Non-handed, hold open arm with adjustable forearm assembly to accommodate a range of doors and frame reveal conditions. Mounts hinge side, top jamb or parallel arm. PA shoe included to allow installation in a parallel arm configuration.

Dead stop arm (DS): Non-handed, stamped, heavy duty, parallel arm includes a positive mechanical stop and non-adjustable forearm assembly for high volume traffic or potentially abusive installation conditions.

Dead stop hold-open arm (DS/HO): Non-handed, stamped, heavy duty, hold-open parallel arm includes a positive mechanical stop and non-adjustable forearm assembly for high volume traffic or potentially abusive installation conditions. Also includes a manually selective hold open function.

Finishes



ALUM/689



DKBRZ/695

DCM1000 Series

Medium duty surface door closers



Specifications

- Grade 1, UL / UL 10C listed (non-hold open arms), ADA compliant at size 1
- Adjustable spring size 1-6
- 12" x 3/4" mounting hole pattern
- Staked, independent adjustment values: sweep speed, latch speed, and back-check
- Single piece, cast aluminum body
- Universal hardware pack

Closers

Product description	Cylinder type	Cover	Arm function	Finish
DCM1000-STD-SLIM-RW/PA-ALUM	STD	Slim	Rw/PA	ALUM
DCM1000-STD-SLIM-RW/PA-DKBRZ	STD	Slim	Rw/PA	DKBRZ
DCM1000-STD-FULL-RW/PA-ALUM	STD	Full	Rw/PA	ALUM
DCM1000-STD-FULL-RW/PA-DKBRZ	STD	Full	Rw/PA	DKBRZ
DCM1000-STD-SLIM-HW/PA-ALUM	STD	Slim	Hw/PA	ALUM
DCM1000-STD-SLIM-HW/PA-DKBRZ	STD	Slim	Hw/PA	DKBRZ
DCM1000-STD-FULL-HW/PA-ALUM	STD	Full	Hw/PA	ALUM
DCM1000-STD-FULL-HW/PA-DKBRZ	STD	Full	Hw/PA	DKBRZ

Arm types

Regular arm (Rw/PA): Non-handed, regular arm with adjustable forearm assembly to accommodate a range of doors and frame reveal conditions. Mounts hinge side, top jamb or parallel arm. PA shoe included to allow installation in a parallel arm configuration.

Hold-open arm (Hw/PA): Non-handed, hold open arm with adjustable forearm assembly to accommodate a range of doors and frame reveal conditions. Mounts hinge side, top jamb or parallel arm. PA shoe included to allow installation in a parallel arm configuration.

Finishes



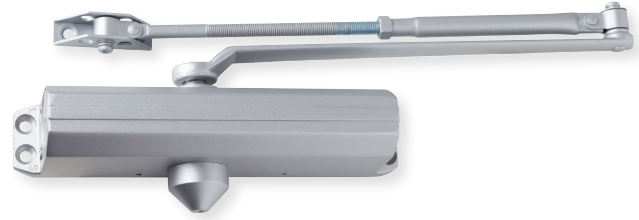
ALUM/689



DKBRZ/695

DCL2000 Series

Light duty surface door closers



Specifications

- Grade 1, UL / UL 10C listed (non-hold open arms), ADA compliant at size 1
- Adjustable spring size 1-6
- 9 1/16" x 3/4" mounting hole pattern
- Independent adjustment values: sweep speed, latch speed, and back-check
- Single piece, cast aluminum body
- Universal hardware pack

Closers

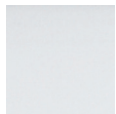
Product description	Cylinder type	Cover	Arm function	Finish
DCL2000-STD-LESS-RW/PA-ALUM	STD	Less	Rw/PA	ALUM
DCL2000-STD-LESS-RW/PA-DKBRZ	STD	Less	Rw/PA	DKBRZ
DCL2000-STD-LESS-HW/PA-ALUM	STD	Less	Hw/PA	ALUM
DCL2000-STD-FULL-RW/PA-ALUM	STD	Full	Rw/PA	ALUM

Arm types

Regular arm (Rw/PA): Non-handed, regular arm with adjustable forearm assembly to accommodate a range of doors and frame reveal conditions. Mounts hinge side, top jamb or parallel arm. PA shoe included to allow installation in a parallel arm configuration.

Hold-open arm (Hw/PA): Non-handed, hold open arm with adjustable forearm assembly to accommodate a range of doors and frame reveal conditions. Mounts hinge side, top jamb or parallel arm. PA shoe included to allow installation in a parallel arm configuration.

Finishes



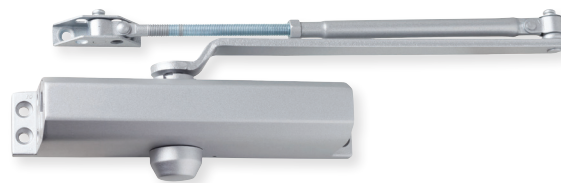
ALUM/689



DKBRZ/695

DCR8000 Series

Residential duty surface door closers



Specifications

- Grade 1, UL / UL 10C listed (non-hold open arms)
ADA compliant at size 1, (180 deg - TJ and Pull Side)
- Adjustable spring size 1-4
- 9 1/16" x 3/4" mounting hole pattern
- Independent adjustment values: sweep speed, latch speed, and back-check
- Single piece, cast aluminum body
- Universal hardware pack

Closers

Product description	Cylinder type	Cover	Arm function	Finish
DCR8000-STD-LESS-RW/PA-ALUM	STD	Less	Rw/PA	ALUM
DCR8000-STD-LESS-RW/PA-DKBRZ	STD	Less	Rw/PA	DKBRZ

Arm types

Regular arm (Rw/PA): Non-handed, regular arm with adjustable forearm assembly to accommodate a range of doors and frame reveal conditions. Mounts hinge side, top jamb or parallel arm. PA shoe included to allow installation in a parallel arm configuration.

Finishes



ALUM/689



DKBRZ/695

DCH1000, DCM1000, DCL2000 and DCR8000 Series Drop plates

Drop plates

Product description	Plate type	Finish
DCH1000P-DP18-ALUM	Pull side/Top jamb	ALUM
DCH1000P-DP18-DKBRZ	Pull side/Top jamb	DKBRZ
DCH1000P-DP18PA-ALUM	Parallel arm	ALUM
DCH1000P-DP18PA-DKBRZ	Parallel arm	DKBRZ
DCM1000P-DP18TJ-ALUM	Pull side/Top jamb	ALUM
DCM1000P-DP18TJ-DKBRZ	Pull side/Top jamb	DKBRZ
DCM1000P-DP18PA-ALUM	Parallel arm	ALUM
DCM1000P-DP18PA-DKBRZ	Parallel arm	DKBRZ
DCL2000P-DP18TJ-ALUM	Top jamb	ALUM
DCL2000P-DP18TJ-DKBRZ	Top jamb	DKBRZ
DCL2000P-DP18PA-ALUM	Parallel arm	ALUM
DCL2000P-DP18PA-DKBRZ	Parallel arm	DKBRZ

Note: DCL2000P drop plates are also compatible with DCR8000 series closers.

DCH1000 Series

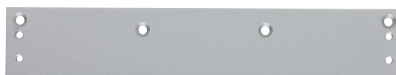


DCH1000
Pull side/top jamb

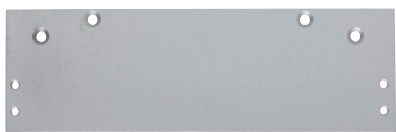


DCH1000
Parallel arm

DCM1000 Series



DCM1000
Pull side/Top jamb



DCM1000
Parallel arm

DCL2000 Series

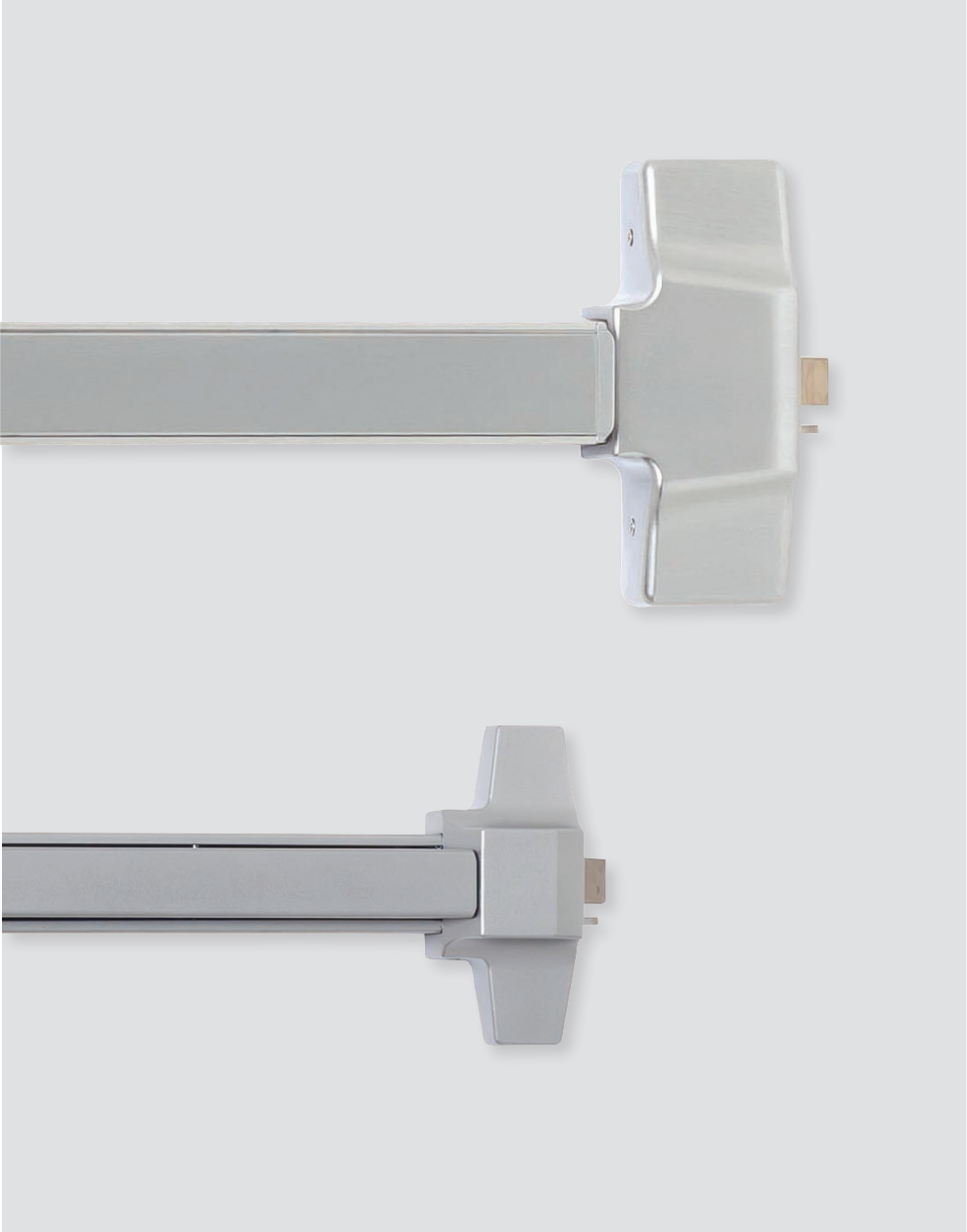


DCL2000
Top jamb



DCL2000
Parallel arm

Exit devices



ED1000 Series

Grade 1 exit devices



Specifications

- Grade 1, UL listed panic device, UL listed 3-hour fire device
- Durable, aluminum mechanism case construction
- Deadlatching standard
- Devices fit standard 1³/₄" thick door
- 4¹/₄" minimum stile width
- Hex key dogging standard on all panic devices
- All devices and trim are non-handed
- Universal hardware pack for wood and hollow metal
- Door widths: 36" device fits 29" to 36" door size; 48" device fits 33" to 48" door size

ED1000-R Series rim panic device

Product description	Trim function	Device length	Finish
ED1000-R-EO-3 FT-US26D	Exit Only	3'	US26D
ED1000-R-EO-4 FT-US26D	Exit Only	4'	US26D
ED1000-R-EO-3 FT-US32D	Exit Only	3'	US32D
ED1000-R-EO-4 FT-US32D	Exit Only	4'	US32D
ED1000-R-EO-3 FT-US10B	Exit Only	3'	US10B
ED1000-R-EO-4 FT-US10B	Exit Only	4'	US10B

ED1000-R-F Series rim fire exit hardware

Product description	Trim function	Device length	Finish
ED1000-R-F-EO-3 FT-US26D	Exit Only	3'	US26D
ED1000-R-F-EO-3 FT-US10B	Exit Only	3'	US10B

ED1000-V Series surface vertical rod panic device

Product description	Trim function	Device length	Door height	Finish
ED1000-V-EO-3 FT-7'DH-US26D	Exit Only	3'	7'	US26D
ED1000-V-EO-3 FT-7'DH-US10B	Exit Only	3'	7'	US10B

ED1000 Series
Trim and accessories

Trim

Product description	Function	Cylinder	Finish
ED1000T-CLRM-R-ESC-NC-US26D	Escutcheon lever - Classroom	NC (requires mortise ¹)	US26D
ED1000T-CLRM-R-ESC-NC-US10B	Escutcheon lever - Classroom	NC (requires mortise ¹)	US10B
ED1000T-NL-R-ESC-NC-US26D	Escutcheon lever - Night latch	NC (requires rim)	US26D
ED1000T-NL-R-ESC-NC-US10B	Escutcheon lever - Night latch	NC (requires rim)	US10B
ED1000T-PASS-R-ESC-US26D	Escutcheon lever - Passage blank escutcheon	-	US26D
ED1000T-PASS-R-ESC-US10B	Escutcheon lever - Passage blank escutcheon	-	US10B
ED1000T-CLRM-TP-NC-US26D	Thumbpiece pull plate - Classroom	NC (requires mortise ¹)	US26D
ED1000T-CLRM-TP-NC-US10B	Thumbpiece pull plate - Classroom	NC (requires mortise ¹)	US10B
ED1000T-NL-HPUL-NC-US26D	Handle pull plate - Night latch	NC (requires rim)	US26D
ED1000T-NL-HPUL-NC-US10B	Handle pull plate - Night latch	NC (requires rim)	US10B

NC = No cylinder included

¹ Mortise cylinder with standard cam similar to Schlage B502-191 cam



Escutcheon lever - Classroom



Escutcheon lever - Night latch



Escutcheon lever - Passage blank escutcheon

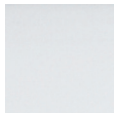


Thumbpiece pull plate - Classroom



Handle pull plate - Night latch

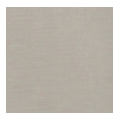
Finishes



US26D



US10B



US32D

Extension rods

Product description	Length	Finish
ED1000-EXTRD-US26D	12"	US26D
ED1000-EXTRD-US10B	12"	US10B

ED1500 Series

Grade 1 exit devices



Specifications

- Grade 1, UL listed panic device, UL listed 3-hour fire rim device
- Durable, steel mechanism case construction
- Deadlatching standard
- Devices fit standard 1³/₄" thick door
- 3¹/₂" minimum stile width
- Hex key dogging standard on all panic devices
- Rim devices and trim are non-handed; Surface vertical devices easily field reversible
- Universal hardware pack for wood and hollow metal
- Door widths: 36" device fits 29" to 36" door size; 48" device fits 33" to 48" door size

ED1500-R Series rim panic device

Product description	Trim function	Device length	Finish
ED1500-R-EO-3 FT-SP28	Exit only	3'	SP28
ED1500-R-EO-4 FT-SP28	Exit only	4'	SP28
ED1500-R-EO-3 FT-SP313	Exit only	3'	SP313
ED1500-R-EO-4 FT-SP313	Exit only	4'	SP313

ED1500-R-F Series rim fire exit device

Product description	Trim function	Device length	Finish
ED1500-R-F-EO-3 FT-SP28	Exit only	3'	SP28
ED1500-R-F-EO-3 FT-SP313	Exit only	3'	SP313

ED1500-V Series surface vertical rod panic device

Product description	Trim function	Device length	Door height	Finish
ED1500-V-EO-3 FT-7'DH-SP28	Exit only	3'	7'	SP28
ED1500-V-EO-3 FT-7'DH-SP313	Exit only	3'	7'	SP313

ED1500 Series
Trim and accessories

Trim

Product description	Function	Cylinder	Finish
ED1500T-CLRM-R-ESC-NC-SP28	Escutcheon lever - Classroom	NC (requires mortise ¹)	SP28
ED1500T-CLRM-R-ESC-NC-SP313	Escutcheon lever - Classroom	NC (requires mortise ¹)	SP313
ED1500T-NL-R-ESC-NC-SP28	Escutcheon lever - Night latch	NC (requires mortise ¹)	SP28
ED1500T-NL-R-ESC-NC-SP313	Escutcheon lever - Night latch	NC (requires mortise ¹)	SP313
ED1500T-NL-PULL-NC-SP28	Raised lip pull plate - Night latch	NC (requires rim)	SP28
ED1500T-NL-PULL-NC-SP313	Raised lip pull plate - Night latch	NC (requires rim)	SP313
ED1500T-DUM-PULL-SP28	Raised lip pull plate - Dummy	-	SP28
ED1500T-DUM-PULL-SP313	Raised lip pull plate - Dummy	-	SP313
ED1500T-CLRM-R-KDC-SP28	Key in lever round rose - Classroom	KDC	SP28
ED1500T-CLRM-R-KDC-SP313	Key in lever round rose - Classroom	KDC	SP313
ED1500T-NL-R-KDC-SP28	Key in lever round rose - Night latch	KDC	SP28
ED1500T-NL-R-KDC-SP313	Key in lever round rose - Night latch	KDC	SP313
ED1500T-CLRM-R-SFIC-SP28	Key in lever round rose - Classroom	Less SFIC	SP28
ED1500T-NL-R-SFIC-SP28	Key in lever round rose - Night latch	Less SFIC	SP28
ED1500T-NL-PULL-ESC-NC-SP28	Handle pull plate - Night latch	NC (requires rim)	SP28
ED1500T-NL-PULL-ESC-NC-SP313	Handle pull plate - Night latch	NC (requires rim)	SP313
ED1500T-DUM-PULL-ESC-SP28	Handle pull plate - Dummy	-	SP28
ED1500T-DUM-PULL-ESC-SP28	Handle pull plate - Dummy	-	SP313

NC = No cylinder included

KDC = KIL cylinder, Schlage C Keyway, Keyed differently

¹ Mortise cylinder with standard cam similar to Schlage B502-191 cam



Escutcheon lever -
Classroom/
Night latch



Raised lip
pull plate -
Night latch



Raised lip
pull plate -
Dummy



Key in lever round
rose - Classroom/
Night latch
Less SFIC not shown



Handle
pull plate -
Night latch



Handle
pull plate -
Dummy

Finishes



SP28

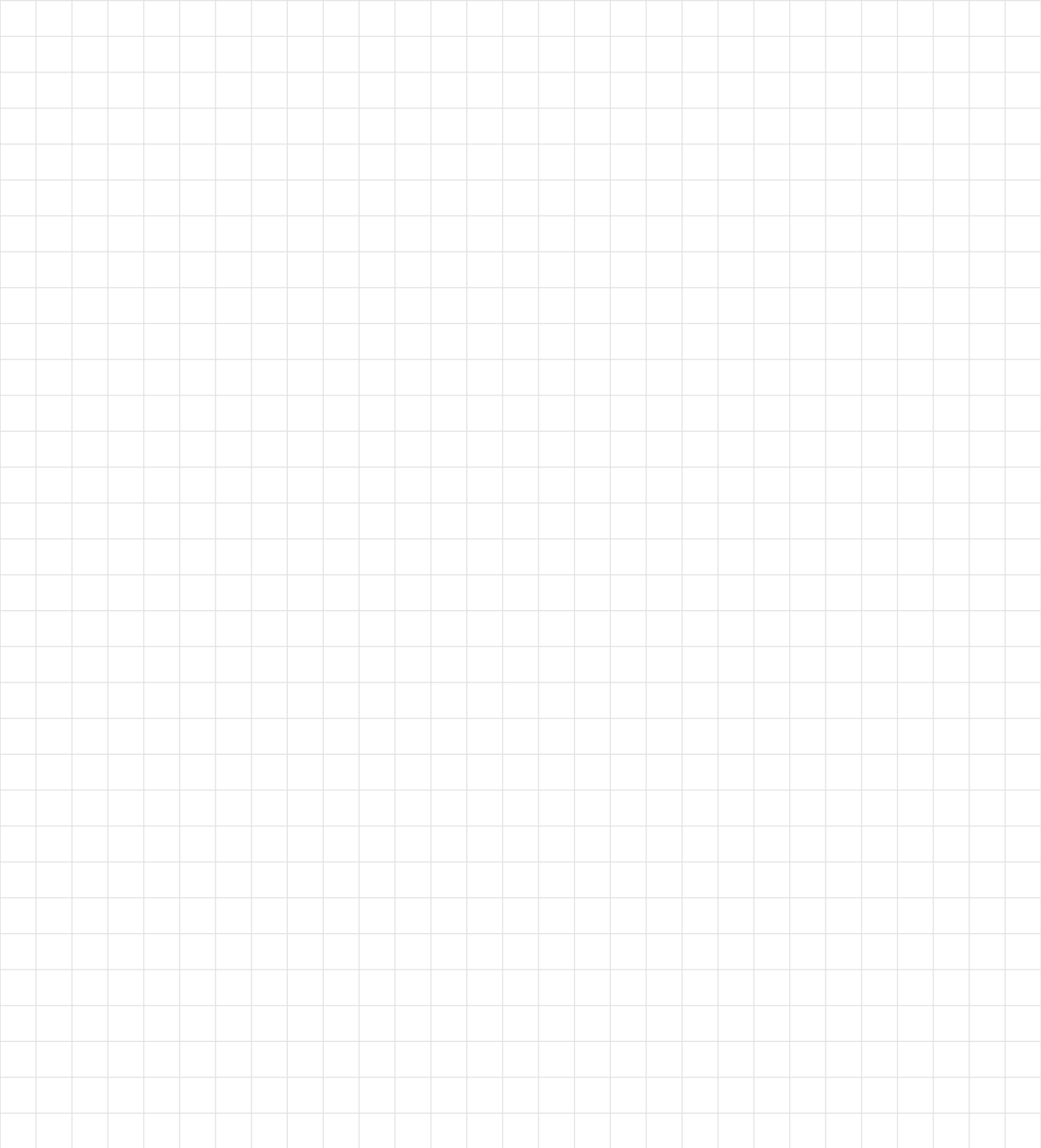


SP313

Extension rods

Product description	Length	Finish
ED1500-EXTRD-SP28	12"	SP28
ED1500-EXTRD-SP313	12"	SP313

Notes



About Allegion

Allegion (NYSE: ALLE) is a global pioneer in seamless access, with leading brands like CISA®, Interflex®, LCN®, Schlage®, SimonsVoss® and Von Duprin®. Focusing on security around the door and adjacent areas, Allegion secures people and assets with a range of solutions for homes, businesses, schools and institutions. Allegion had \$2.7 billion in revenue in 2018, and sells products in almost 130 countries.

For more, visit www.allegion.com.

KRYPTONITE ■ LCN ■  ■ STEELCRAFT ■ VON DUPRIN