

PLEASE READ BEFORE INSTALLATION

Familiarize yourself with the gate and post conditions prior to installation. The lock must rigidly mount to the gate post. The armature is designed to pivot slightly to compensate for reasonable misalignment. Due to the wide diversity of gate designs custom mounting brackets may be necessary to facilitate the installation. A DynaLock universal Gate Lock Bracket ("GLB" Option) is available to accommodate the majority of gate applications and may be purchased separately.

HANDLING

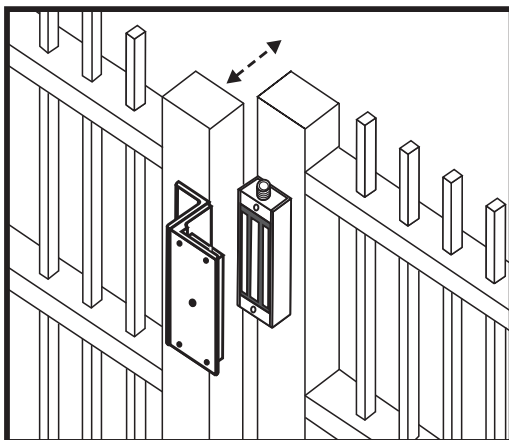
The Electromagnetic lock and armature are ruggedly constructed and designed to provide years of trouble-free service. Care must be taken during installation and use to keep the lock face and armature face free from dirt, rust, burrs, paint, or any other obstruction which may interfere with the lock and armature making good contact.

MAINTENANCE

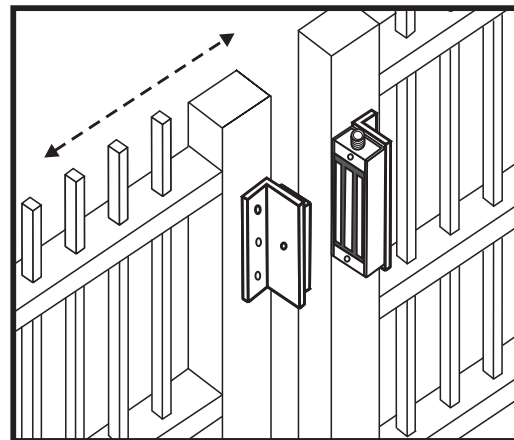
The lock assembly and gate armature have been plated for maximum corrosion resistance. To ensure peak performance clean the lock and armature faces with a mild detergent and a clean, soft cloth, then apply a light coat of WD40 to lubricate and protect these surfaces. This need only be done when dirt build-up is noticed.

GENERAL MOUNTING INFORMATION**SWING GATE**

Typical installation depicting the #2013 lock mounted to the vertical gate post. The armature is mounted to the gate using the adjustable Gate Lock Bracket ("GLB" Option), available from DynaLock.

**SLIDE GATE**

Typical installation depicting the use of "L" brackets custom-fabricated to suit the gate. The #2013 lock is mounted to the vertical gate post. The armature is mounted to the leading edge of the gate.



MOUNTING PREPARATION

1. SURVEY THE INSTALLATION

Inspect the gate and determine if supplemental brackets and/or special mounting hardware will be required for installation (refer to page 1 "General Mounting Information"). If you are using the optional Dynalock Gate Lock Bracket refer to the instructions furnished with the bracket for specific installation information. Fabricate/procure custom bracket(s), hardware, and/or attachments as necessary.

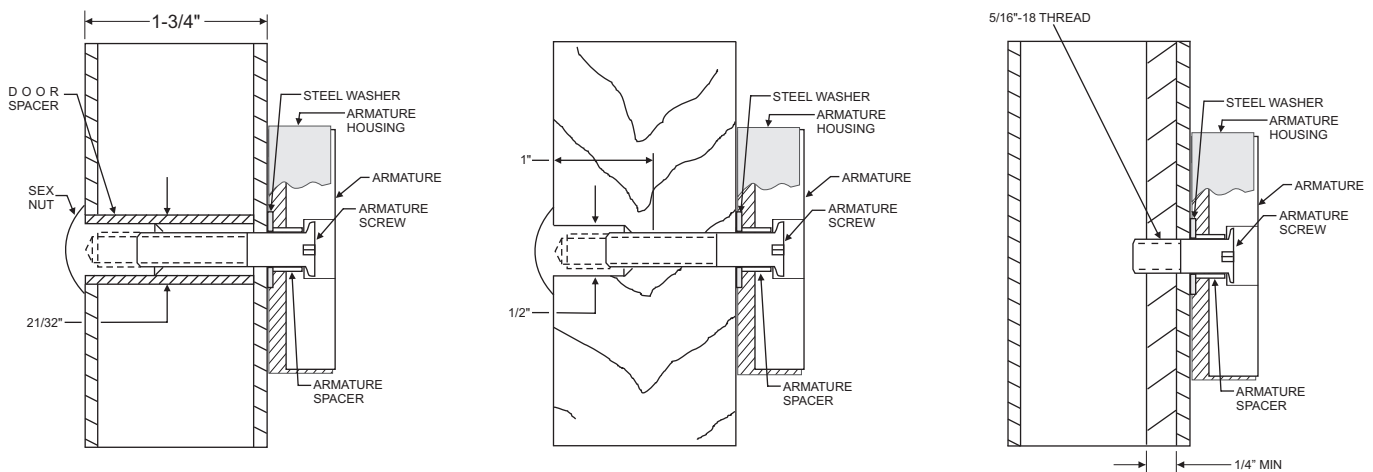
2. PREPARE THE GATE POST FOR MOUNTING THE GATE LOCK ASSEMBLY

Determine the desired location for mounting the 2013 Gate Lock assembly on the gate post. Orient the end of the lock with the 3/4" threaded conduit fitting relative to the location of electrical hook-up wiring.

If you are mounting the lock assembly directly to the post, locate, mark, and drill four (4) 9/64" dia. mounting screw holes as per Fig. "A" on page 3. If using an intermediate bracket to affix the lock assembly to the post, prep the mounting screw holes accordingly.

3. MOUNTING THE ARMATURE

Attach the armature housing to the gate using two (2) #8x1" sheet metal screws or drill and tap for 8-32x3/8" machine screws. Follow hole spacing dimensions shown in Figure B of this manual. Refer to the illustration below to select the correct mounting hardware and mount the armature. **Failure to properly secure the armature to the gate could result in serious injury or possible security breach.**



HOLLOW TUBE GATE

Drill an 11/32" diameter hole through gate. From sex nut side only enlarge the 11/32" hole to 21/32" diameter.

SOLID CORE GATE

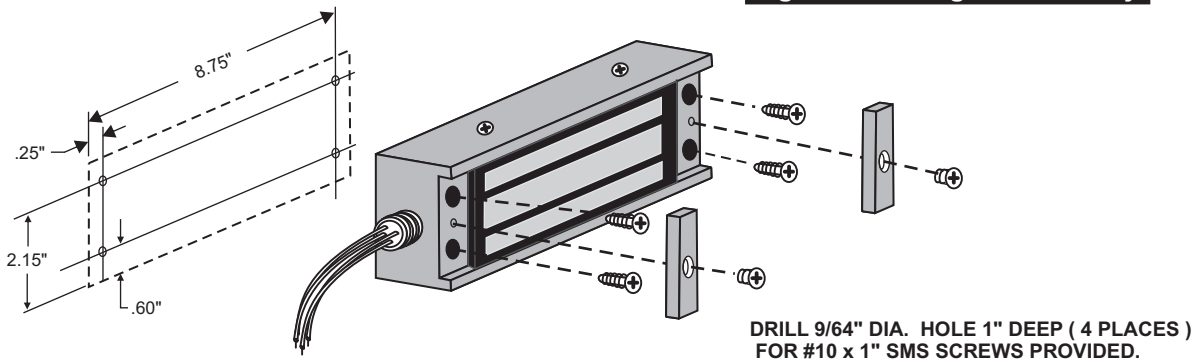
Drill an 11/32" diameter hole through gate. From sex nut side only drill 1/2" diameter hole to 1" depth.

REINFORCED TUBE GATE

Drill an 17/64" diameter hole and tap for 5/16"-18 thread.

INSTALLATION

Figure "A" - Magnet Assembly



5. MOUNTING THE MAGNET

Using a phillips head screw driver mount the magnet assembly to the gate with the four #10 x 1" self-tapping screws provided. Place the end covers on and screw them in with the #8-32x1/4" phillips flat head screw.

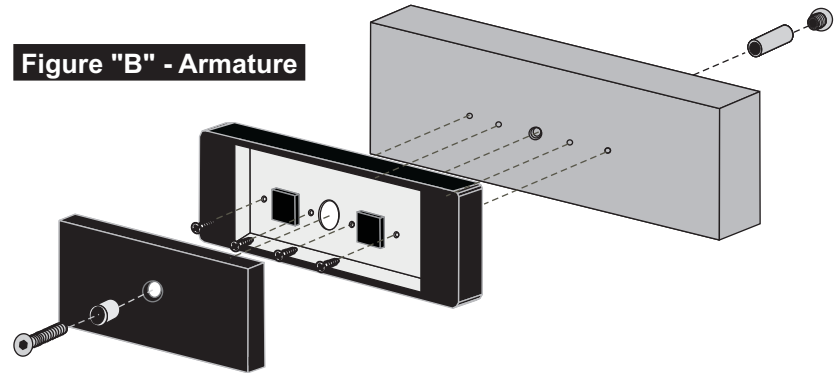
6. VERIFY PROPER ALIGNMENT

Close the gate and verify the lock face and armature are making full contact for the entire armature length. Make corrective adjustments as necessary.

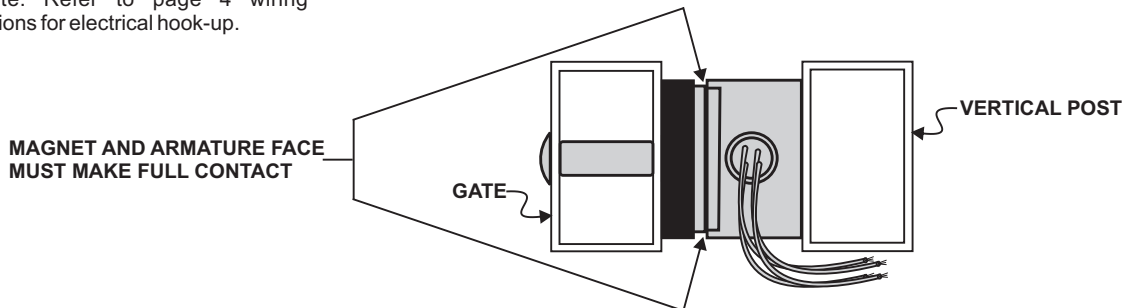
7. COMPLETION

The mechanical installation is now complete. Refer to page 4 wiring instructions for electrical hook-up.

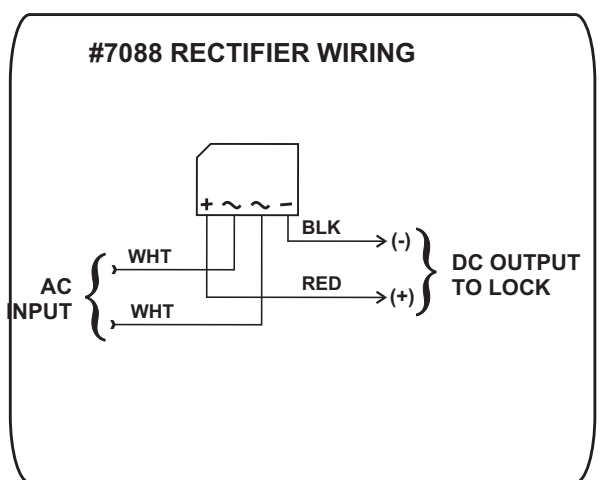
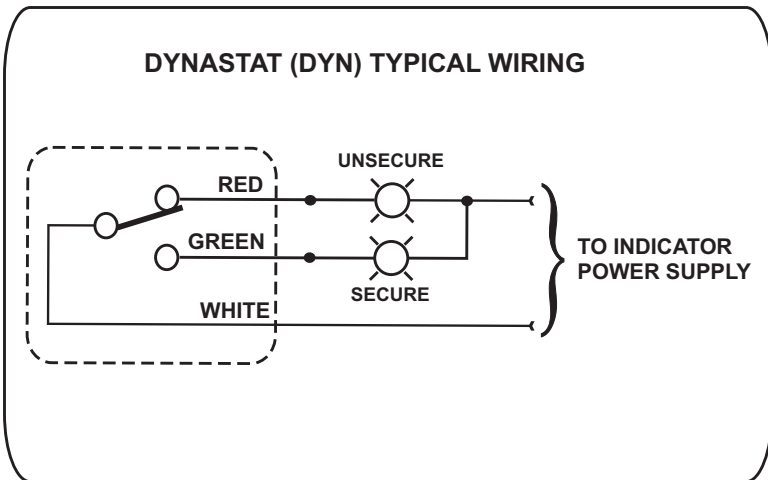
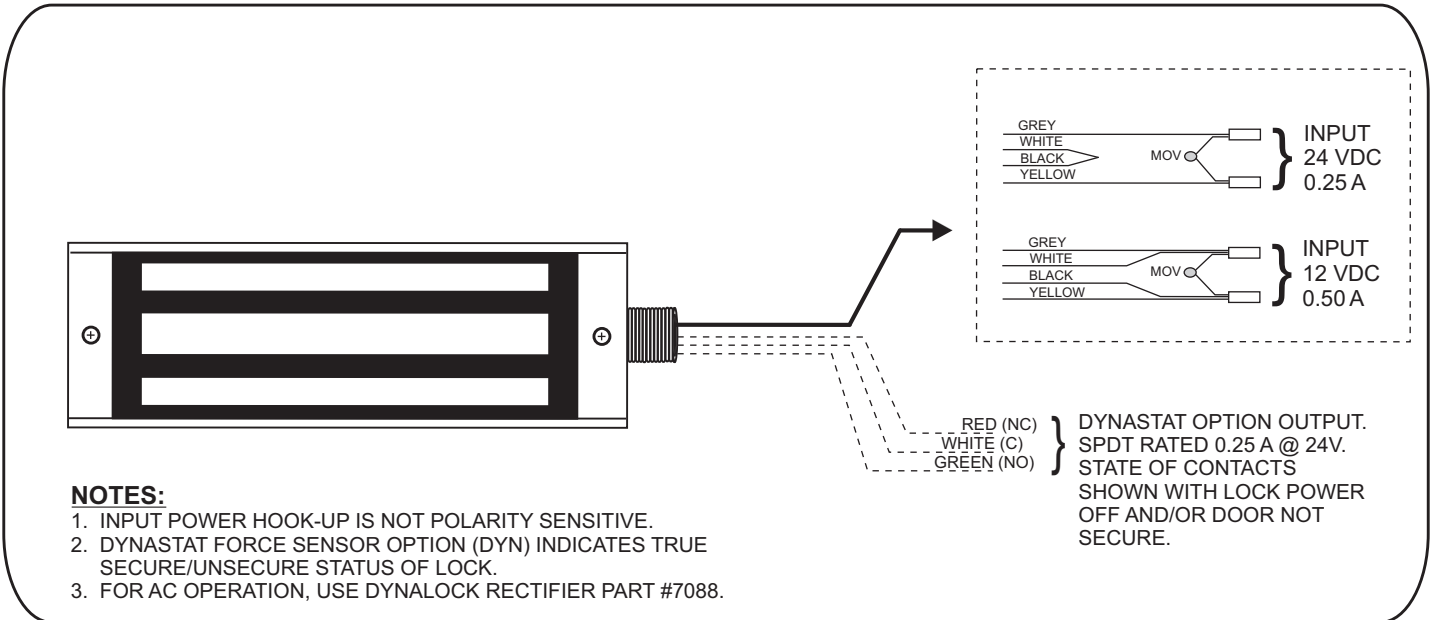
Figure "B" - Armature



TOP VIEW OF 2013 GATE LOCK ASSEMBLY FOR A TYPICAL SLIDING GATE



WIRING INSTRUCTIONS



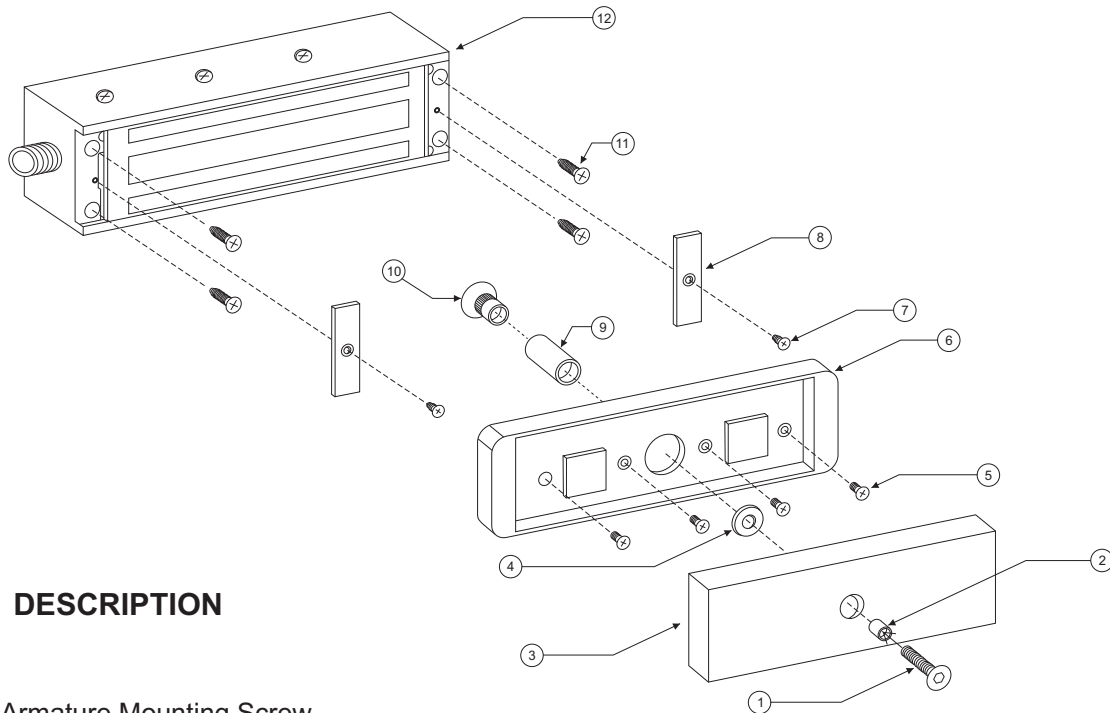
2013 BILL OF MATERIAL

- 1 - Mounting Instructions
- 1 - Wiring Instructions
- 1 - Electromagnetic Gate Lock
- 1 - Hardware Kit consisting of:
 - 4 - #10 x 1" Phillips Flat Head self-tapping screws
 - 4 - 8-32x3/8" FHS MS U/C
 - 4 - #8x1" FHS SMS
 - 1 - 0.375" Dx0.235" L Spacer
 - 1 - 1/4" Flat Zinc Washer
 - 1 - 5/16-18x2" FHS Turned
 - 1 - Spacer Tube
 - 1 - Un-Cut MOV
 - 1 - 3/16" Hex Key

HARDWARE KIT # 301364

TOOLS REQUIRED

- 1 - Electric Drill
- 1 - #2 Phillips Head Screw Driver
- 1 - Soft-faced Mallet
- 1 - 3/16" Hex Wrench
- 1 - 11/32" Drill Bit
- 1 - 21/32" Drill Bit
- 1 - 17/64" Drill Bit
- 1 - 9/64" Drill Bit
- 1 - 1/4" Drill Bit
- 1 - Hammer
- 1 - Center Punch
- 1 - Pencil



DESCRIPTION

- 1. Armature Mounting Screw
- 2. Armature Spacer
- 3. Armature
- 4. Steel Washer
- 5. Armature Housing Screw
- 6. Armature Housing
- 7. End Cover Screw
- 8. End Cover
- 9. Door Spacer
- 10. Sex Nut
- 11. Mounting Screw
- 12. Magnet Assembly

2013

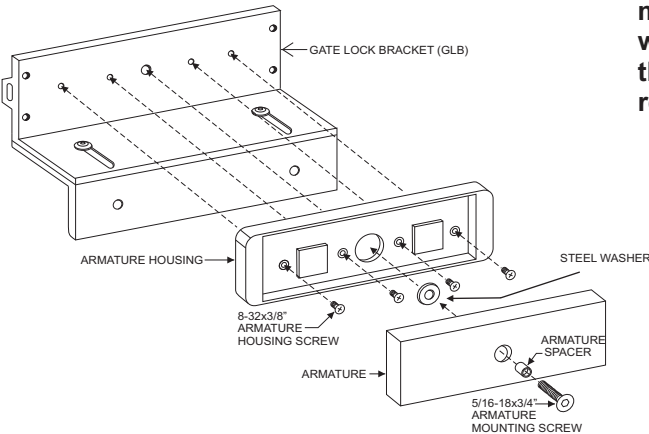
EXPLODED VIEW

MOUNTING PREPARATION

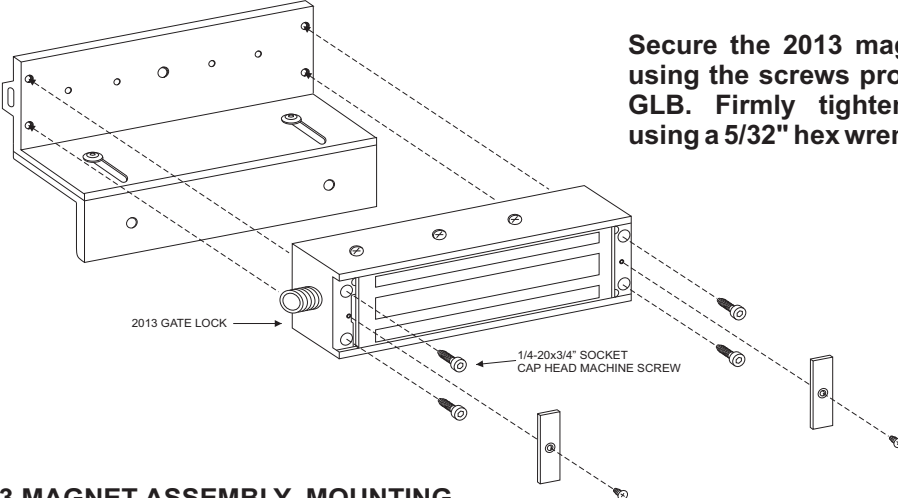
1. DETERMINE THE PREFERRED MOUNTING CONFIGURATION

From the illustrations below determine whether the Gate Lock Bracket will be used to mount the #2513 armature or magnet assembly. Select the hardware indicated and follow the specific instructions to mount the desired component.

2013 ARMATURE MOUNTING



Firmly tighten the armature mounting screw with a 3/16" hex wrench. Failure to properly secure the armature to the bracket could result in serious injury or a possible



Secure the 2013 magnet assembly using the screws provided with the GLB. Firmly tighten the screws using a 5/32" hex wrench.

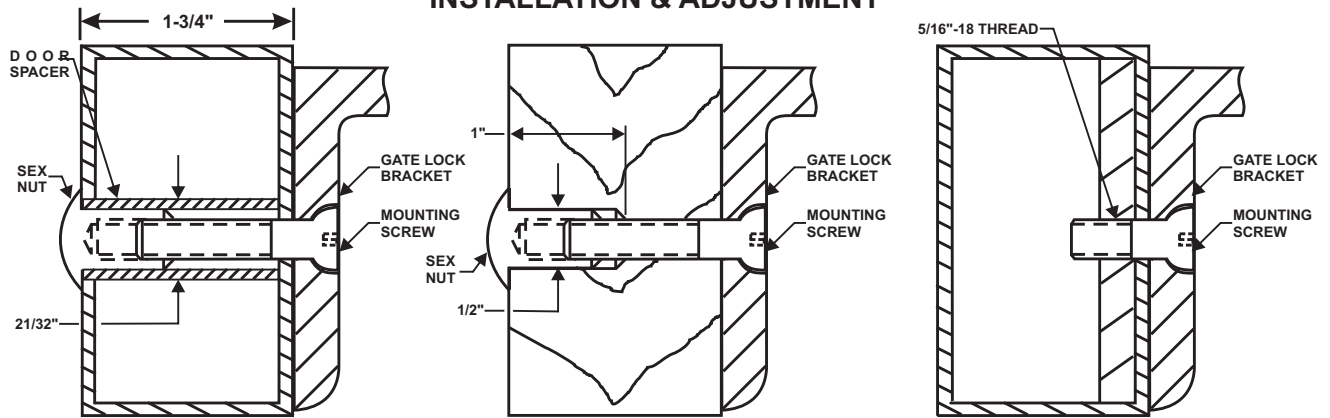
2013 MAGNET ASSEMBLY MOUNTING

2. PREPARE THE GATE FOR MOUNTING THE BRACKET

From the three illustrations on the top of page 6 select the one that resembles your gate type and follow the instructions for drilling the mounting screw holes.

**** The Gate Lock Bracket is an option that is not included in the standard 2013 lock**

INSTALLATION & ADJUSTMENT



HOLLOW TUBE GATE

Drill an 11/32" diameter hole through gate. From sex nut side only enlarge the 11/32" hole to 21/32" diameter.

SOLID CORE GATE

Drill an 11/32" diameter hole through gate. From sex nut side only drill 1/2" diameter hole to 1" depth.

REINFORCED TUBE GATE

Drill an 17/64" diameter hole and tap for 5/16"-18 thread.

3. ADJUSTING THE BRACKET

If necessary the Gate Lock Bracket may be adjusted to compensate for unusual clearance and offset conditions on the gate assembly (Refer to Figure "A"). Adjust the bracket as follows:

- a. Using the 5/32" hex wrench provided loosen the two bracket assembly screws two (2) full turns each.
- b. Slide the two halves of the bracket apart as required. Align the locking rib on the bottom of the upper half with a matching groove on the lower half (Refer to Figure "B")
- c. Firmly re-tighten the assembly screws, verify proper gate and lock alignment and operation and re-adjust as necessary.

Figure "A"

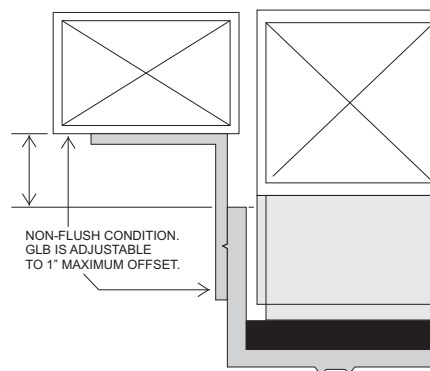
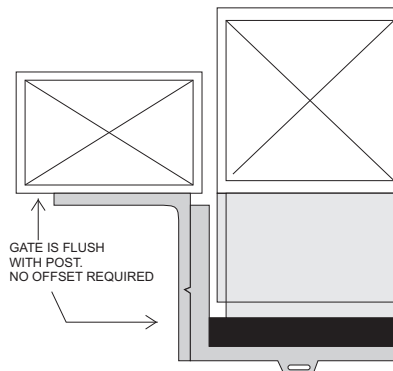
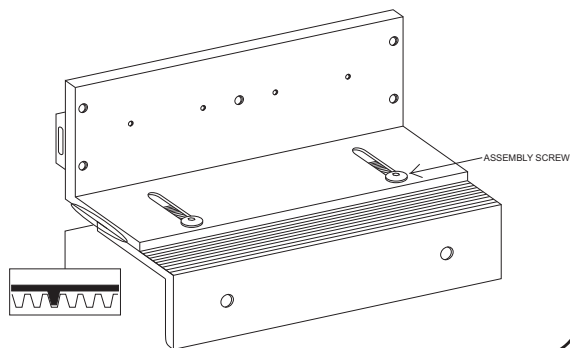


Figure "B" ADJUSTING THE GLB



**** The Gate Lock Bracket is an option that is not included in the standard 2013 lock**

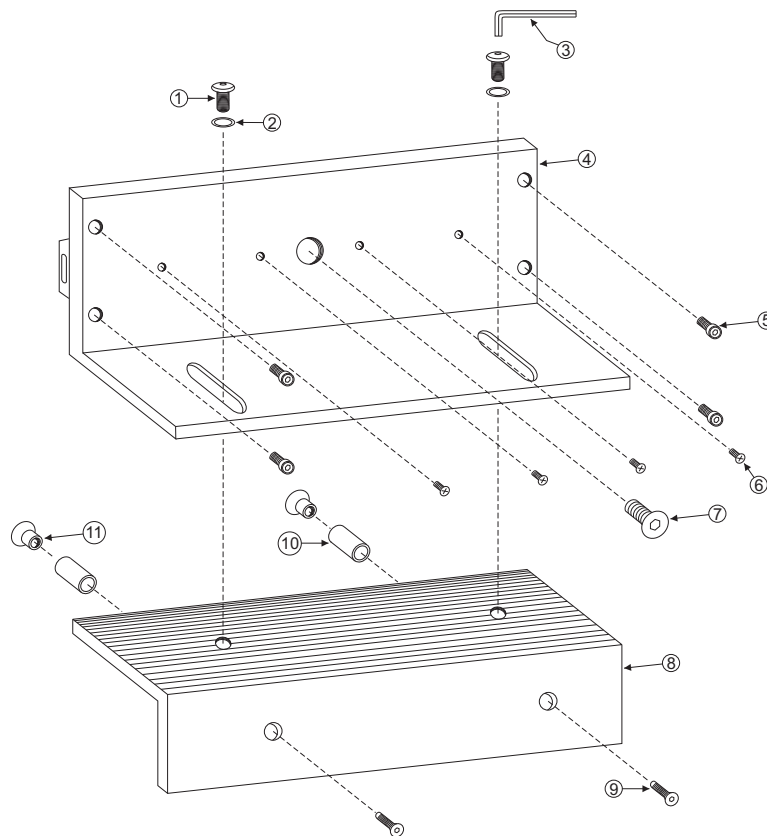
GATELOCK BRACKET BILL OF MATERIAL

- 1 - Mounting Instructions
- 1 - Gate Lock Bracket Assembly
- 1 - Hardware Kit consisting of:
 - 4 - 1/4-20 x 3/4" socket cap head machine screws (Gate Lock Mtg. Screws)
 - 1 - 5/16-18 x 3/4" hex flat head machine screw (Armature Mtg. Screw)
 - 1 - 5/32" Hex Wrench
- 2 - Mounting Bolt Assemblies, each consisting of:
 - 1 - 5/16-18 x 1-3/4" hex flat head machine screw
 - 1 - 5/16-18 Sex Nut
 - 1 - 1-11/16" long Door Spacer

TOOLS REQUIRED

- 1 - Electric Drill
- 1 - 3/16" Hex Wrench
- 1 - 11/32" Drill Bit
- 1 - 21/32" Drill Bit
- 1 - 1/2" Drill Bit
- 1 - 17/64" Drill Bit
- 1 - Hammer
- 1 - Center Punch
- 1 - Pencil

**** The Gate Lock Bracket is an option that is not included in the standard 2013 lock**

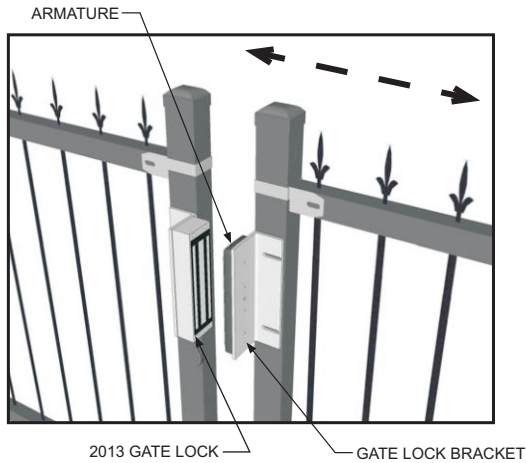


DESCRIPTION

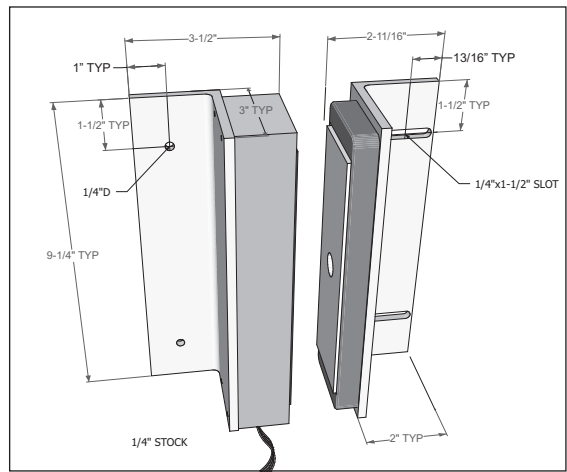
- 1. Assembly Screw
- 2. Lock Washer
- 3. Hex Wrench
- 4. Upper Bracket (300736)
- 5. Lock Mtg. Screw
- 6. Armature Housing Mtg. Screw
- 7. Armature Mounting Screw
- 8. Lower Bracket (300737)
- 9. Mounting Screw
- 10. Door Spacer
- 11. Sex Nut

GATE LOCK BRACKET EXPLODED VIEW

PLEASE READ BEFORE "GLB2" INSTALLATION



Familiarize yourself with the gate and post conditions prior to installation. This kit contains two "L" brackets and hardware to facilitate the installation of a 2013 Gate Lock on a sliding gate: one is predrilled to accept the 2013 Gate Lock and one is predrilled for the armature. Please see the 2013 Gate Lock instructions for more information. Due to the wide diversity of gate designs, additional custom hardware or bracketry may be required to complete the installation.



BRACKET MOUNTING

Using the brackets, along with the measurements shown, mark the hole locations on the gate/post (see next page for how to attach the armature and lock to the brackets).

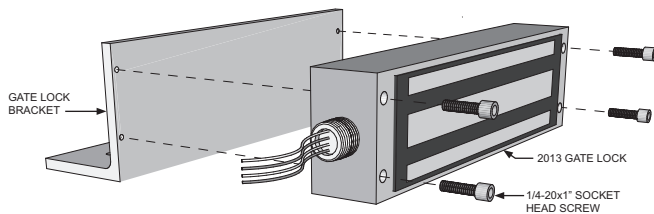
Drill and tap for 1/4-20 and secure with the (4) 1/4-20x1-1/2" machine screws included

- OR -

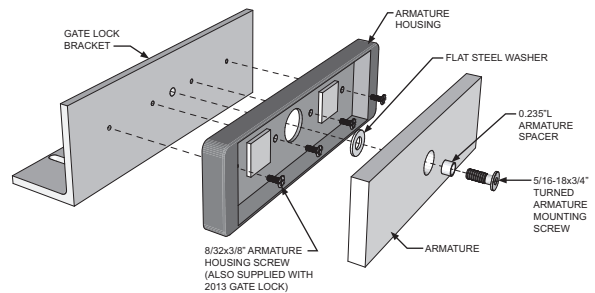
Drill 3/16" holes and secure with the (4) #14x1-1/2" included sheet metal screws.

ATTACHING THE ARMATURE AND LOCK TO BRACKETS

Attach the 2013 Gate Lock to the Gate Lock Bracket using four (4) 1/4-20x1" socket head screws.



Attach the armature housing to the Gate Lock Bracket (with slotted holes) using four (4) 8-32x3/8" armature



Next, attach the armature as shown. Firmly tighten the armature mounting screw using a 3/16" hex wrench.

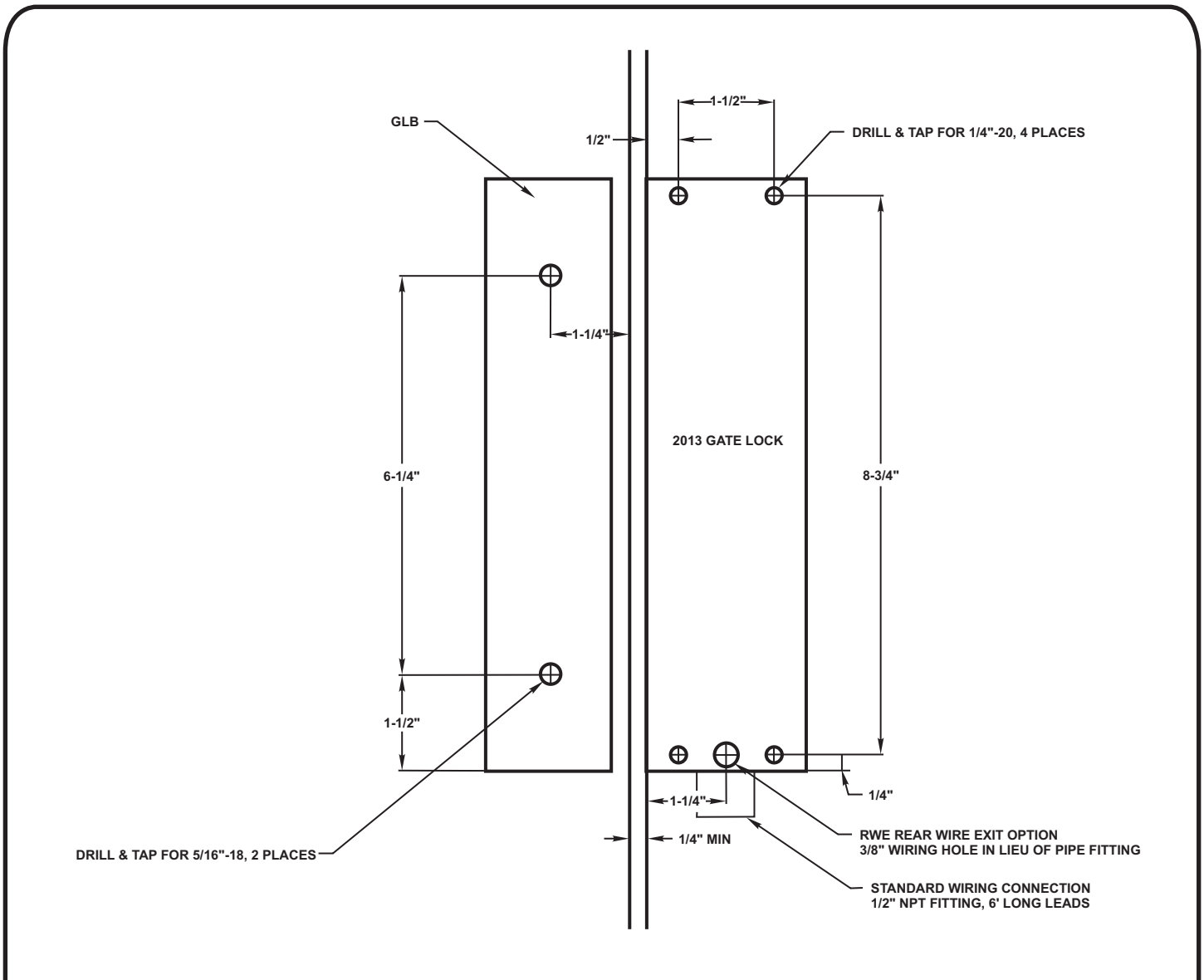
Failure to properly secure the armature to the bracket could result in serious injury or possible security breach.


HARDWARE PACK CONTENTS (PN 301377)

- (1) 5/16-18 x 3/4" FHS MACHINE SCREW (TURNED)
- (1) 0.375"D x 0.235"L ARMATURE SPACER
- (1) 1/4" FLAT WASHER

- (4) 1/4-20 x 1" SOCKET HEAD SCREW
- (4) 1/4-20 x 1-1/2" PHS MACHINE SCREW
- (4) #14 x 1-1/2" PHS SHEET METAL SCREW
- (4) #8-32 x 3/8" FH MACHINE SCREW

2013 REAR WIRE ENTRY TEMPLATE



 <p>DynaLock Corporation 705 Emmett Street • Bristol, CT 06010 Tel: (860) 582-4761 • Fax: (860) 585-0338</p>	<p>Template Drawing</p>	DRWN: MJL Date: 04/03/08	Title: 2013-GLB-RWE				REV:
		CHK'D: Date:	TEMPLATE DRAWING				
		CHK'D: Date:	Page: 1 of 1	Scale: —	Size: A	Drawing #: 301384	
		APPVD: Date:					

**** The REAR WIRE ENTRY is an option that is not included in the standard 2013 lock**