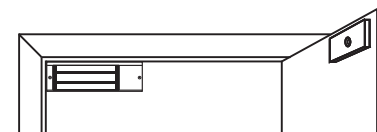
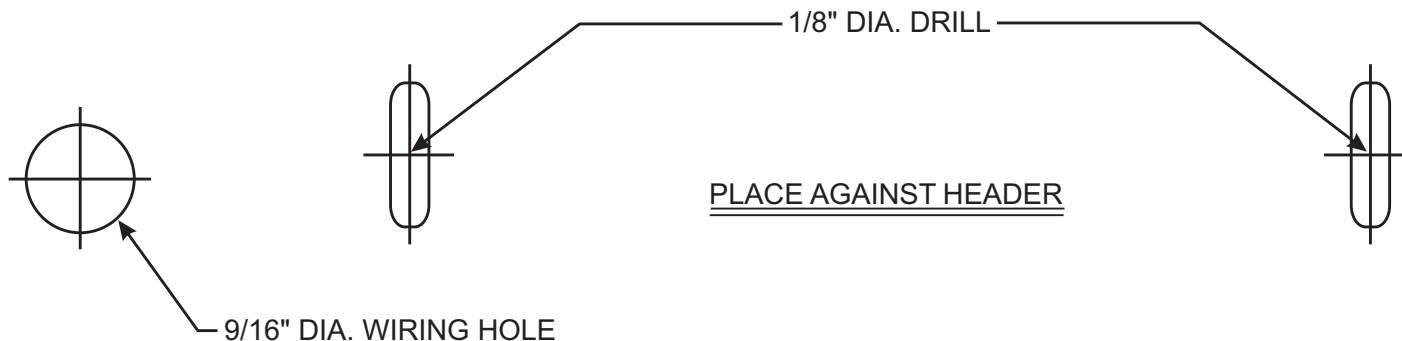




**Emergency Tech Support is available Monday - Friday, 5:00PM-8:00PM (EST)**  
 By Calling: Mike @ (860) 637-2394 or Glen @ (860) 637-2599



USE THIS SIDE OF TEMPLATE  
 FOR R.H.R. DOOR.  
 FINISHED INSTALLATION  
 SHOULD APPEAR AS ABOVE.

FOLD ON DOTTED LINE

PLACE AGAINST JAMB  
 OPPOSITE HINGES FOR  
 R.H.R. DOOR INSTALLATION →

# 3101-ETR / 3101B-ETR ELECTROMAGNETIC LOCKS

1/8" DIA. ARMATURE HOUSING MOUNTING  
 SCREW HOLES 1" DEEP (4 REQ'D.)



**REVISED TEMPLATE**  
 FOR USE WITH NEW PLASTIC  
 ARMATURE HOUSINGS ONLY

