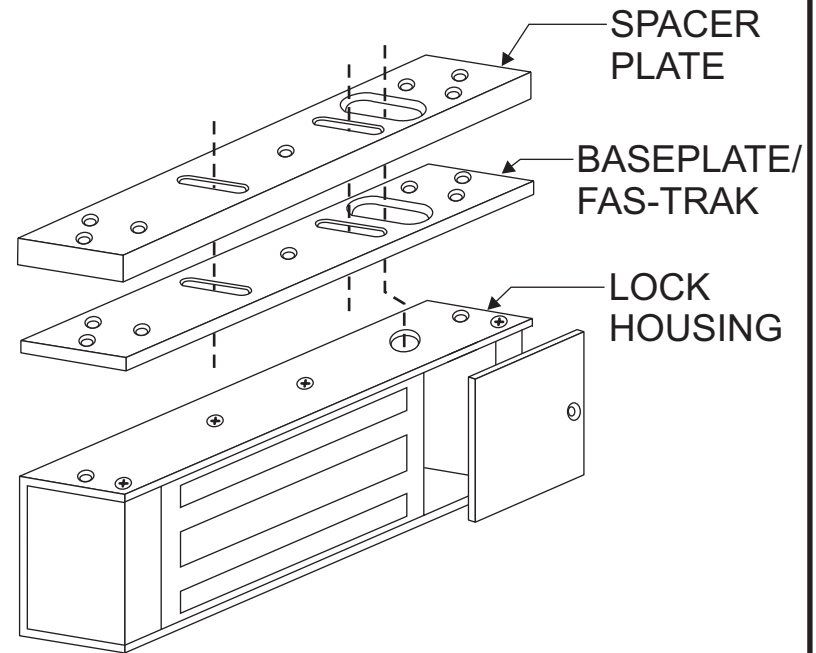
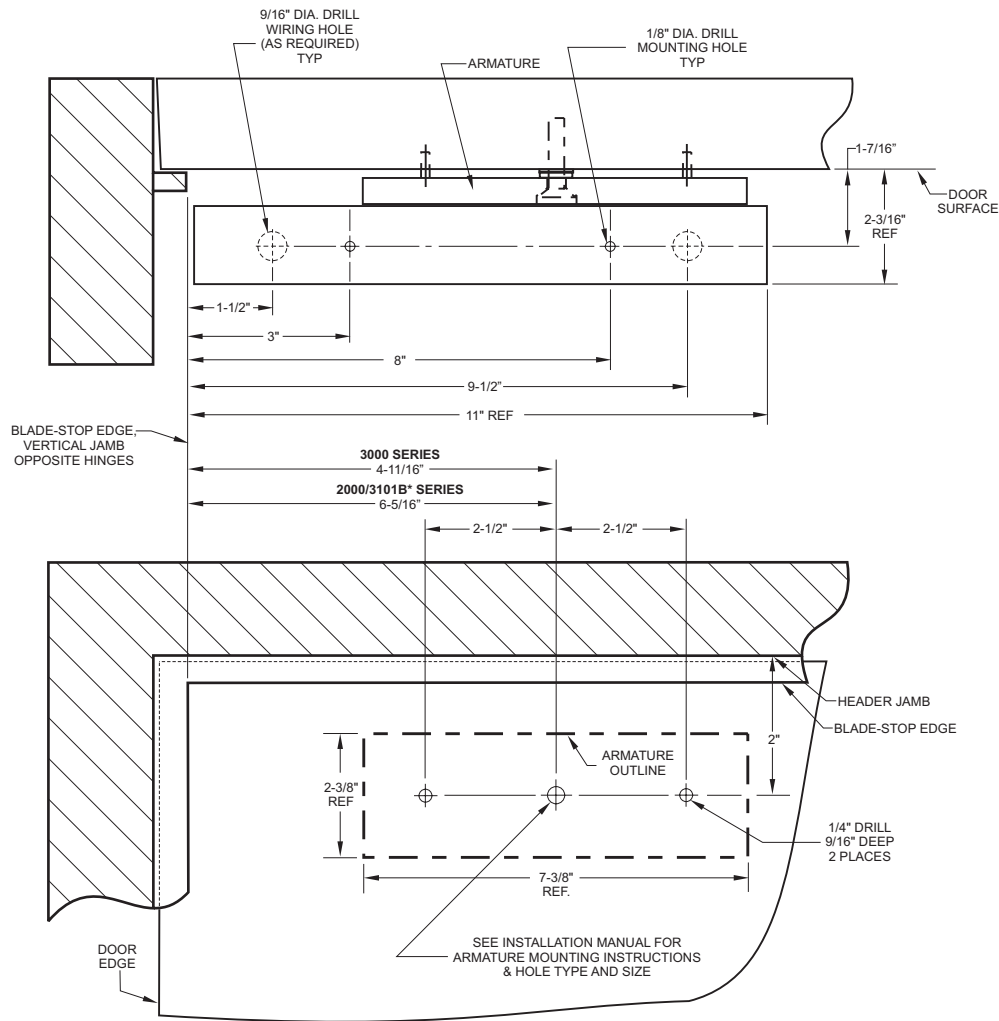


SUPPLEMENTAL INSTRUCTIONS



NOTE: SPACER PLATE IS REVERSIBLE TO ACCOMMODATE WIRING HOLE POSITION.

***NOTE: SEE 3101B TEMPLATE FOR ADDITIONAL MOUNTING HOLE LOCATIONS.**



DynaLock Corporation
705 Emmett Street • Bristol, CT 06010
Tel: (860) 582-4761 • Fax: (860) 585-0338

Template Drawing

DRWN: MJL Date: 11/16/05
CHK'D: JAS Date: 12/01/05
CHK'D: Date:
APPV'D: Date:

Title: **TEMPLATE DRAWING
FOR 2000/3000/3101B SERIES
USING MODEL #4301 SPACER PLATE**

Page 1 Of 1	Scale: —	Size: A	Drawing #: 301225	REV:
----------------	-------------	------------	-----------------------------	------