



705 Emmett Street • Bristol, CT 06010
Phone: (860) 582-4761 • Fax: (860) 585-0338

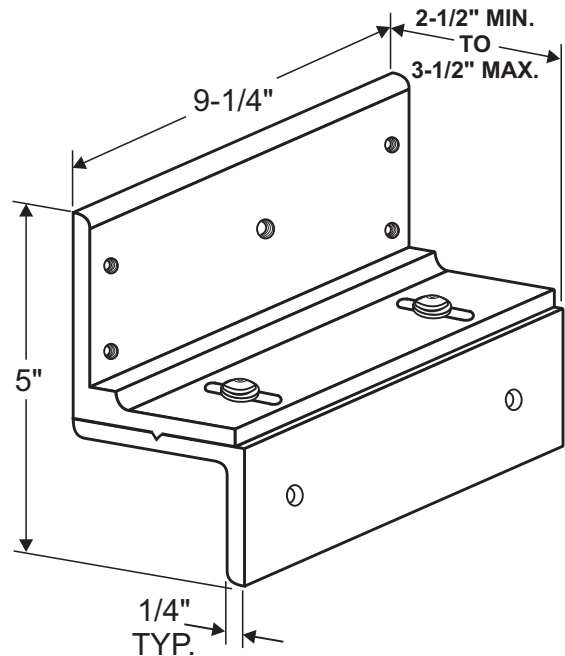
MODEL #GLB GATE LOCK BRACKET INSTALLATION INSTRUCTIONS

PLEASE READ BEFORE INSTALLATION

Familiarize yourself with the gate and post conditions prior to installation. The adjustable Gate Lock Bracket must be rigidly mounted to either the gate or gate post. The bracket may be used to mount either the #2013 armature or magnet assembly as dictated by the application.

Due to the wide diversity of gate designs additional custom hardware may be required to complete the installation.

Refer to separate instructions provided with the #2013 Gate Lock for further installation information.

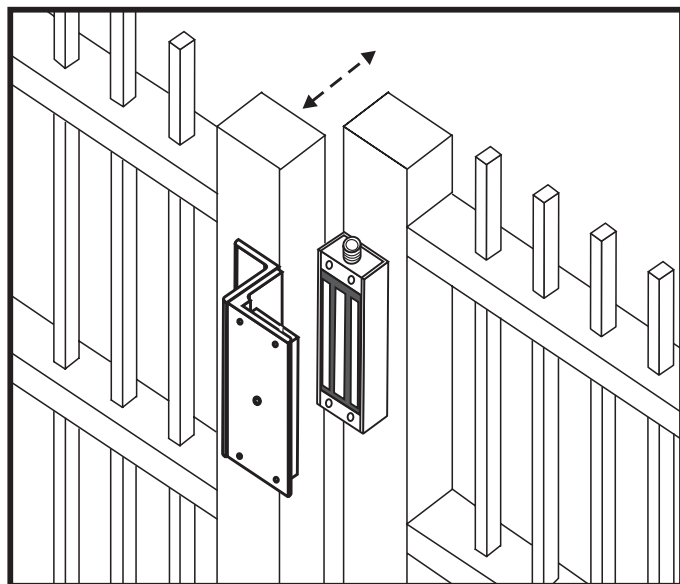


GENERAL MOUNTING INFORMATION

SWING GATE

Typical installation depicting the use of the Gate Lock Bracket to install the DynaLock Series 2013 Gate Lock.

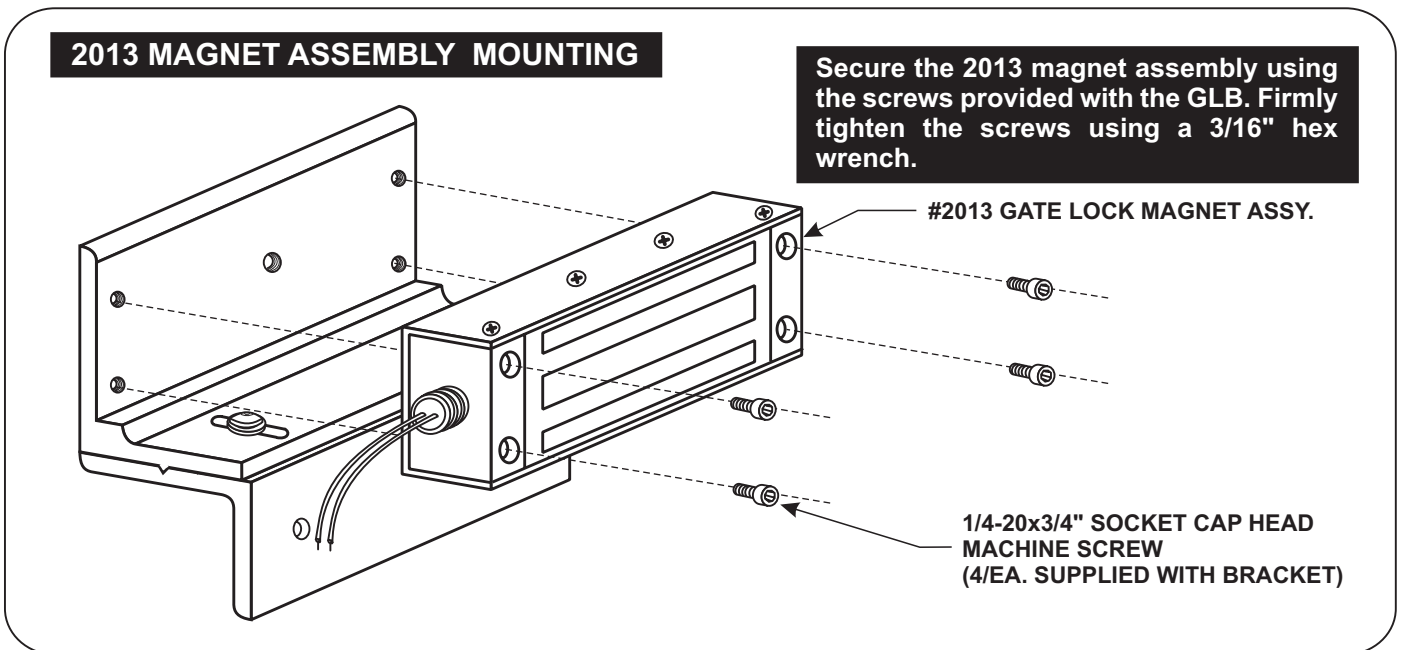
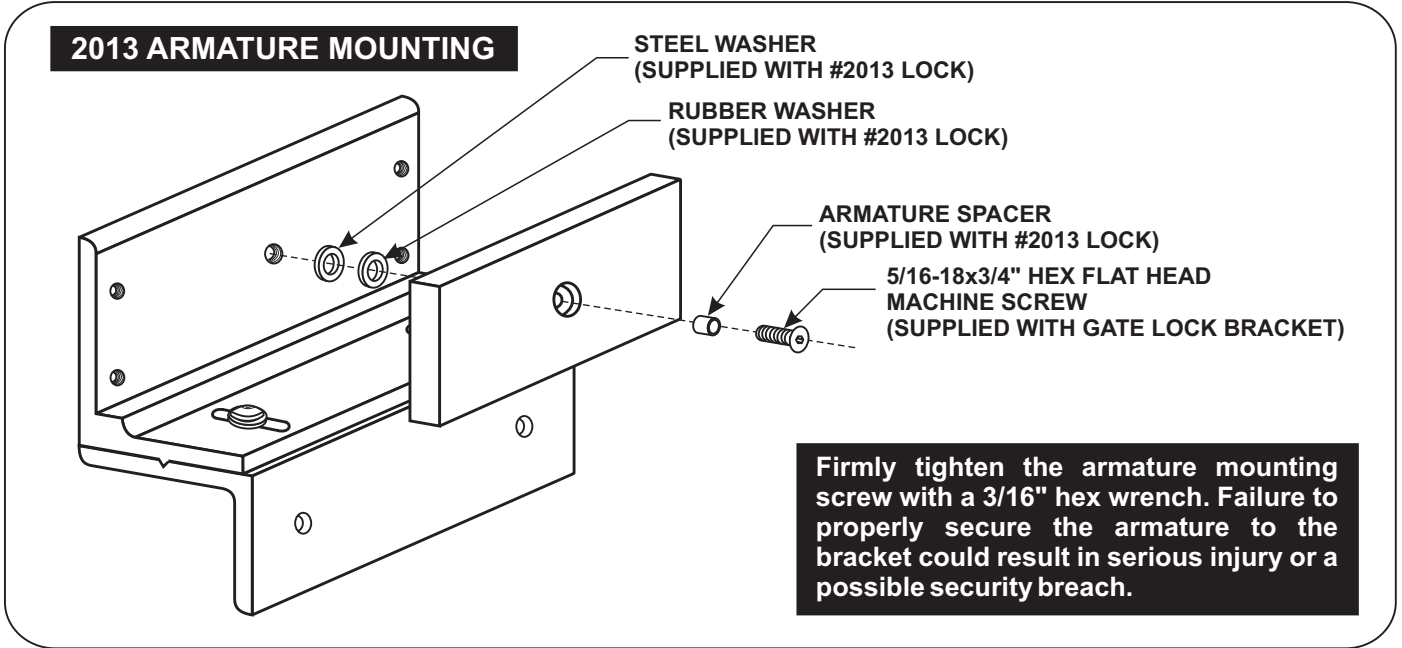
The 2013 magnet assembly is mounted to the gate post. The armature is affixed to the gate using the adjustable Gate Lock Bracket.



MOUNTING PREPARATION

1. DETERMINE THE PREFERRED MOUNTING CONFIGURATION

From the illustrations below determine whether the Gate Lock Bracket will be used to mount the #2013 armature or magnet assembly. Select the hardware indicated and follow the specific instructions to mount the desired component.

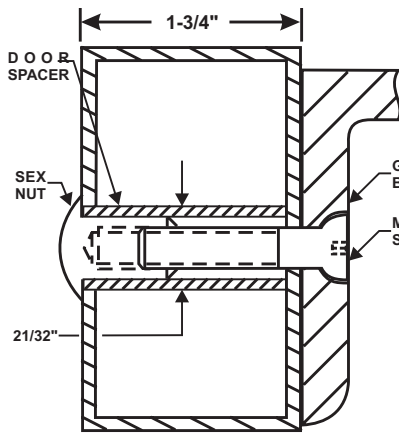


2. PREPARE THE GATE FOR MOUNTING THE BRACKET

From the three illustrations on the top of page 3 select the one that resembles your gate type and follow the instructions for drilling the mounting screw holes.

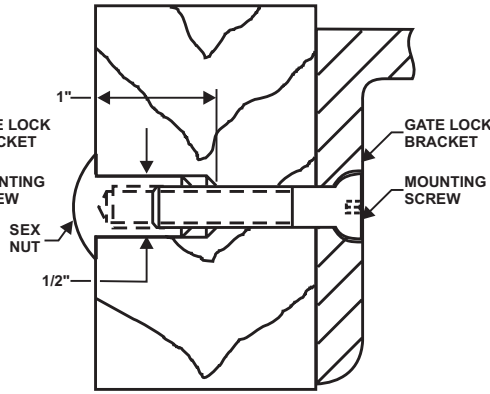
Firmly tighten the mounting screws using a 3/16" hex wrench.

INSTALLATION & ADJUSTMENT



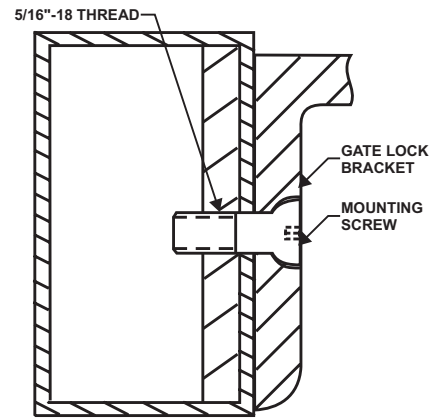
HOLLOW TUBE GATE

Drill an 11/32" diameter hole through gate. From sex nut side only enlarge the 11/32" hole to 21/32" diameter.



SOLID CORE GATE

Drill an 11/32" diameter hole through gate. From sex nut side only drill 1/2" diameter hole to 1" depth.



REINFORCED TUBE GATE

Drill an 17/64" diameter hole and tap for 5/16"-18 thread.

3. ADJUSTING THE BRACKET

If necessary the Gate Lock Bracket may be adjusted to compensate for unusual clearance and offset conditions on the gate assembly (Refer to Figure "A"). Adjust the bracket as follows:

- a. Using the 5/32" hex wrench provided loosen the two bracket assembly screws two (2) full turns each.
- b. Slide the two halves of the bracket apart as required. Align the locking rib on the bottom of the upper half with a matching groove on the lower half (Refer to Figure "B")
- c. Firmly re-tighten the assembly screws, verify proper gate and lock alignment and operation and re-adjust as necessary.

Figure "A"

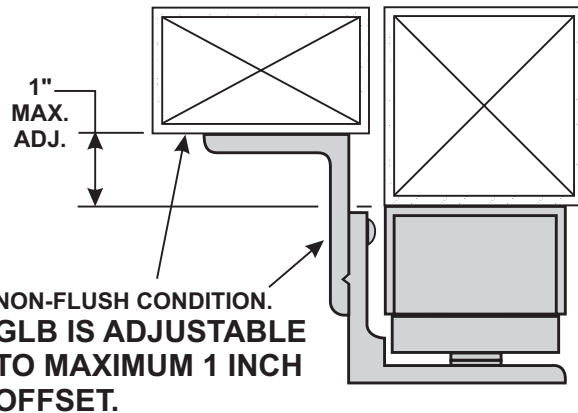
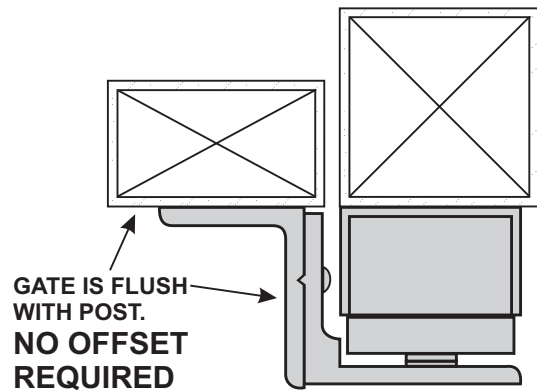
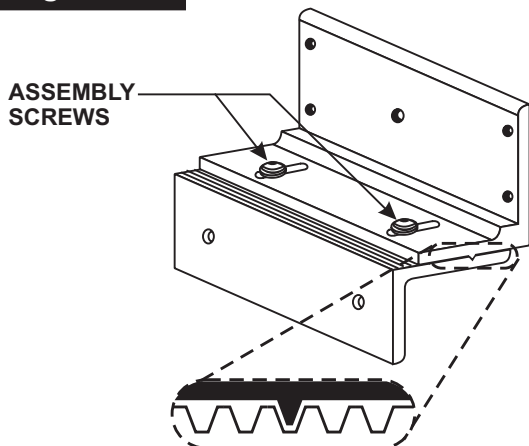


Figure "B" ADJUSTING THE GLB

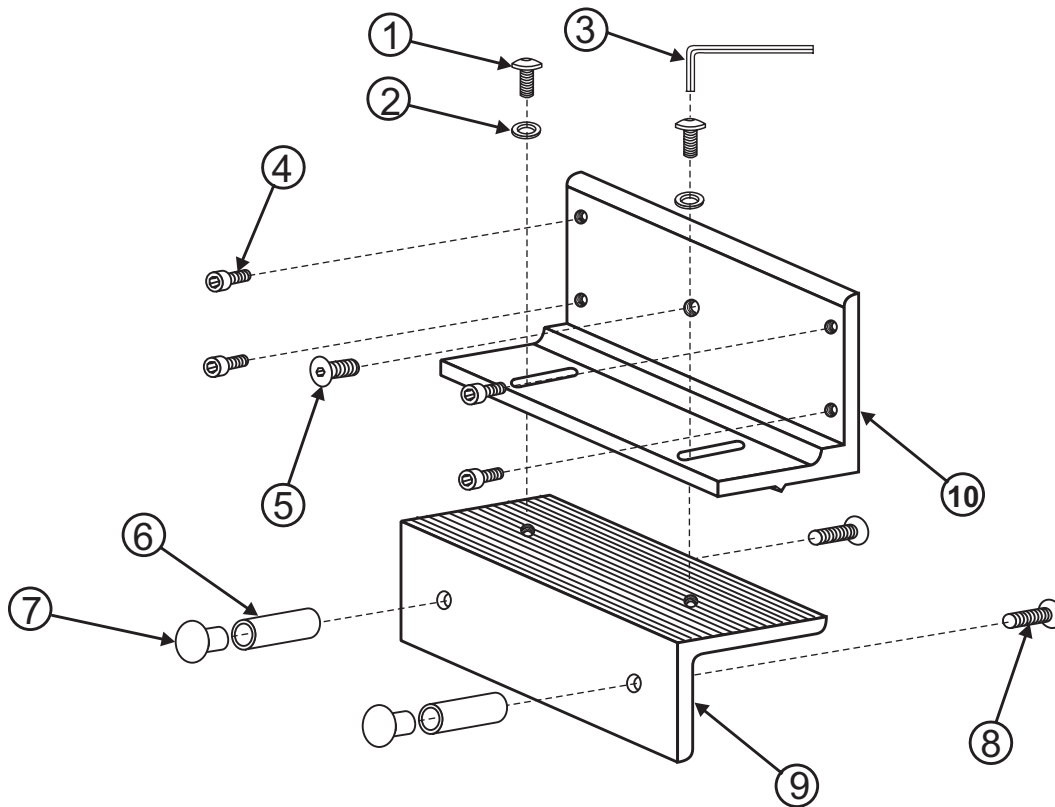


GATELOCK BRACKET BILL OF MATERIAL

- 1 - Mounting Instructions
- 1 - Gate Lock Bracket Assembly
- 1 - Hardware Kit consisting of:
 - 4 - 1/4-20 x 3/4" socket cap head machine screws (Gate Lock Mtg. Screws)
 - 1 - 5/16-18 x 3/4" hex flat head machine screw (Armature Mtg. Screw)
 - 1 - 5/32" Hex Wrench
- 2 - Mounting Bolt Assemblies, each consisting of:
 - 1 - 5/16-18 x 1-3/4" hex flat head machine screw
 - 1 - 5/16-18 Sex Nut
 - 1 - 1-11/16" long Door Spacer

TOOLS REQUIRED

- 1 - Electric Drill
- 1 - 3/16" Hex Wrench
- 1 - 11/32" Drill Bit
- 1 - 21/32" Drill Bit
- 1 - 1/2" Drill Bit
- 1 - 17/64" Drill Bit
- 1 - Hammer
- 1 - Center Punch
- 1 - Pencil



DESCRIPTION

- 1. Assembly Screw
- 2. Lock Washer
- 3. Hex Wrench
- 4. Lock Mtg. Screw
- 5. Armature Mtg. Screw
- 6. Door Spacer
- 7. Sex Nut
- 8. Mounting Screw
- 9. Lower Bracket
- 10. Upper Bracket

PART NO.

- Hardware Kit
Part #300914
- #300737
- #300736

GATE LOCK BRACKET EXPLODED VIEW