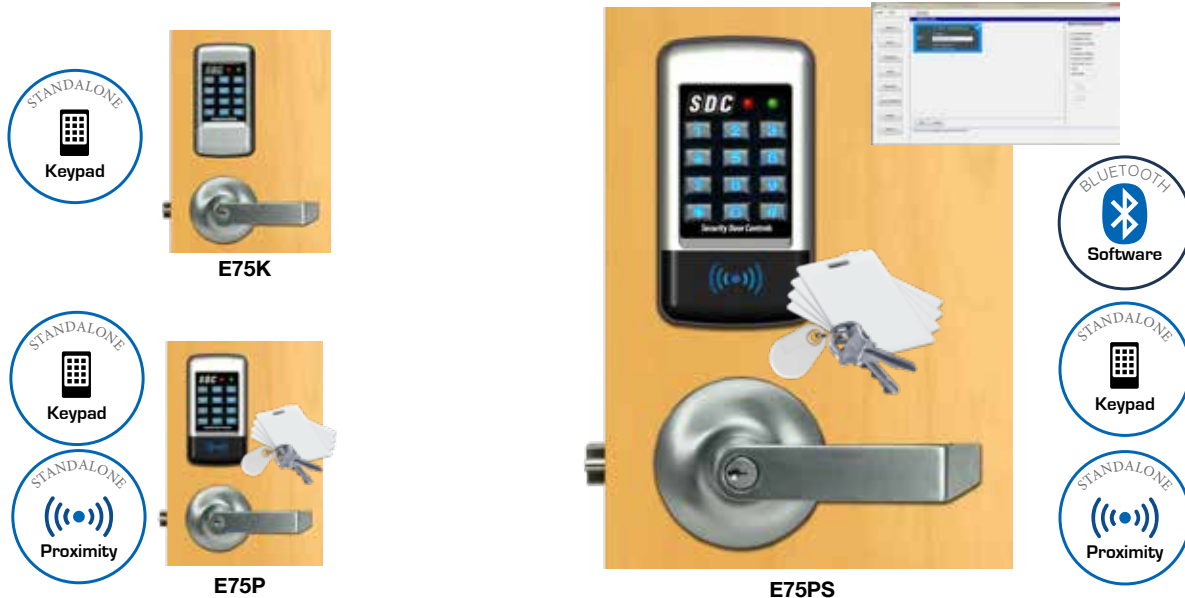


EntryCheck® E75

Standalone Electronic Locksets Series

The SDC EntryCheck® E75 is an indoor/outdoor standalone electronic battery powered solution, providing controlled access for basic and multi-level high security requirements. The E75PS locksets are keypad or PC software programmable, and combine multiple access technology with efficient motorized locksets.



FEATURES

E75K and E75P:

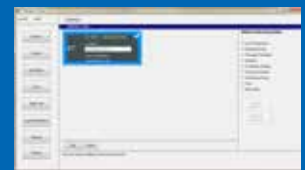
- Keypad Programmable
- 3,000 Users, 32 Temporary Users
- 4 to 6 Digit PIN Codes
- Passage Mode Option
- 32 Access Groups, Schedules
- 32 Holidays
- 4 Authority Levels
- Keypad Tamper Lockout
- Mechanical Key Override
- Battery Powered (4AA)
- Blue Backlit Cast Metal Keys
- Weather & Vandal Resistant
- Retrofit Existing Lock Door Prep
- Motorized SDC Cylindrical Lockset
- Heavy Duty ANSI Grade 1
- Vandal Resistant Lever Clutch Mechanism

E75PS additional Features :

- Point-and-Click Microsoft PC-Based Software,
- Keypad PC Software Programmable
- Supports Up to 1,000 Unique Doors
- Manage Individual Door Parameters, Access Schedules, User Groups, Holidays, Temporary Users
- Lock settings and related parameters are easily cloned to other locks, permitting quick multi-lock installations
- Data Import: All lock parameters and user data can easily be imported from existing databases, locks, or spreadsheets
- Database Backup Utility: Password protected SQL dbase may be saved on any PC
- Wireless Information Transfer: Lock programming and audit trail may be uploaded or downloaded using a Bluetooth enabled PC or laptop
- Audit Trail Information: Locks will maintain a record of the last 10,000 events to provide increased accountability. Audits may be downloaded to Excel spreadsheets where information is easily analyzed, sorted or printed
- User Entries Logged with Time and Date
- Remote Input Activation is Logged
- Door Forced/Door Ajar/Duress Alarms Are Logged
- User Reports: Users may be exported to Excel spreadsheets where information is easily sorted or printed

E75PS

Includes Bluetooth enabled software!





SPECIFICATIONS

Power	4 Size AA Batteries (Alkaline) 100,000 cycles or External 12VDC Power @ 30mA
Inputs	1 Request to Exit 1 Door Position Switch
Output	1 Aux Relay Contacts SPDT 1A @ 30VDC
Temperature	-4°F to +140°F (-20°C to +60°C)
Humidity	5% to 95% non-condensing
Keypad Finish	Q 626 Dull Chrome - Standard B 693 Black
Latch Bolt	9/16" Throw
Backset	2-3/4"
Strike	4-7/8" ANSI A115.2
Door Thickness	1-3/4" to 2-1/8"

PC Requirements

Supported Operating Systems	Windows 7/8, 10 (32-Bit and 64-Bit Systems)
Processor	2GHz or Faster Recommended
RAM	2GB or More Recommended
Hard Disk Space	1GB or More Recommended
Required	Windows Administrative Rights

PRODUCT SKU SAMPLE: E75P Q E1 Q



HOW TO ORDER

ENTRYCHECK™ E75 LOCKSET - SDC LOCK

1| SPECIFY MODEL

- E75K** Digital Keypad Only
- E75P** Digital Keypad with Prox Reader
- E75PS** Digital Keypad with Prox Reader and Software

2| SPECIFY KEYPAD FINISH

- Q** 626 Dull Chrome (Standard)
- B** Black

3| SPECIFY LEVER HANDLE

- G1** Galaxy
- G5** Galaxy I-Core Prep
- E1** Eclipse
- E5** Eclipse I-Core Prep



G1 Galaxy



E1 Eclipse



G5 Galaxy, I-Core



E5 Eclipse, I-Core

4| SPECIFY LEVER FINISH

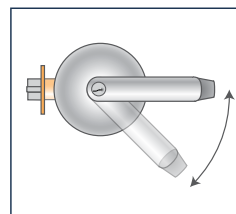
- Q** 626 Dull Chrome (Standard)
- P** 625 Polished Chrome
- C** 605 Polished Brass



ACCESSORIES

PROX CARDS AND KEY FOBs

- HID1326-25** Proximity Card , 25 Cards
- HID1326-100** Proximity Card, 100 Cards
- HID1346-10** Proximity Key Fob, 10 Key Fobs
- HID1346-100** Proximity Key Fob, 100 Key Fobs
- PTAG-10** Proximity Disc Tag, 10 Tags
- PTAG-25** Proximity Disc Tag, 25 Tags



When locked, the built-in clutch permits the handles to operate without retracting the latch, reducing potential for damage.