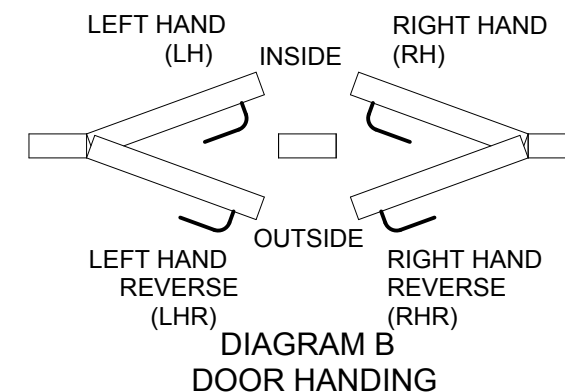
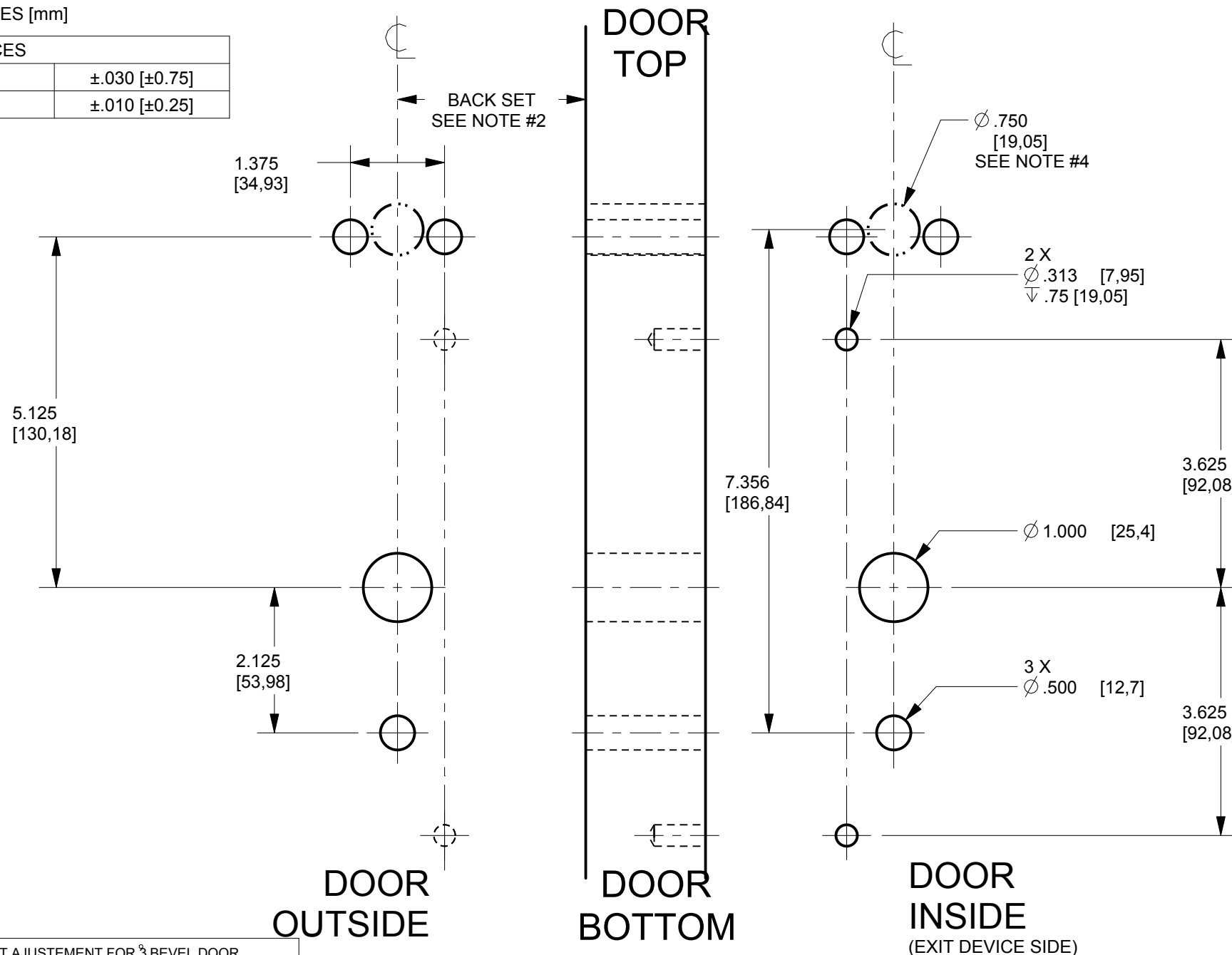


- NOTES:
- 1- FOR EXIT DEVICE AND MORTISE LOCK CUT-OUT REFER TO EXIT DEVICE MANUFACTURER INSTALLATION INSTRUCTIONS.
 - 2- BACKSET SHOWN FOR REFERENCE ONLY, ADJUST BACKSET TO EXIT DEVICE MANUFACTURER INSTALLATION INSTRUCTIONS. BACKSET TO BE ADJUSTED TO LOW AND HIGH BEVEL DOOR EDGE AS PER DIAGRAM A TABLE.
 - 3- DIMENSIONS ARE SYMETRICAL ABOUT \perp UNLESS OTHERWISE NOTED.
 - 4- THIS HOLE ONLY FOR LOCK WITH MESSENGER OR BLUETOOTH.
 - FOR COMPLETE HOLE PATTERN REFER TO DRAWING DT-515149 OR IP-515149.
 - 6- ALL DIMS ARE IN INCHES [mm]

REVISIONS					
REV	ECN	DESCRIPTION	FAIT PAR MADE BY	VERIF PAR CHK'D BY	DATE
1	13211	ORIGINAL RELEASED FOR PILOT	P.P.	A.T.	17JN 2009
2	15719	NOTES ADJUSTED, NEW DESCRIPTION	A.E.	C.D.	20JA 2016

SPECIFIC TOLERANCES	
DISTANCES	$\pm .030$ [± 0.75]
HOLES \varnothing	$\pm .010$ [± 0.25]



\perp LOCK LEVER

VERSION 4
LHR LOCK

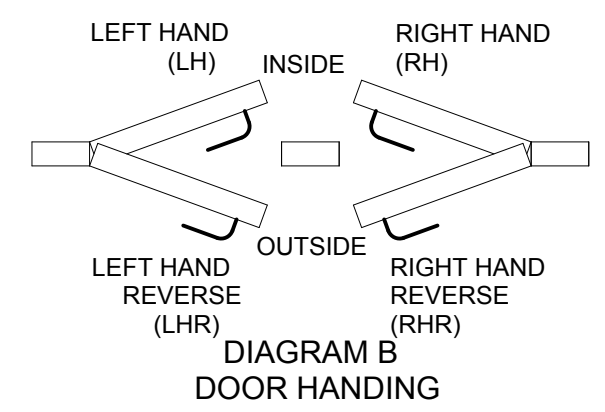
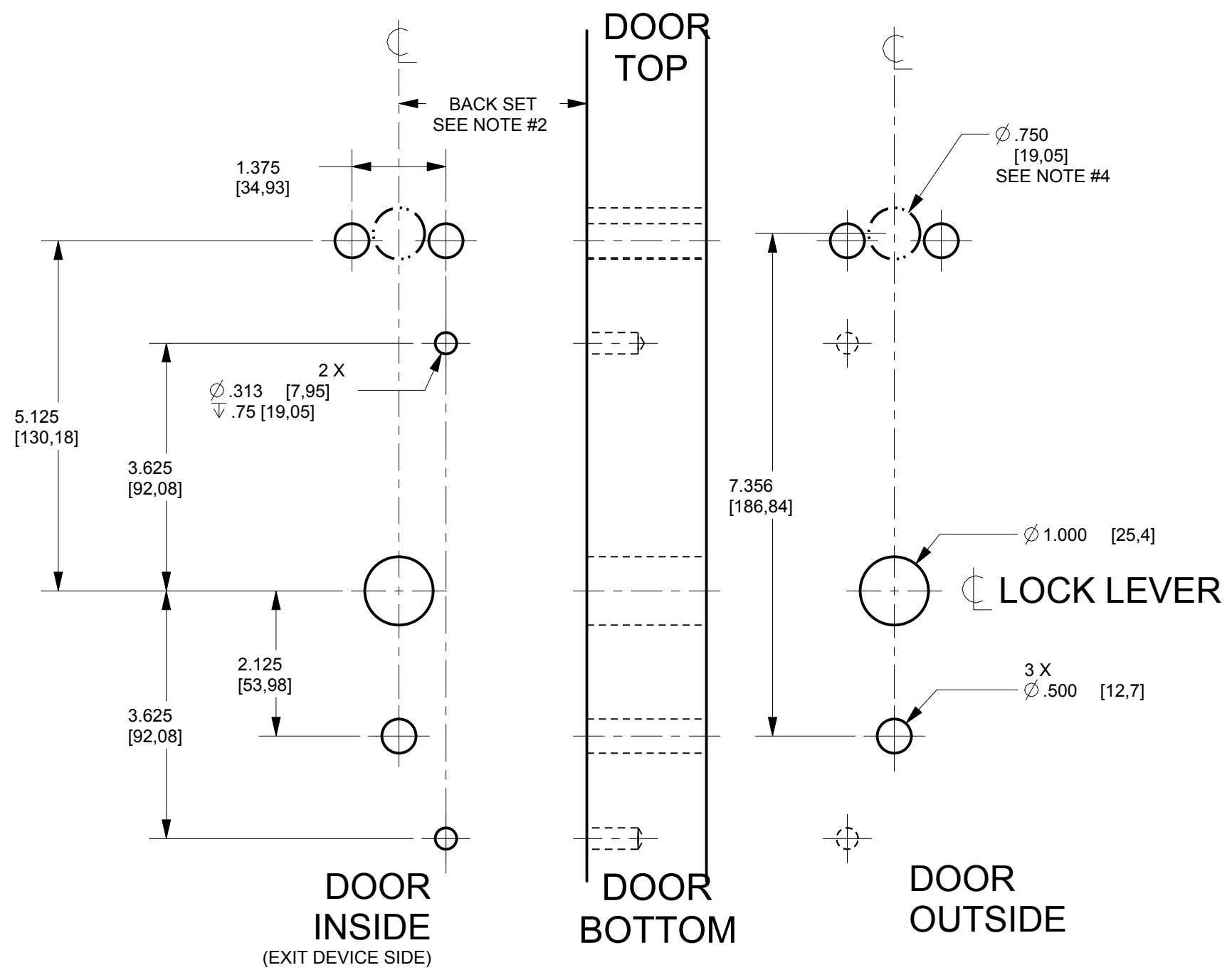
DIAGRAM A - BACK SET AJUSTEMENT FOR 3 BEVEL DOOR

DOOR THICKNESS DIMENSION X	BACK SET AJUSTEMENT DIMENSION Y
1.25 (31,8mm)	.032 (0,81mm)
1.50 (38,1mm)	.039 (1,00mm)
1.75 (44,5mm)	.046 (1,17mm)
2.00 (50,8mm)	.052 (1,32mm)
2.25 (57,2mm)	.059 (1,50mm)
2.50 (63,5mm)	.065 (1,65mm)
2.75 (69,9mm)	.072 (1,83mm)

SCALE 1:2

- SYMBOLS:
- ∇ DEEP
 - \square COUNTERBORE
 - \perp CENTER LINE
 - \varnothing DIAMETER
 - \triangleleft NOT TO SCALE

	DIMENSIONS CRITIQUES CRITICAL DIMENSIONS	SANS AUTRES SPECIFICATIONS, LES DIMENSIONS SONT POUCES [millimètres] ET S'APPLIQUENT APRÈS FINITION. UNLESS OTHERWISE SPECIFIED, DIMENSIONS ARE INCHES [millimeters] AND APPLY AFTER FINISH.	DESSIN PAR: DRAWN BY: P.PRIEUR 17JN09		7301, Decarie Boul Montreal, QC Canada H4P 2G7 www.kaba-ilco.com
		PROJECTION 31em ANGLE THIRD ANGLE PROJECTION UNLESS OTHERWISE SPECIFIED, DIMENSIONS ARE INCHES [millimeters] AND APPLY AFTER FINISH.	CONCU PAR: DESIGNED BY: A.TOLEDANO 17JN09		
NE PAS MESURER SUR LE DESSIN DO NOT SCALE DRAWING			APPROUVE PAR: APPROVED BY: - -	630, 730, 750, 79E, E-PLEX 2000 AND POWER-PLEX 2000 LOCK SERIES DOOR PREPARATION DRAWING YALE CONCEALED ROD 7160	
DIMENSIONING AND TOLERANCING AS PER AMERICAN SOCIETY OF MECH ENGINEERS ASME Y14.5-1994 CE DOCUMENT EST LA PROPRIETE STRICTE DE KABA. LES DONNEES QUI IL CONTIENT NE PEUVENT ETRE COPIEES OU DIVULGUEES A UNE TIERCE PARTIE SANS LE CONSENTEMENT ECRIT DE KABA. CE DOCUMENT DEVRA ETRE RETOURNE SUR DEMANDE A KABA. THIS DOCUMENT IS PROPERTY OF KABA. THE DATA CONTAINED IS PROPRIETARY AND SHALL NOT BE COPIED OR DISCLOSED TO A THIRD PARTY WITHOUT WRITTEN CONSENT OF KABA. THIS DOCUMENT WILL BE RETURNED TO KABA UPON DEMAND. UNE VERSION FRANCAISE DE CE DOCUMENT EST DISPONIBLE SUR DEMANDE.			MATERIAU / MATERIAL		
TOLERANCES:			NOT APPLICABLE		FORMAT
THIS DRAWING HAS SPECIFIC TOLERANCES, SEE NOTES			NOT APPLICABLE		NO PIECE / PART NO:
CE DESSIN A DES TOLERANCES SPECIFIQUES, VOIR LES NOTES			NOT APPLICABLE		NO DESSIN / DRAWING NO:
TRAITEMENT THERMIQUE / HEAT TREATMENT			NOT APPLICABLE		B
NOT APPLICABLE			NOT APPLICABLE		ECH SCALE
			SEE VIEWS		PG SHT
			1		DE OF
			2		
			IP-513066		



VERSION 4

RHR LOCK

SCALE 1:2

- SYMBOLS:
- ∇ DEEP
 - COUNTERBORE
 - ⊕ CENTER LINE
 - ∅ DIAMETER
 - ← NOT TO SCALE

CE DOCUMENT EST LA PROPRIETE STRICTE DE KABA. LES DONNEES QU'IL CONTIENT NE PEUVENT ETRE COPIEES OU DIVULGUEES A UNE TIERCE PARTIE SANS LE CONSENTEMENT ECRIT DE KABA. CE DOCUMENT DEVRA ETRE RETOURNE SUR DEMANDE A KABA.

THIS DOCUMENT IS PROPERTY OF KABA. THE DATA CONTAINED IS PROPRIETARY AND SHALL NOT BE COPIED OR DISCLOSED TO A THIRD PARTY WITHOUT WRITTEN CONSENT OF KABA. THIS DOCUMENT WILL BE RETURNED TO KABA UPON DEMAND.

UNE VERSION FRANCAISE DE CE DOCUMENT EST DISPONIBLE SUR DEMANDE.



7301, Decarie Boul
Montreal, QC Canada
H4P 2G7
www.kaba-ilco.com

FORMAT	NO PIECE / PART NO:	NO DESSIN / DRAWING NO:			
B	N/A	IP-513066			
FOR COMPLETE TITLE REFER TO PAGE 1		PG SHT	2	DE OF	2