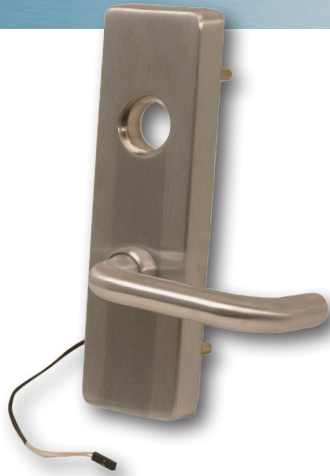


## PRECISION PH49

(modified by Command Access)



- FIELD REVERSIBLE
- 12 OR 24 VDC
- RATED FOR CONTINUOUS DUTY
- LOW CURRENT DRAW
- 3-YEAR WARRANTY

The Command Access electronic modification of the Precision 4908 series exit trim is perfect for stairwell conditions or applications where electric pullback of the exit device's latchbolt is cost prohibitive or not required. This is especially practical in applications where fire/life safety codes require "fail safe" condition which is not an option with electrified latch pullback devices. These trims are purchased complete or as modifications only.

## SPECIFICATIONS

### VOLTAGE:

- Operating Voltage: 12 or 24 VAC/DC
- Amperage: 12V = 250 mA; 24V = 150 mA
- Solenoid coil resistance: 12V = 18  $\Omega$  ; 24V = 69  $\Omega$

### RECOMMENDED UL LOCKING HARDWARE POWER SUPPLIES:

- |                |          |
|----------------|----------|
| • PS204/PS204B | • PS480B |
| • PS210        | • PS1    |
| • PS220/220B   | • PS2    |
| • PS440B       | • PS5-8  |

### PRODUCT DETAILS:

- Box: 14.75" x 4.5": x 4.5"
- Weight: 4 Lbs

### ACCESSORIES:

- REE: Request to Enter switch available
- CRU2: Current Reduction Unit to improve solenoid life in "continuously on" applications

## HOW TO ORDER

**MDPH49EL - storeroom:**  
(fail safe)

Outside lever locked (EL) electronically. Applied power allows outside lever to retract latch(es). Outside key momentarily unlocks outside lever to retract latch(es). Inside push pad is always free for immediate egress.

**MDPH49EU - storeroom:**  
(fail secure)

Outside lever unlocked (EU) electronically. Applied power allows outside lever to retract latch(es). Outside key momentarily unlocks outside lever to retract latch(es). Inside push pad is always free for immediate egress.